

Installation guide for the PartnerTech CD7220 Pole Display 64-Bit System

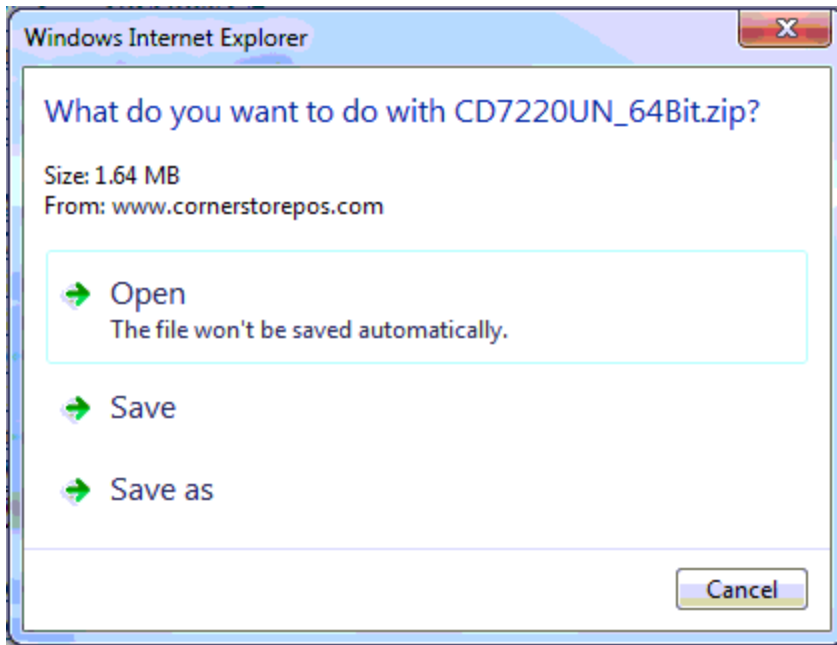


This guide will cover how to install the drivers for the PartnerTech CD7200 Pole Display.

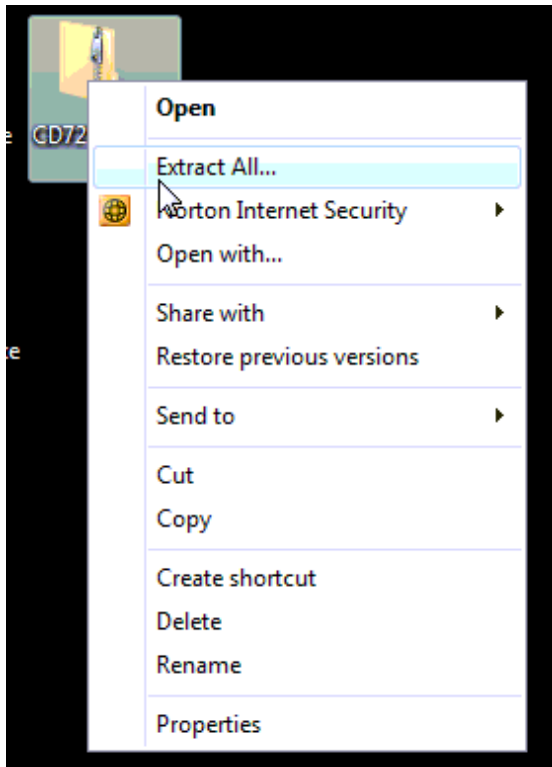
Installing the Pole for Windows Vista/7 64-bit

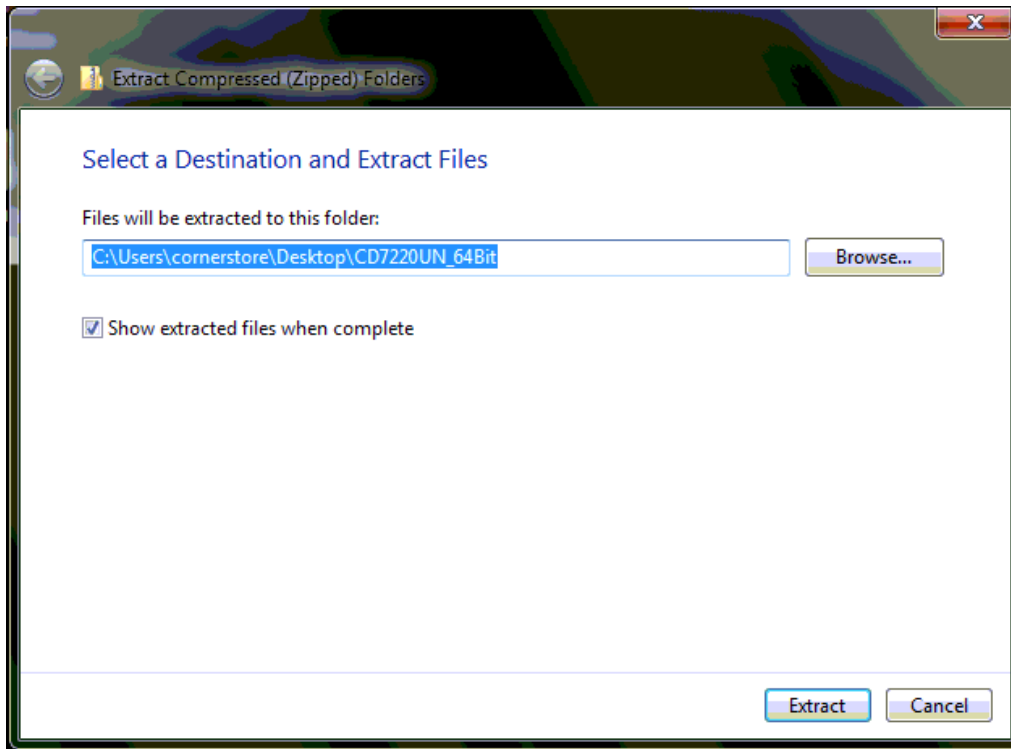
Step 1: Download the drivers at

http://www.cornerstorepos.com/downloads/hardware/CD7220UN_64Bit.zip



Step 2: Right click the folder and click on **Extract All**, then **extract**.





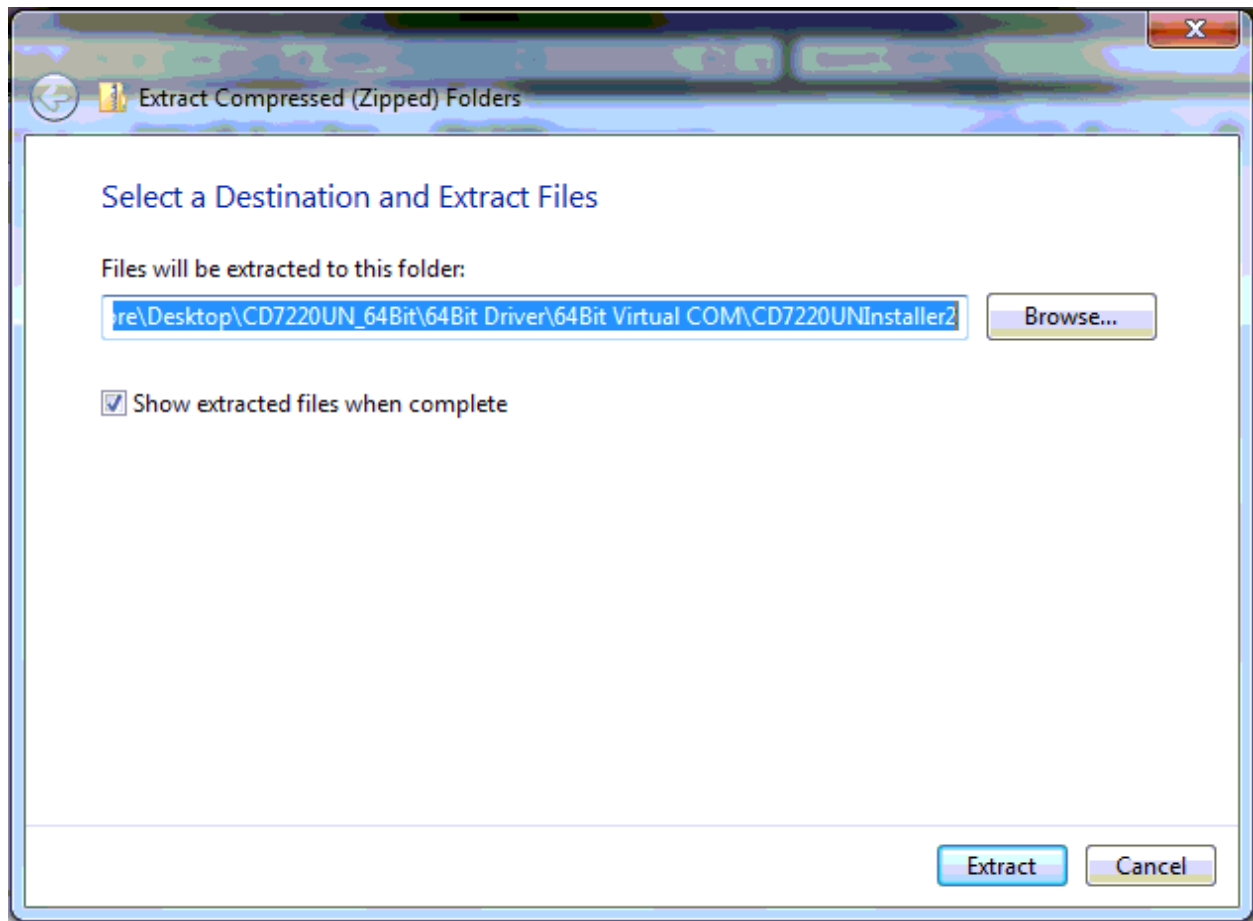
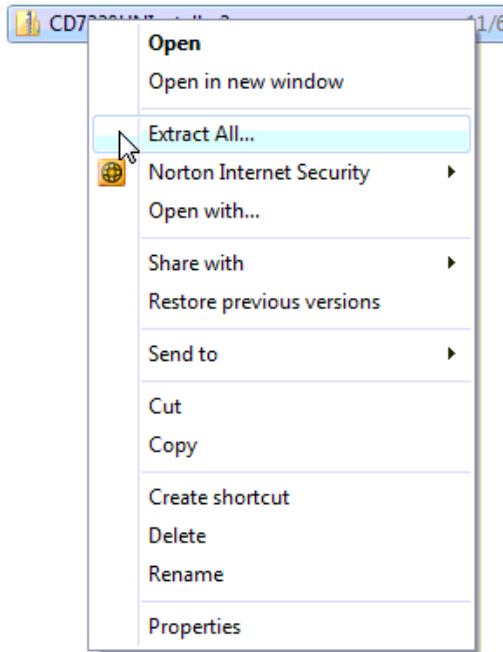
Step 3: Open the folder 64 Bit Driver

64Bit Driver 11/6/2012 2:07 PM File folder

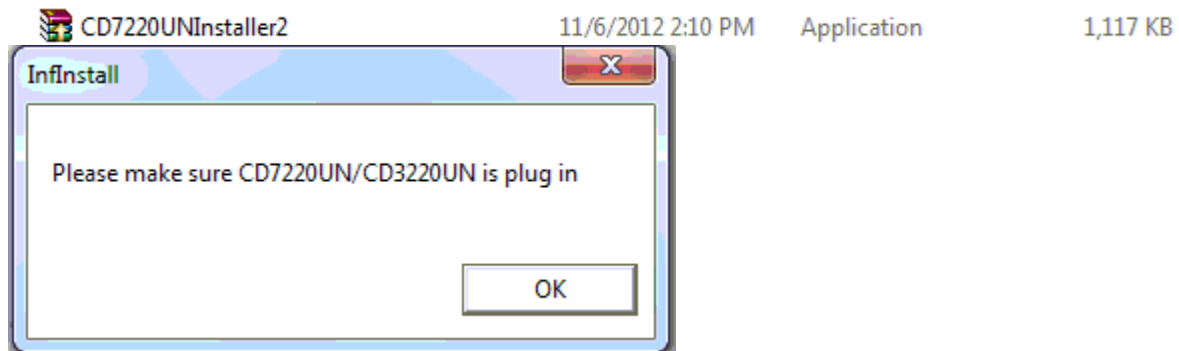
Step 4: Open the folder 64 Bit Virtual COM

64Bit Virtual COM 11/6/2012 2:07 PM File folder

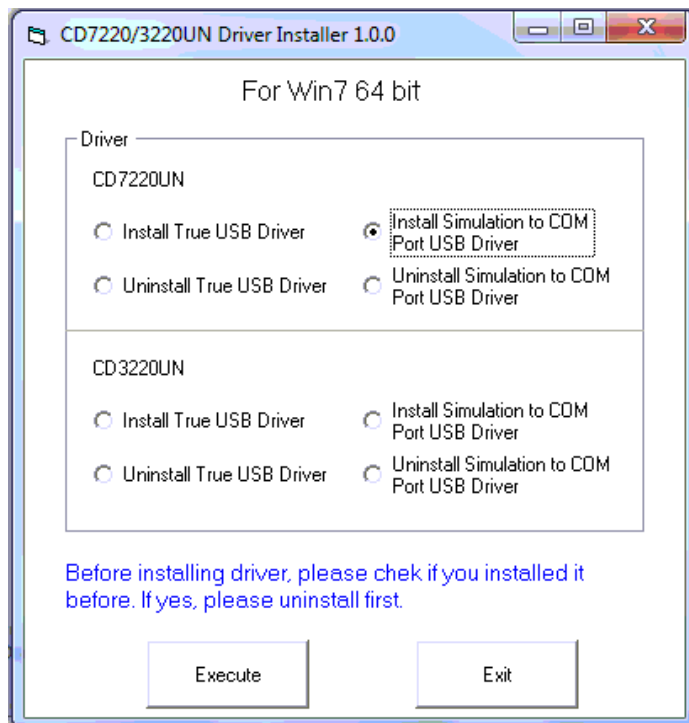
Step 5: right click CD7220Uninstaller2 and extract it as done above

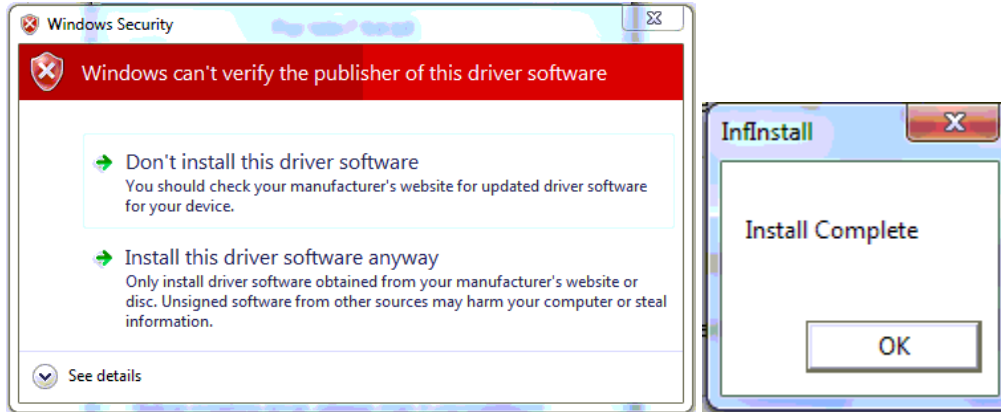


Step 4: Open that folder and open the **CDUninstaller2**.

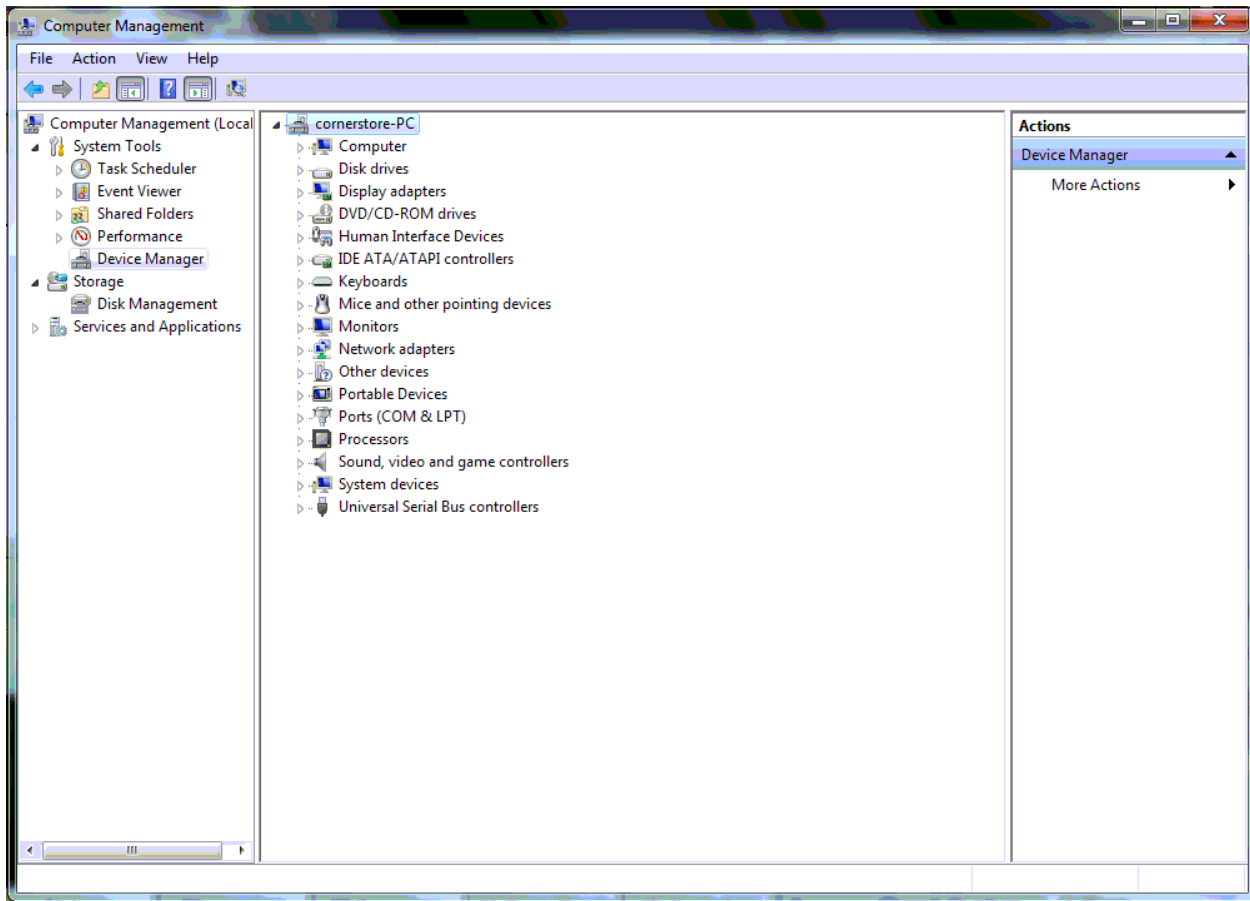


Step 5: Select the proper pole display model you have then select the **Virtual COM port option**, click **execute**, then click **finish**.

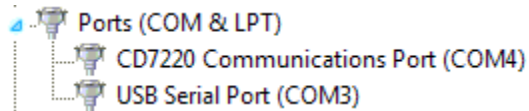




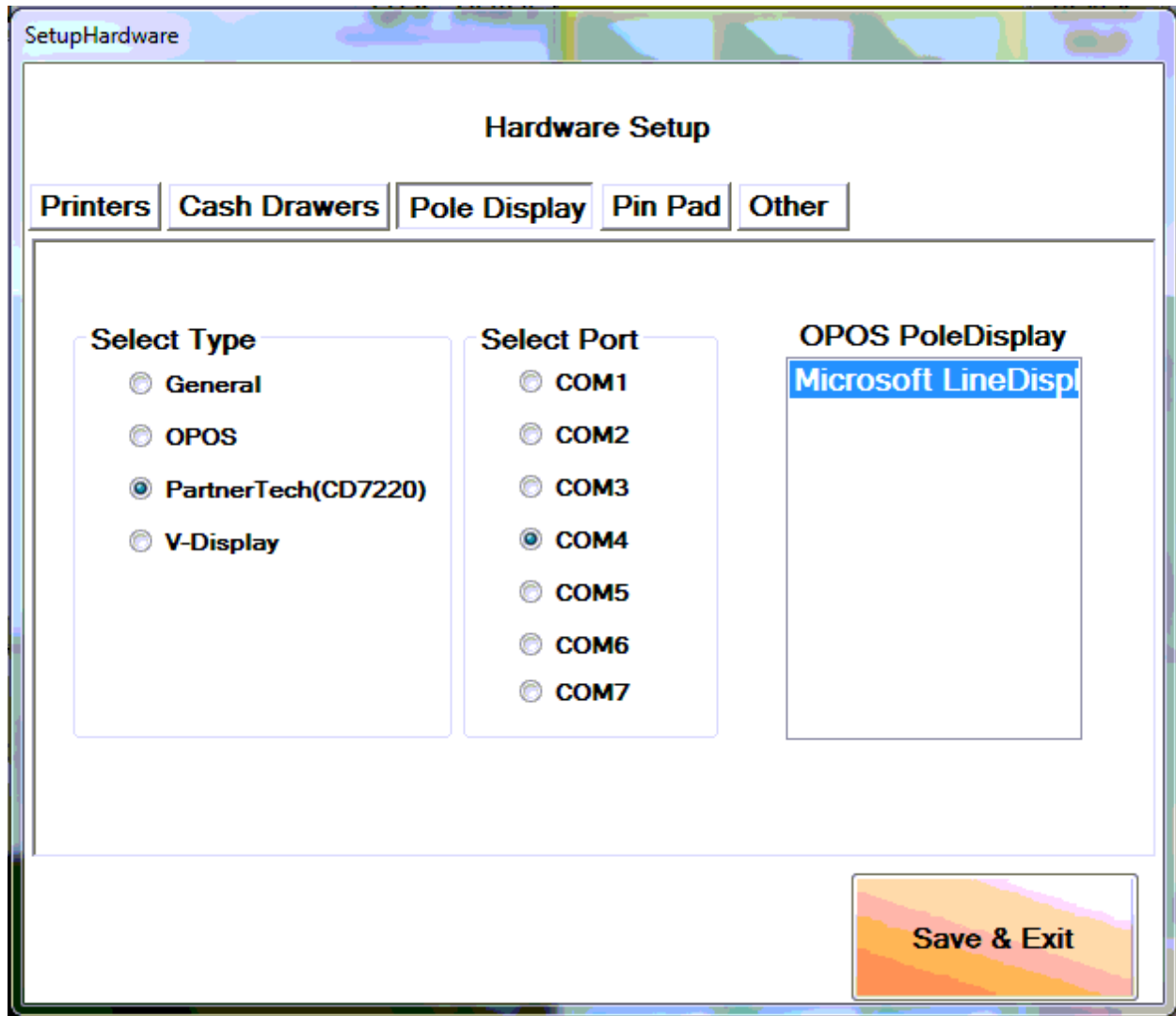
Step 6: Go to **Start > right click Computer > manage > device manager**



Step 7: Look under **ports** and look for the **COM Port** that was created by the pole display.



Step 8: Open up cornerstore and go to **Setup > Hardware Setup > Pole Display**.



Step 9: Select the **CD7200** option along with the proper **COM port** that it asks for. You do not need to select an OPOS PoleDisplay. **Click Save & Exit.**

Your PartnerTech CD7220 Customer Pole Display is now ready to be used for CornerStore.

Note: If you unplug the Pole Display and plug it into a different port, you may need to re-select your COM Port.