

## Cherry Keyboard with MSR installation instructions



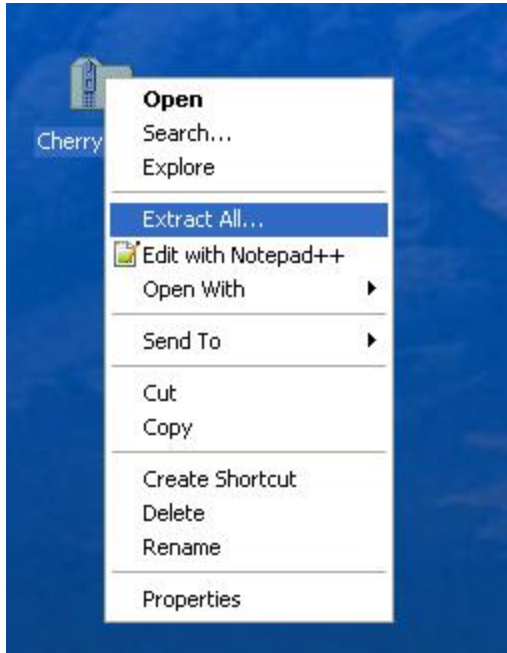
This guide will cover how to set up the Magnetic Swipe reader on the Cherry Keyboard with CornerStore. The keyboard and touchpad drivers will install automatically upon plugging in.

## Installation Instruction for Cherry Keyboard

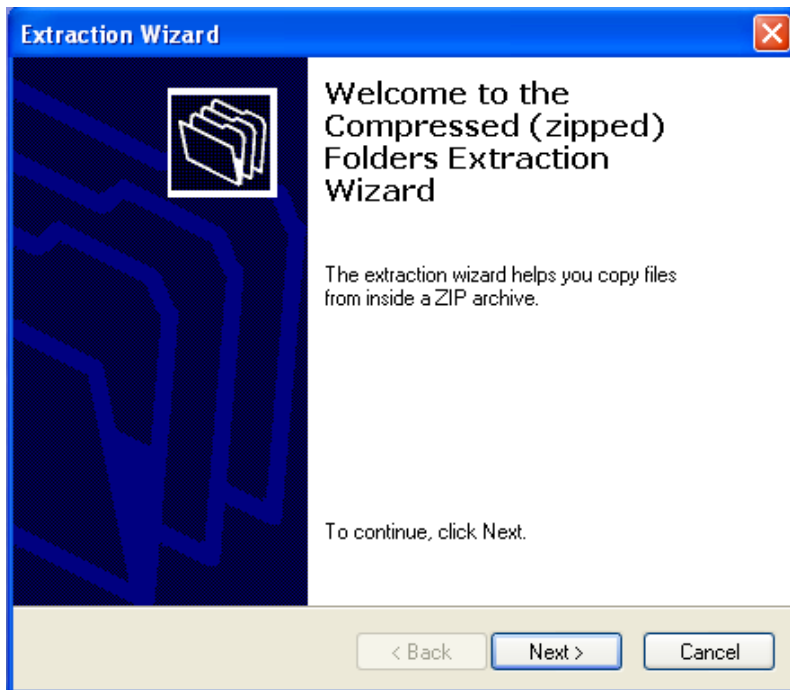
**Step 1:** Download the drivers from

<http://cornerstorepos.com/downloads/hardware/CherryToolsXPVista7.zip>

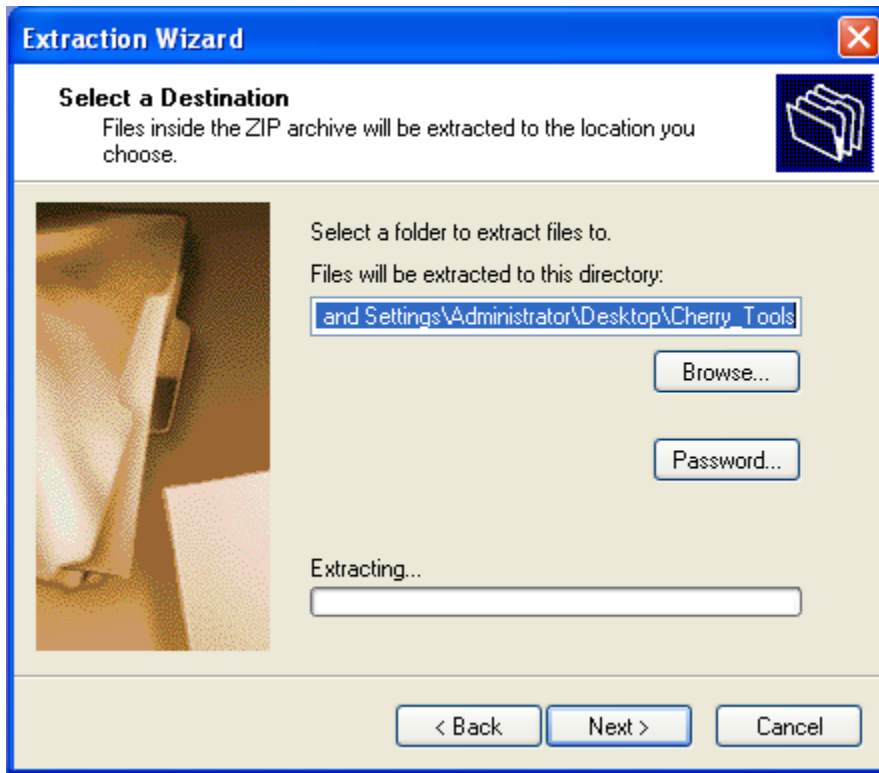
**Step 2:** Right click the file and select **Extract All**



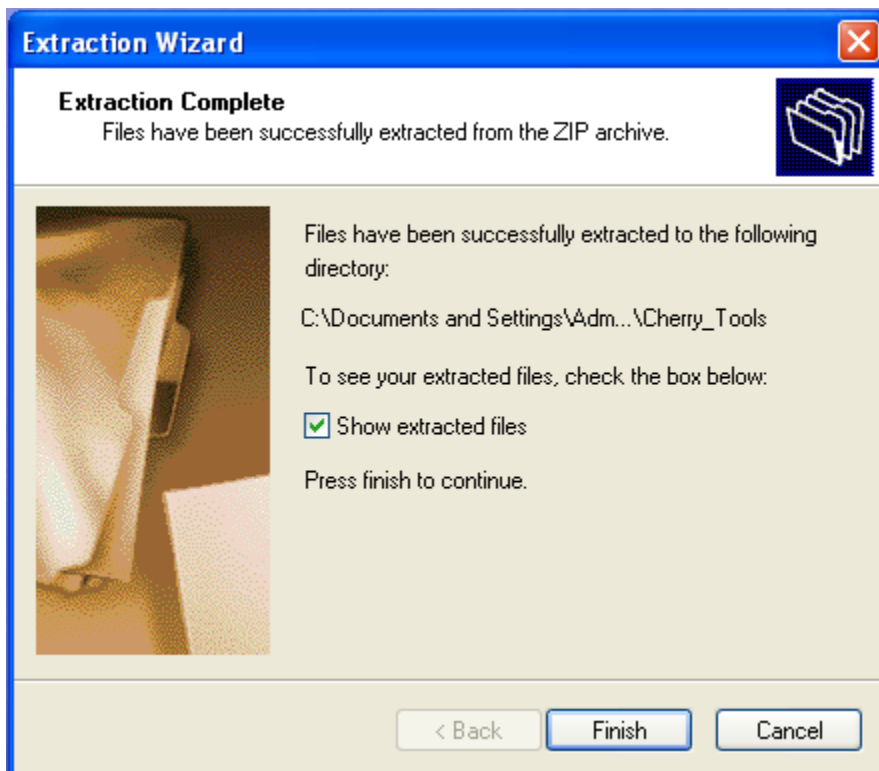
**Step 3:** Click **Next**



**Step 4: Click Next**



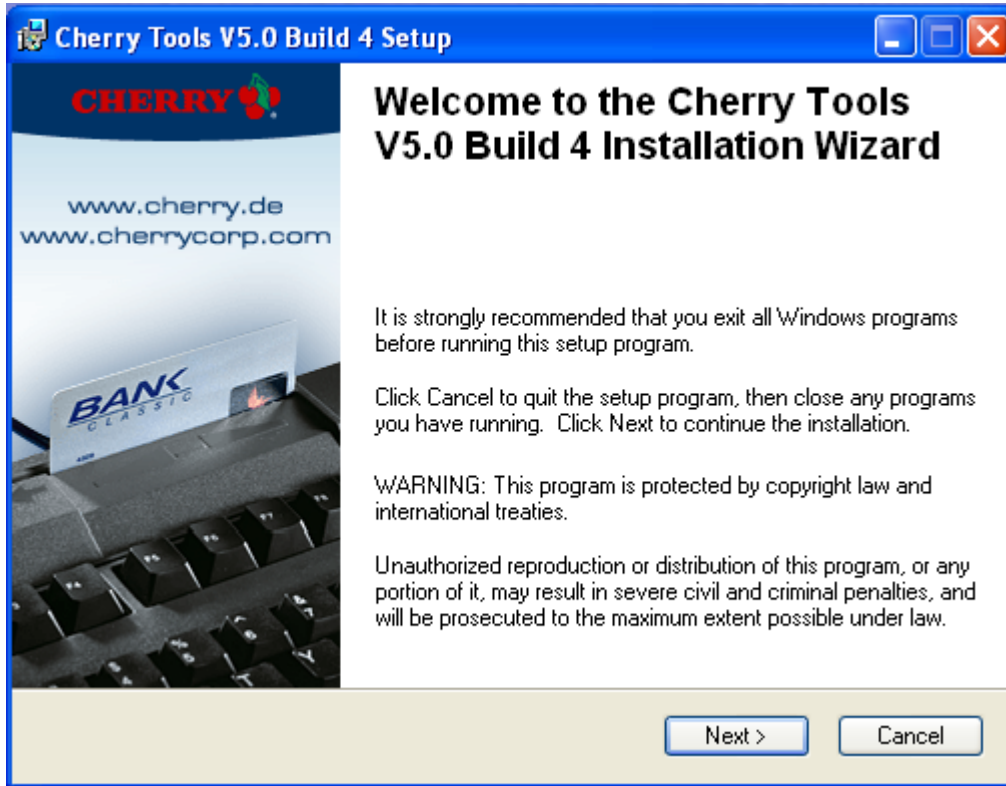
**Step 5: Click Finish, make sure Show Extracted Files is checked, click finish.**



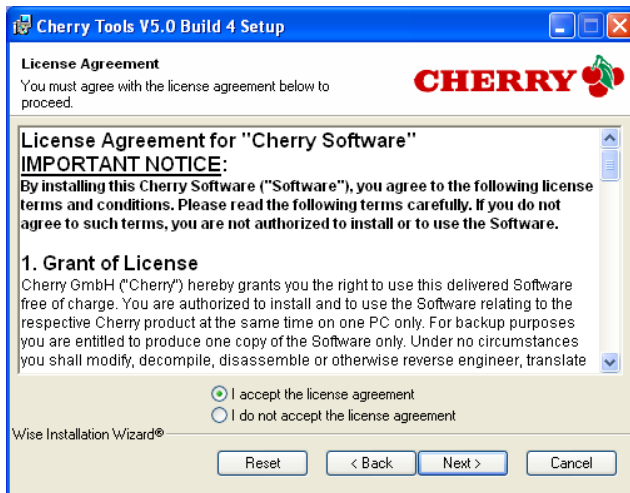
**Step 6:** A new window should appear, click on the **Cherry\_Tools\_50\_EN** and run it.



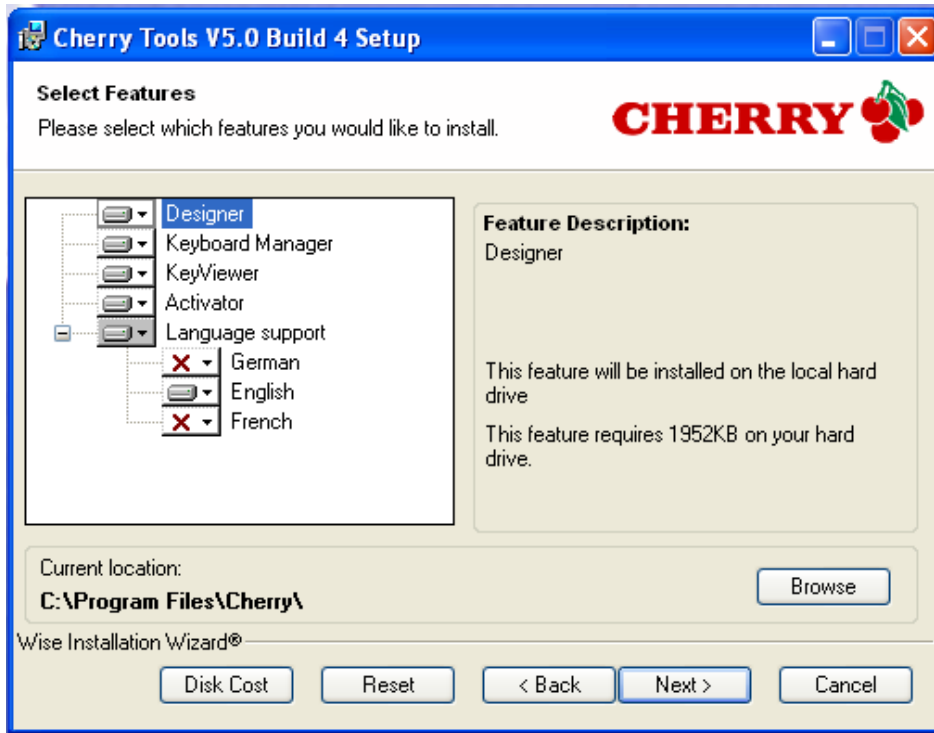
**Step 7:** Click **Next**



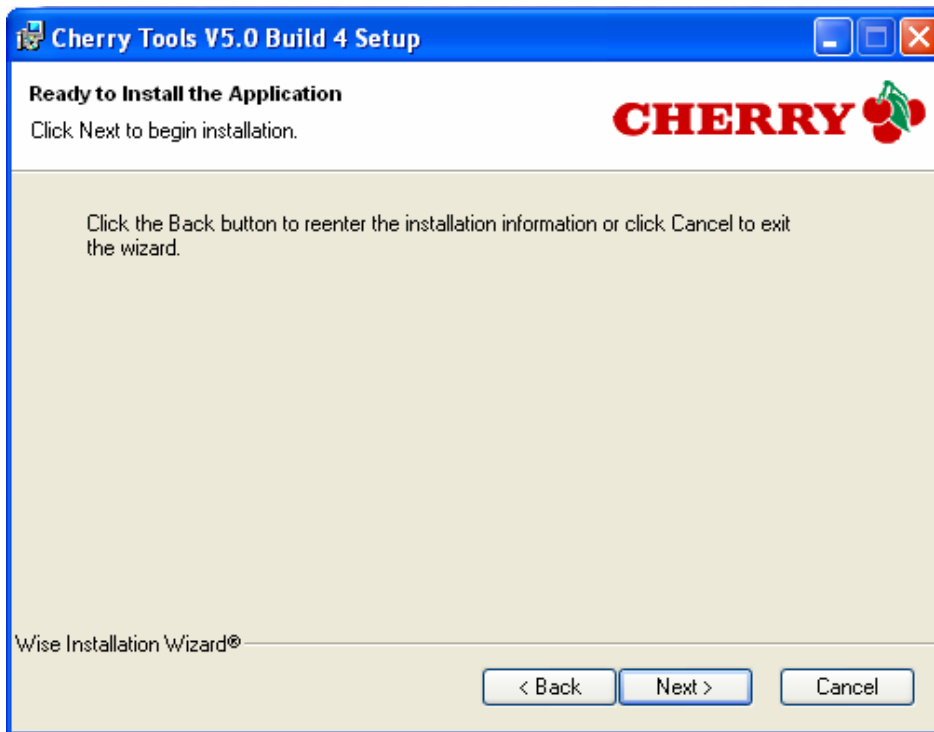
**Step 8:** Check **"I Accept the License Agreement"** then click **Next**



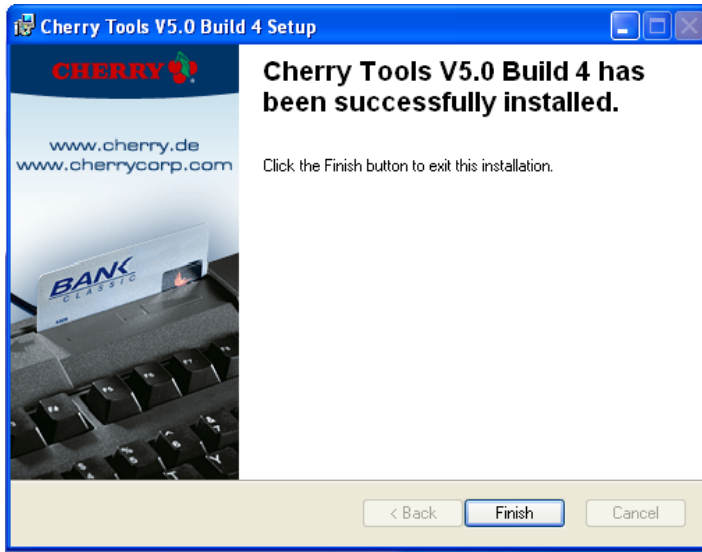
**Step 9: Click Next**



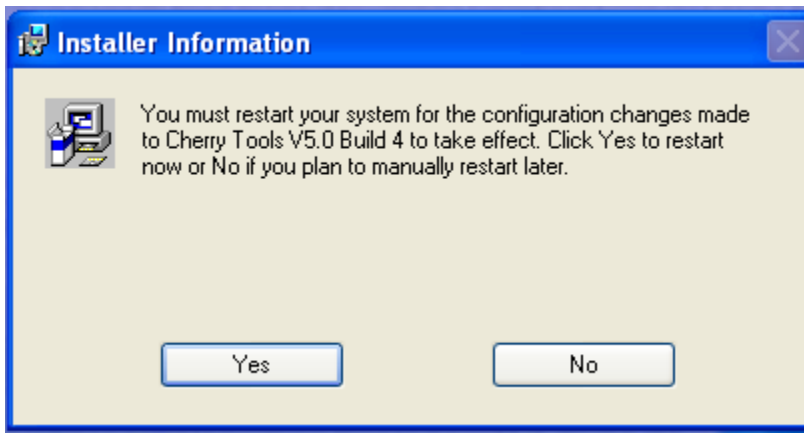
**Step 10: Click Next**



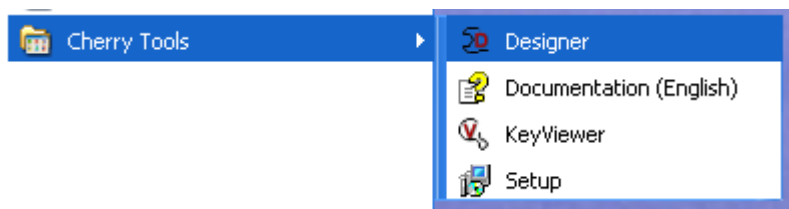
**Step 11: Click Finish**



**Step 12: Click Yes, your computer will restart**



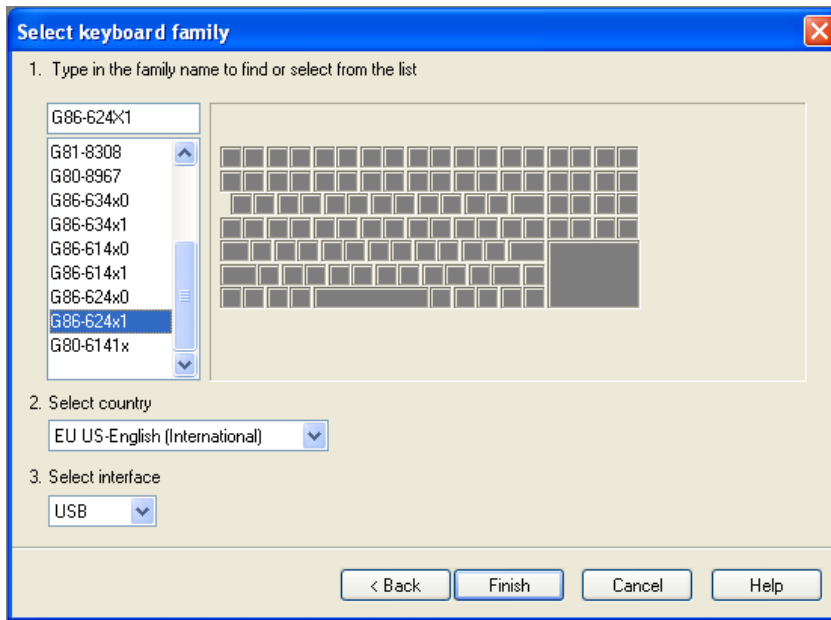
**Step 13: Go to Start > All Programs > Cherry Tools > Designer, open it.**



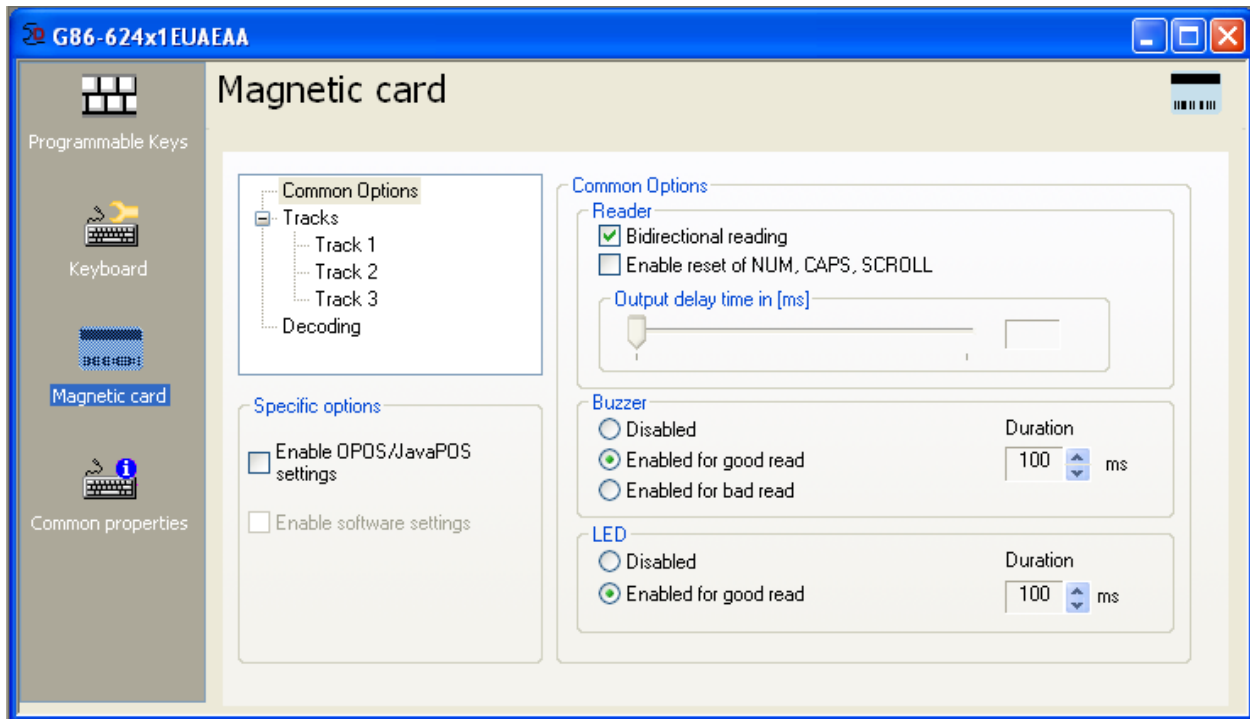
**Step 14:** Select “**Generate New Configuration**”, and then press **Next**.



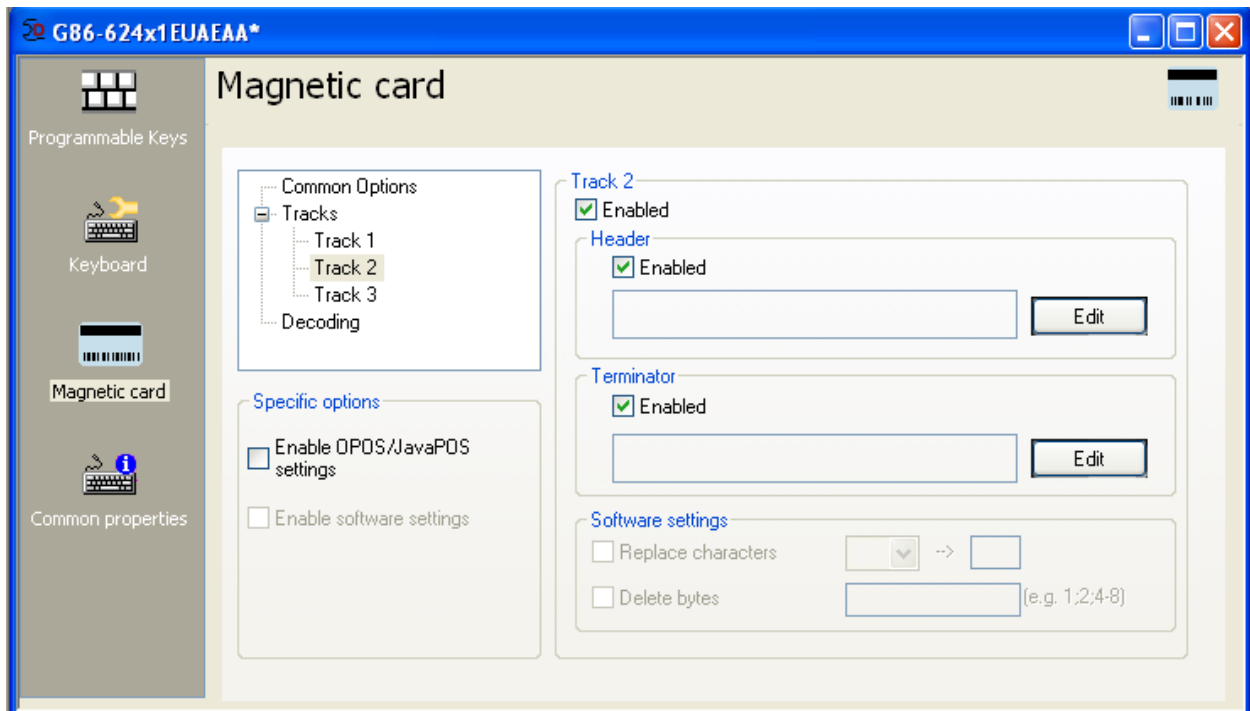
**Step 15:** Select your Keyboard type, and then click **Finish**.



**Step 16: Press Magnetic Card**

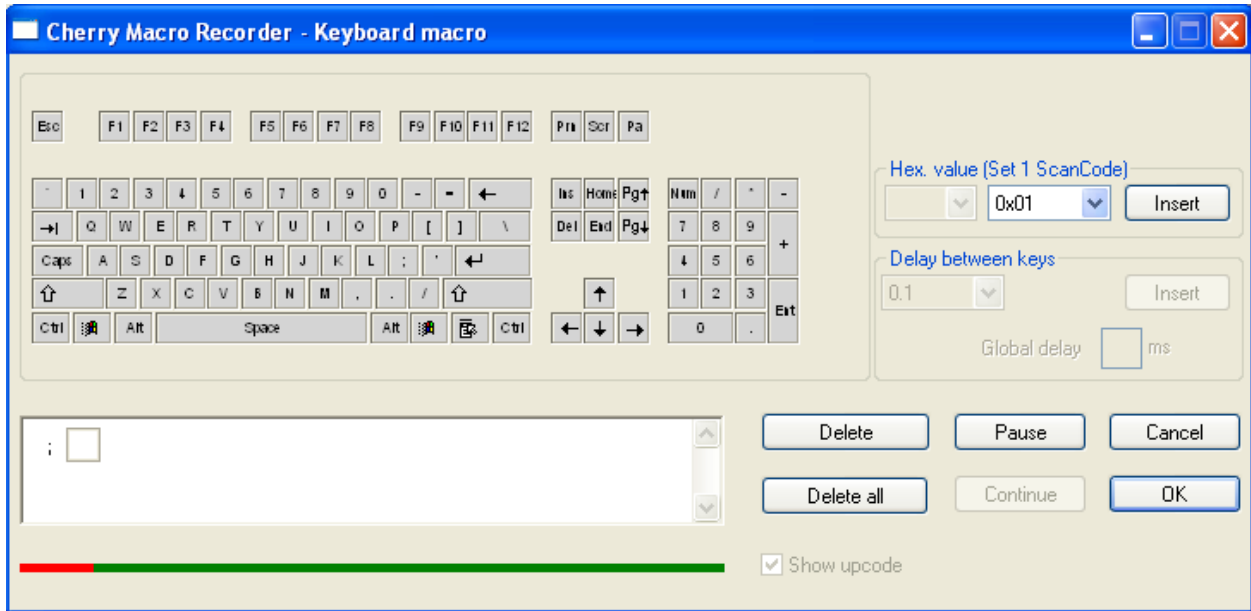


**Step 17: Select Track 2, make sure Header and Terminator are Enabled.**

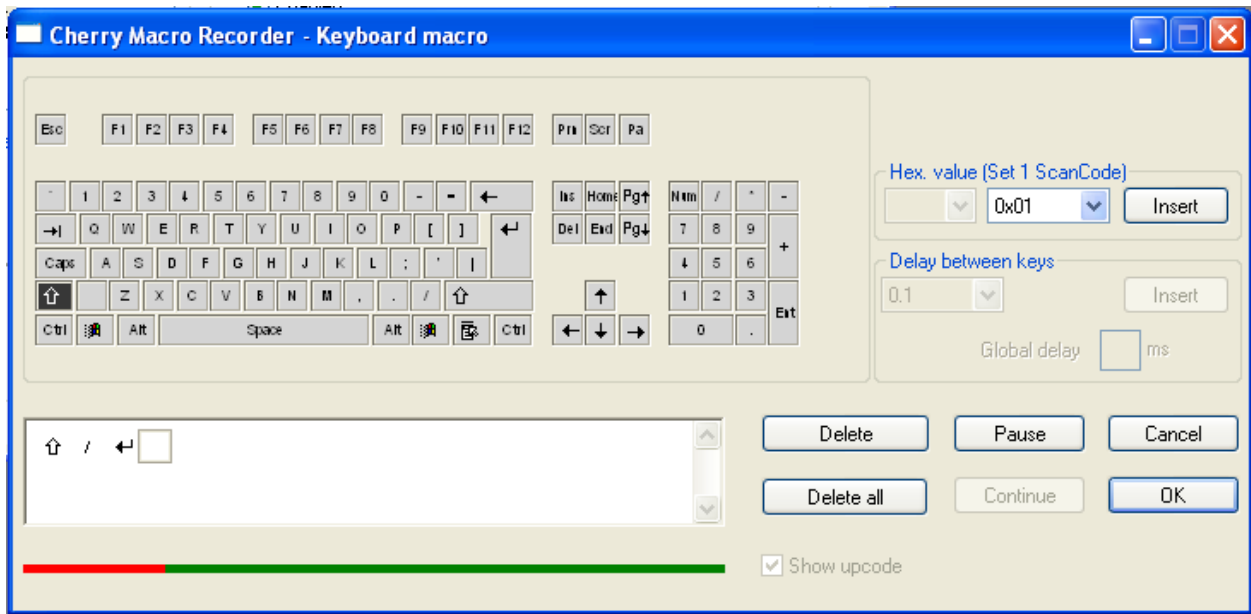




**Step 18:** Press **Edit** under Header, then press the ; (**semicolon**) on the on screen keyboard, click **OK**.



**Step 19:** Press **Edit** under Footer, then press the **Shift Key**, **"/"**, and **Return(Enter)** on the on screen keyboard. Click **OK**



**Step 20:** Press **activate**, your cherry keyboard is new ready to use with CornerStore.

