

Instruction To Enable Track 2 and Disable Beeper For MSR213U



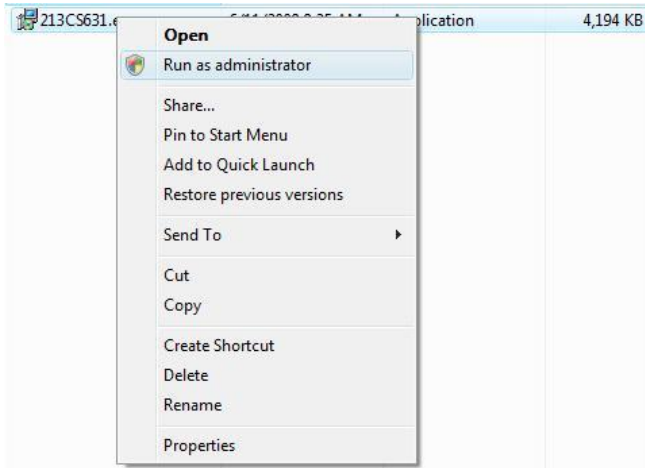
The MSR213U is compatible with the CornerStorePOS software. This guide will cover the ease of installation of the device.

Installation Instruction for MSR213U

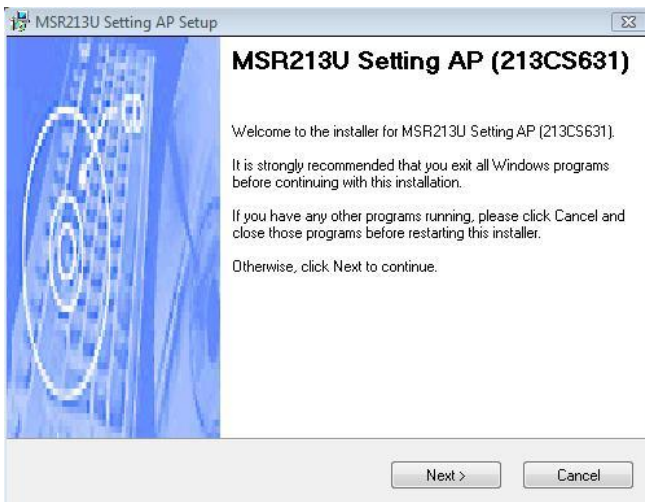
1. Download this exe file

<http://www.cornerstorepos.com/downloads/hardware/213CS631.exe>

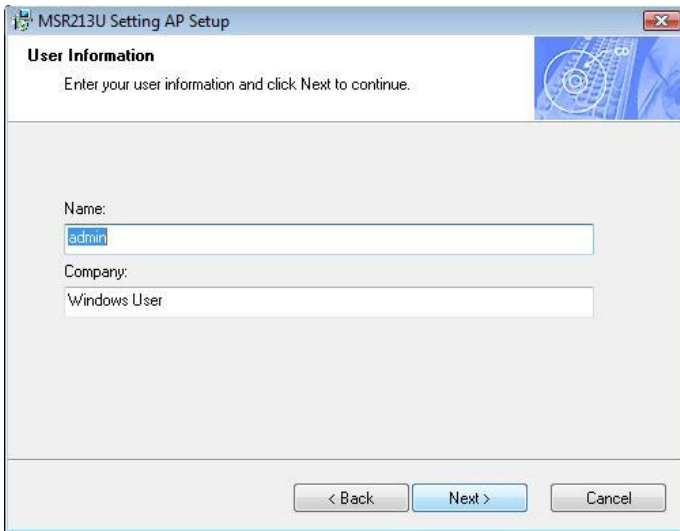
2. Run the file after it has been downloaded



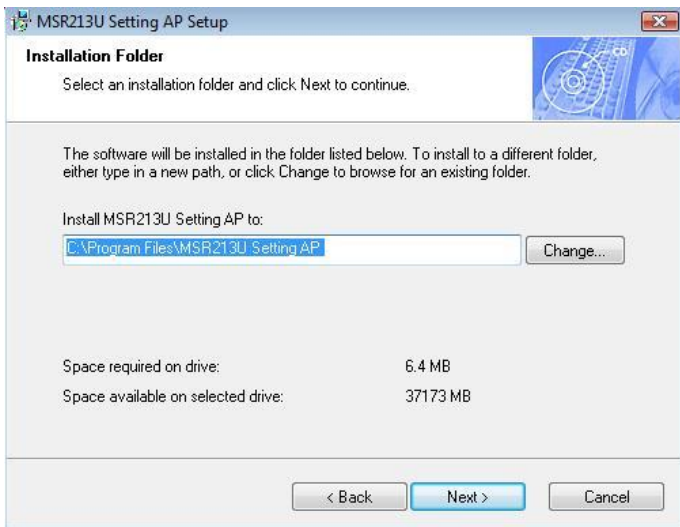
3. Click Next



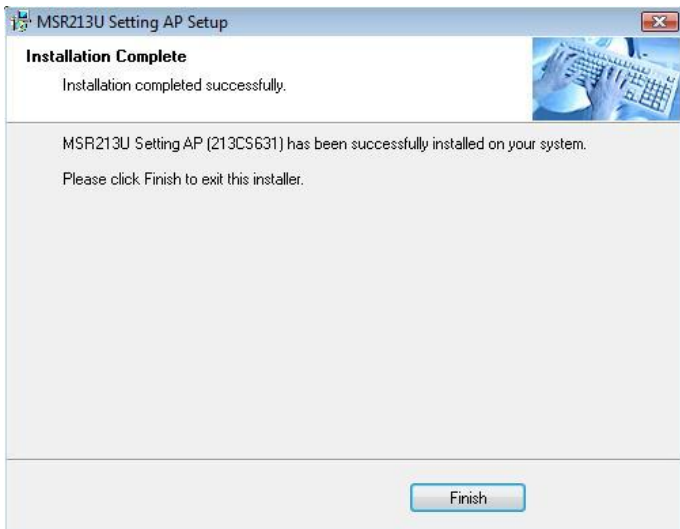
4. Click Next



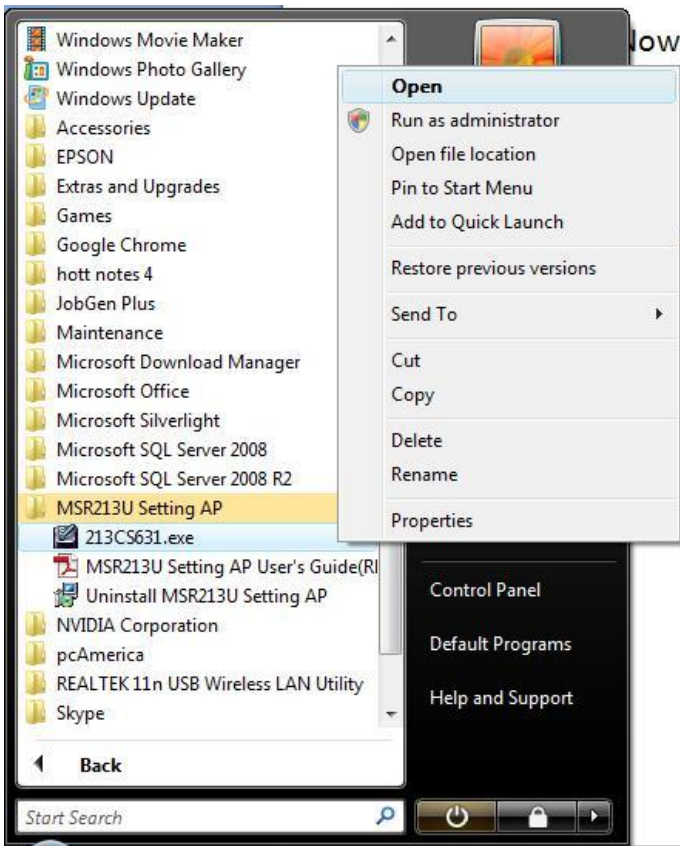
5. Click Next



6. Click Finish



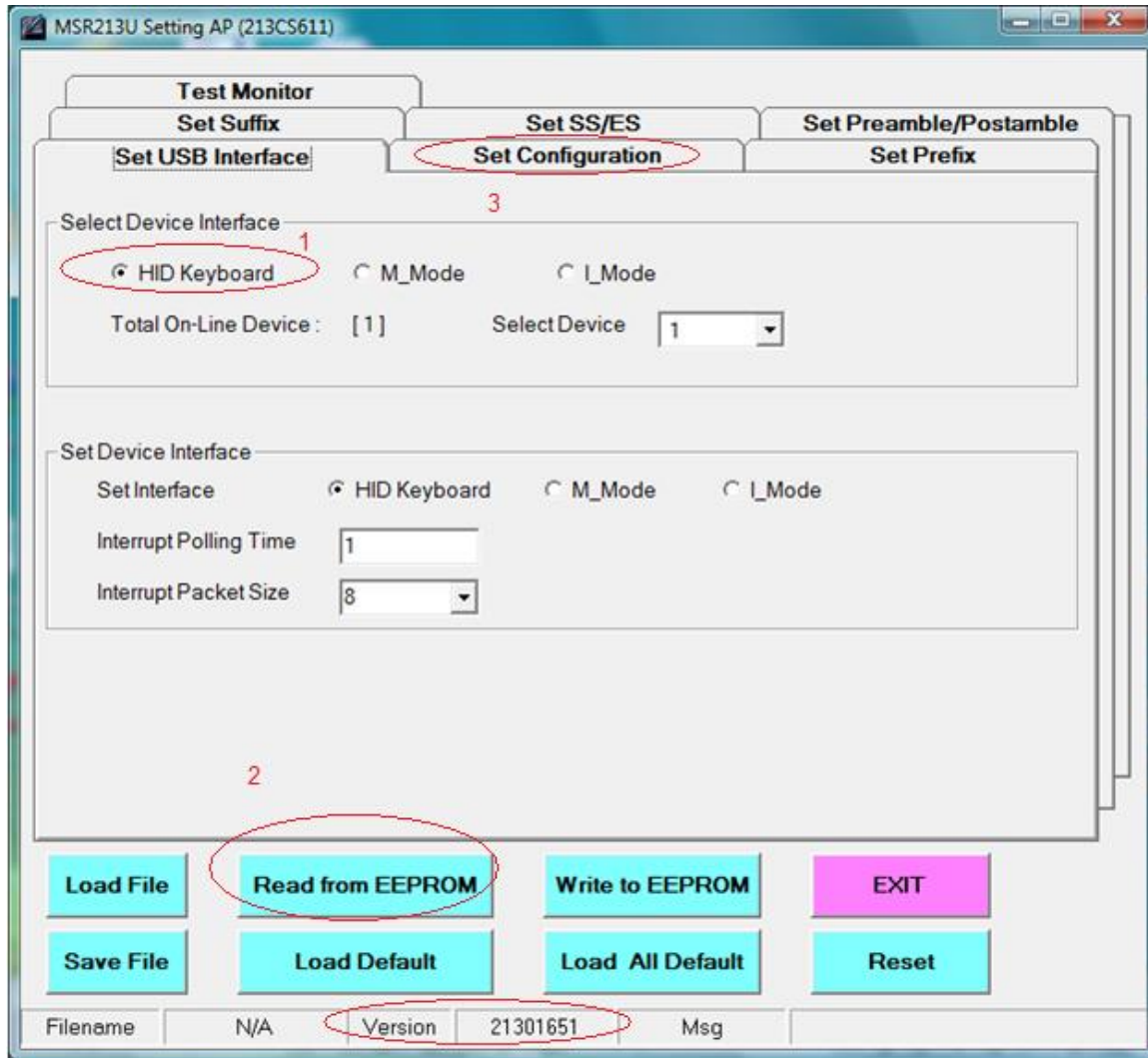
7. Now open the software which was installed. You can find it by clicking the Start button, clicking on All Programs, look for open the “MSR213U Setting AP” and then open “213CS631.exe”.



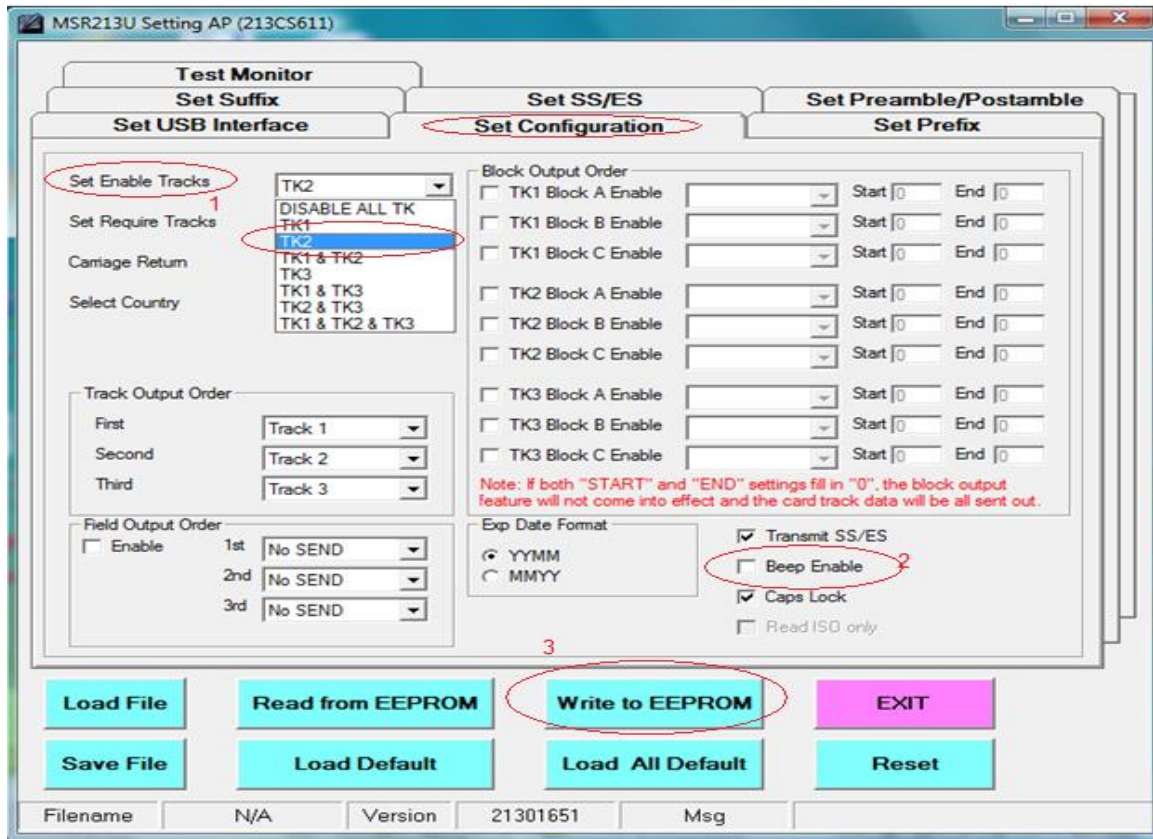
8. "Select Device Interface": HID.

Click on "Read From EEPROM", firmware version will be shown up as below.

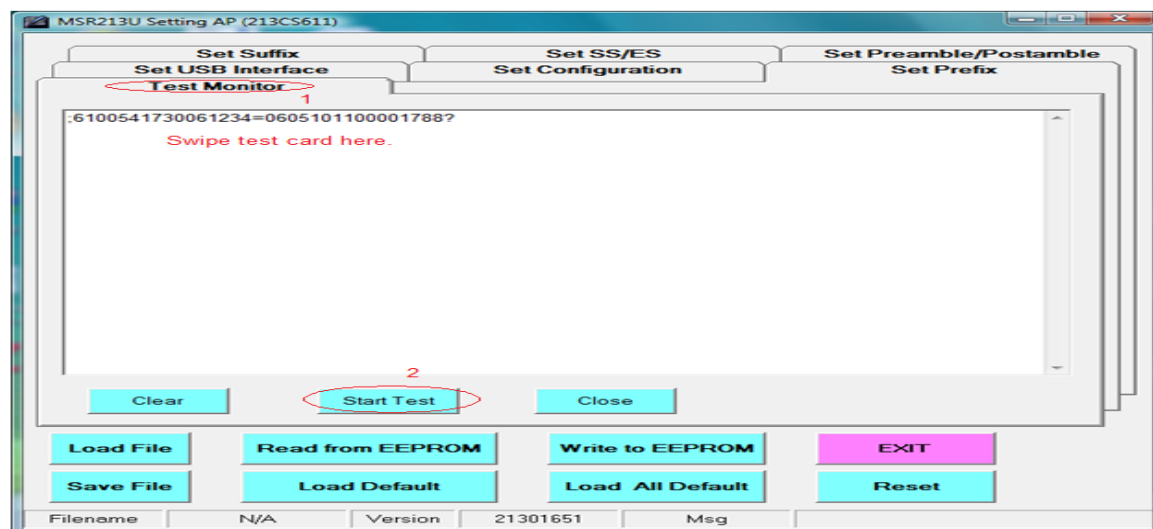
Click on "Set Configuration" tab.



9. “Set Enable Tracks”: Select TK2
Uncheck “Beep Enable”
Click on “Write to EEPROM”



10. Click on “Test Monitor” and “Start Test” then swipe test card to double check the setting result.



Now you should be able to use your MSR213U with CornerStore.