

INTERNATIONAL POINT OF SALE

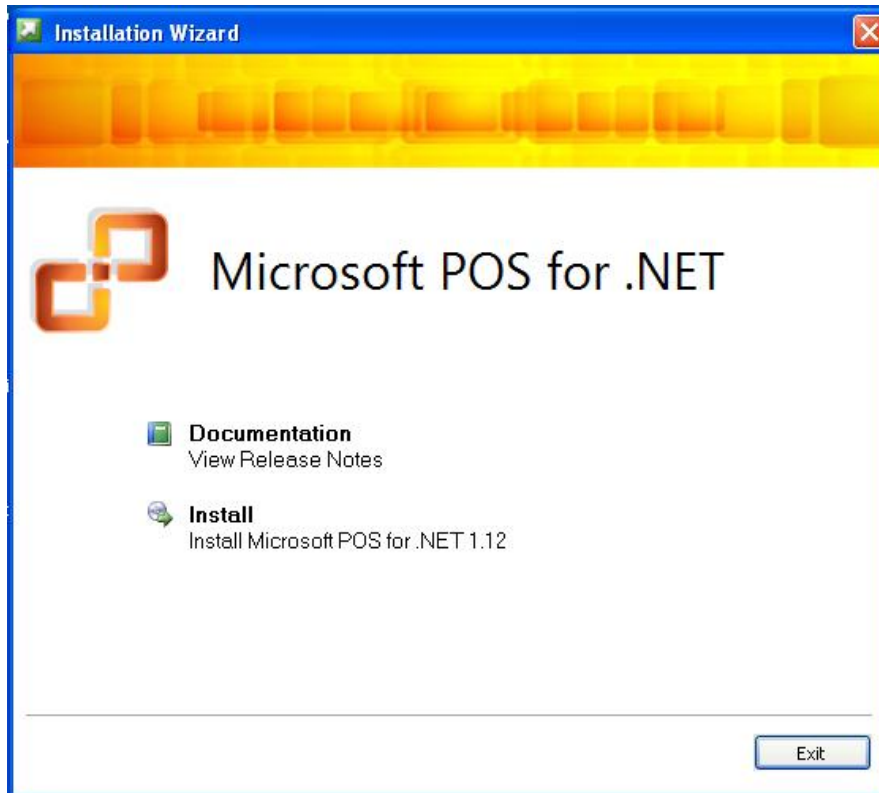
Installation instructions for the HP pole displays with Corner Store POS



Corner Store POS supports HP Pole Display. This document will detail the process of installing the correct drivers for HP Pole Display and then setting up in Corner Store POS.

Installing Microsoft POS for .NET

1. The Installer for Microsoft POS for .NET can be downloaded at:
http://cornerstorepos.com/downloads/hardware/POS_for_.Net.exe
2. Run the installer and select **Install**.



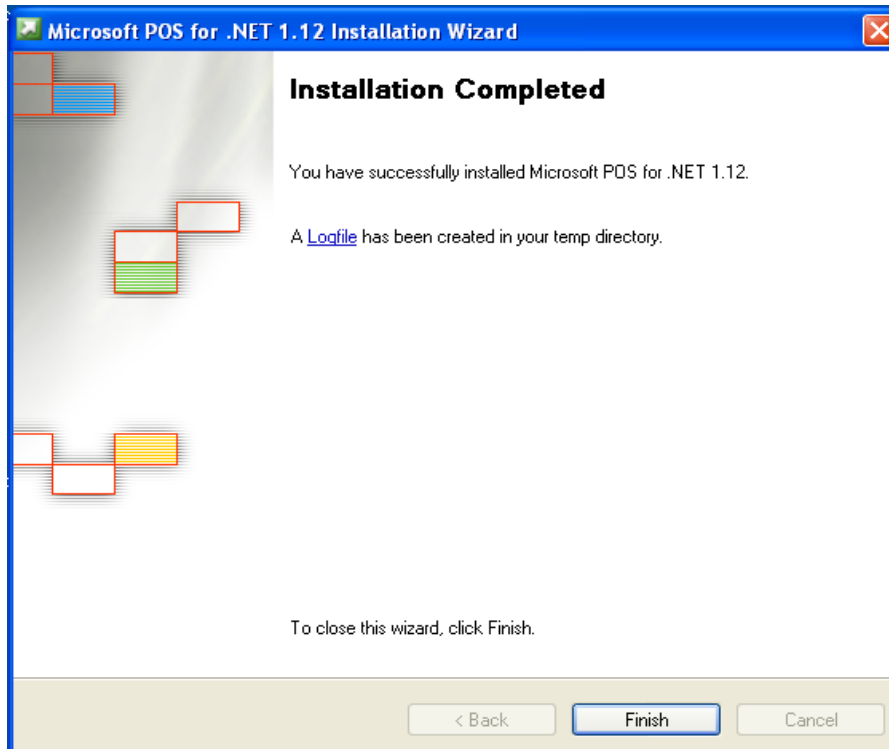
3. Enter **User Name** and **Organization** and select **Next**.

The screenshot shows the 'Customer Information' step of the installation wizard. The window title is 'Microsoft POS for .NET 1.12 Installation Wizard'. The main heading is 'Customer Information' with the instruction 'Type your information.' Below this, it says 'Enter your name and the name of your organization.' There are two text input fields: 'User Name:' containing 'intlpos' and 'Organization:' containing 'intlpos'. Below these is a section for the product key, with the instruction 'Provide the product key for this product in the boxes below.' The product key is displayed as 'BRRR3 · 4TPF9 · KVT2D · 688J4 · F33KH'. A note states 'The 25-character product key appears on the lower section of your certificate of authenticity.' At the bottom, there are three buttons: '< Back', 'Next >', and 'Cancel'.

4. Select **Accept**.
5. Select **Typical** and then **Next**.

The screenshot shows the 'Installation Options' step of the installation wizard. The window title is 'Microsoft POS for .NET 1.12 Installation Wizard'. The main heading is 'Installation Options' with the instruction 'Select the type of installation.' Below this, it says 'Select the type of installation that best suits your needs and the installation path.' There are three radio button options: 'Typical' (selected), 'Complete', and 'Custom'. To the right, under the heading 'Description', it says 'This option installs the runtime and admin components.' Below that, under 'Space allocation', it shows 'Total size required: 1.48 MB' and 'Space available on C: 4.41 GB'. At the bottom, there is an 'Install to:' field containing 'C:\Program Files\Microsoft Point Of Service\' and a 'Browse...' button. At the very bottom, there are three buttons: '< Back', 'Next >', and 'Cancel'.

6. Select **Install** and then **Finish**.



Installing HP OPOS Driver

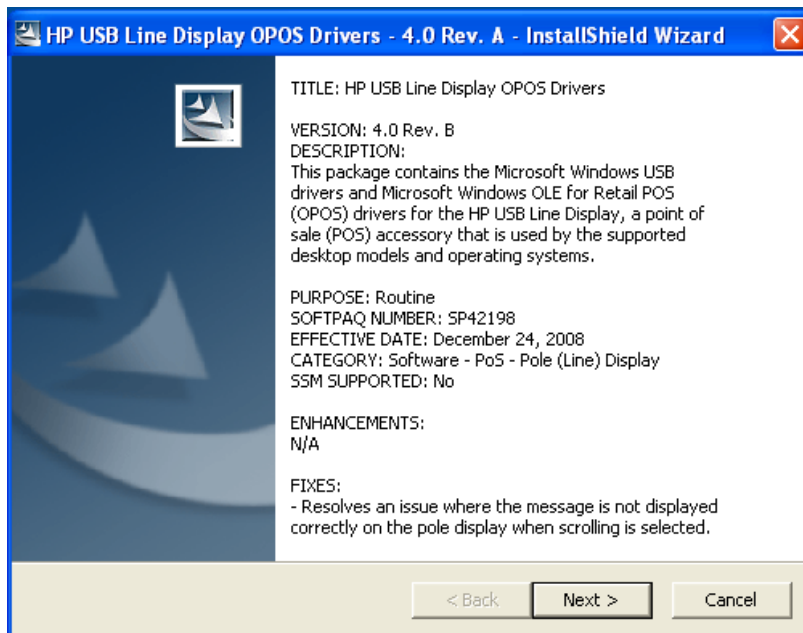
1. The OPOS driver for the HP can be downloaded at:
For Windows XP/VISTA:

http://cornerstorepos.com/downloads/hardware/HP_Pole_Display_OPOS_XP_VISTA.zip

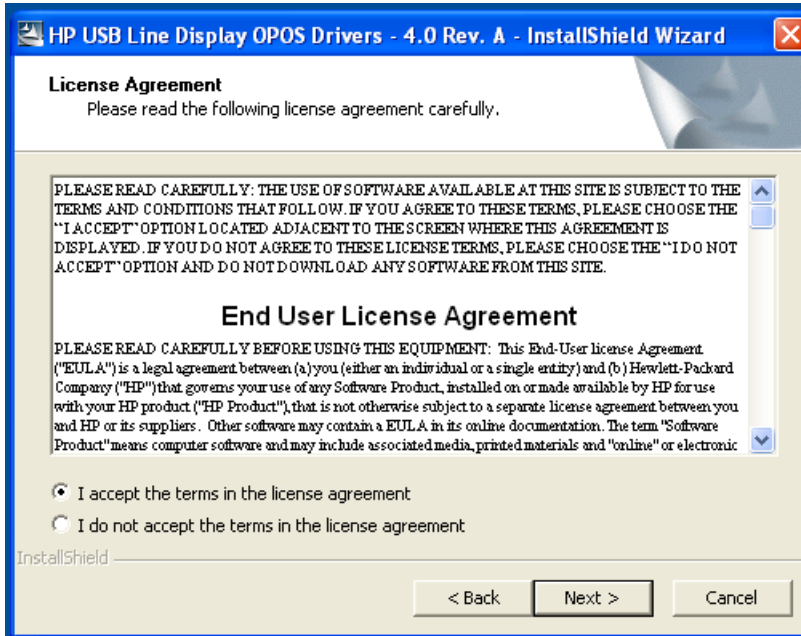
For Windows 7

http://cornerstorepos.com/downloads/hardware/HP_Pole_Display_OPOS_7.zip

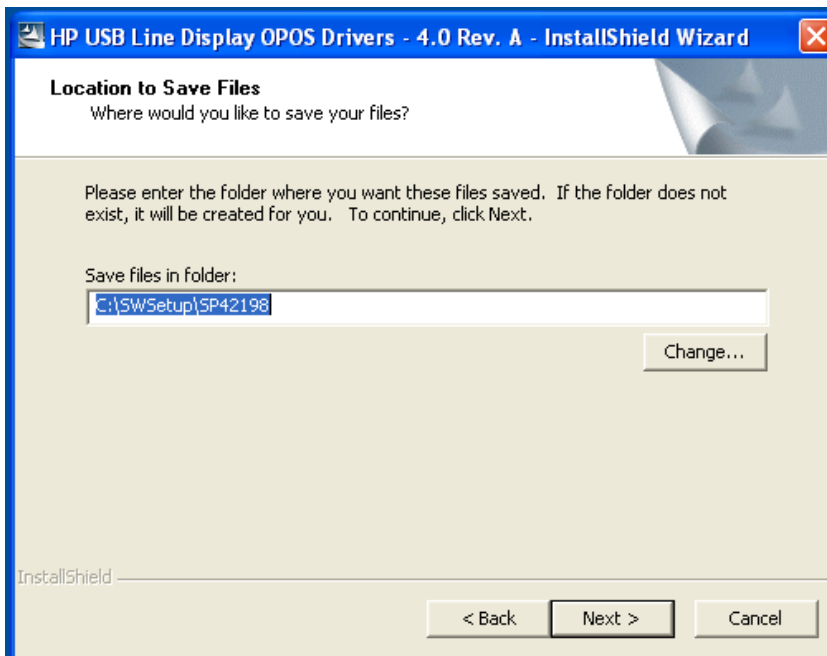
2. After downloading the driver extract and run the installer.
3. Select **Next**.



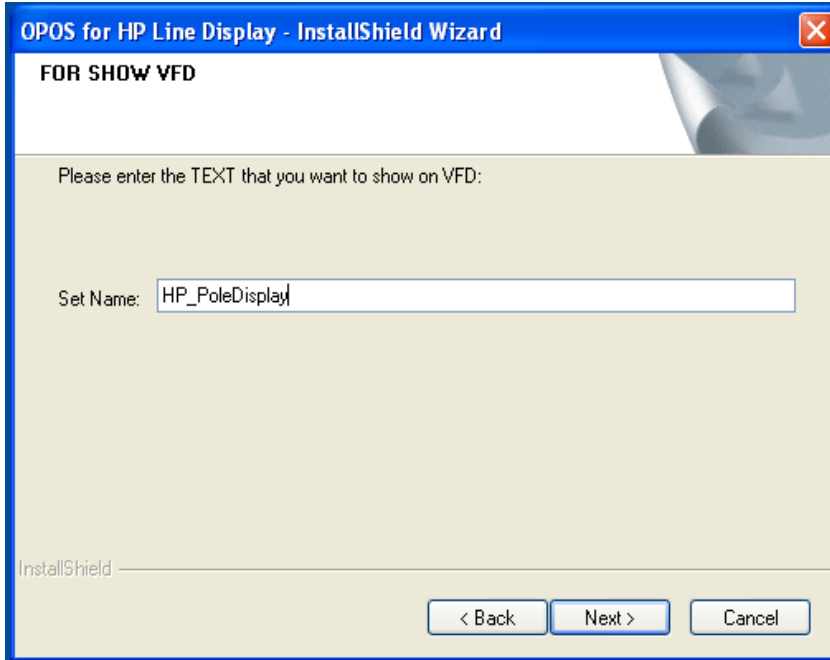
4. Select I accept the terms in the license agreement and select **Next**.



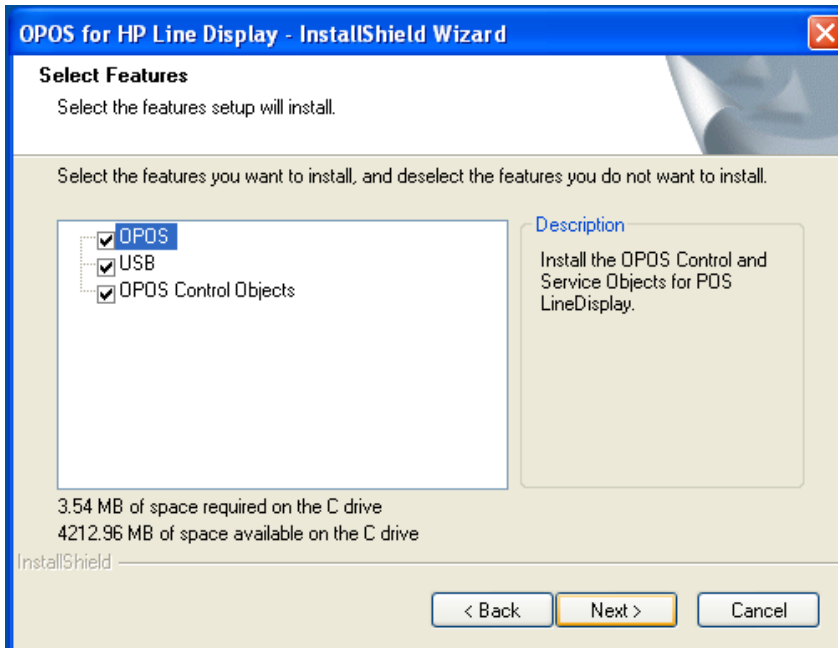
5. Select the location to save the install files and select **Next**.



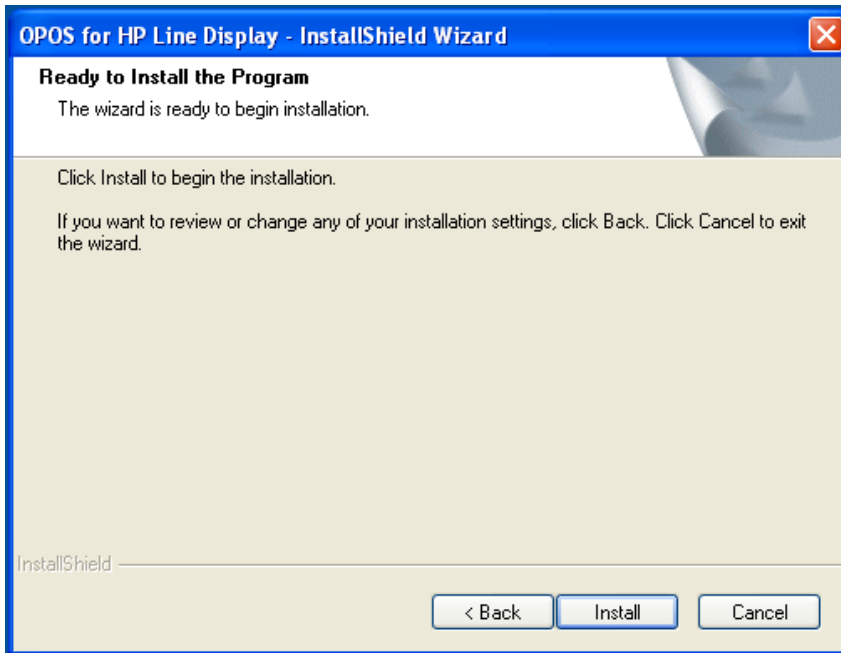
6. Select **Next** to begin the OPOS driver installation.
7. Enter a set name to display on the VFD and select **Next**.



8. Make sure all the options to be installed are checked and select **Next**.

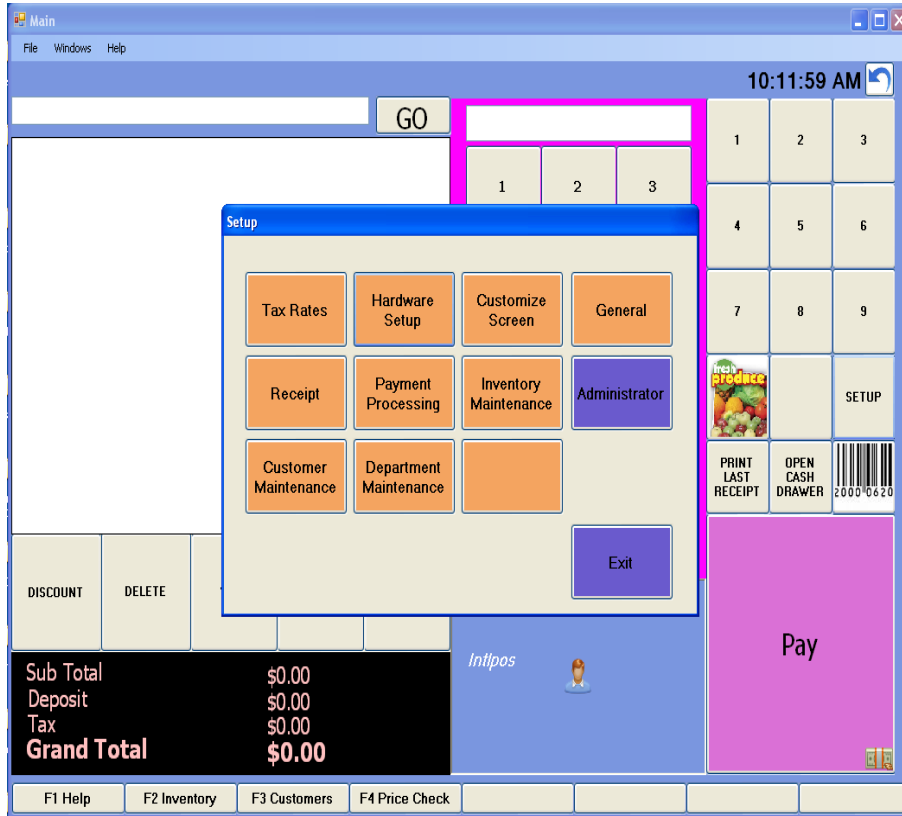


9. Select **Install** to install the Driver.



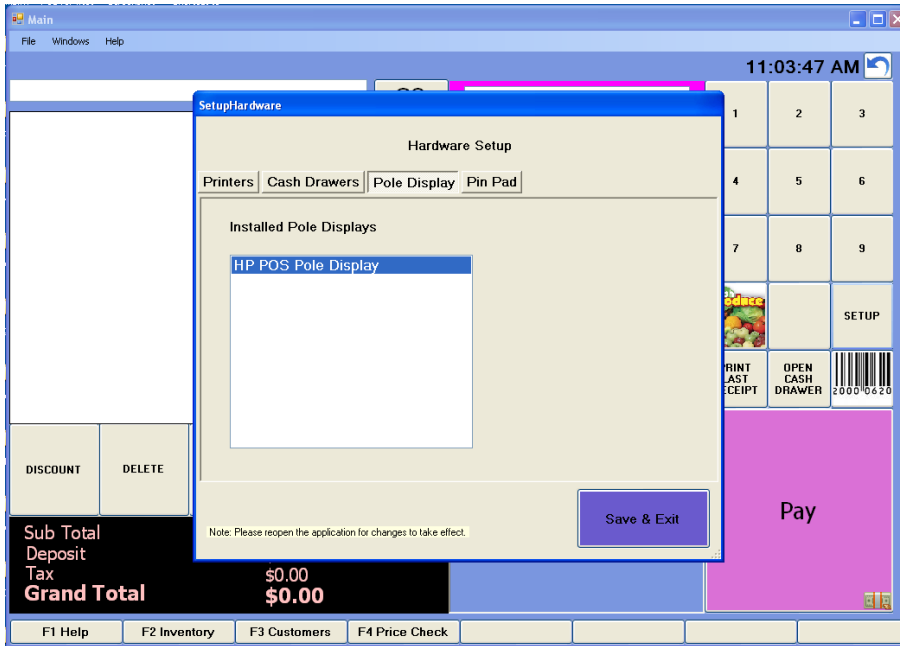
Using HP Pole Display with Corner Store POS

1. Open Corner Store POS>Set Up>Hardware Set up.



2. Within **Hardware Setup** select **Pole Display** tab.

3. Select the name of pole display which you had added within **Installed Pole Displays** list and then select **Save & Exit**.



4. To apply changes to take place closed Corner Store and re login.