

# INTERNATIONAL POINT OF SALE



Installation instructions for the AZT-805W Thermal Receipt Printer  
with CornerStore POS

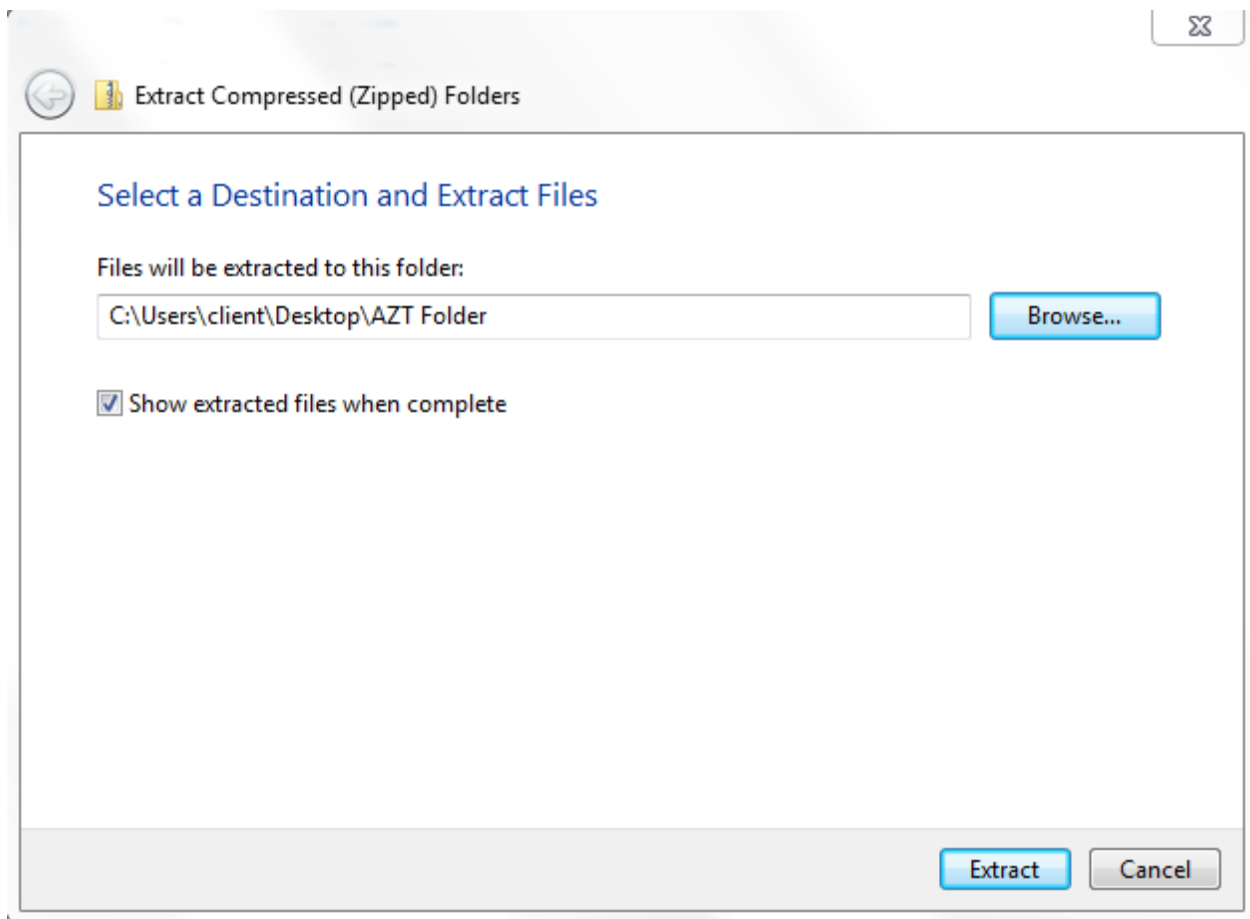


Corner Store POS supports AZT-805W. This document will detail the process of installing the correct drivers for the printer and cash drawer and then setting up the printer and cash drawer in Corner Store POS. Visit our [Our Store Site](#).

## Installing Appropriate Drivers

**NOTE: Please leave printer disconnected for driver installation**

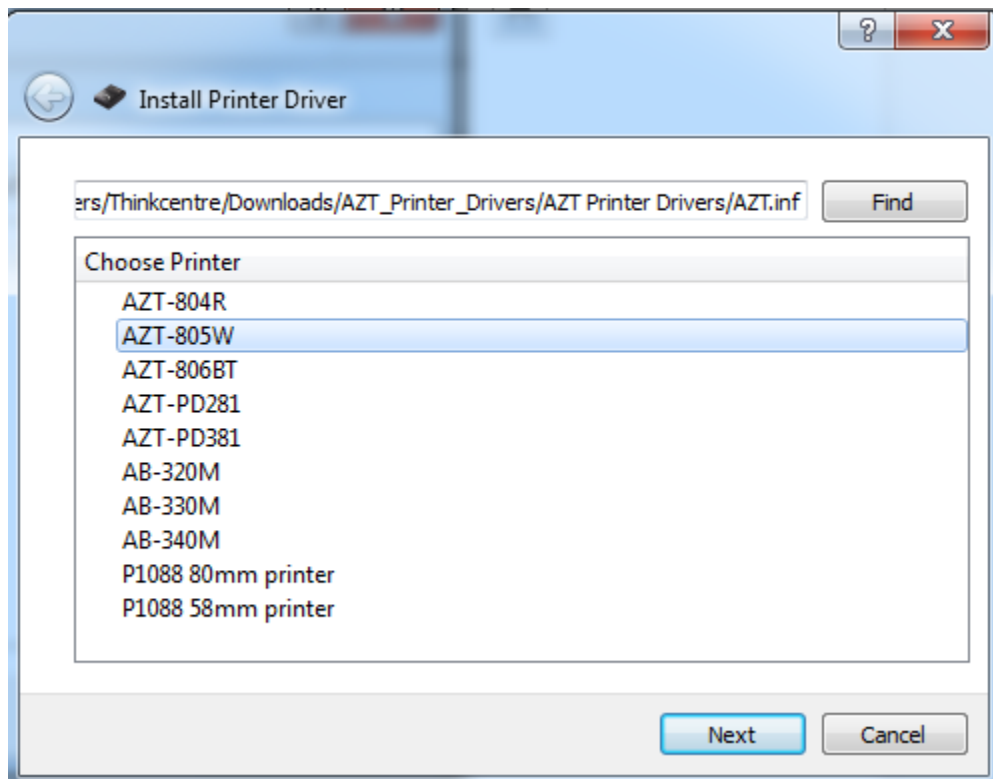
1. Start by running the setup.exe installer file, which can be downloaded at: [http://cornerstorepos.com/downloads/hardware/AZT Printer Drivers.zip](http://cornerstorepos.com/downloads/hardware/AZT%20Printer%20Drivers.zip)
2. Now, the file has to be unzipped. Please select any folder to download the file, and then click on Unzip.



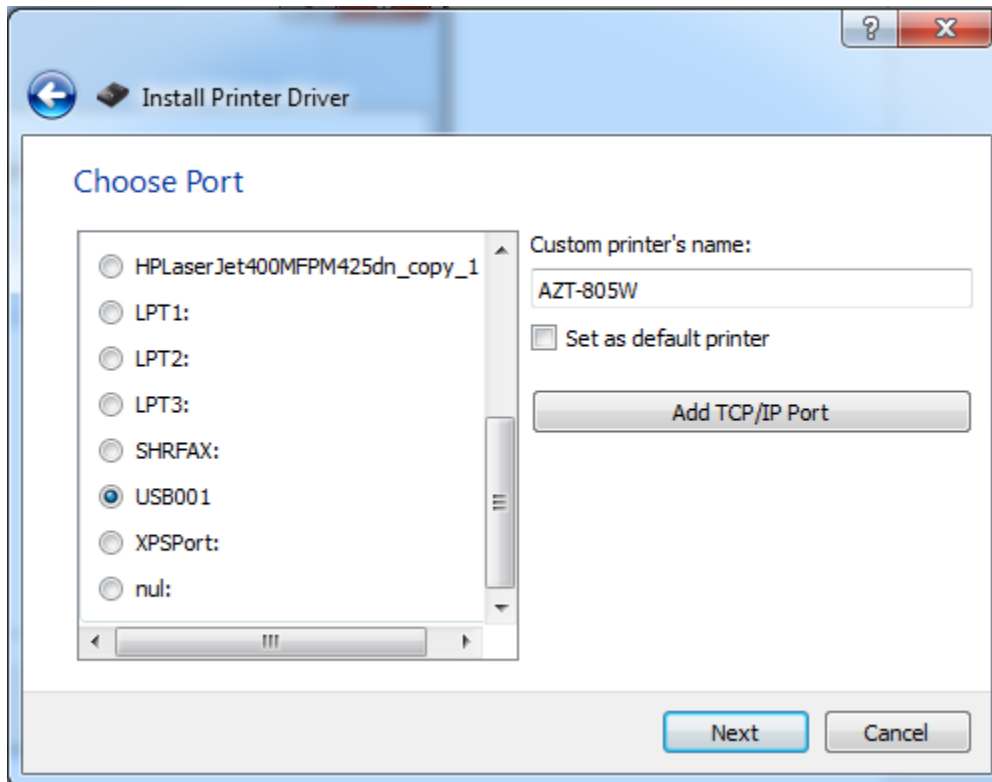
### 3. Select itool.exe

Name	Date modified	Type	Size
amd64	8/5/2015 2:37 PM	File folder	
i386	8/5/2015 2:37 PM	File folder	
AZT.inf	8/5/2015 2:37 PM	Setup Information	2 KB
cn.qm	8/5/2015 2:37 PM	QM File	1 KB
gpp.cer	8/5/2015 2:37 PM	Security Certificate	1 KB
<b>itool.exe</b>	8/5/2015 2:37 PM	Application	7,283 KB
zins.exe	8/5/2015 2:37 PM	Application	54 KB
zq.cat	8/5/2015 2:37 PM	Security Catalog	7 KB
zq.ini	8/5/2015 2:37 PM	Configuration sett...	1 KB
zt58.gpd	8/5/2015 2:37 PM	GPD File	4 KB
zt58c.gpd	8/5/2015 2:37 PM	GPD File	4 KB
zt80.gpd	8/5/2015 2:37 PM	GPD File	5 KB
zt112.gpd	8/5/2015 2:37 PM	GPD File	4 KB

### 4. Install Printer Driver pop-up will appear. Select AZT-805W and click next.



5. Then, select USB001 Port and click next.



6. The installation is complete, click on finish.

