

INTERNATIONAL POINT OF SALE

Instructions for setting up Samsung SPT 3000 and Hardware

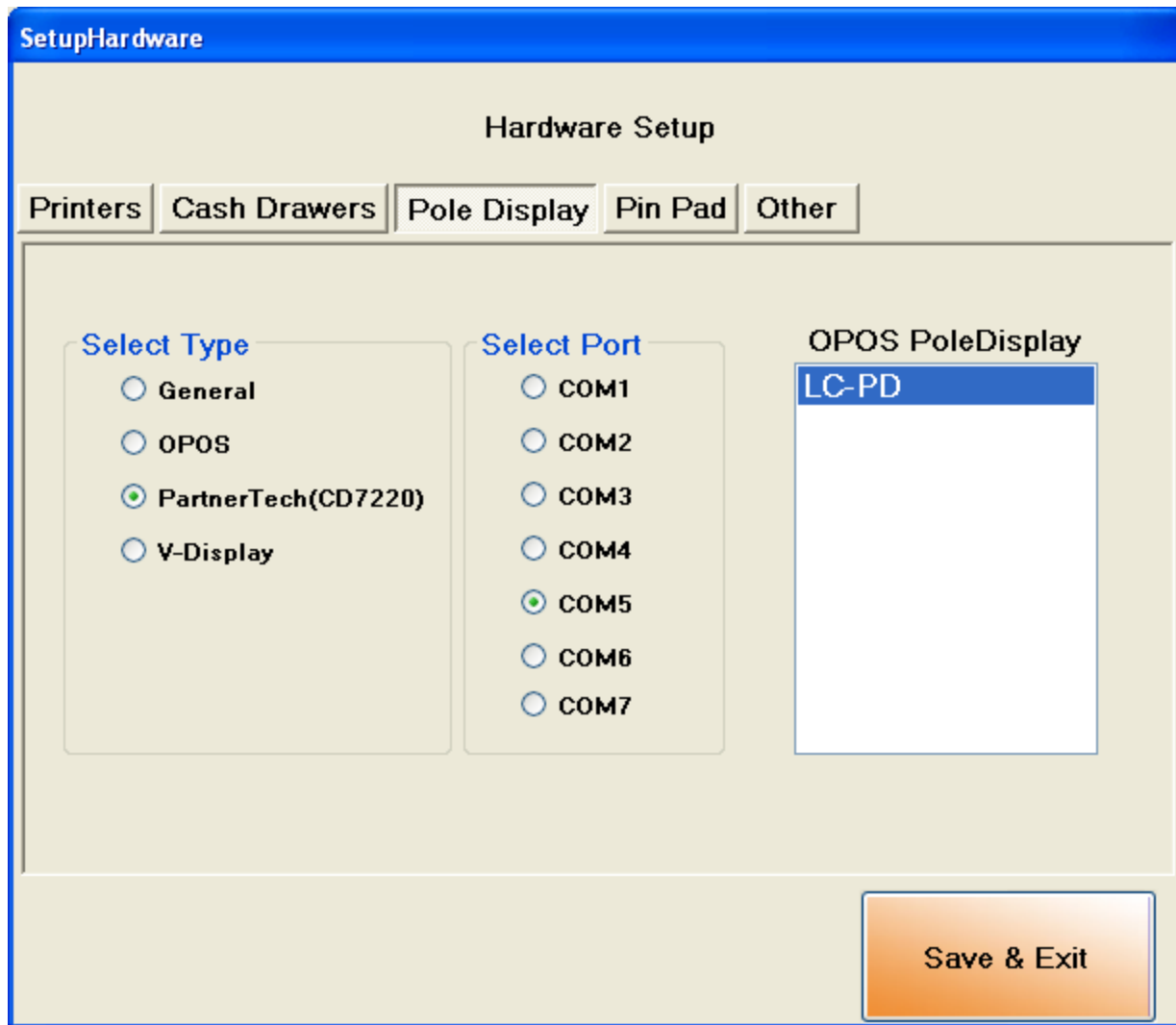


This guide will explain in detail how to set up the BTP-R880NP Printer/Drawer and Sam4s pole display with CornerStore.

Setting up the Pole Display (Sam4s)



The pole display requires almost no set up. Just plug in the RJ-45 slot behind the monitor. Open up CornerStore and go to **Main > Setup > Hardware Setup > Pole Display**. Select **PartnerTech(CD7220)** and select **COM5** as the port. Click **Save & Exit**.



Setting up the Printer and Cash Drawer (BTP-880NP)

Make sure CornerStore is closed during this installation

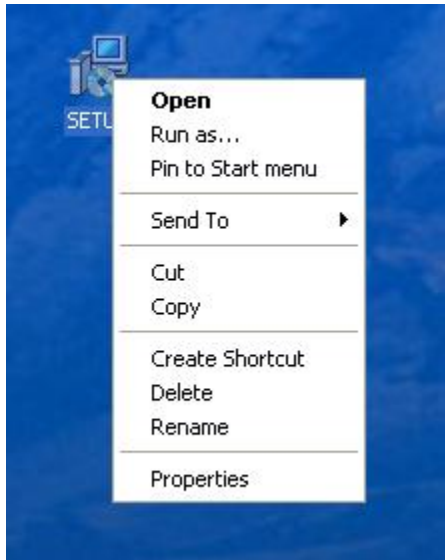
Step 1: Plug in the Printer into the slot designated **COM1** under the computer OR plug the USB into the computer and printer.

Step 2: Plug in the cash drawer into the **printer's RJ-11 port**.

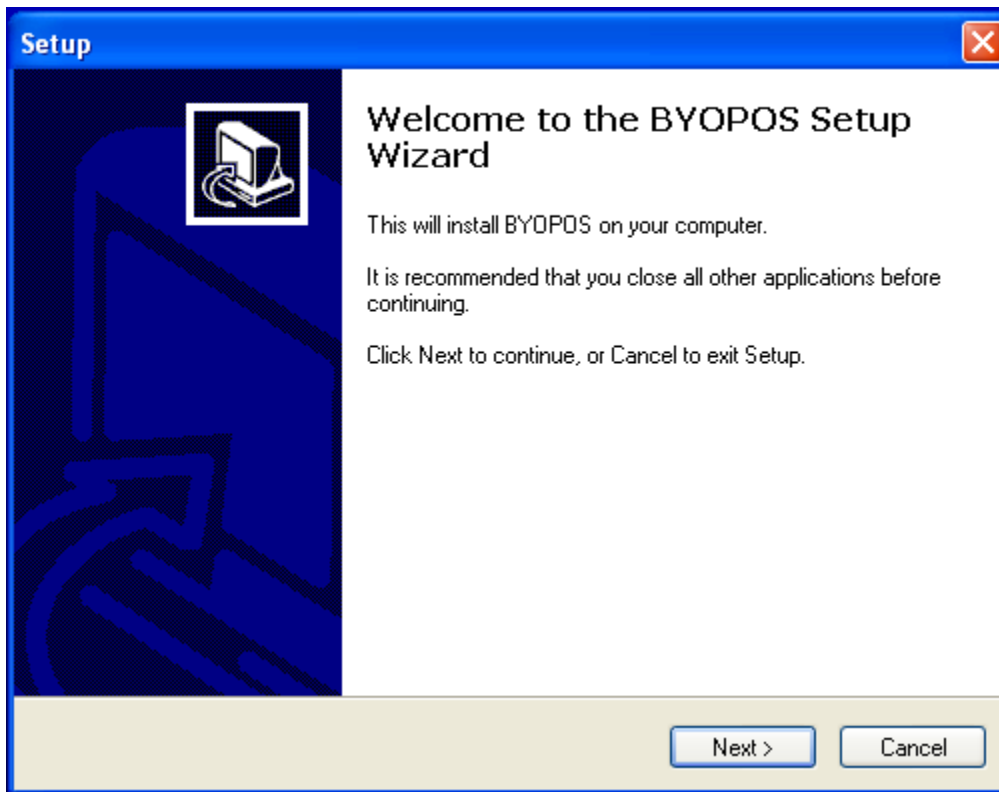
Step 3: Download the file from

http://cornerstorepos.com/downloads/hardware/Sam4s_V2.68.zip

Step 4: Run the Setup file

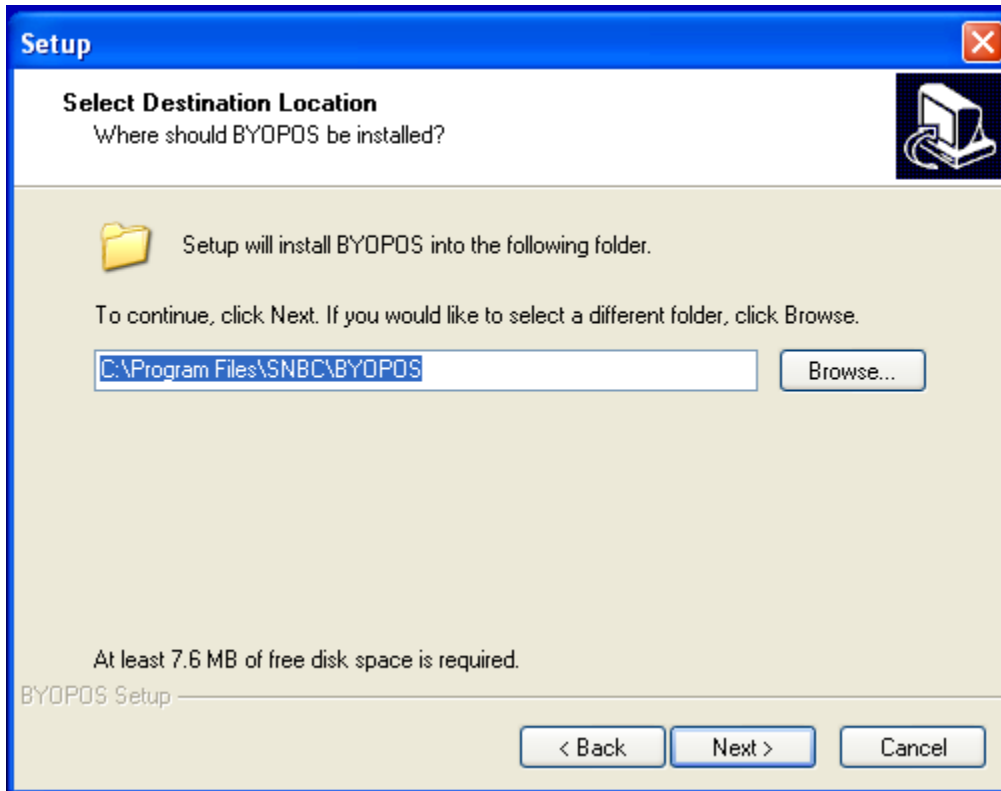


Step 5: Click Next

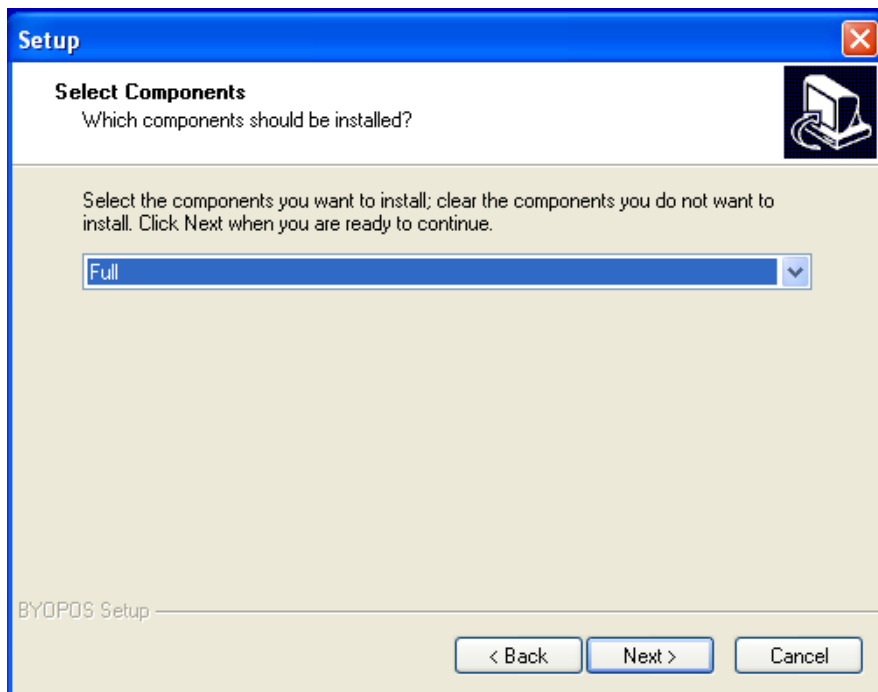


Step 6: Check I accept and click Next.

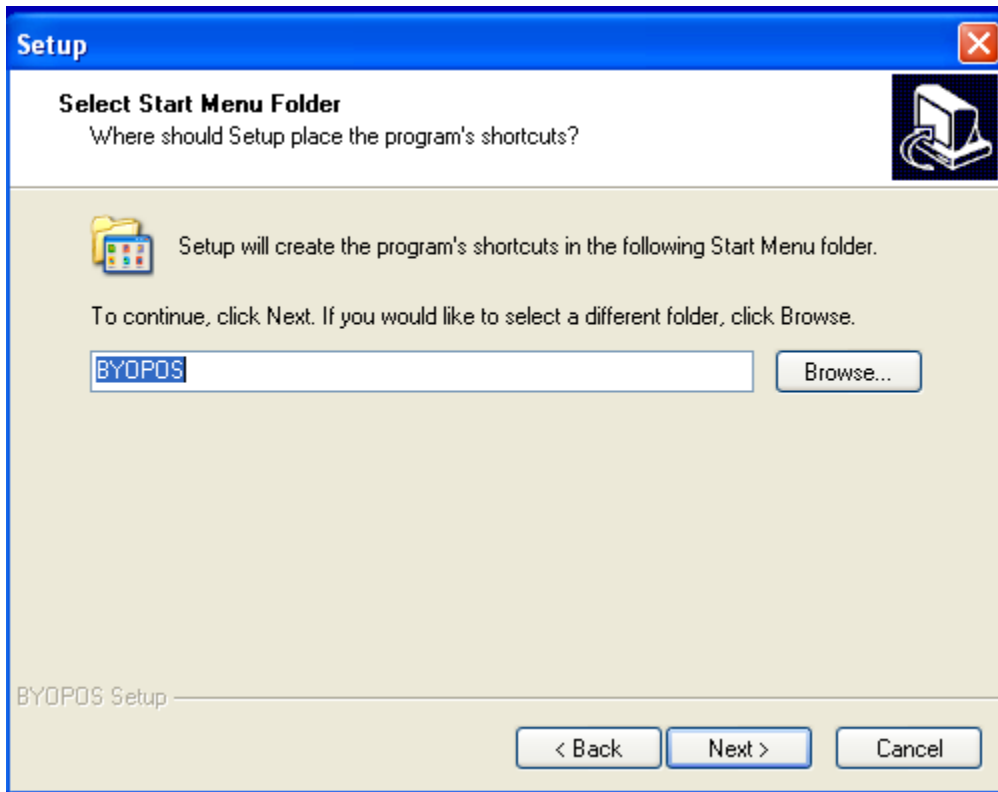
Step 7: Click Next



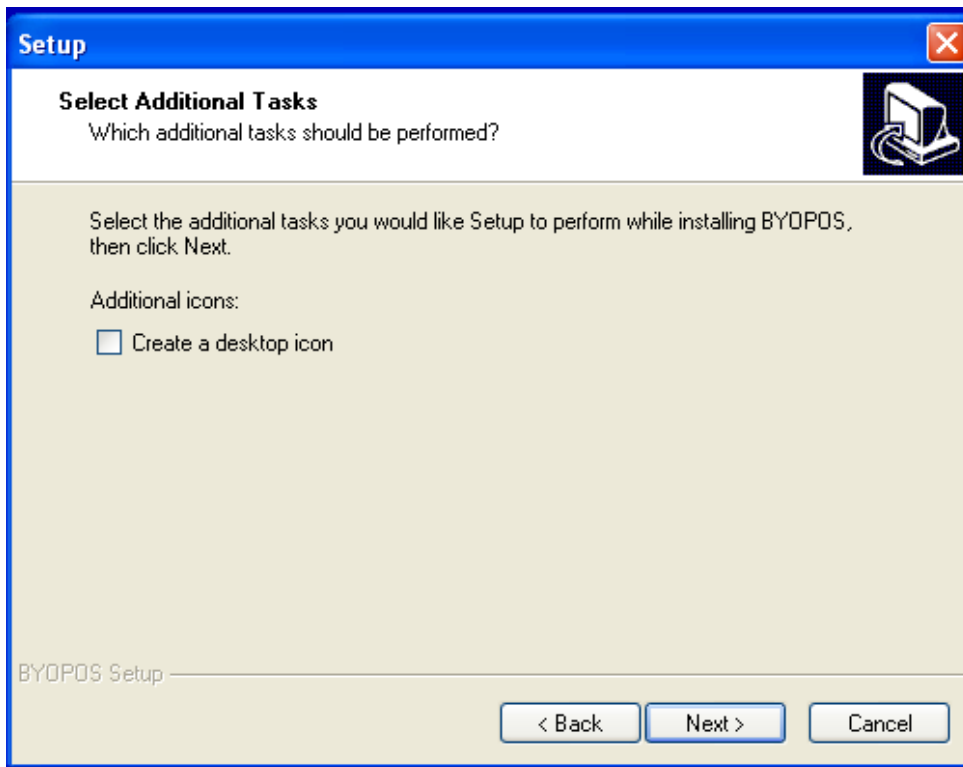
Step 7: Click Next



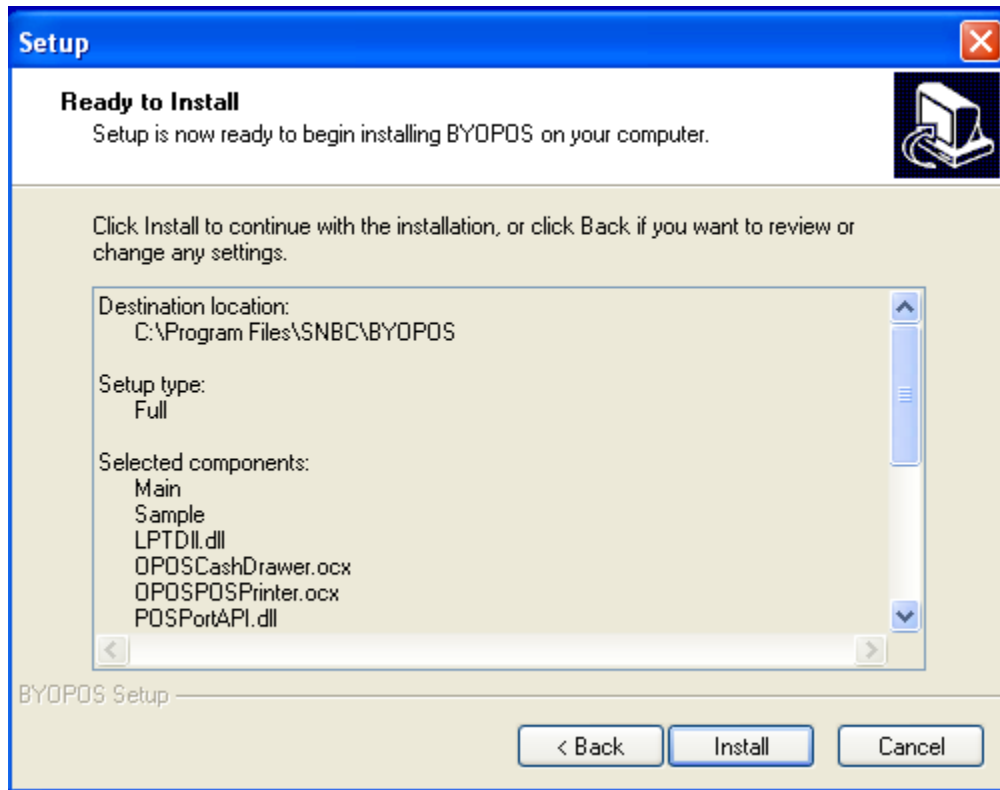
Step 8: Click Next



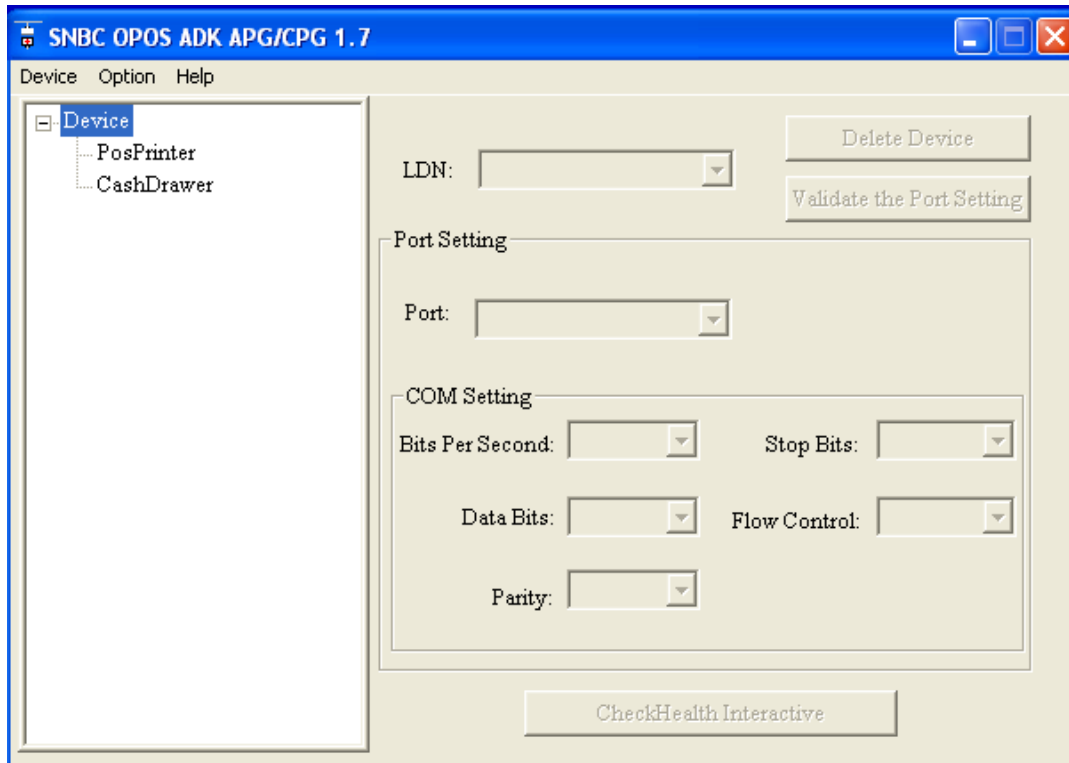
Step 9: Click Next



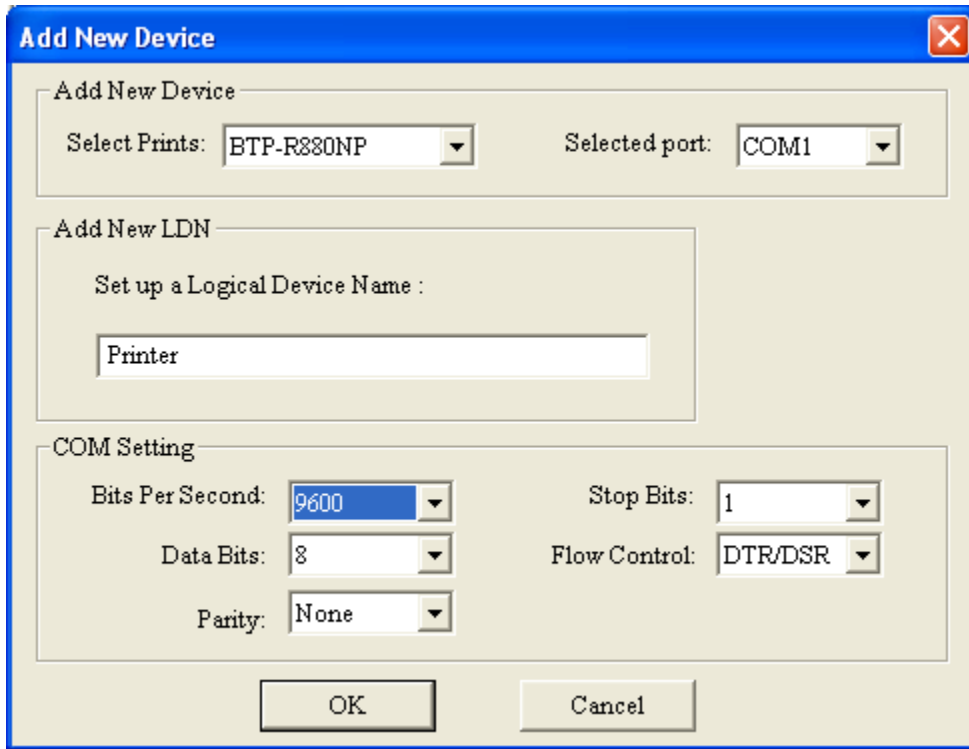
Step 10: Click Install



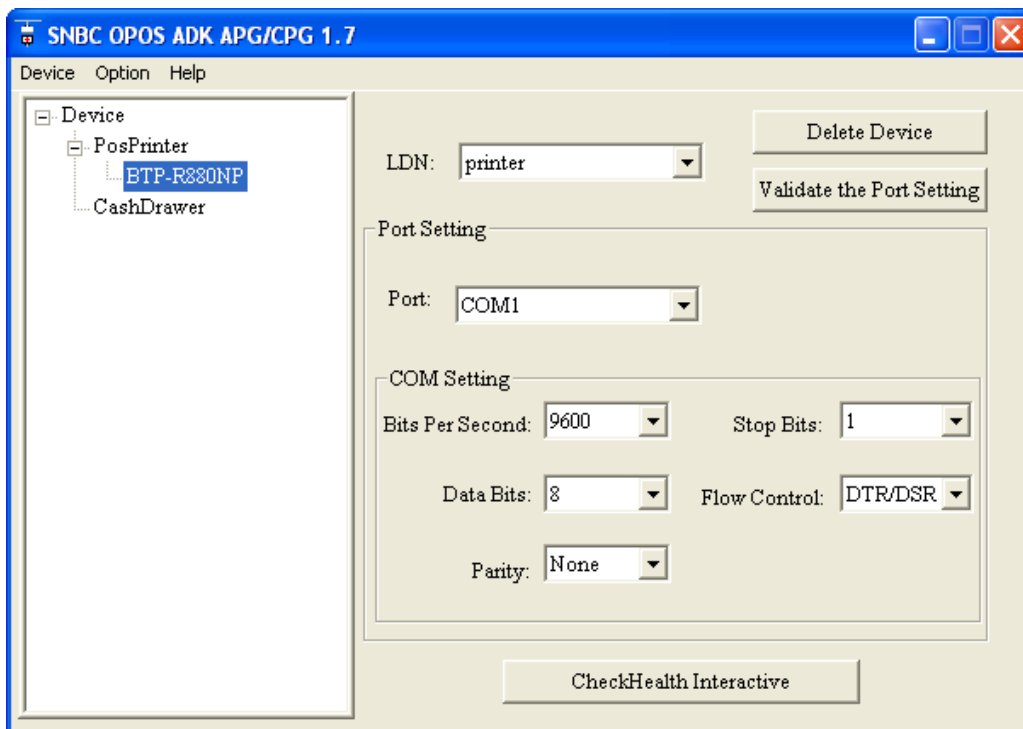
Step 11: The window should Pop up, click Device and click Add Printer.



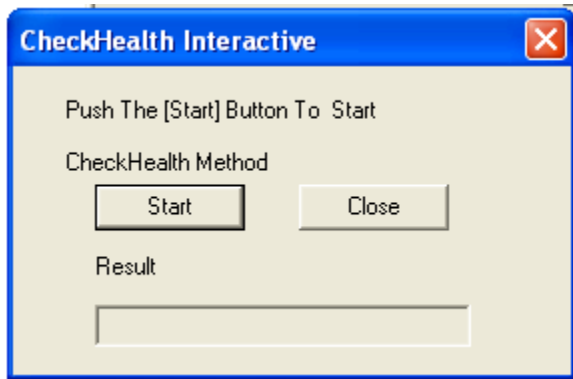
Step 12: Select **BTP-R880NP** as the Printer, **COM1** as the port if you are using a serial connection, **USB** if you are using a USB connection (a prompt will look for it), give the device a **logical name** and set the **Bits Per Second to 9600**. Make sure your window looks like this, click **OK**.



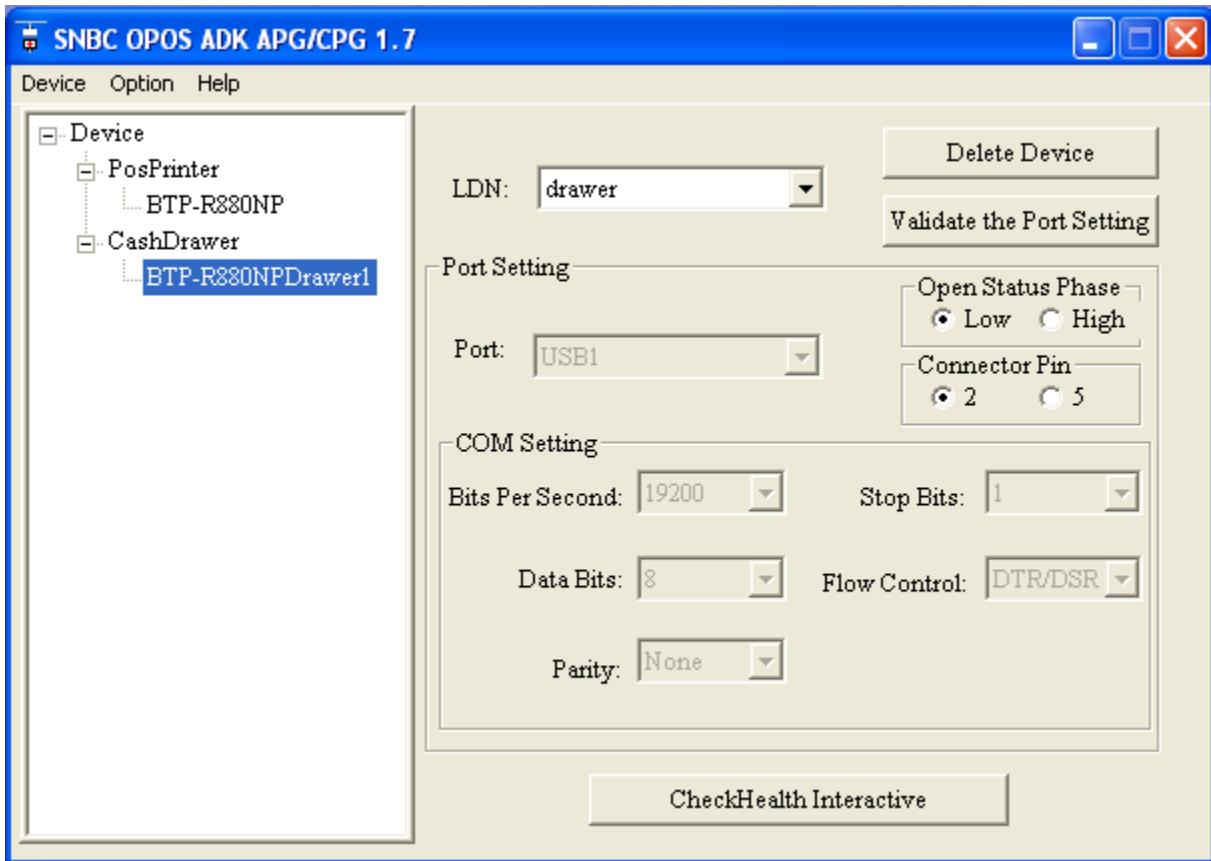
Step 13: Click **POS Printer** then click the **BTP-R880NP**. Click **Check Health**



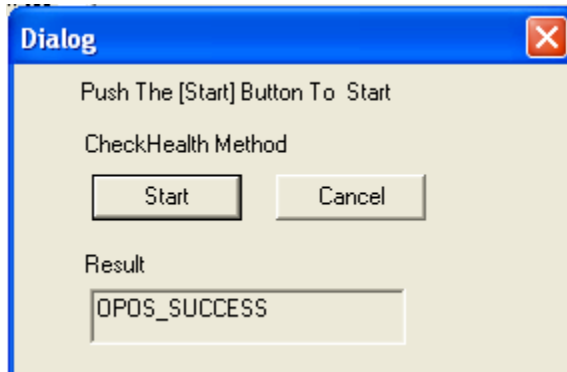
Step 14: Click **Start**, it should say **OPOS SUCCESS**



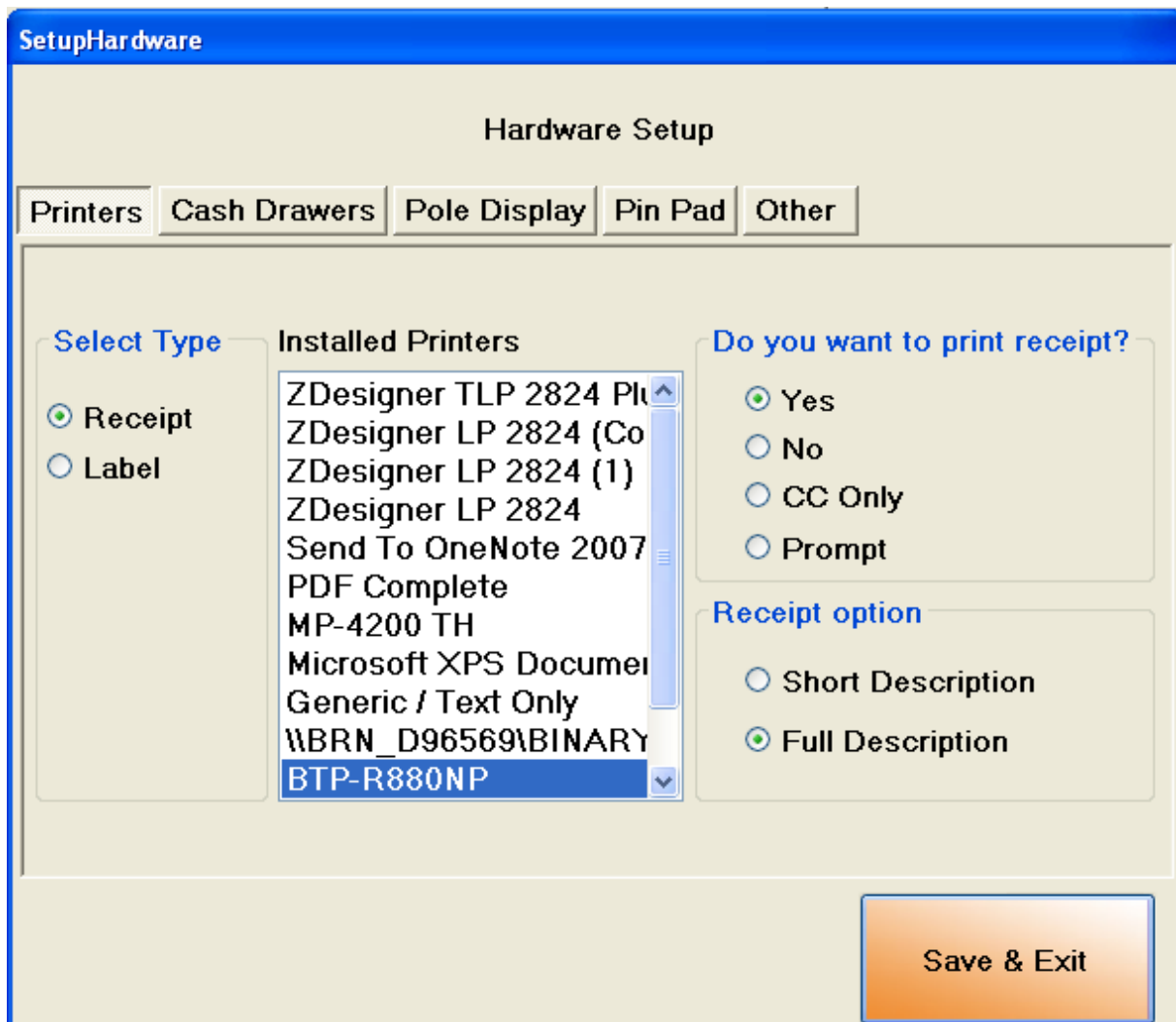
Step 15: Click **Device** then add **CashDrawer**, select the **printer** you have just set up for the proper port. And **type in a name** for the drawer. Click **OK** when you are done.



Step 16: Click **CashDrawer** then select the **BTP-R880NPDrawer1** then click **CheckHealth Interactive**. Click **Start**, a **success message** should appear.



Step 17: Open up **CornerStore** and go to **Main > Setup > Hardware Setup**. Click on **Receipt** for printer type. Select the **BTP-R880NP** printer, and **select your choice of receipt option** and a **Full or Short receipt description**.



Step 18: Click on the **Cash Drawers** tab, select the **BTP-R880NPCashDrawer1** and click **Save & Exit**.

