

INTERNATIONAL POINT OF SALE

Instructions for Installing the EPSON TM-T20

WINDOWS DRIVERS



This guide will go over how to install the EPSON TM-T20 using windows drivers, and how to set it up with CornerStore

Downloading and Installing the Drivers

Step 1: Download the drivers here:

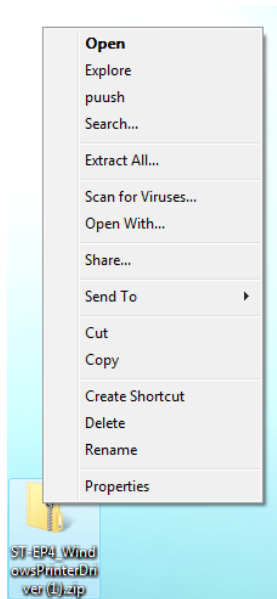
Windows XP/VISTA 32/64B System:

http://cornerstorepos.com/downloads/hardware/APD_410E_XPVista.zip

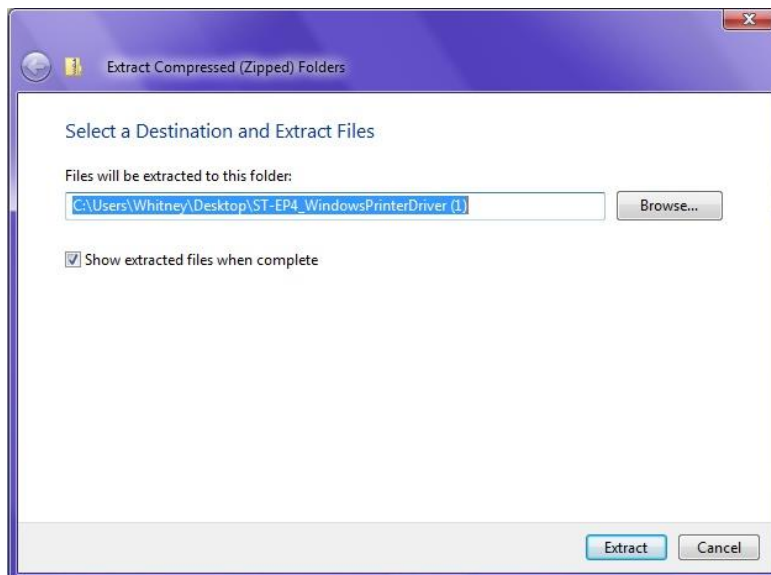
Windows 7 32B/64B System:

http://cornerstorepos.com/downloads/hardware/APD_413E_Win7.zip

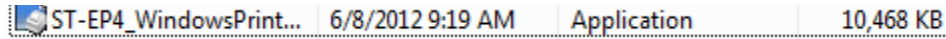
Step 2: Right click the folder, and select **Extract All...**



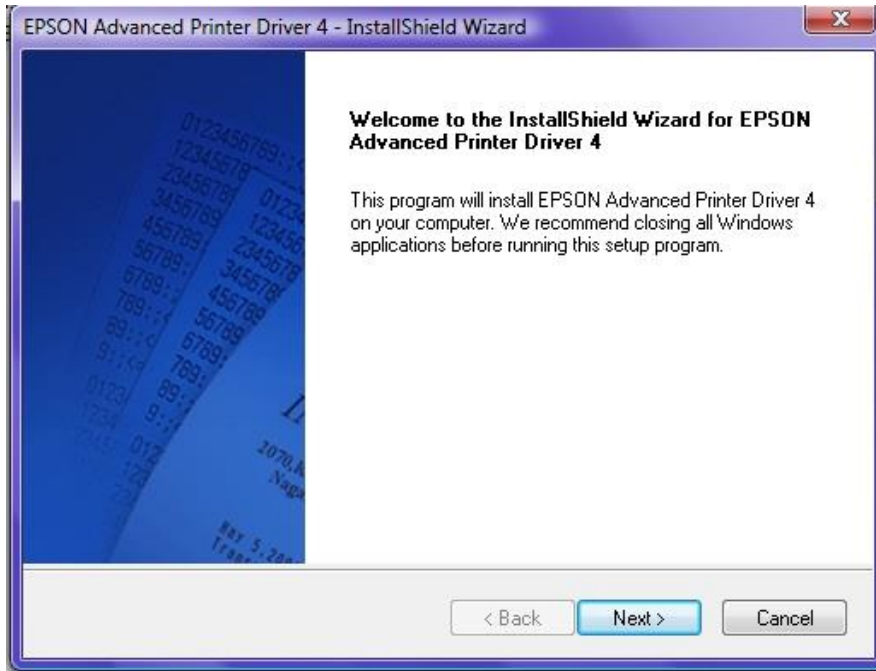
Step 3: Select **Extract.**



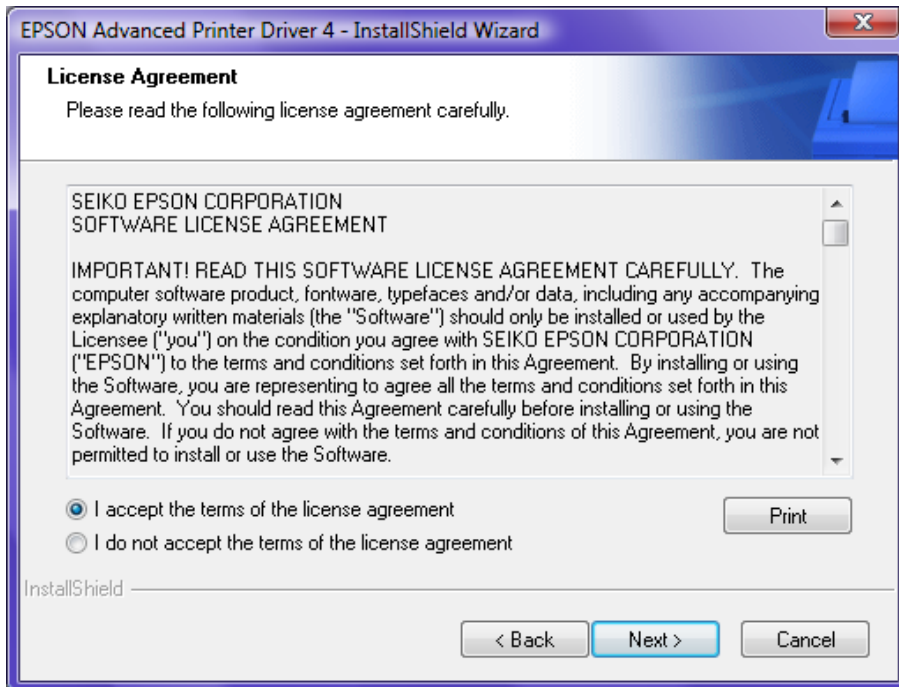
Step 4: Click and run the ST-EP4 WindowsPrinter driver.



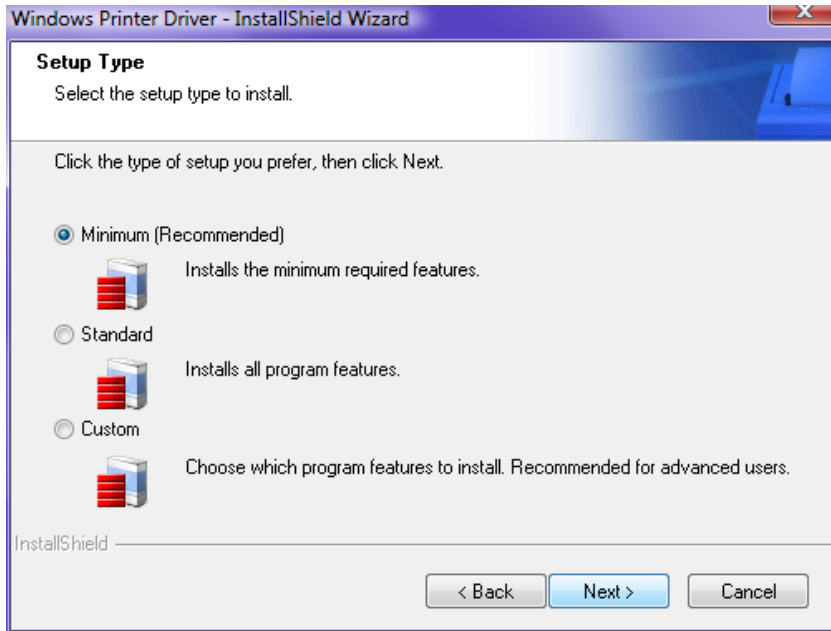
Step 5: Click Next.



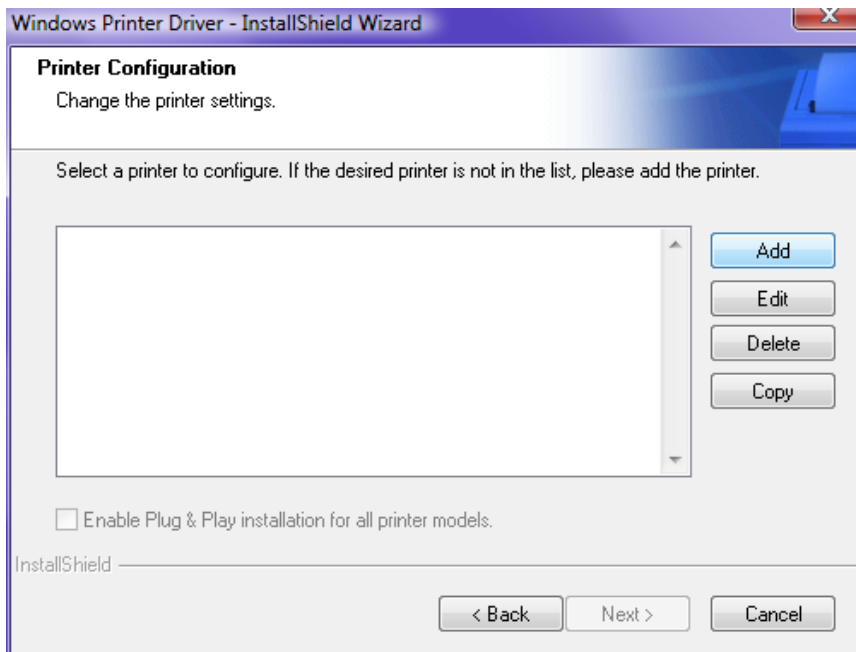
Step 6: Select I accept the terms of the license agreement. Click Next.



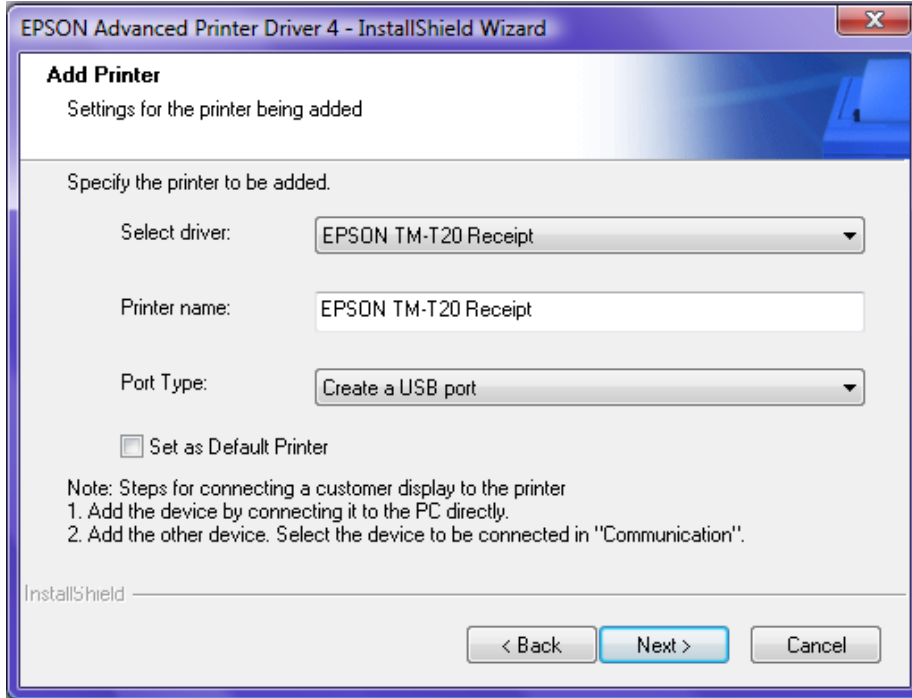
Step 7: Click Next.



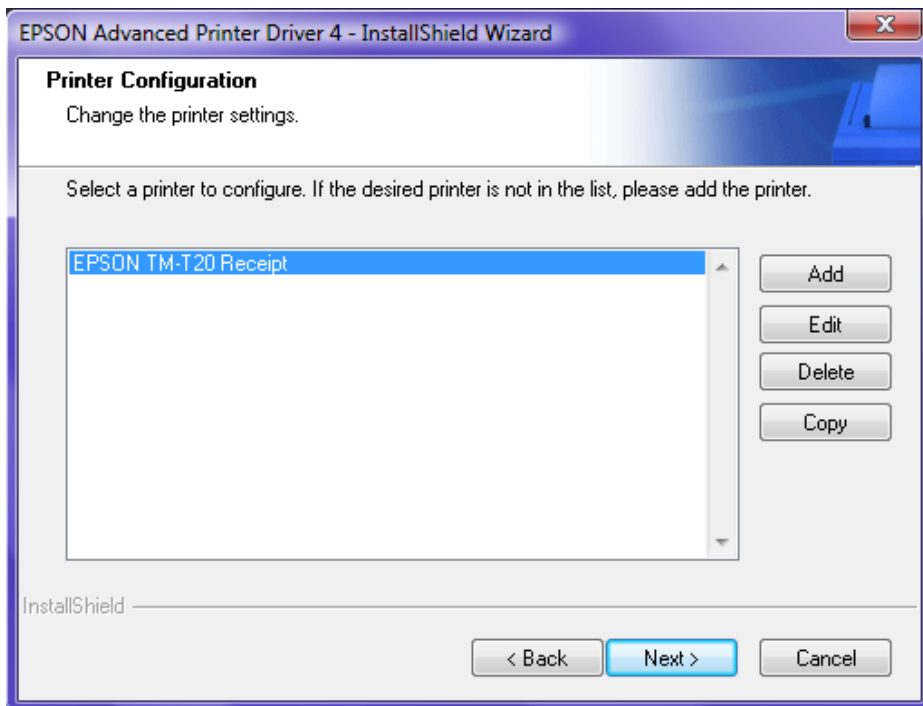
Step 8: Click Add.



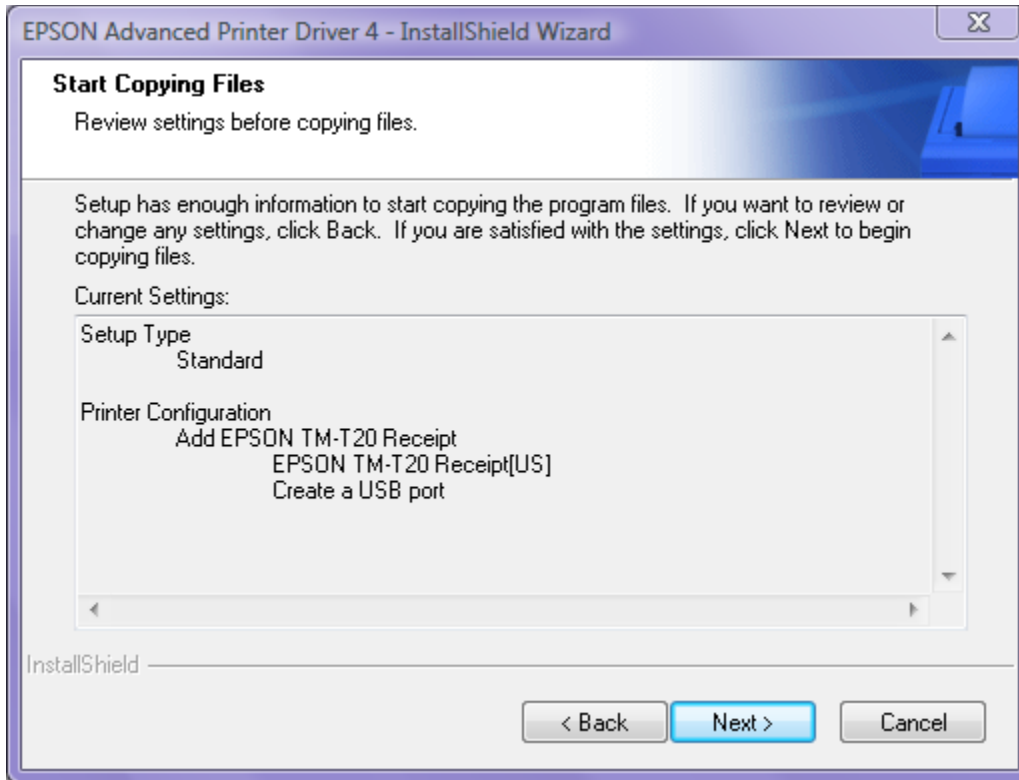
Step 9: Select **driver: EPSON TM-T20 RECEIPT**, and **Create a USB port**. Click **Next**.



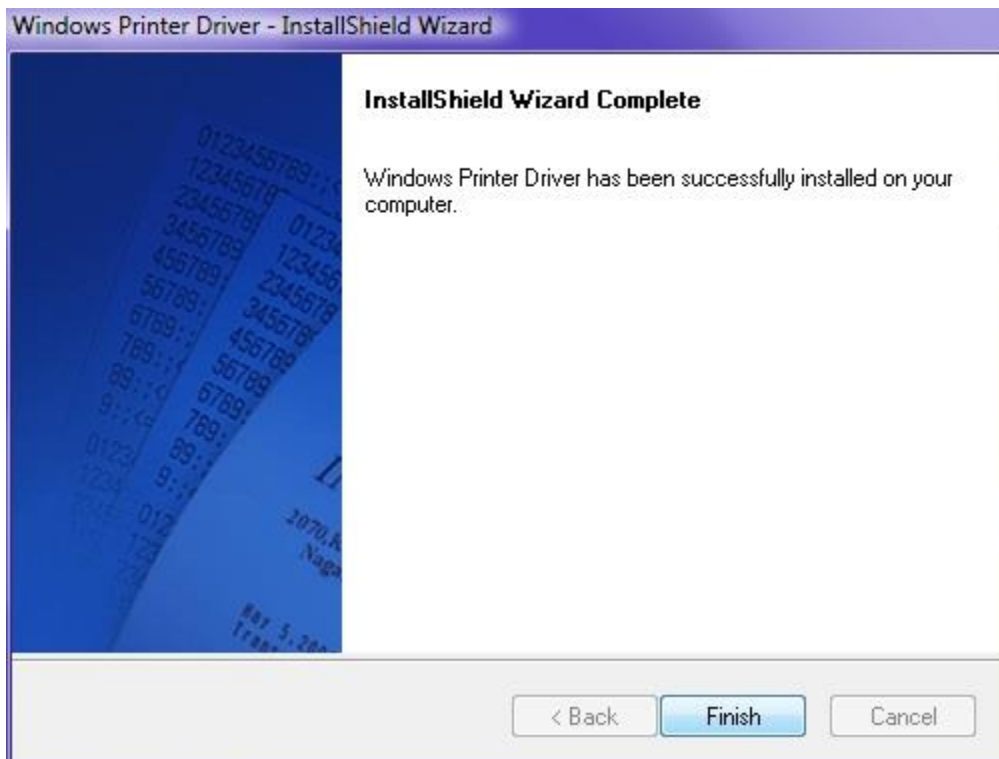
Step 10: Click **Next**.



Step 11: Click Next.

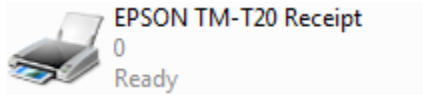


Step 12: Click Finish.

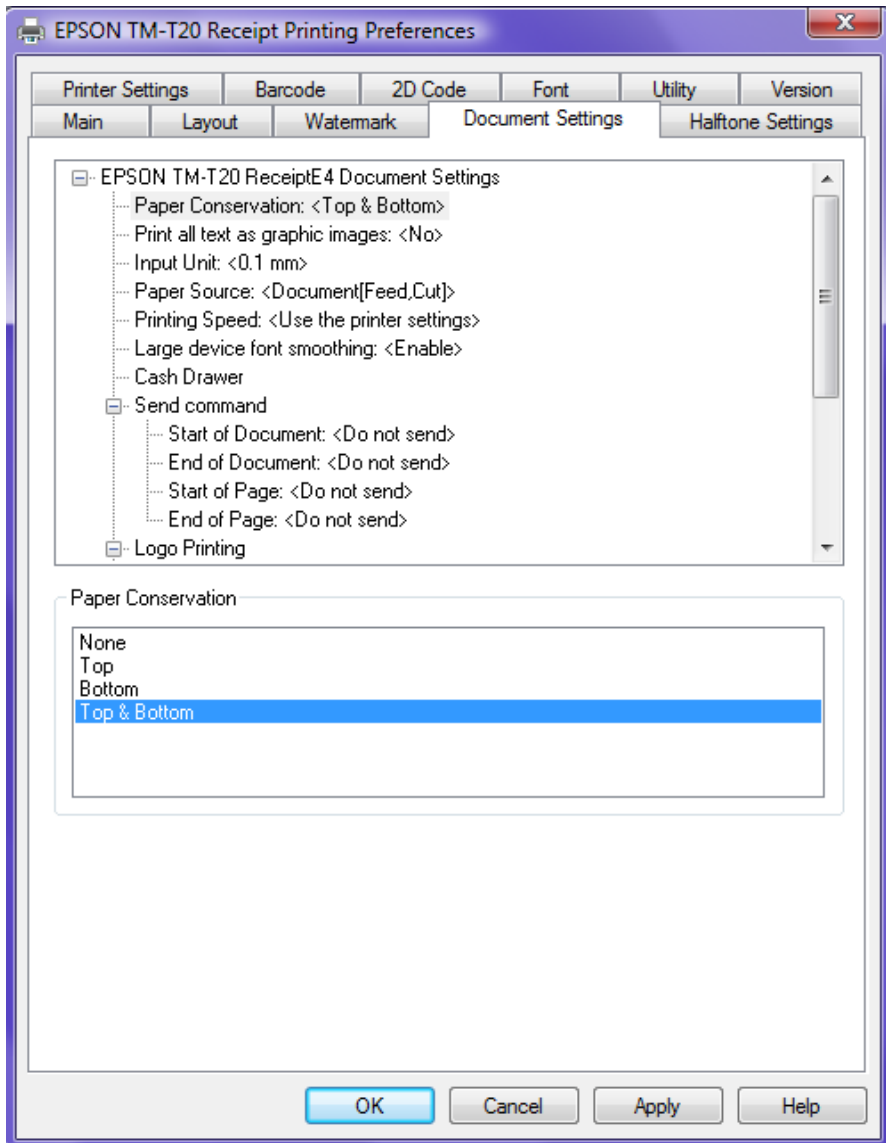


Setting up the Printer Driver

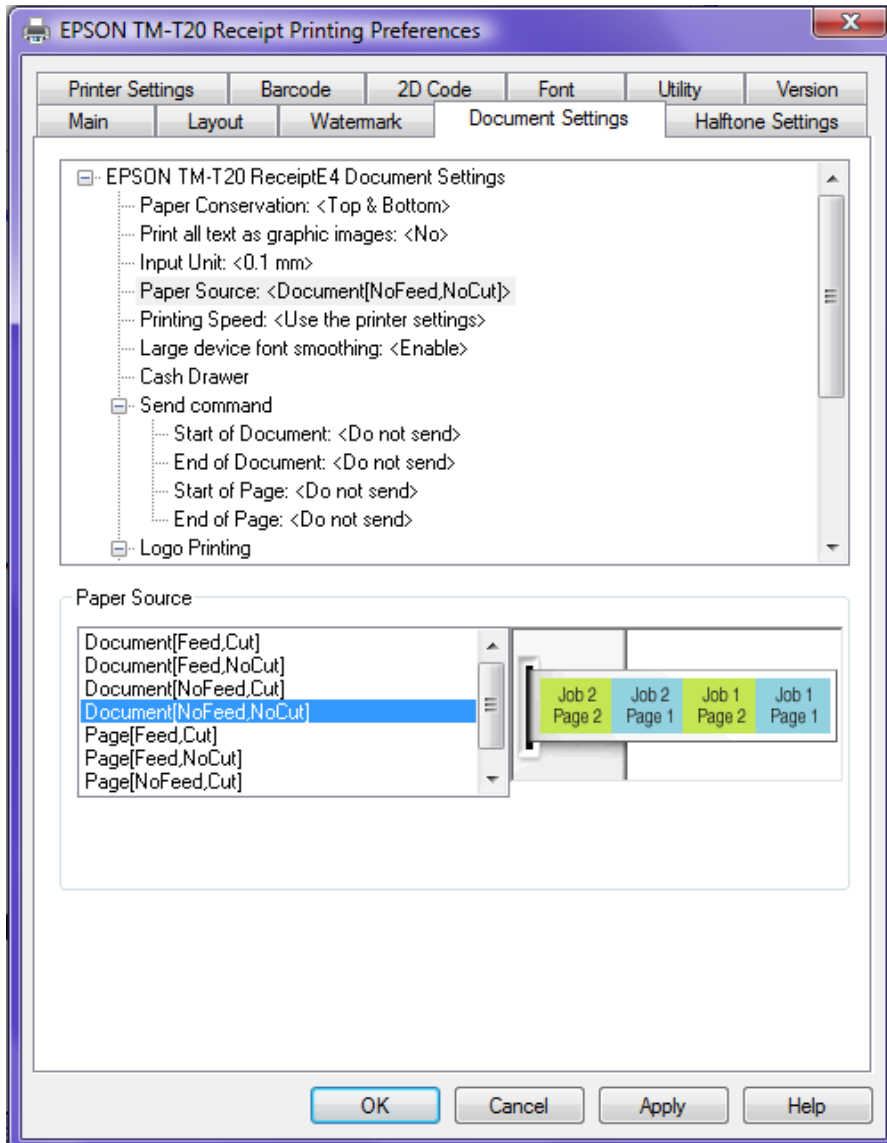
Go To Start > Control Panel > Printers and locate the **ST-EP4 Printer Icon**. **Right Click** it and select **Printer Preferences**.



Step 1: Go to the **Document Settings** Tab. Make sure **Paper Conservation** is **< Top & Bottom >**

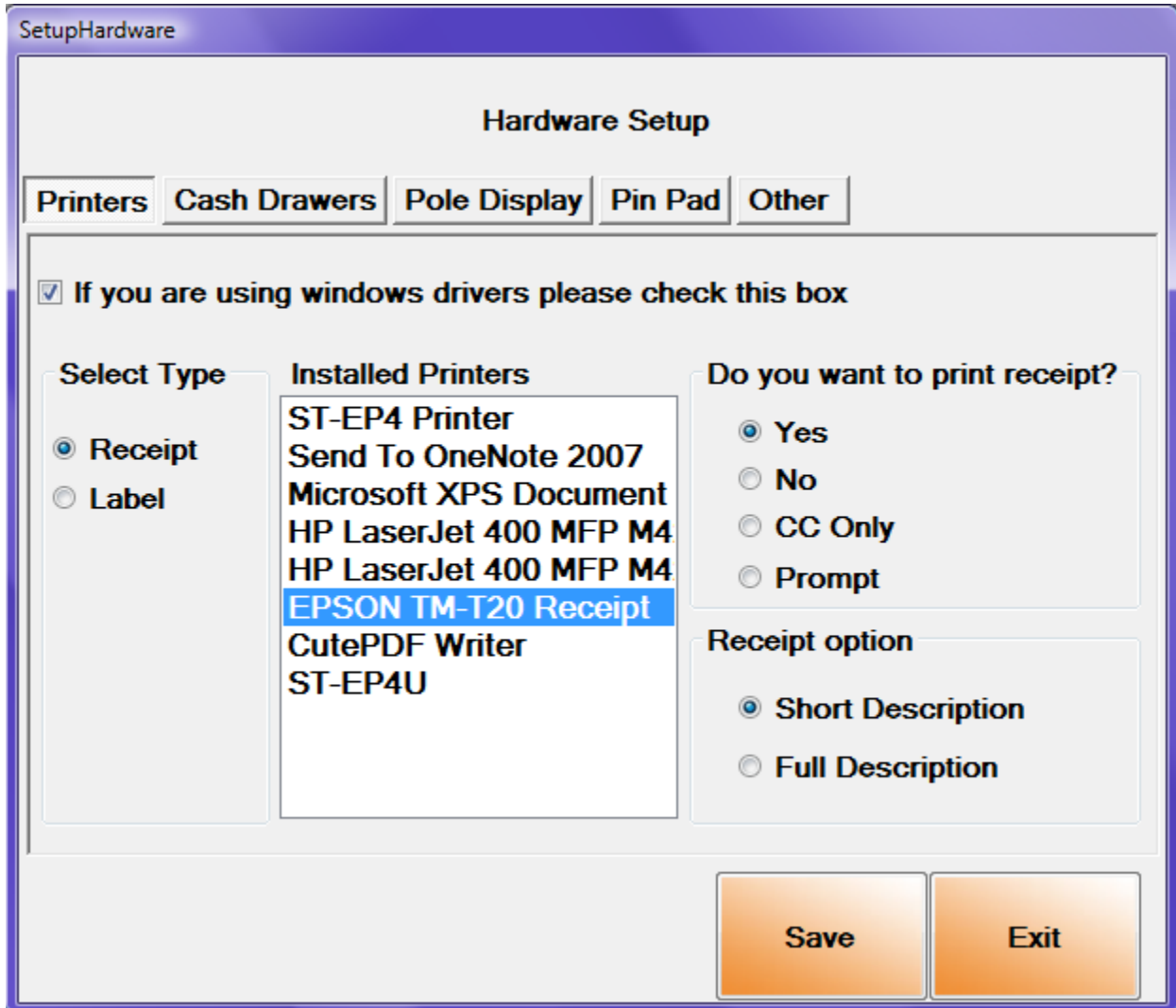


Step 2: Make sure Paper Source is < Document(NoFeed,NoCut)>



Setting the Printer up with CornerStore

Go to Setup > Hardware Setup. Then under the Printers Tab, check “If you are using windows drivers please check this box” and select the **ST-EP4 Printer**. Select your print receipt settings and click **Save**.



Your printer should now work with CornerStore!