

INTERNATIONAL POINT OF SALE

Logic Controls LV3000 Pole Display Installation Guide



This guide will go over in detail how to properly install the Logic Controls LV3000 pole display via USB connection.

Click below link to watch video - **How to assemble Logic Control LV3000 Pole Display**

http://www.youtube.com/watch?v=NJA71o9964s&feature=player_embedded#!

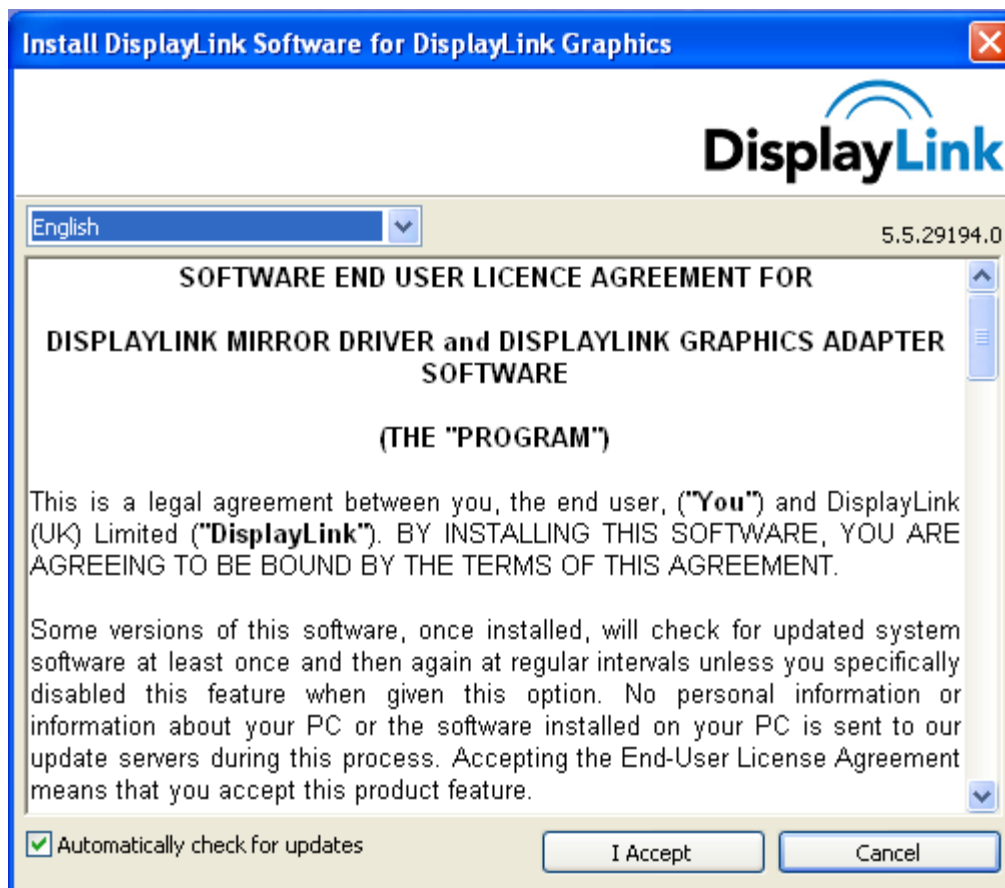
Note: Until prompted in the guide, keep the pole display unplugged

Step 1: **Download** the driver from here

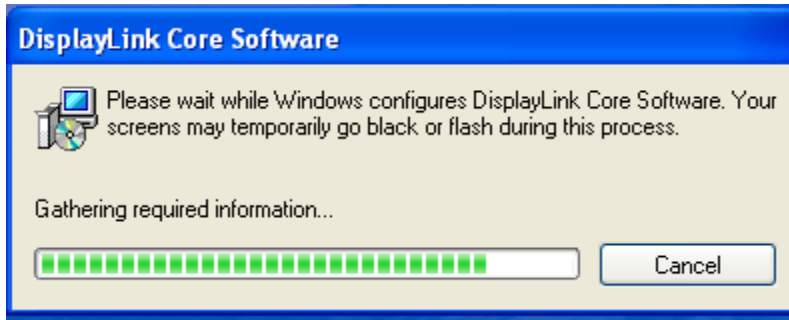
http://cornerstorepos.com/downloads/hardware/LV3000U_DisplayLink_6.3.exe

Step 2: **Click** and **Run** the Installer.

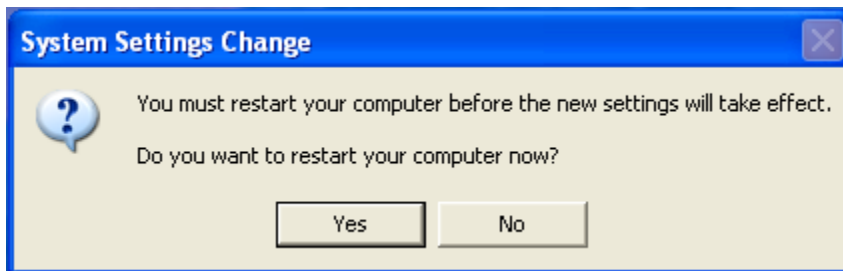
Step 3: Click **I Accept**.



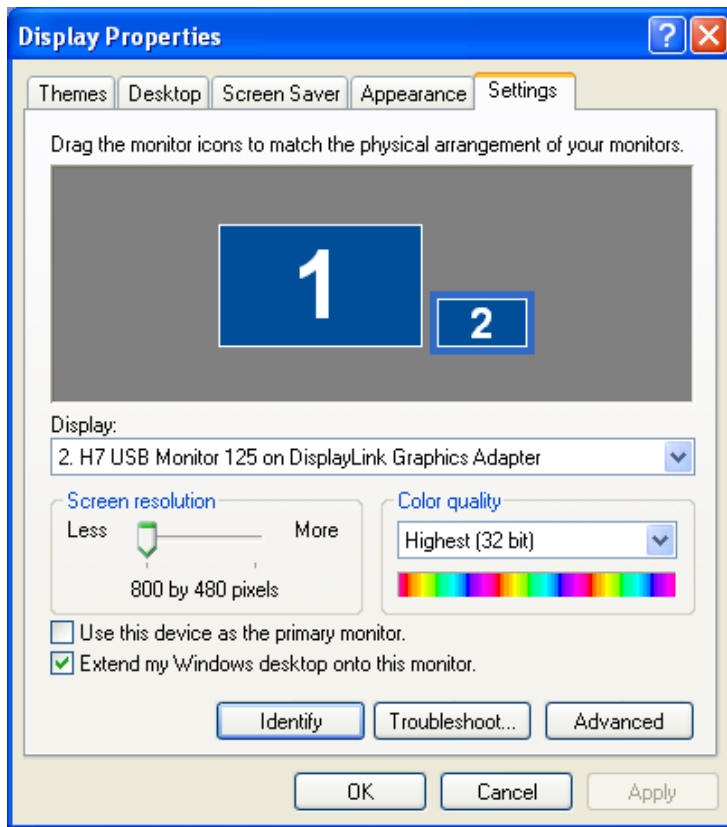
This window will appear during the installation; your monitor may temporarily go black or turn off. This is normal for the installation



Step 4: **Plug in the pole display**, a prompt will show up, click **Yes**.



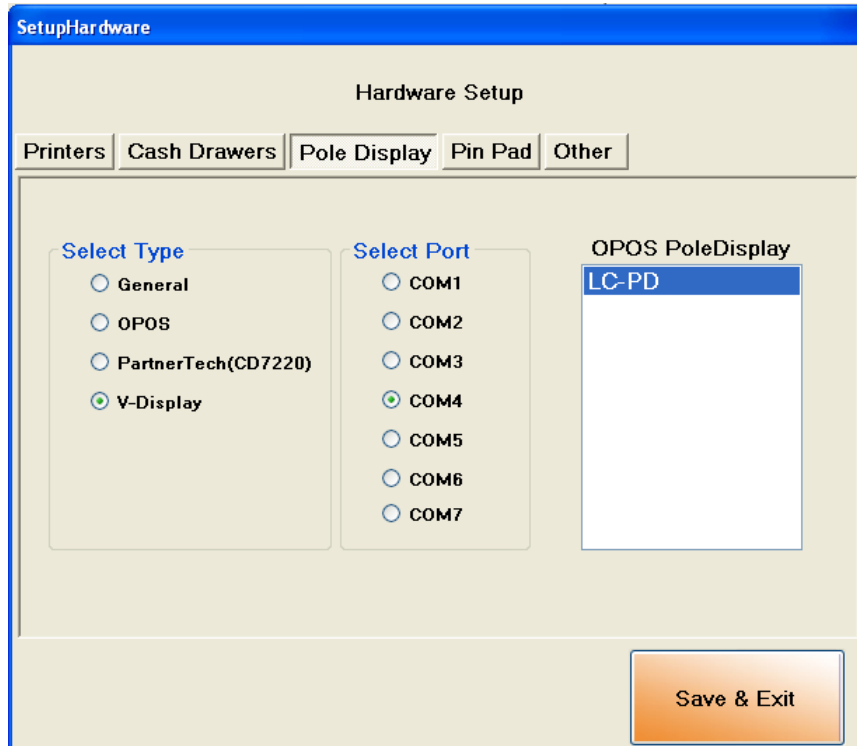
Step 5: **Right click** on your Desktop and click **Properties**, then go to the **Settings** Tab



For Windows VISTA or 7, right click on **Desktop** >> click on **Properties** >> click on **Display** and select **Change Display setting**.

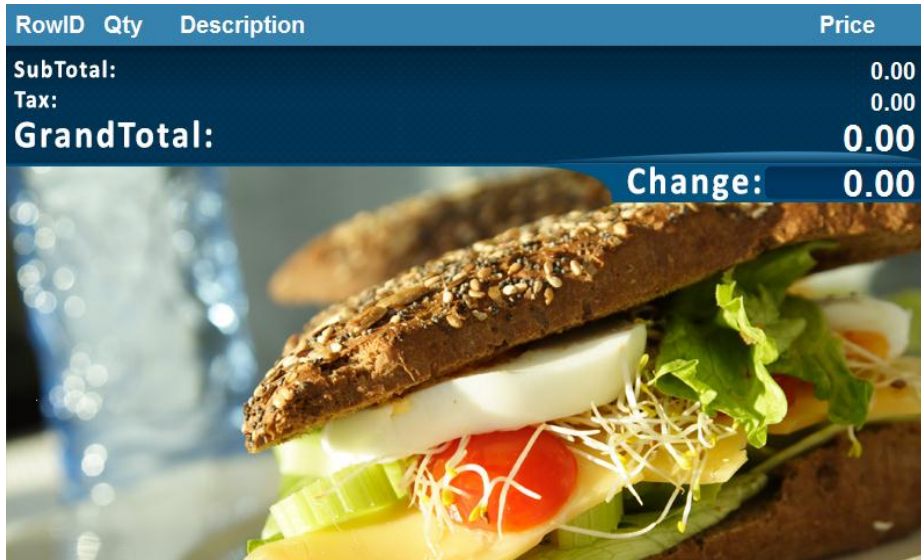
Step 6: **Click on the 2nd monitor** and check **Extend my Windows Desktop onto this monitor**, also check that the menu options are the same as the picture above.

Step 7: **Open** CornerStore and go to **Setup > Hardware Setup > Pole Display**



Step 8: For Select Type, select **V-Display**, then select the **LC-PD** for OPOS Pole Display. Click **Save and Exit**, and close CornerStore.

Step 9: Open up CornerStore again, the pole display should now be working.



Note: This does act as a second monitor so your mouse cursor CAN move to the customer display.