

INTERNATIONAL POINT OF SALE

POSX Pole Display Installation Guide



This guide will go over how to install the driver for the POSX Pole Display and set it up with CornerStore.

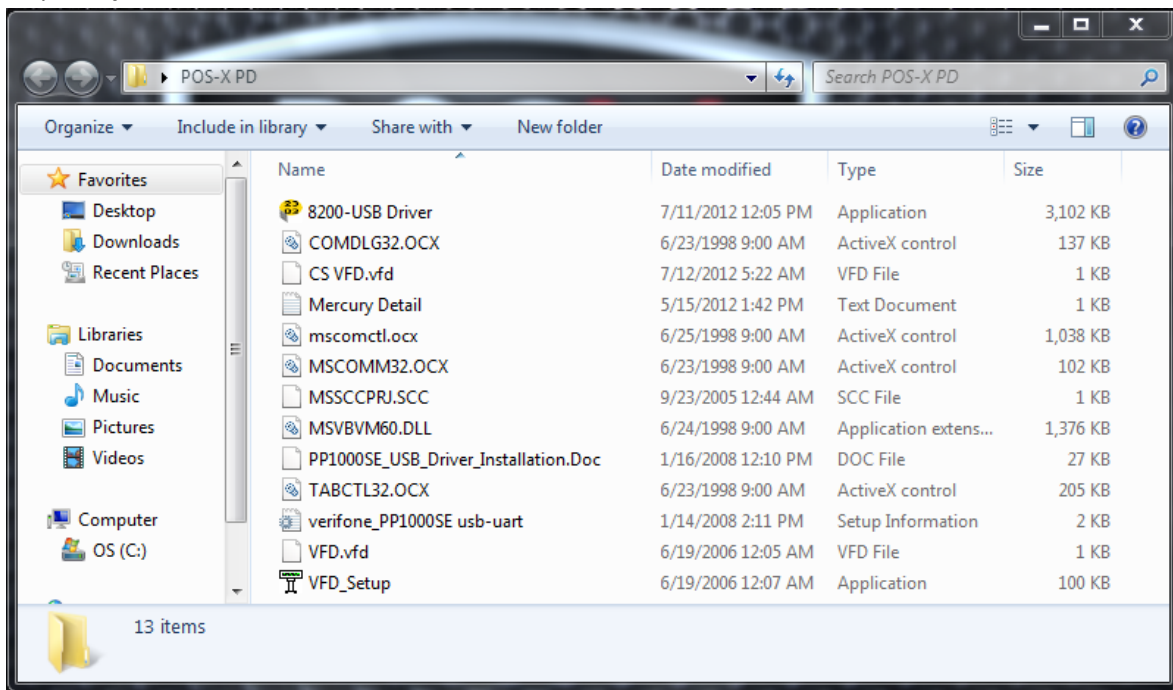
Make sure that POS for .NET is installed before attempting this installation.

Step 1: **Download** the file <http://cornerstorepos.com/downloads/hardware/POS-XP-8200.zip>

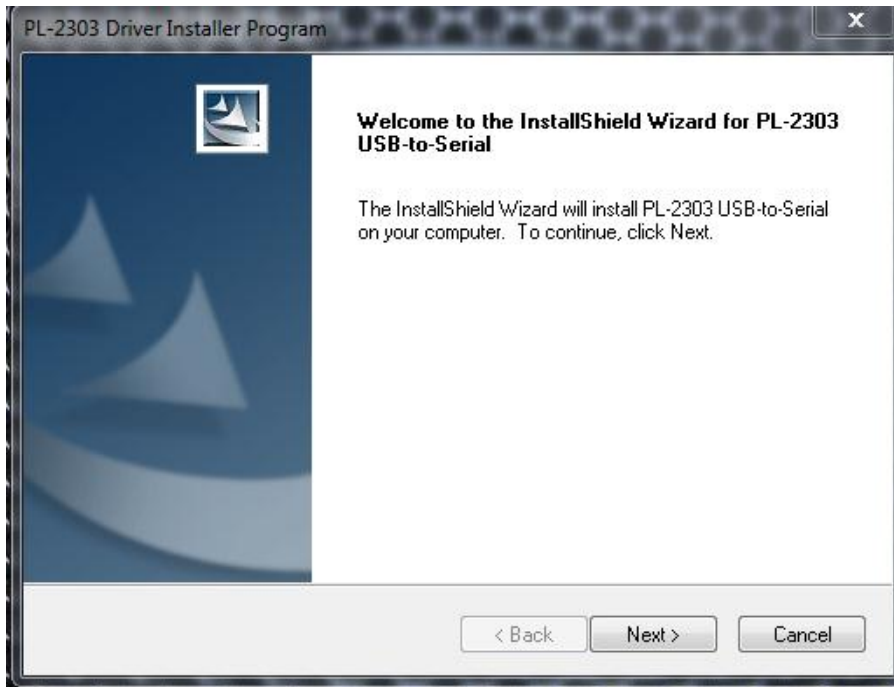
Right Click & Extract All, hit **next** for all prompts



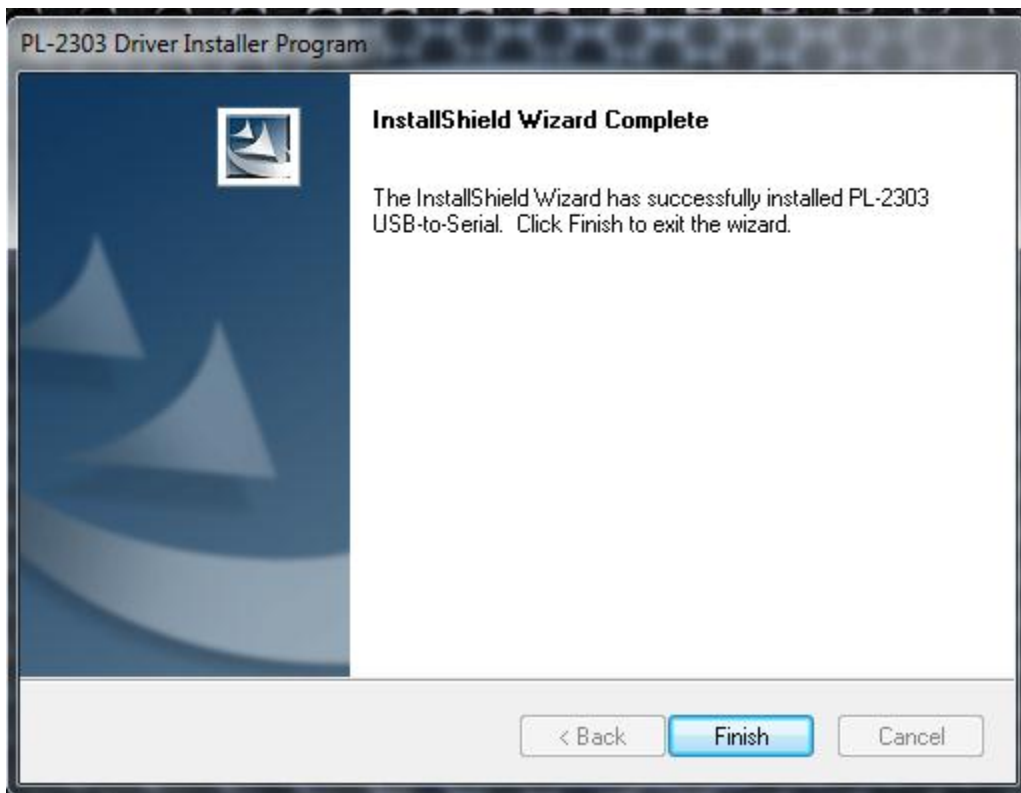
Step 2: **Open** the file and click on **8200-USB Driver**.



Step 3: Click **Next**

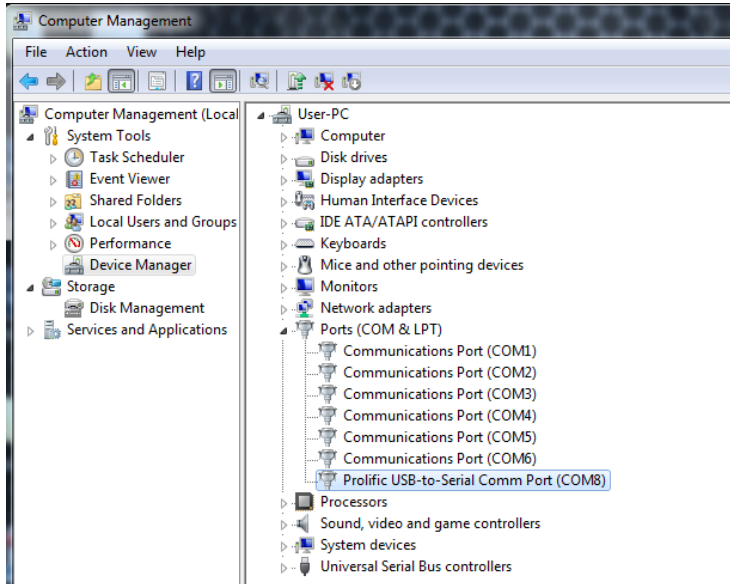


Step 4: Click **Finish**



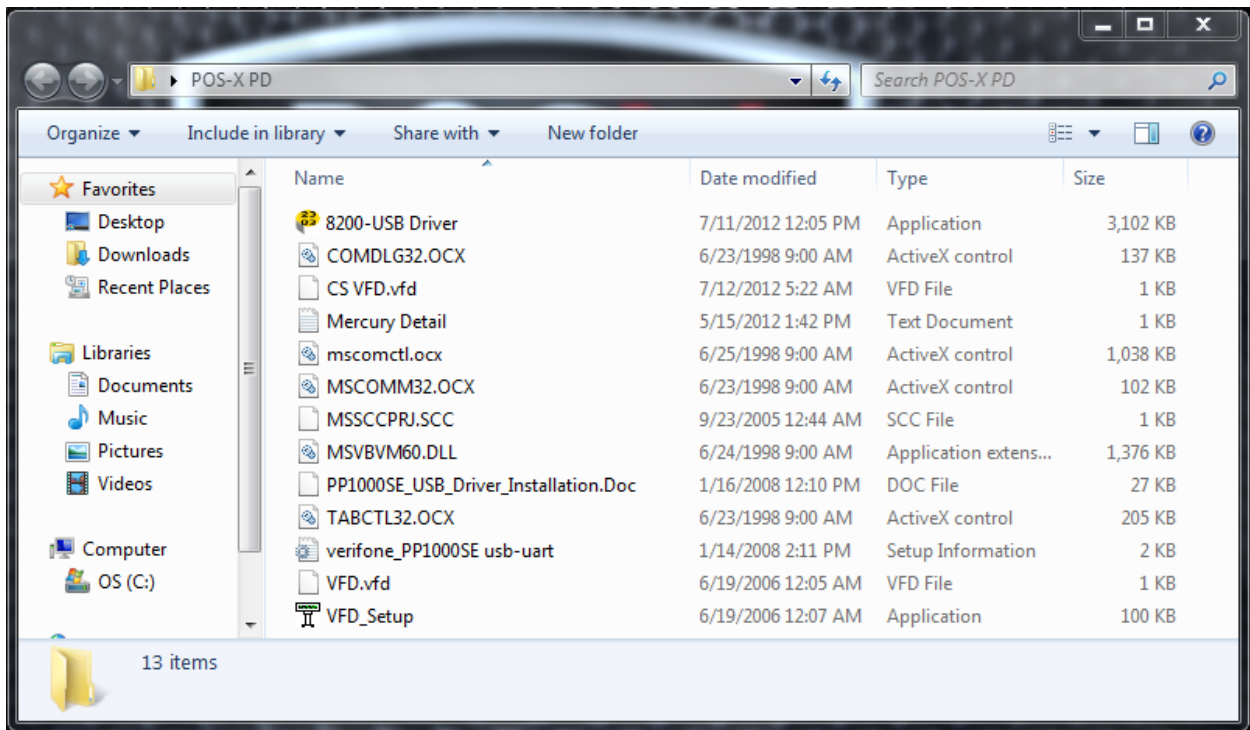
Step 5: Click On the **Windows Start Button**, then **right click My Computer**, and click **Manage**.

Step 6: Click on **Device Manager**, then click on **Ports**, look for **Prolific USB-To-Serial-Port** and notice the number next to the **COM**. **Take note of that number**.

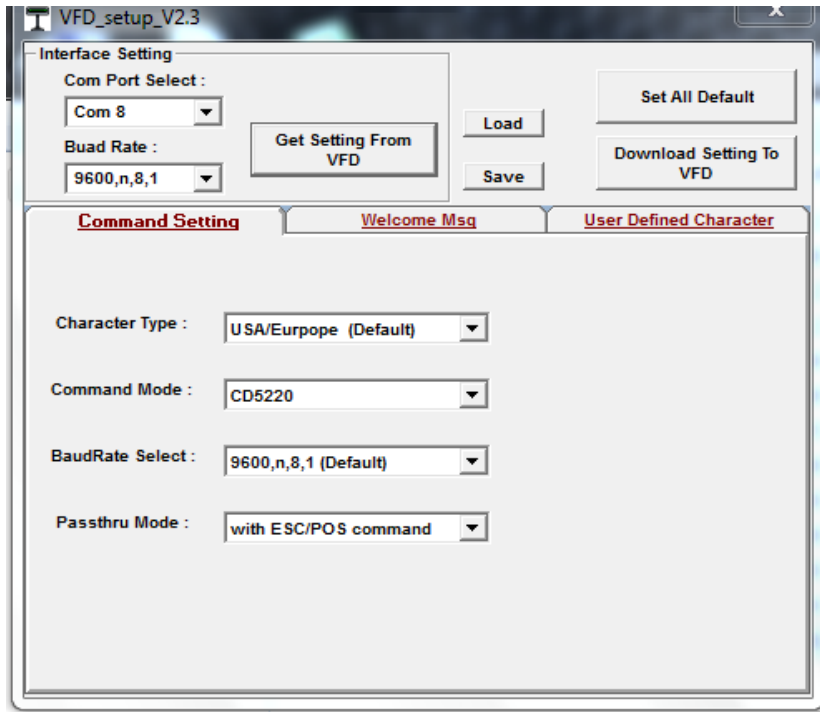


Step 7: **Download** the files from

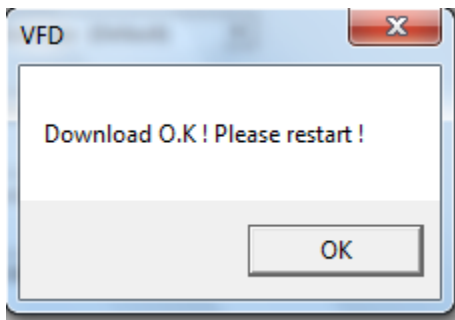
Open up the folder **POS-X PD** and click on **VFD Setup**.



Step 8: Under **Com Port Select**, choose the **COM port** that you noted earlier. Under **Command Mode** choose **CD5220**. Under **Passthru Mode**, choose **with ESC/POS command**.

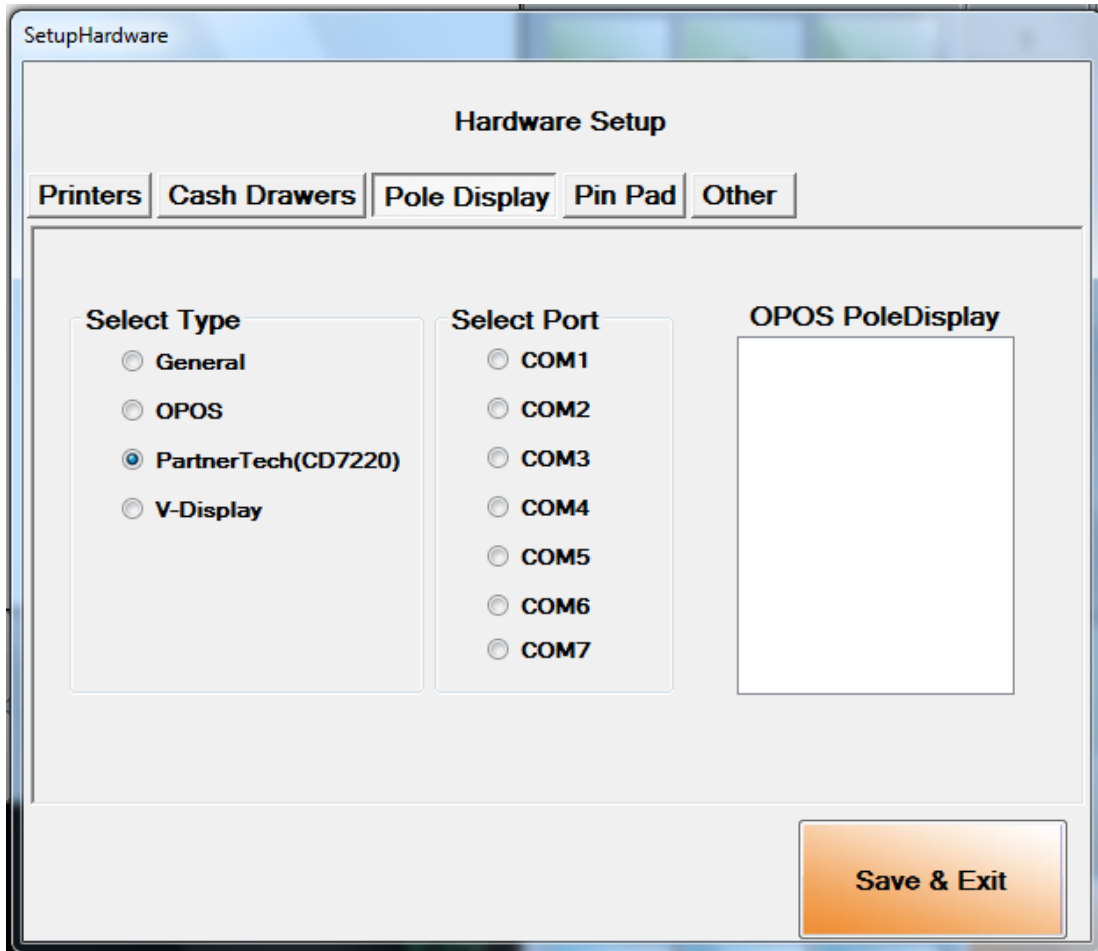


Step 9: Once that is all done press **download setting to VFD**. **Turn off and turn on the pole display**. Click **OK**.



Step 10: Open up **CornerStore** and go to **Setup-> Hardware Maintenance** and select **Pole Display**

Step 11: Check **PartnerTech (CD7220)** and select the **COM port** that you noted earlier.



You have now installed the drivers for the Pole and set it up with Corner Store. You are now ready to use the POS-X Pole Display.