

## **Installation instructions for the PARTNER TECH PT 6215 Hardware with Corner Store POS**



Corner Store POS supports PARTNER TECH PT 6215 hardware. This document will detail the process of installing the correct drivers for the printer, cash drawer, pole display and card reader and then setting up in Corner Store POS. The pole display requires no drivers.

## Installing Appropriate Drivers For Printer

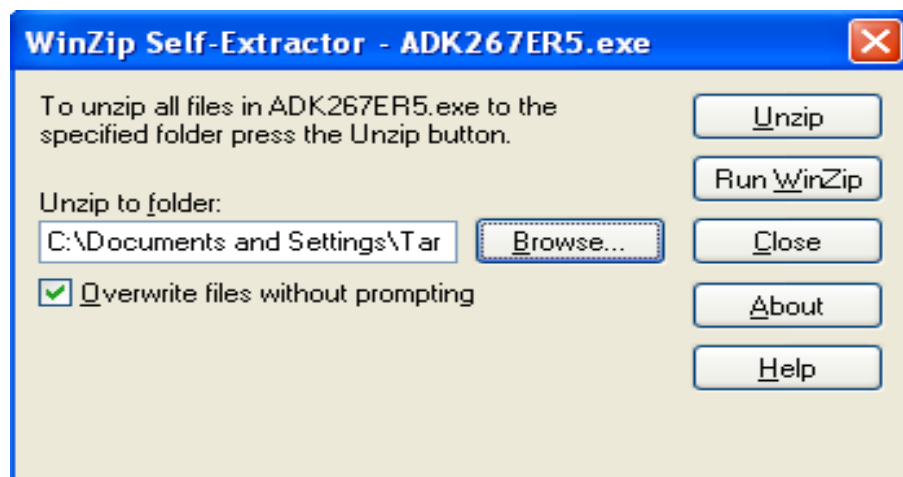
1. Start by running the setup.exe installer file, which can be downloaded at:

[http://cornerstorepos.com/downloads/hardware/Printer\\_V262forBAT500II.zip](http://cornerstorepos.com/downloads/hardware/Printer_V262forBAT500II.zip)

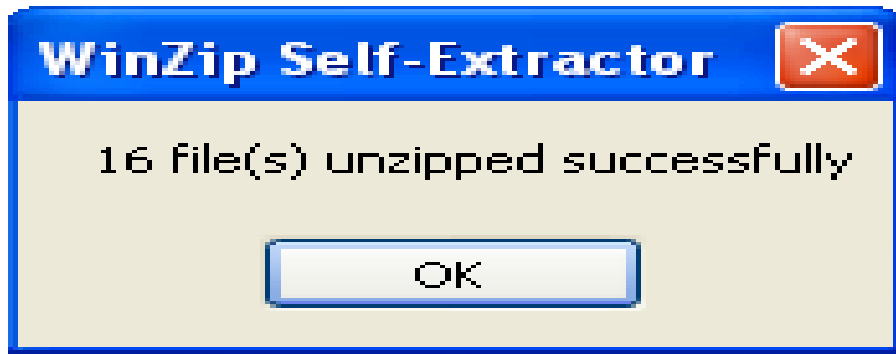
2. At this initial screen, select Run.



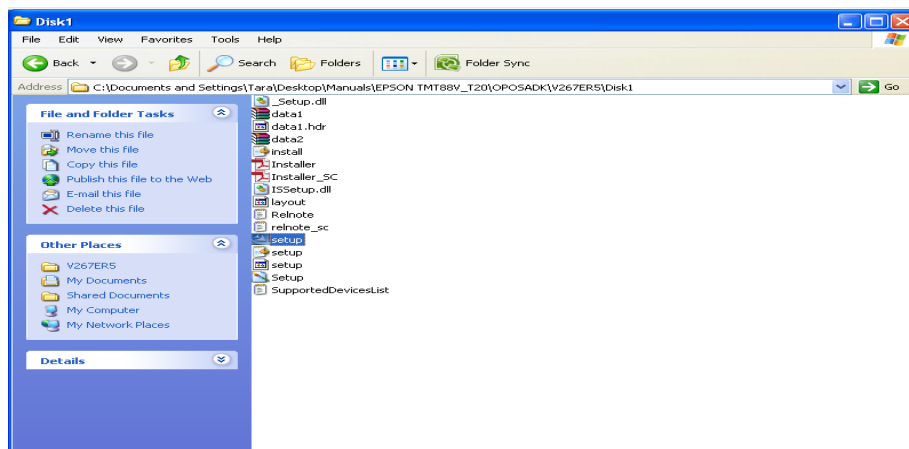
3. Now, the file has to be unzipped. Please select any folder to download the file, and then click on Unzip.



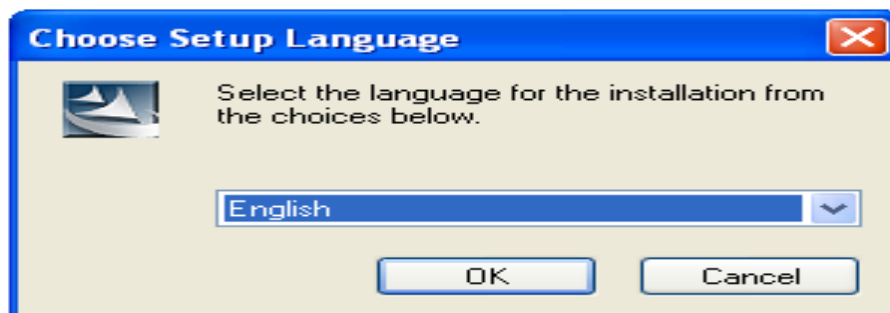
4. Once the file is unzipped, now click on OK.



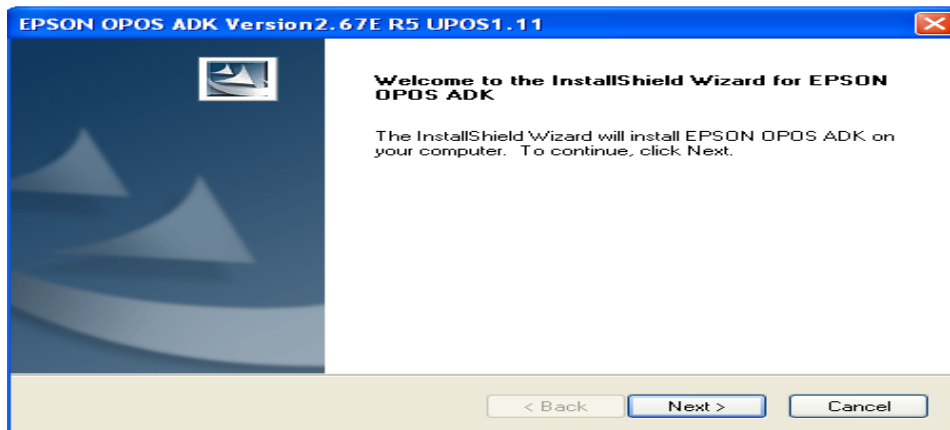
5. Now go to the folder where the file has been unzipped. And look for the setup.exe file and execute it by clicking on it.



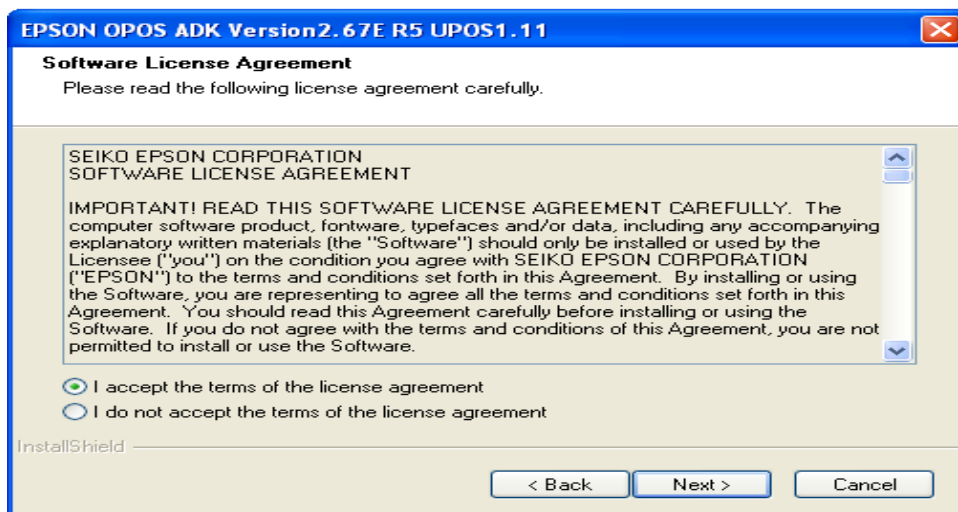
6. Next, click on OK.



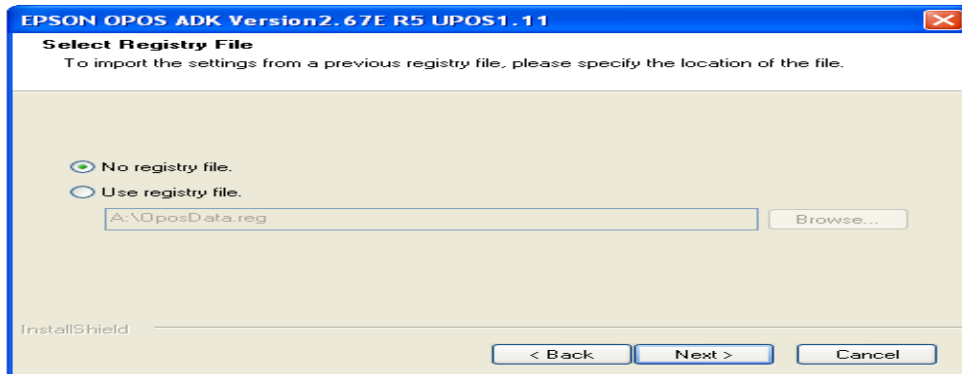
7. Now click on Next.



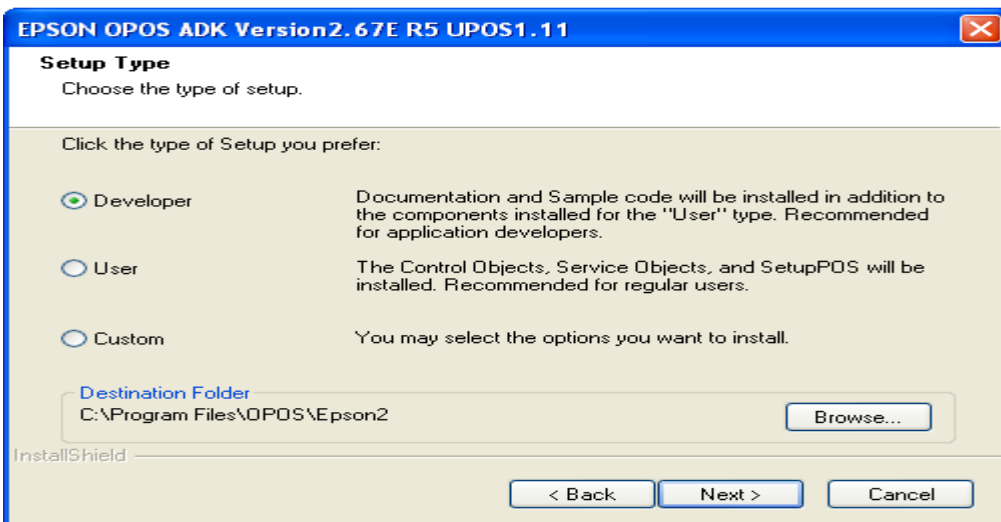
8. Select the option, 'I accept the terms of the license agreement', and then click on Next.



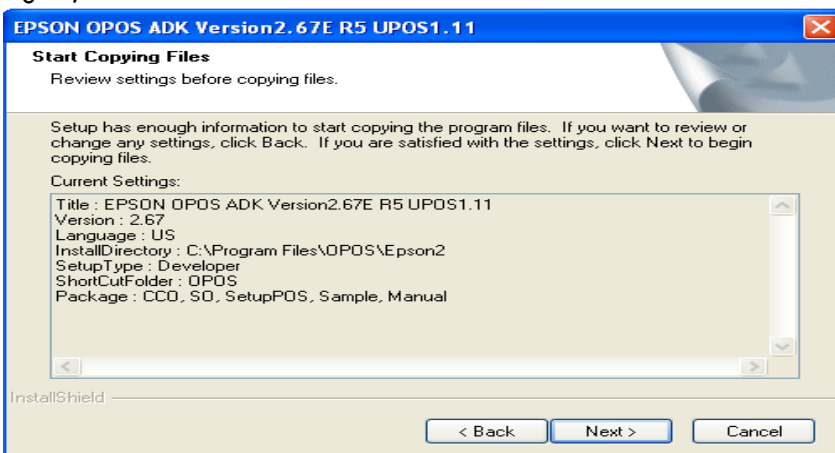
9. Now, click on Next.



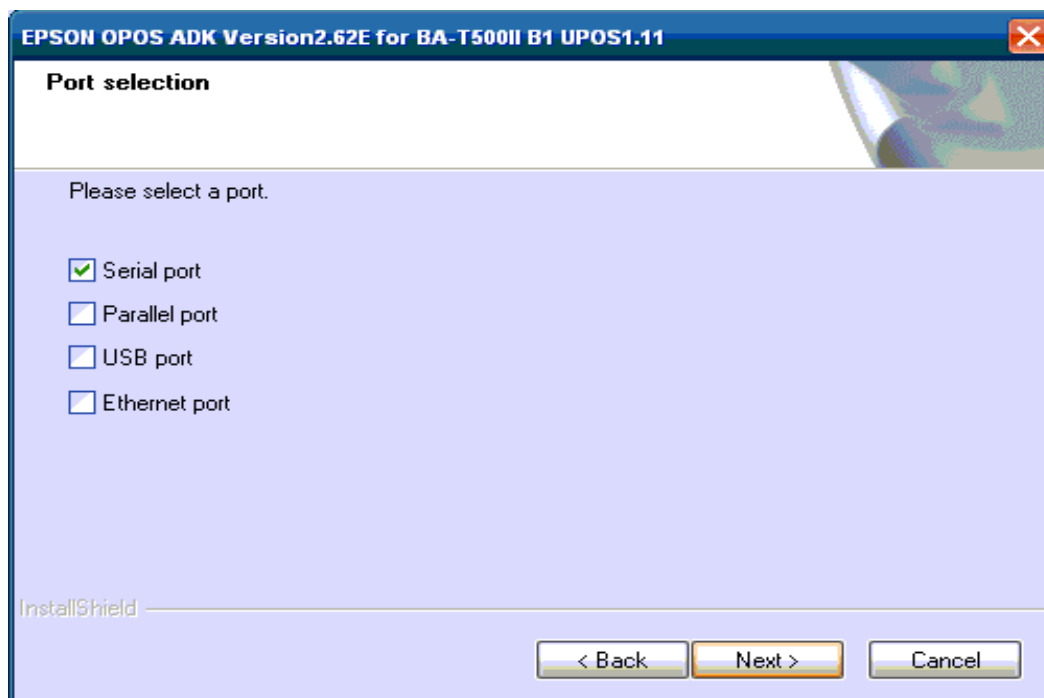
10. Select Next.



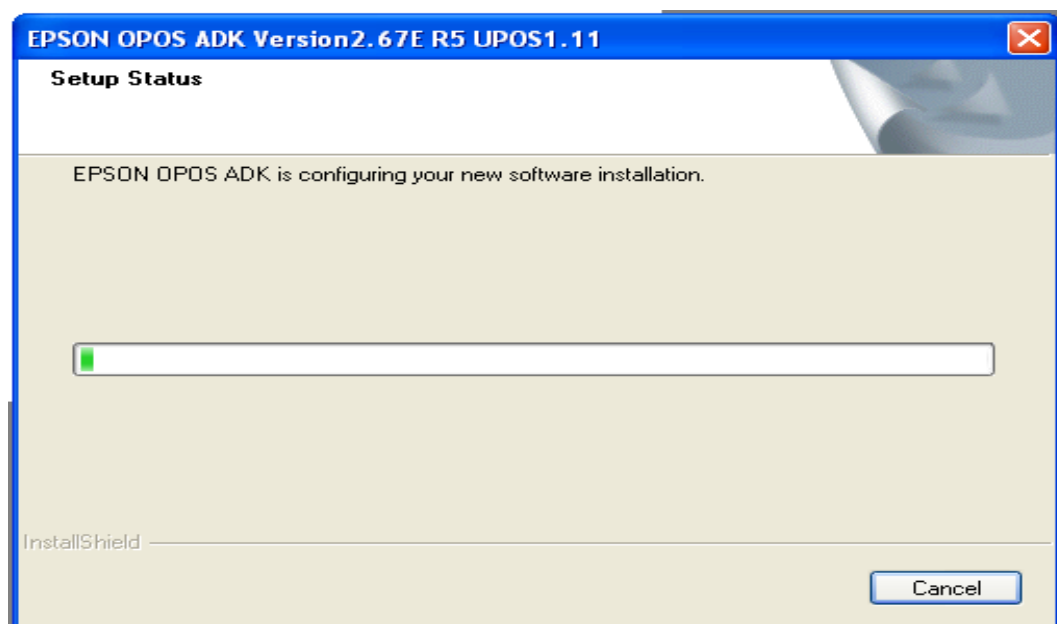
11. Again, select Next.



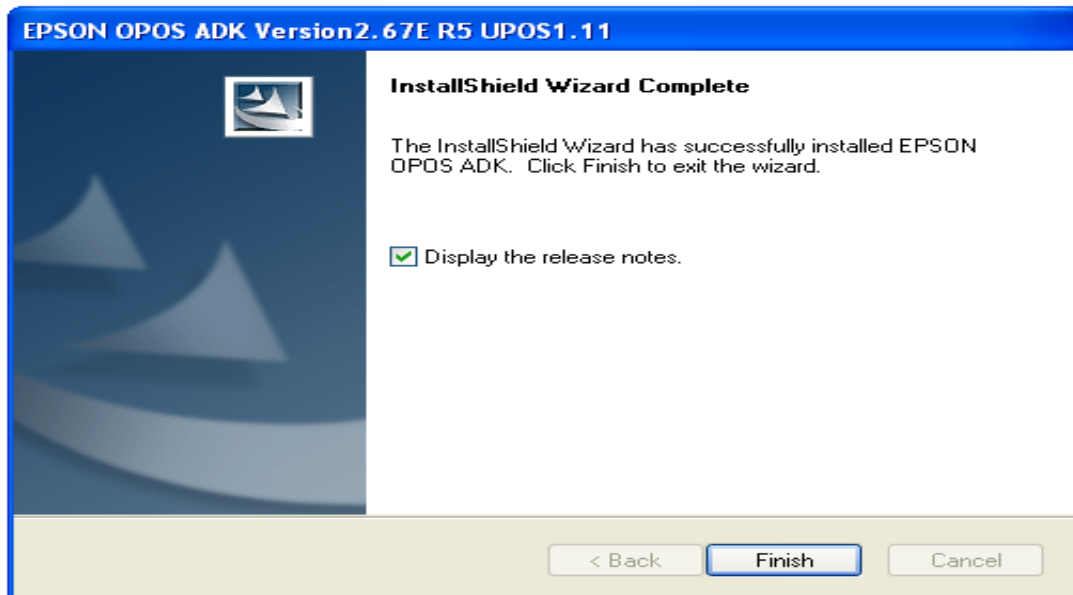
12. Select USB port and then click on Next.



13. Setup is configuring and installing the software.

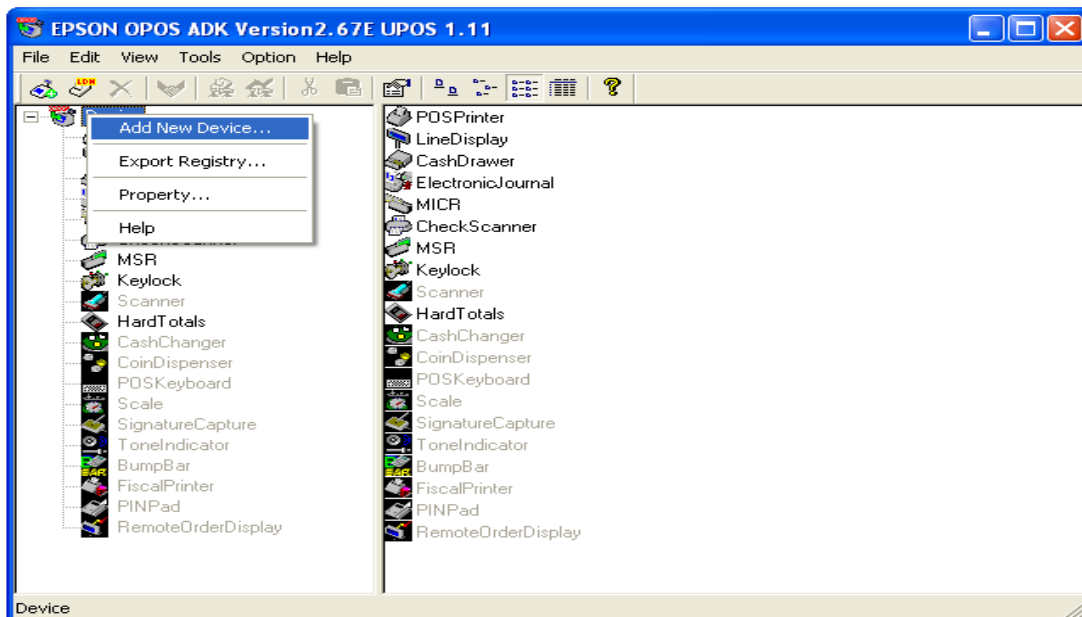


14. The installation is complete. Click on Finish.



15. Now, EPSON OPOS Utility window opens.

16. Now, right click on the POS Printer and select Add New Device.



17. A new window, Add New Device opens. Now, select from Select Device Name, the desired printer; BA-T500IIM and then click on Next.

**Add New Device [Select DeviceNameKey]**

Add New Device

Select Device Name: BA-T500IIM

Select detailed model: BA-T500IIM

☐ Display Ver1.xx ☒ Display Ver2.xx

Device Description: EPSON BA-T500IIM POS Printer

INF File Name: C:\PROGRAM~1\OPOS\Epson2\PpT500IIM.inf

Used Port: COM

Add New LDN

Set up a logical device name if necessary.

\* A logical device name isn't indispensable.  
A logical device name isn't set up in the case as the blank.  
And, a logical device name can be set up even later.

< Back Next > Cancel Help

18. Set COM port to COM5 and Baud Rate to 115200.

**Add New Device [Communication Settings]**

COM Port Settings

COM5

Port is being used by: (None)

Setup of details of the port.

BaudRate: 115200 bps

BitLength: 8 bit

Parity: NONE

StopBit: 1 bit

Handshake: DTR/DSR

InputBuf

OutputBuf: 1024

Output Interval Time: 2500 msec

Input SleepTime

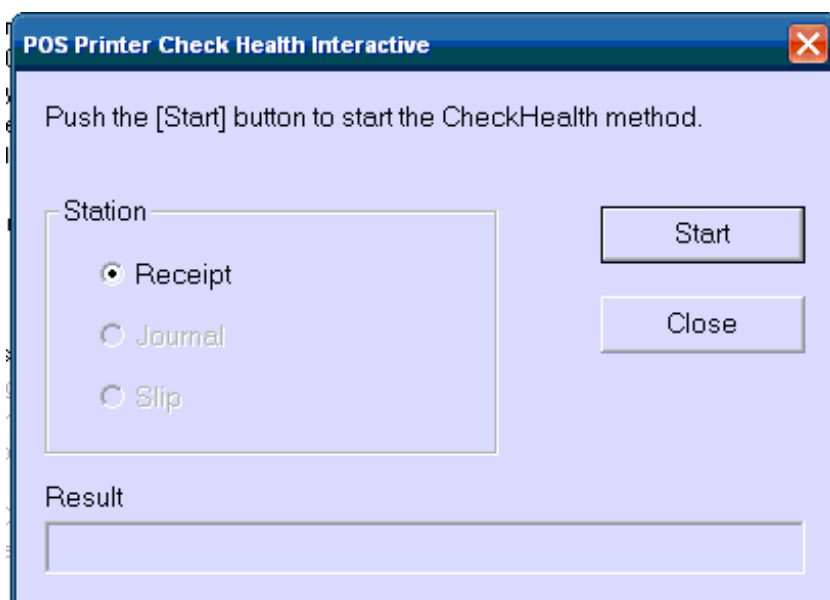
CheckHealth Interactive

Device Specific Settings

< Back Finish Cancel Help

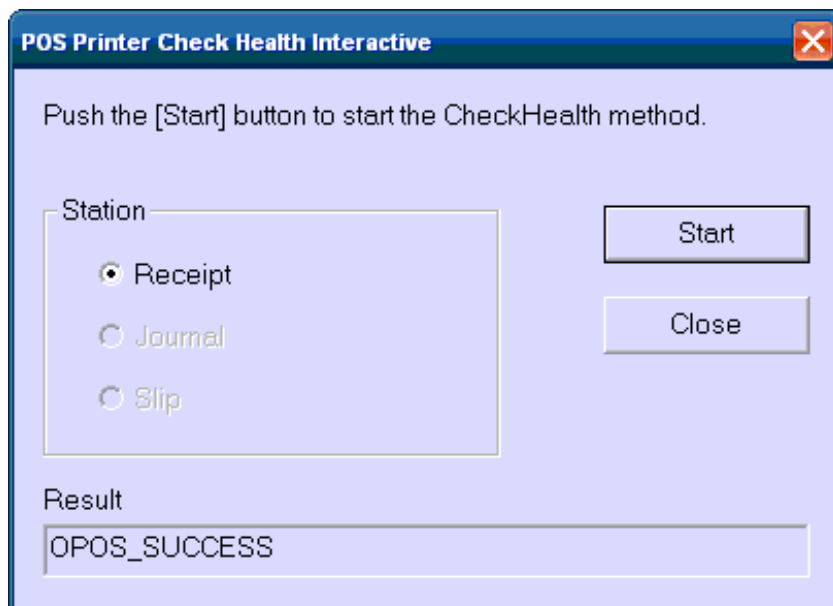


19. Click on the Check Health Interactive to check if the printer is working. Click on Start button. Printer must work.



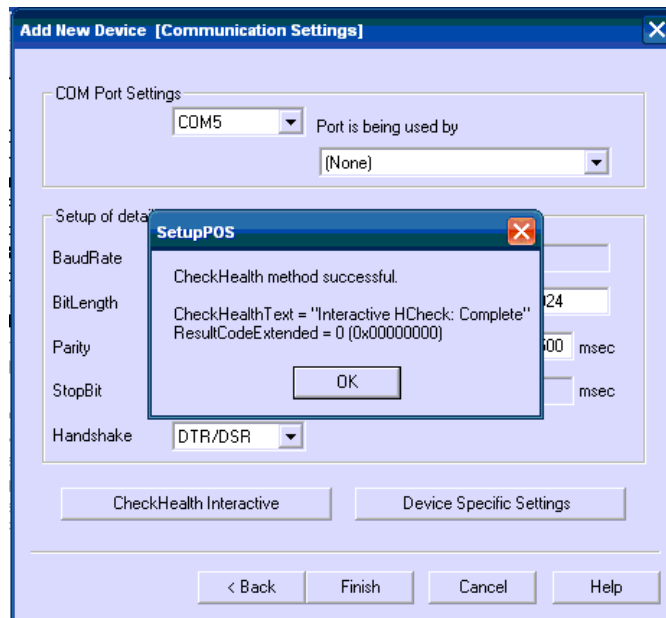
The screenshot shows a dialog box titled "POS Printer Check Health Interactive". It contains the instruction "Push the [Start] button to start the CheckHealth method." Below this, there is a "Station" section with three radio button options: "Receipt" (which is selected), "Journal", and "Slip". To the right of these options are two buttons: "Start" and "Close". At the bottom, there is a "Result" label followed by an empty text input field.

20. Once this done, you get a message in the Result as OPOS\_SUCCESS. Now, click on Close button.

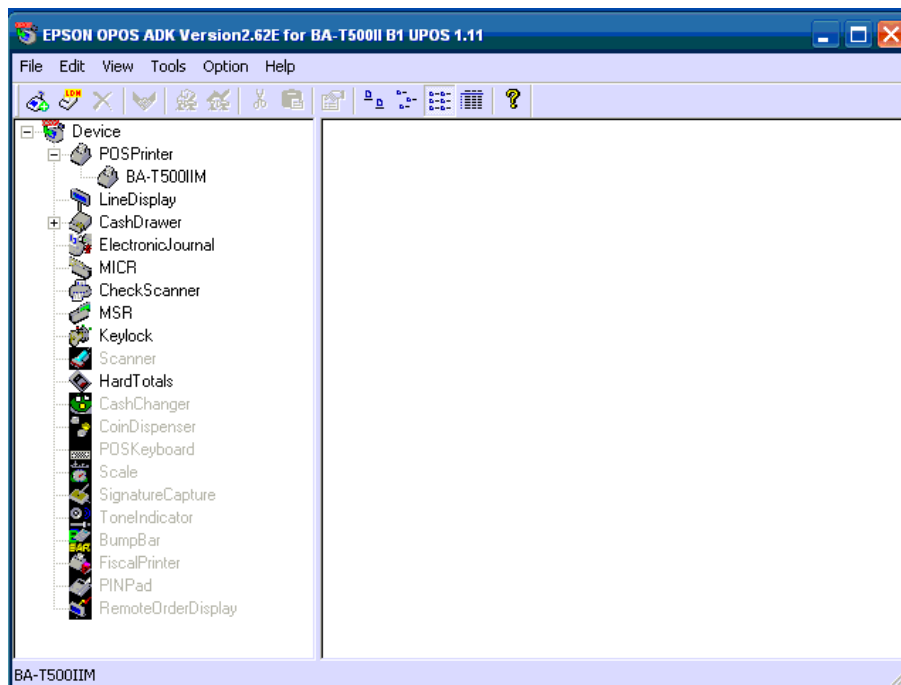


This screenshot shows the same dialog box as before, but the "Result" text field now contains the text "OPOS\_SUCCESS". The "Start" and "Close" buttons are still present, and the "Receipt" option remains selected under the "Station" section.

21. Message is shown that CheckHealth was successful. Now, click on OK.



22. Click on Finish. Now, note that BA-T500IIM is configured.

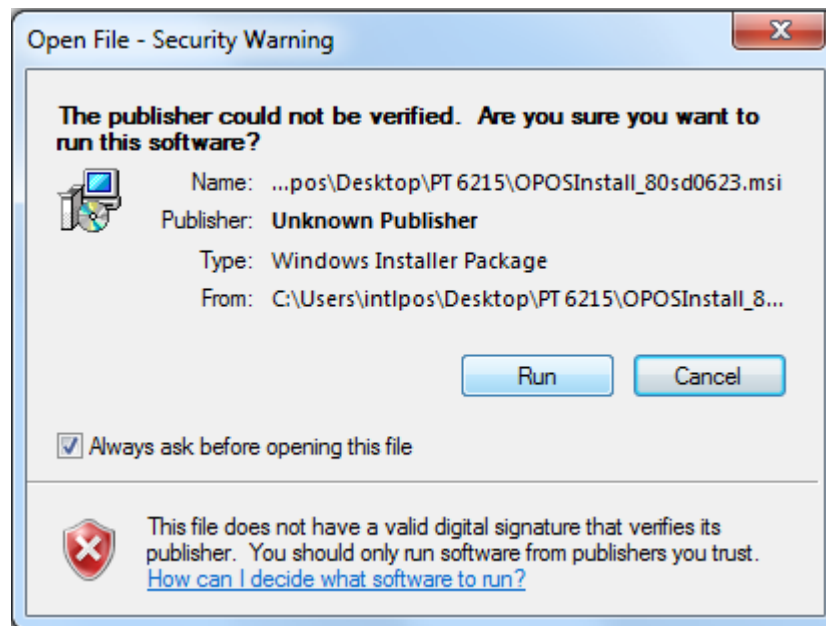


## Installing Appropriate Drivers For Cash Drawer

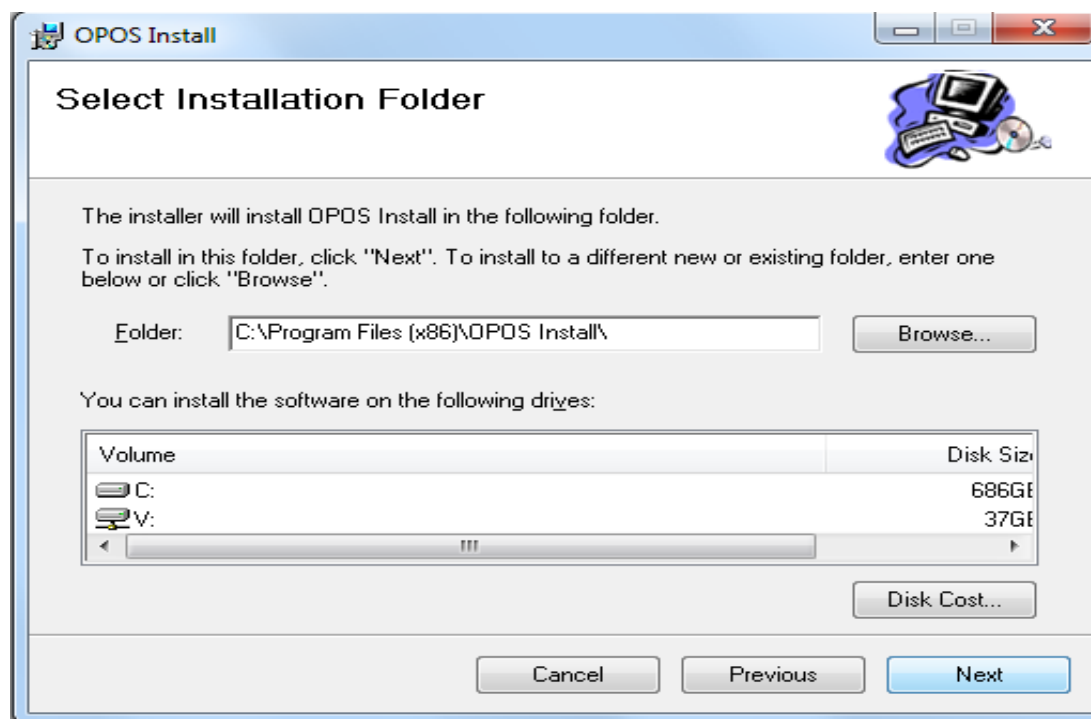
1. Start by downloading file, which can be downloaded at

[www.cornerstorepos.com/downloads/hardware/CashDrawer\\_OPOSInstall\\_80sd0623.msi](http://www.cornerstorepos.com/downloads/hardware/CashDrawer_OPOSInstall_80sd0623.msi)

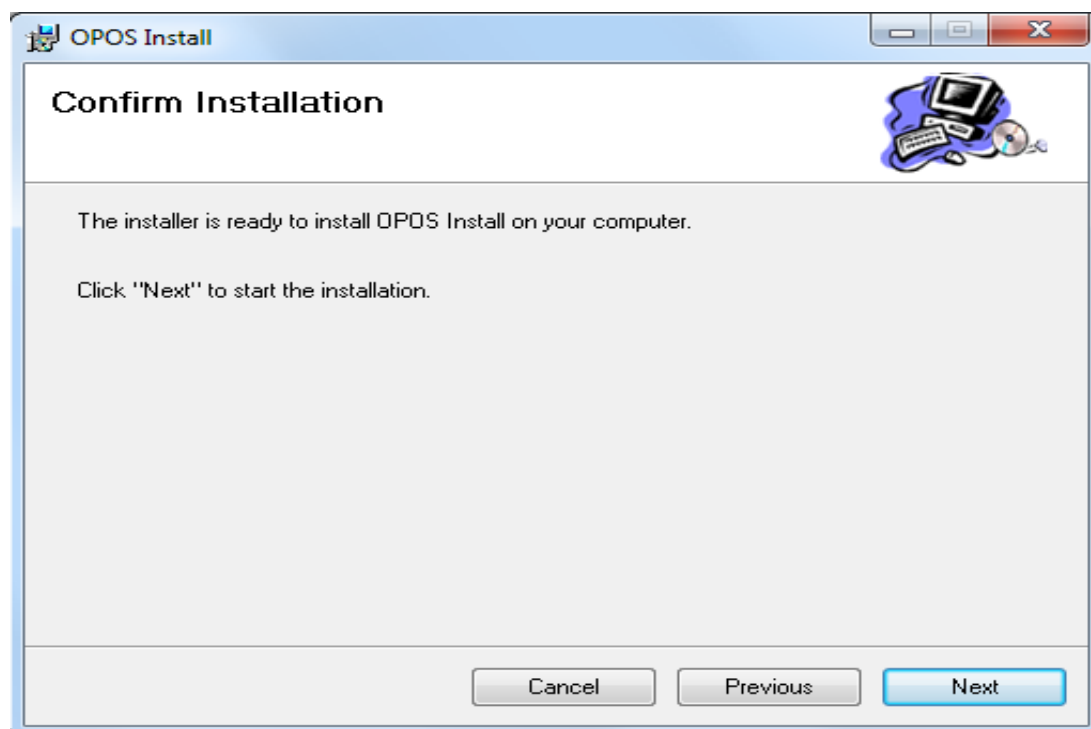
2. Start downloading by clicking on Run



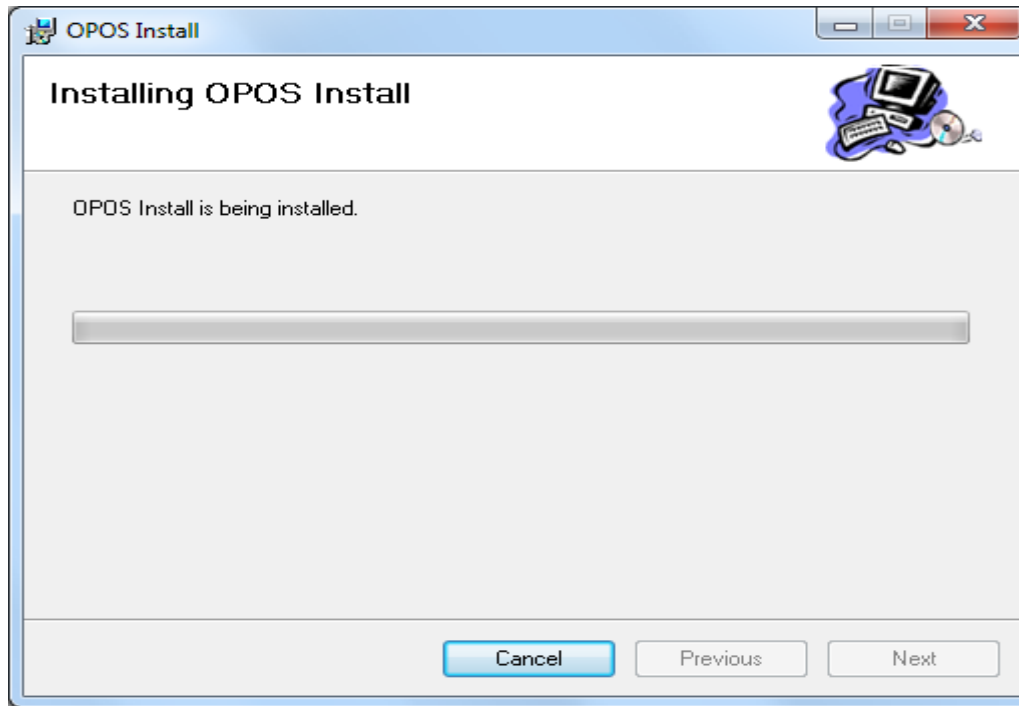
3. Click Next



4. Click Next

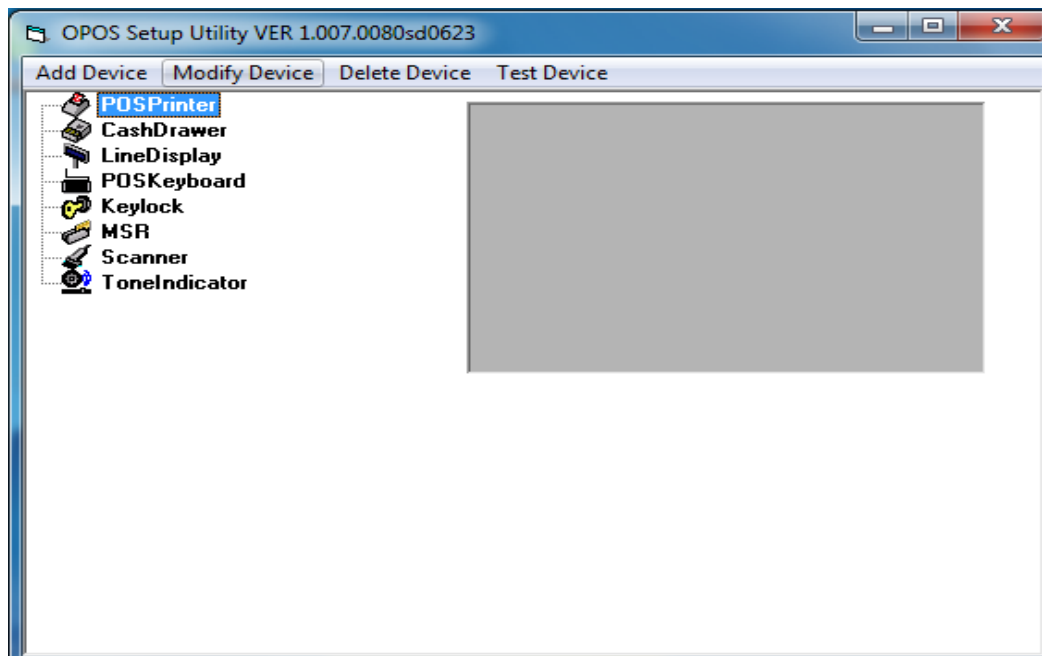


5. OPOS installation is being

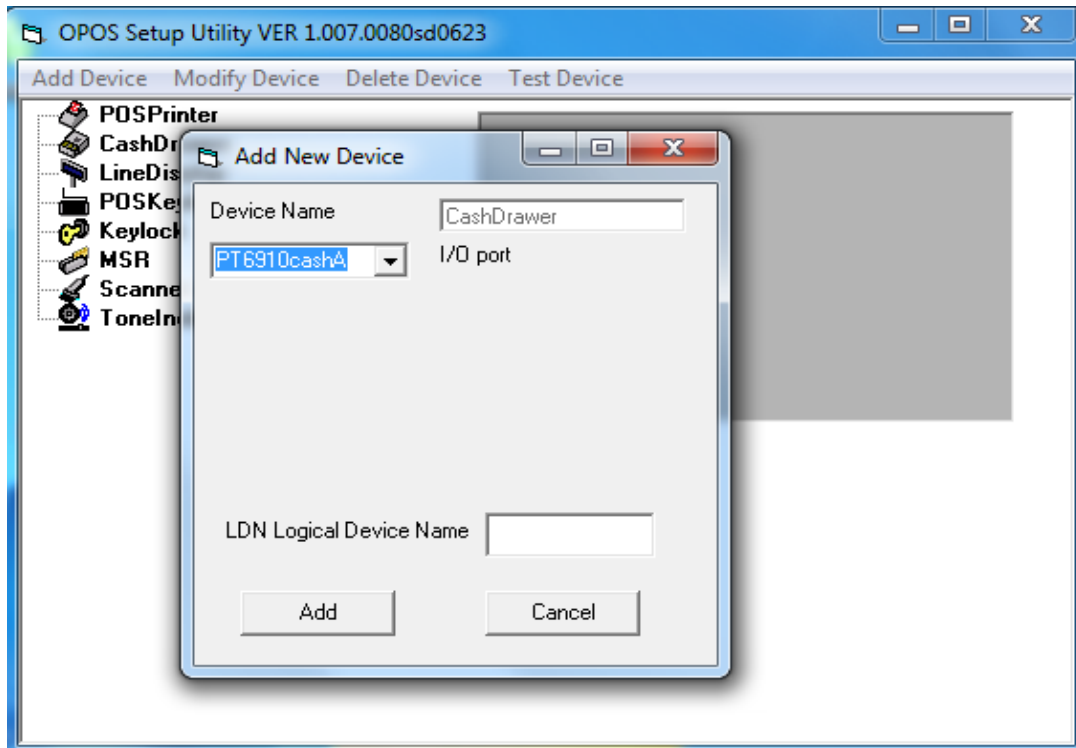


## Setting Cash Drawer

1. Click on Start, Go to Partner OPOS and select Setup OPOS



2. Click on Add Device and select Device Name PT6910CashA

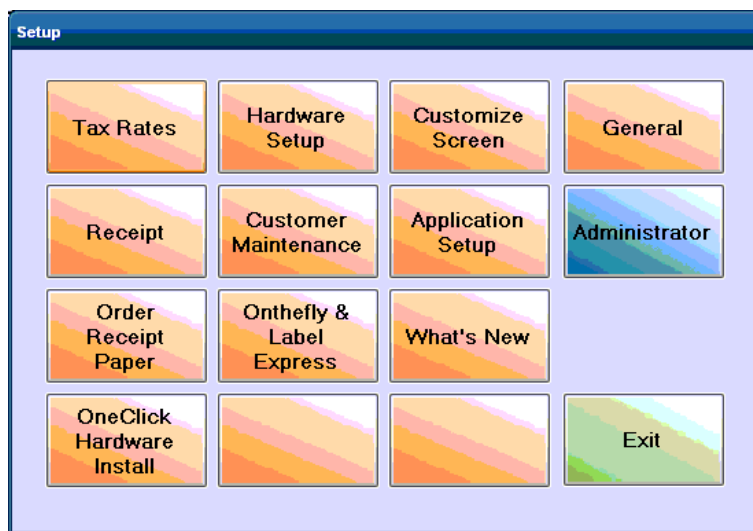


**Note:** We have program pole display to work from the corner store, so you don't need to install any driver for the pole display.

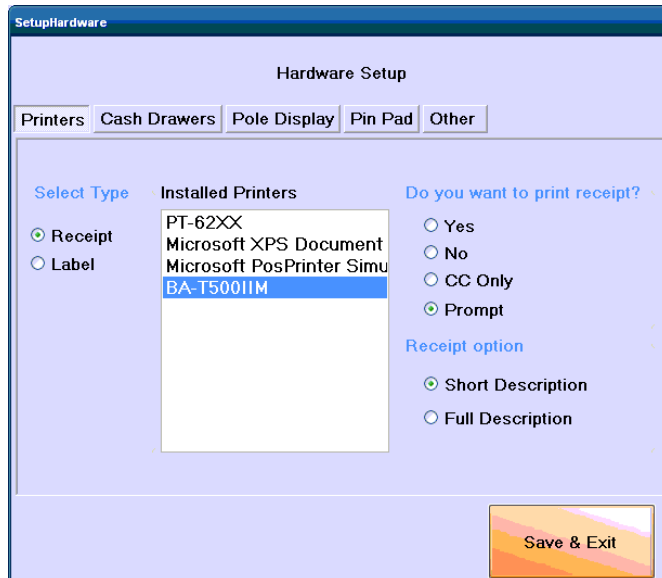
**Using Printer, Cash Drawer and Pole Display with Corner Store POS:**



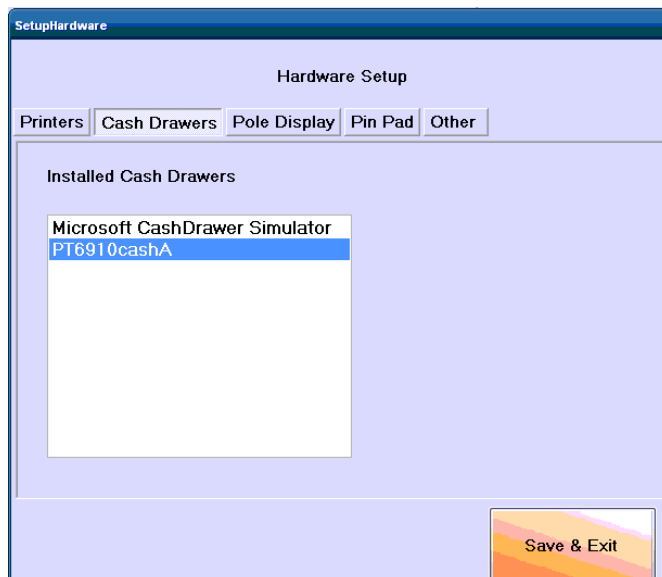
- 1 . Open Corner Store POS>Set Up>Hardware Set up.



2. Within Hardware Setup select Printers tab. Select the name of printer which you had added within Installed Printers list. Select BA-500IIM.

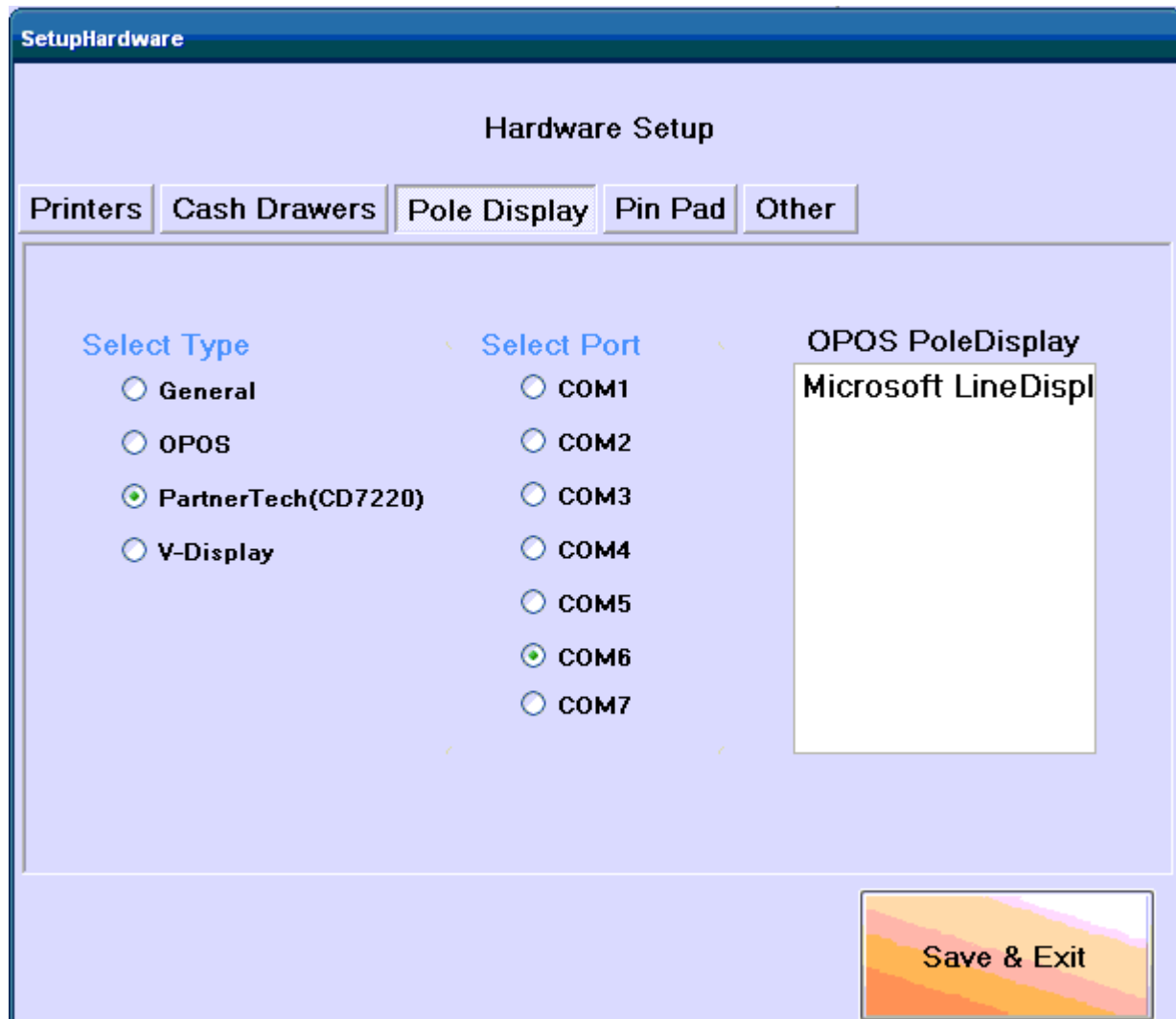


3. Select the option (Yes, No or Prompt) to print the receipt and then select Save & Exit.
4. Select Cash Drawers tab.
5. Select the name of cash drawer which you had added within Installed Cash Drawers list and then select Save & Exit.





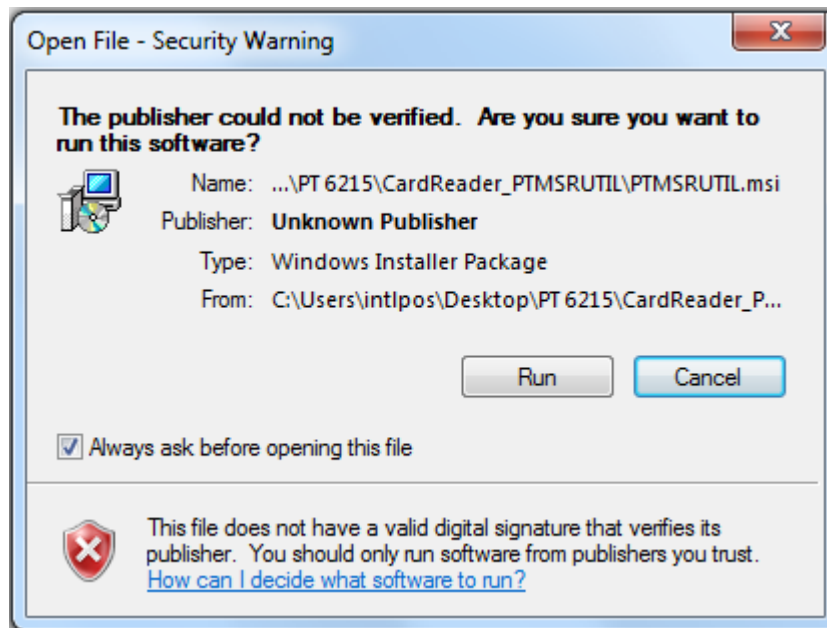
6. Select Pole Display Tab.
7. Select the CD7220 and COM6. Select the Pole and Click on Save & Exit



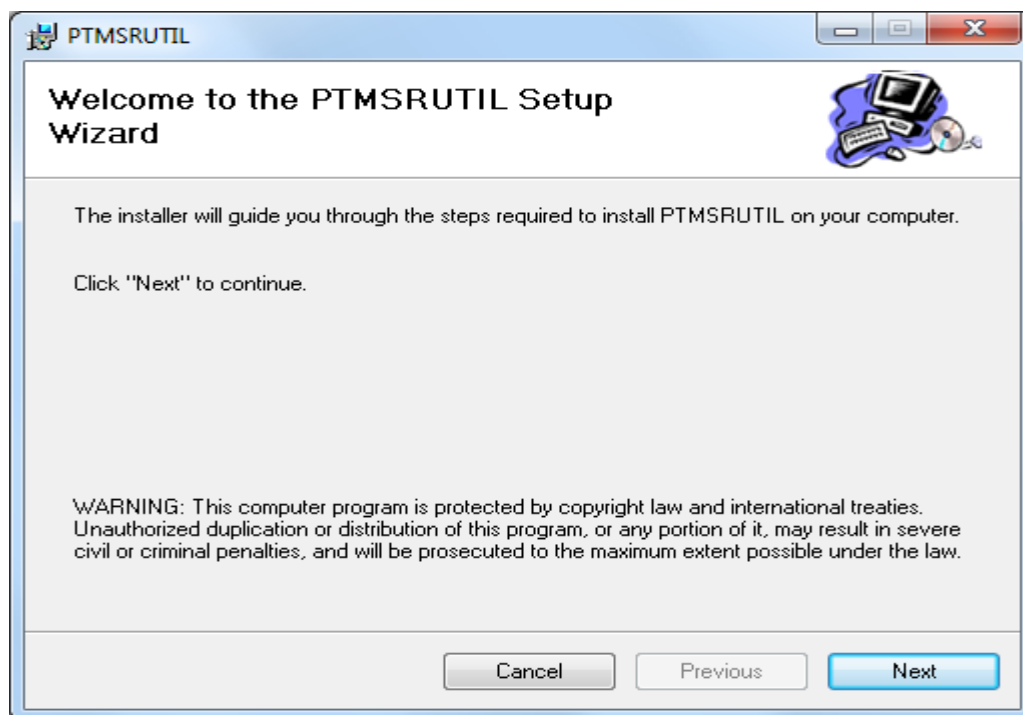
8. To apply changes to take place closed Corner Store and re login.

### Installing Appropriate Drivers For Cash Reader

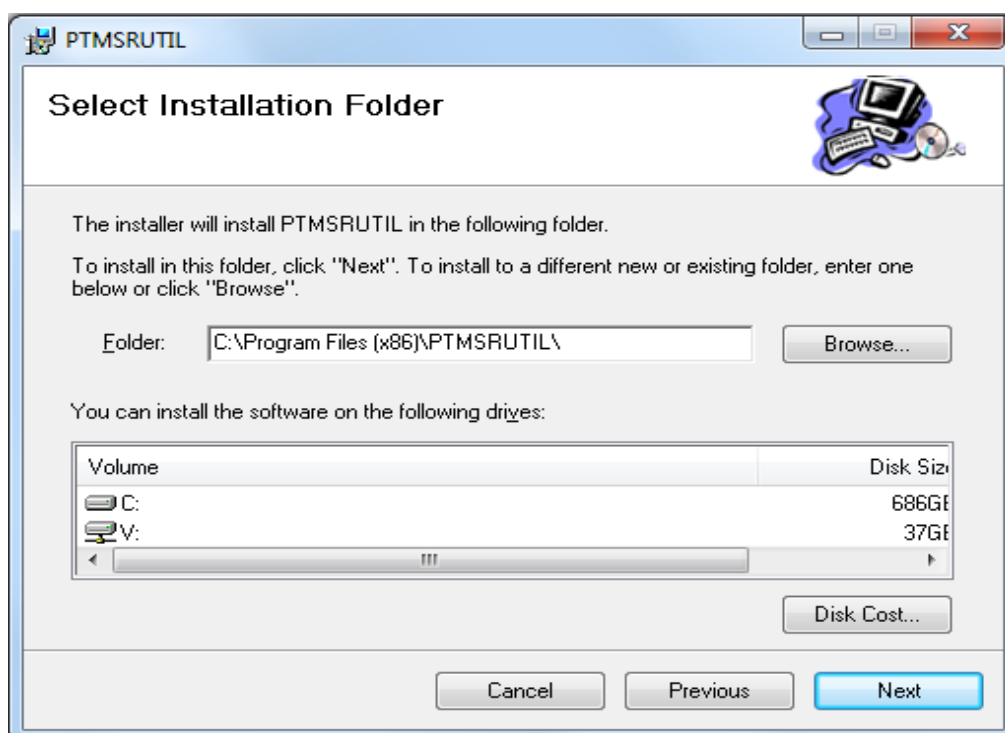
1. Start by downloading file, which can be downloaded from  
[http://cornerstorepos.com/downloads/hardware/CardReader\\_PTMSRUTIL.zip](http://cornerstorepos.com/downloads/hardware/CardReader_PTMSRUTIL.zip)
2. Download, extract file and run PTMSRUTIL



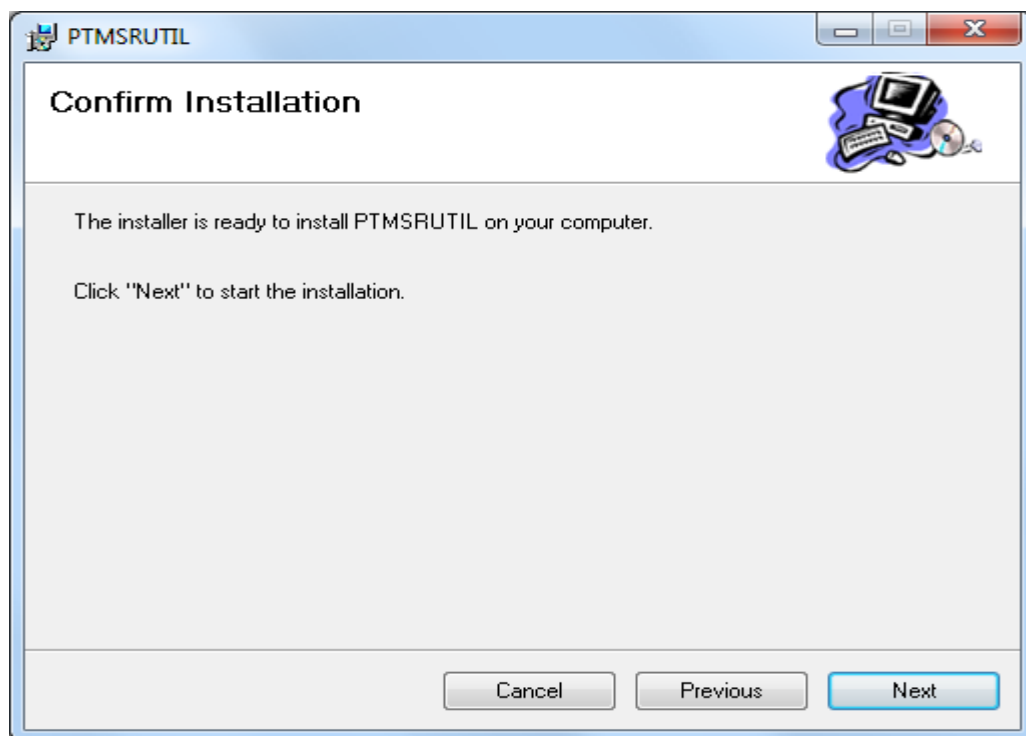
3. Click Next to Continue.



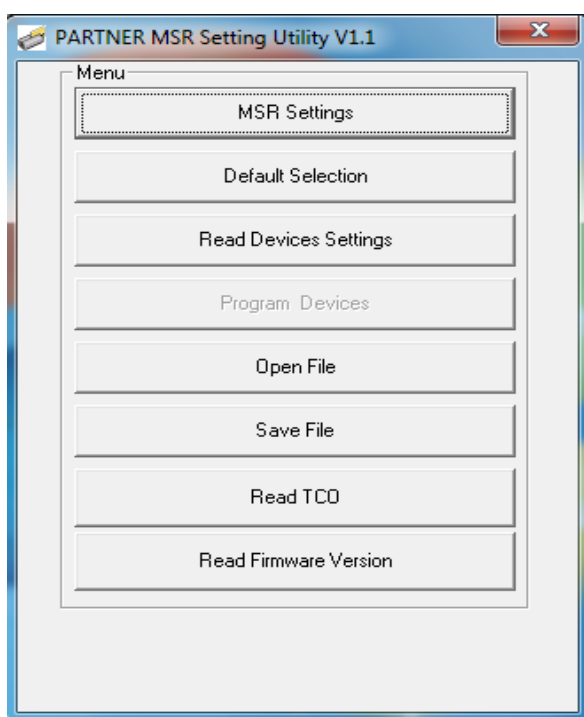
4. Click Next to Select Installation Folder.



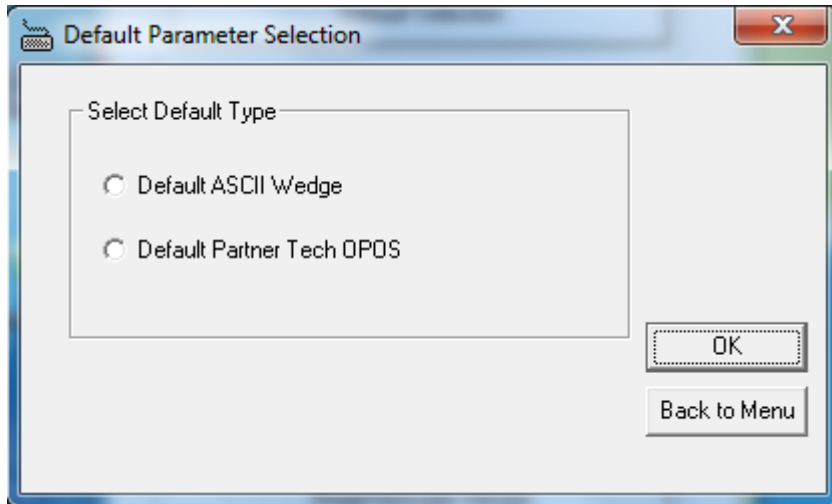
5. Click Next to start installation.



6. After successful installation, click on Start button and open PARTNER MSR Utility



7. Click on Default Selection and then Select Default ASCII Wedge



8. Please wait for processing and then re-start the computer.
9. Open Notepad and swipe your card. You should be able to get card number on your notepad.