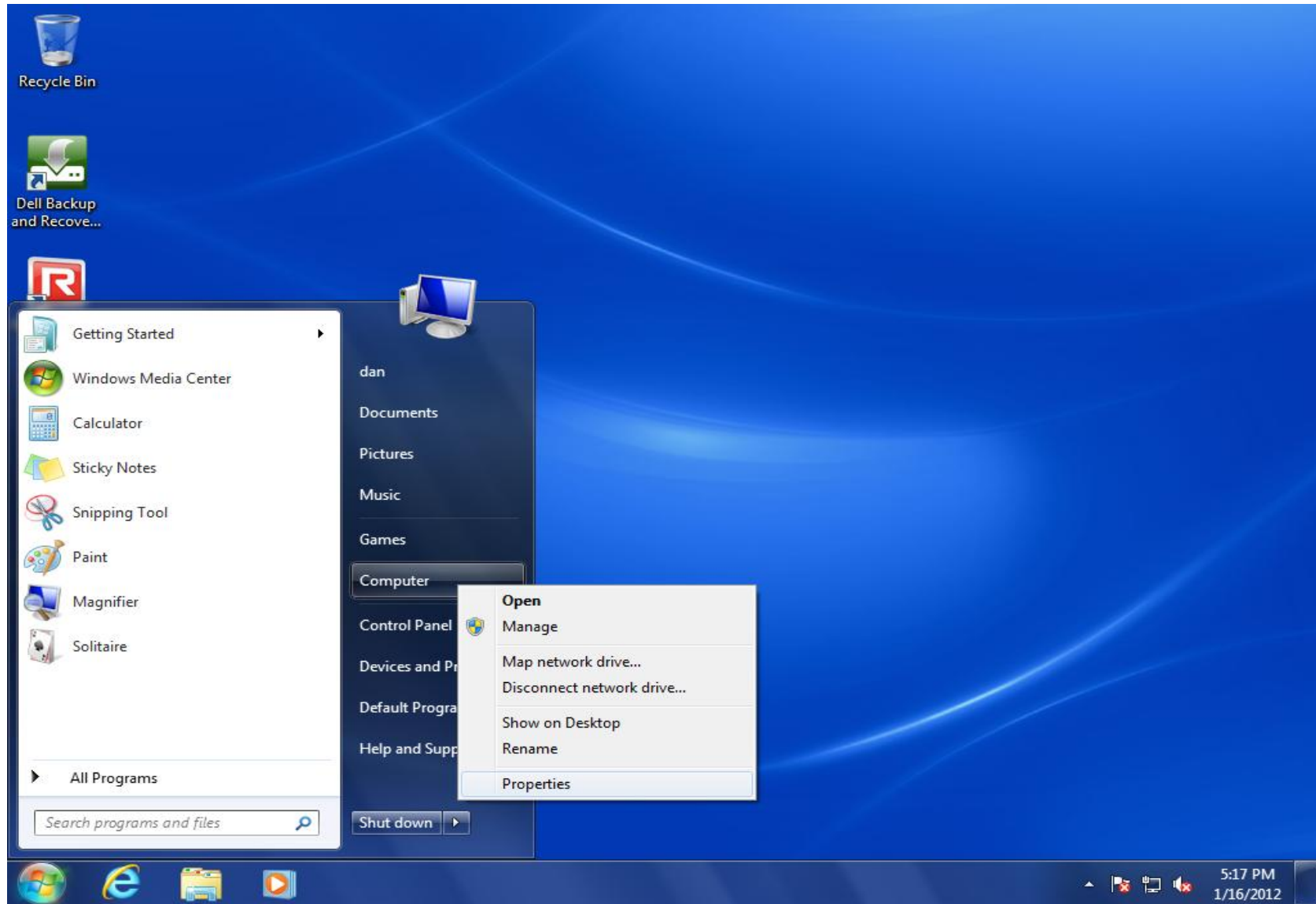


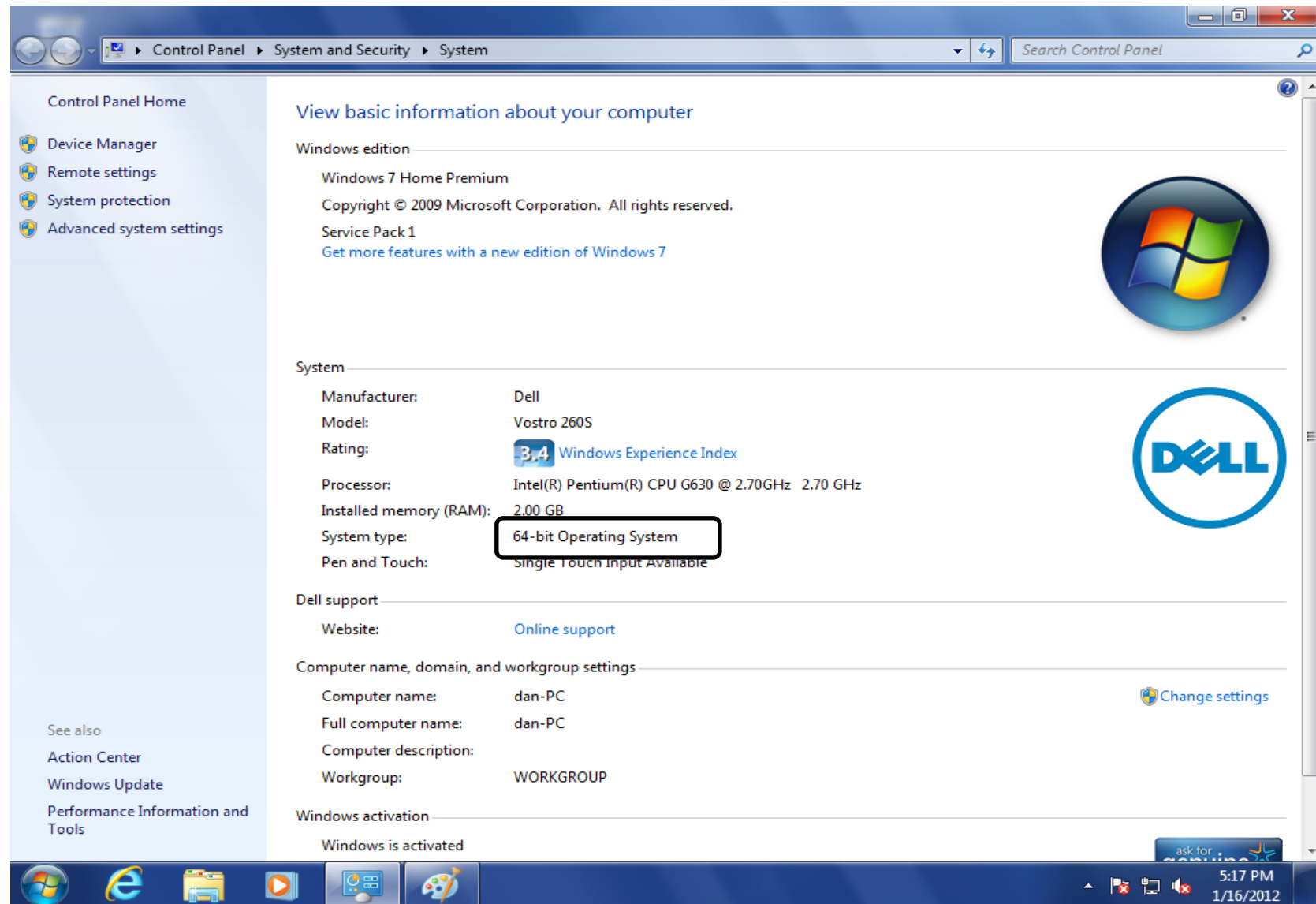
International Point of Sale: Corner Store POS Installation Guide

Step 1: To download the proper setup file(32B or 64B) for Corner Store you will need to check your system type. Go to Start>Right click on Computer and select Properties.



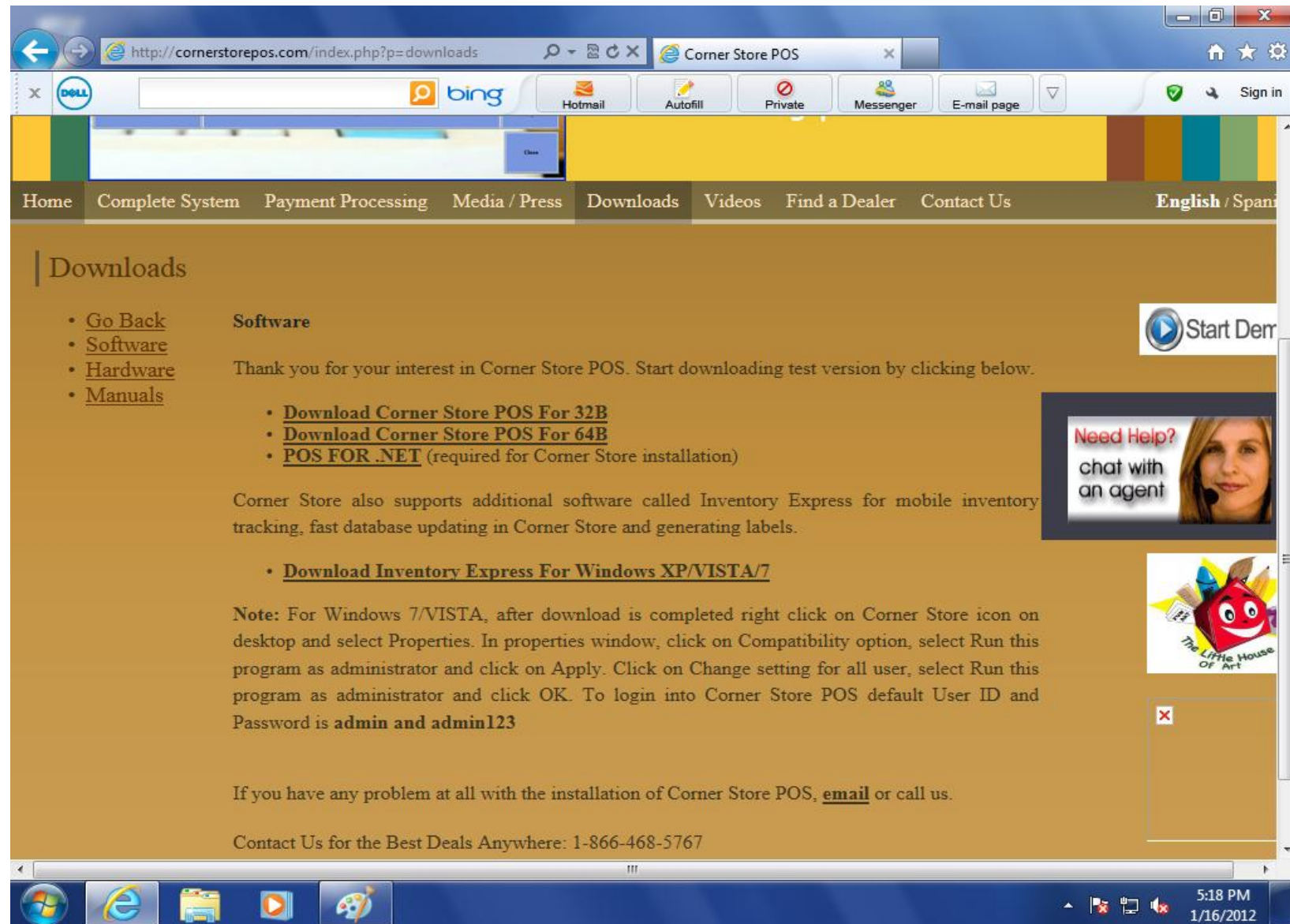
International Point of Sale: Corner Store POS Installation Guide

Step 2: You can locate the type of Operating System under System Type.



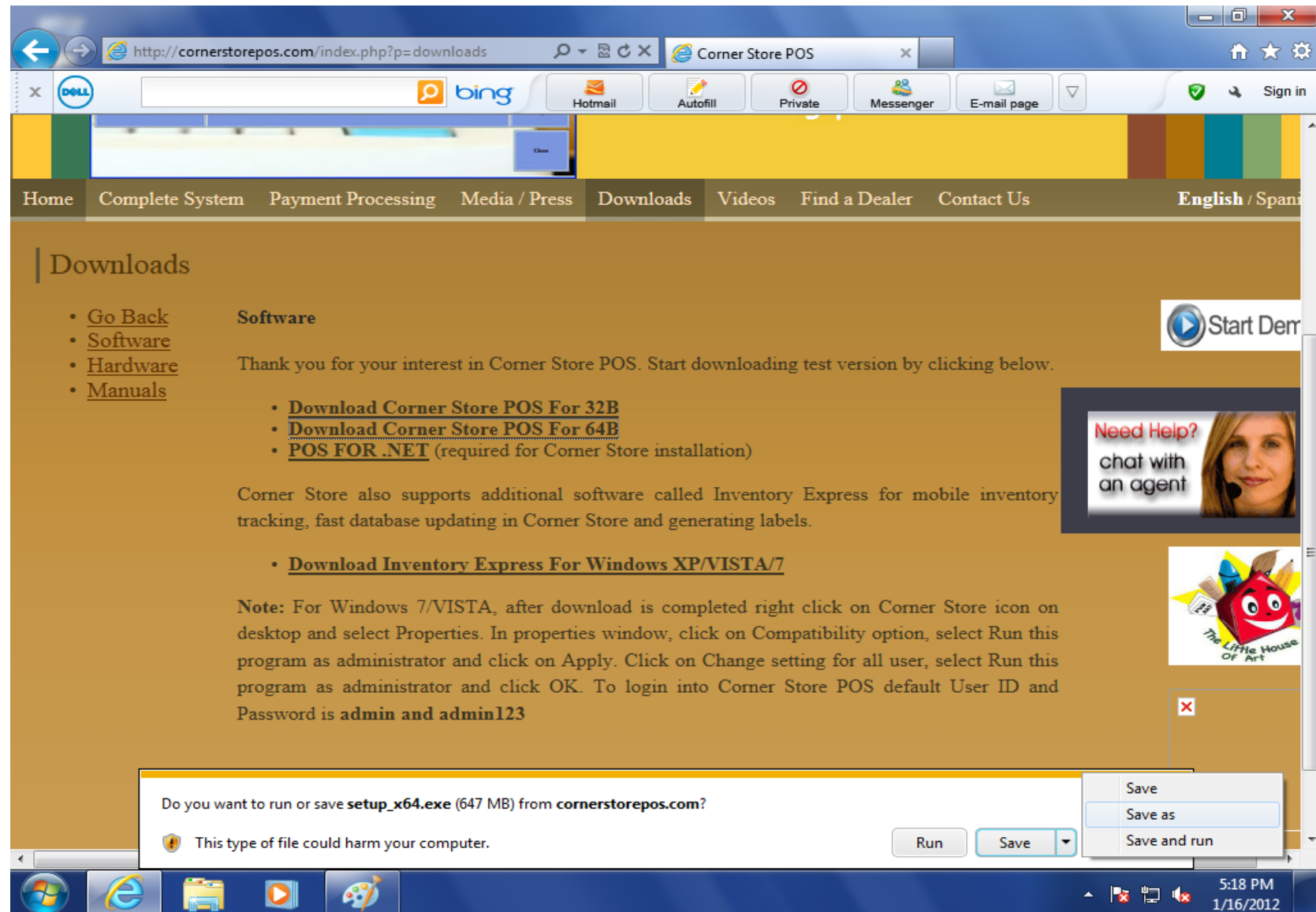
International Point of Sale: Corner Store POS Installation Guide

Step 3: Now you can choose the correct file for your system type you can download it from our website i.e. www.cornerstorepos.com



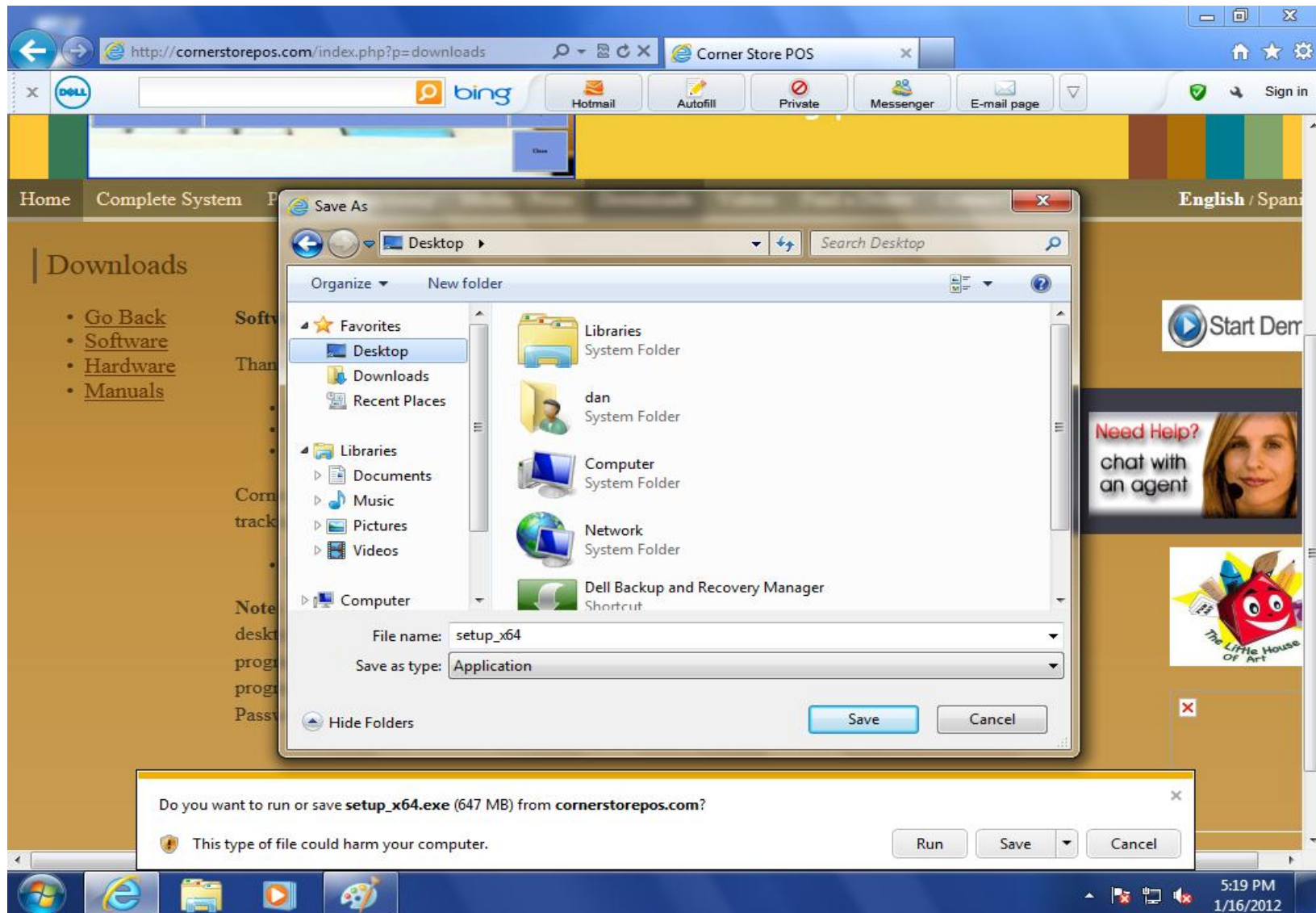
International Point of Sale: Corner Store POS Installation Guide

Step 4: Select the file and click **Save As**



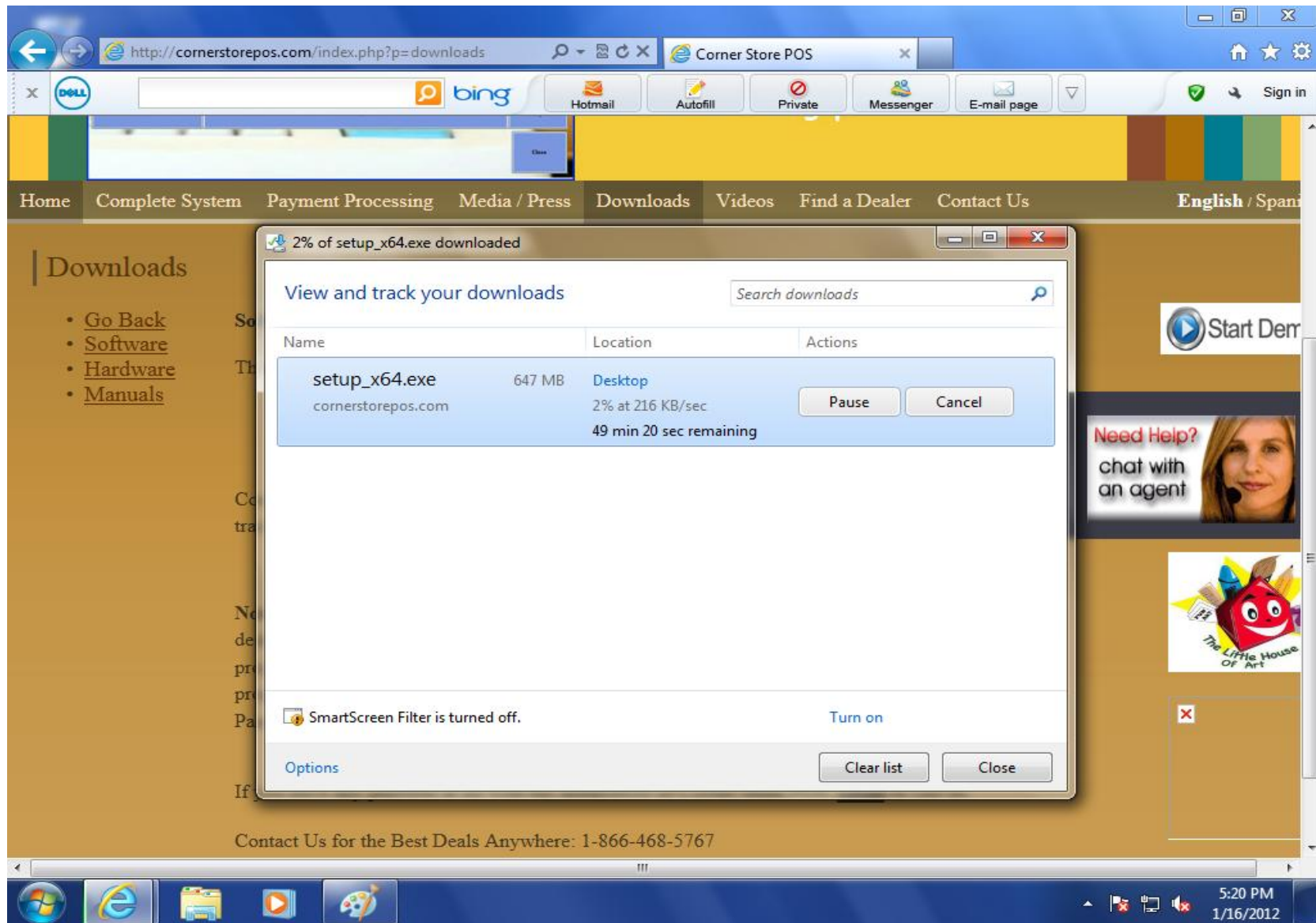
International Point of Sale: Corner Store POS Installation Guide

Step 5: Click on Desktop located on the left hand side to easily locate it once is has been installed and then click on **Save**



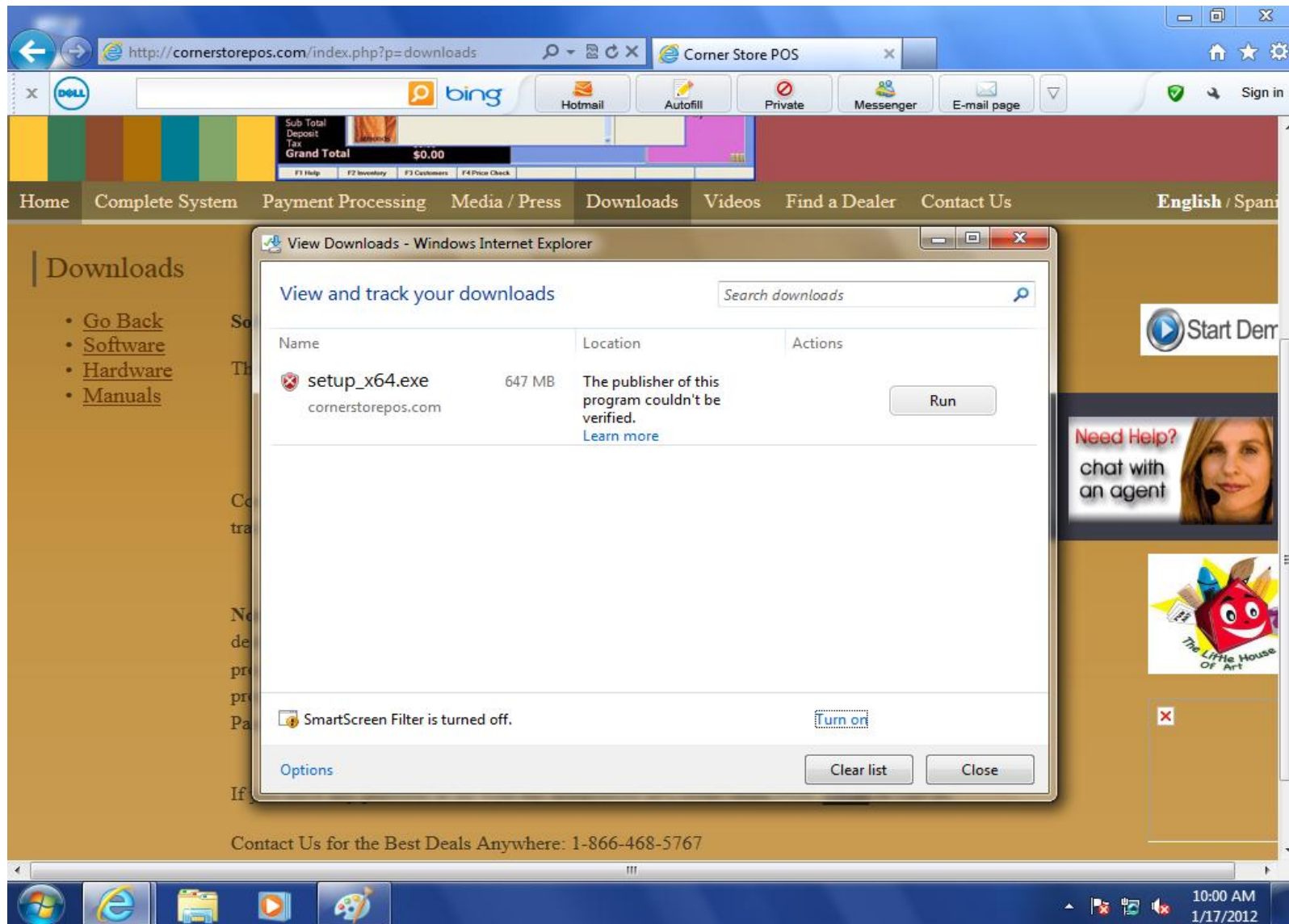
International Point of Sale: Corner Store POS Installation Guide

Step 6: The file will begin to save onto your Desktop



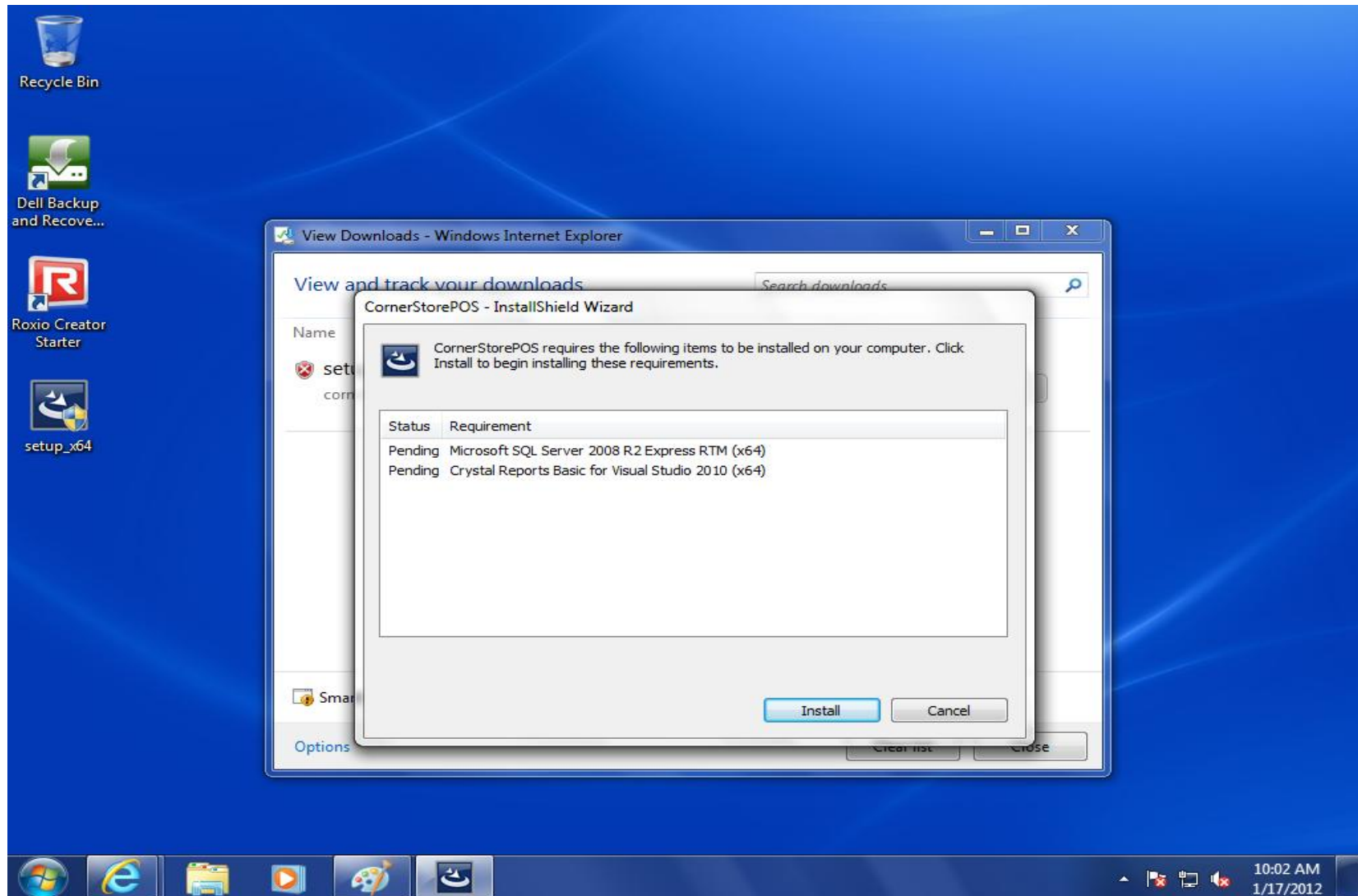
International Point of Sale: Corner Store POS Installation Guide

Step 7: Click **Run**



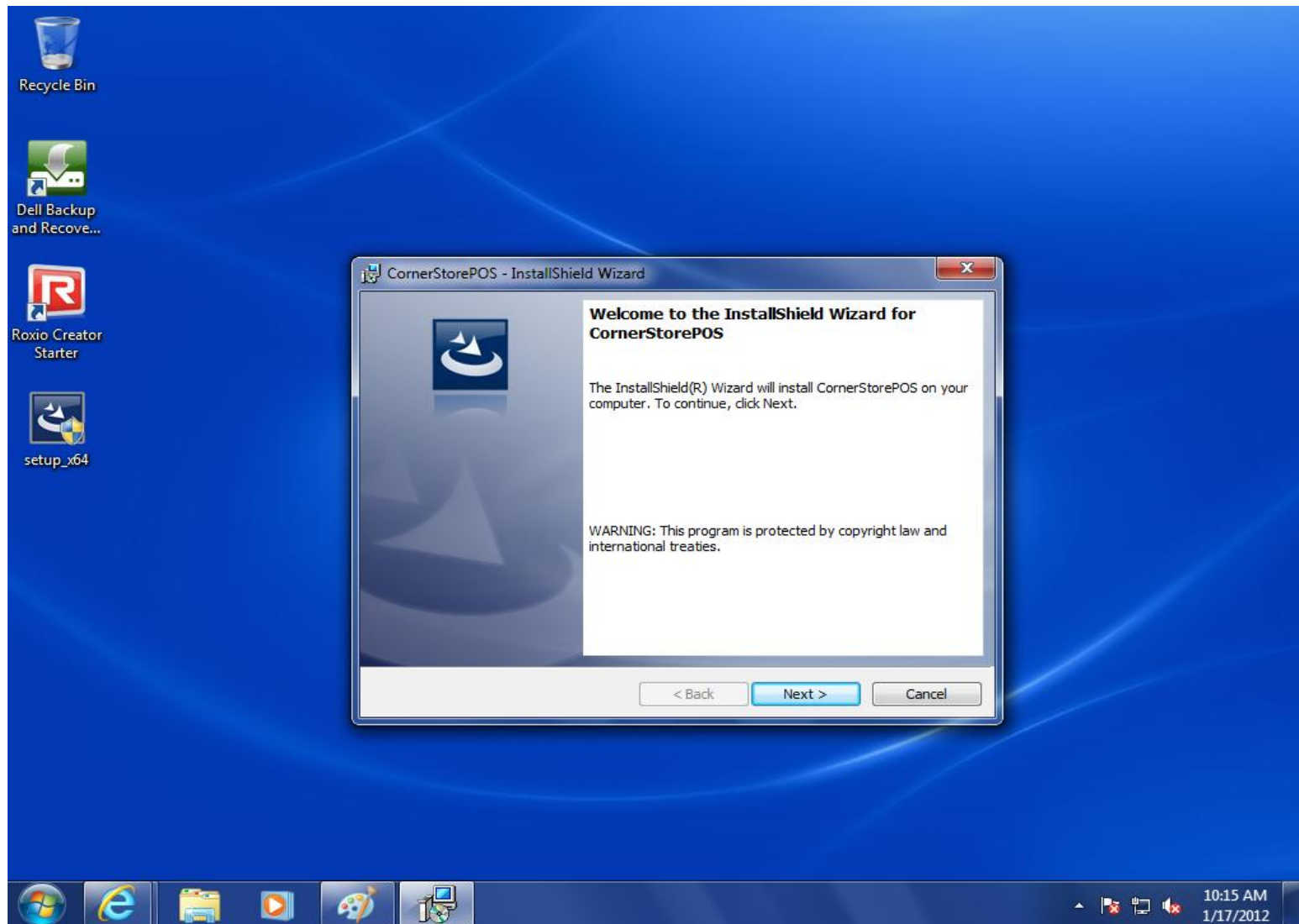
International Point of Sale: Corner Store POS Installation Guide

Step 8: When you begin installation for the first time, a list of pre-requisites will appear notifying what you may need to download before installing Corner Store software. Please click on **Install**. **Once installations of other programs are complete, you will have to restart your computer.** A message dialog box will appear indicating whether your installation was successful or not.



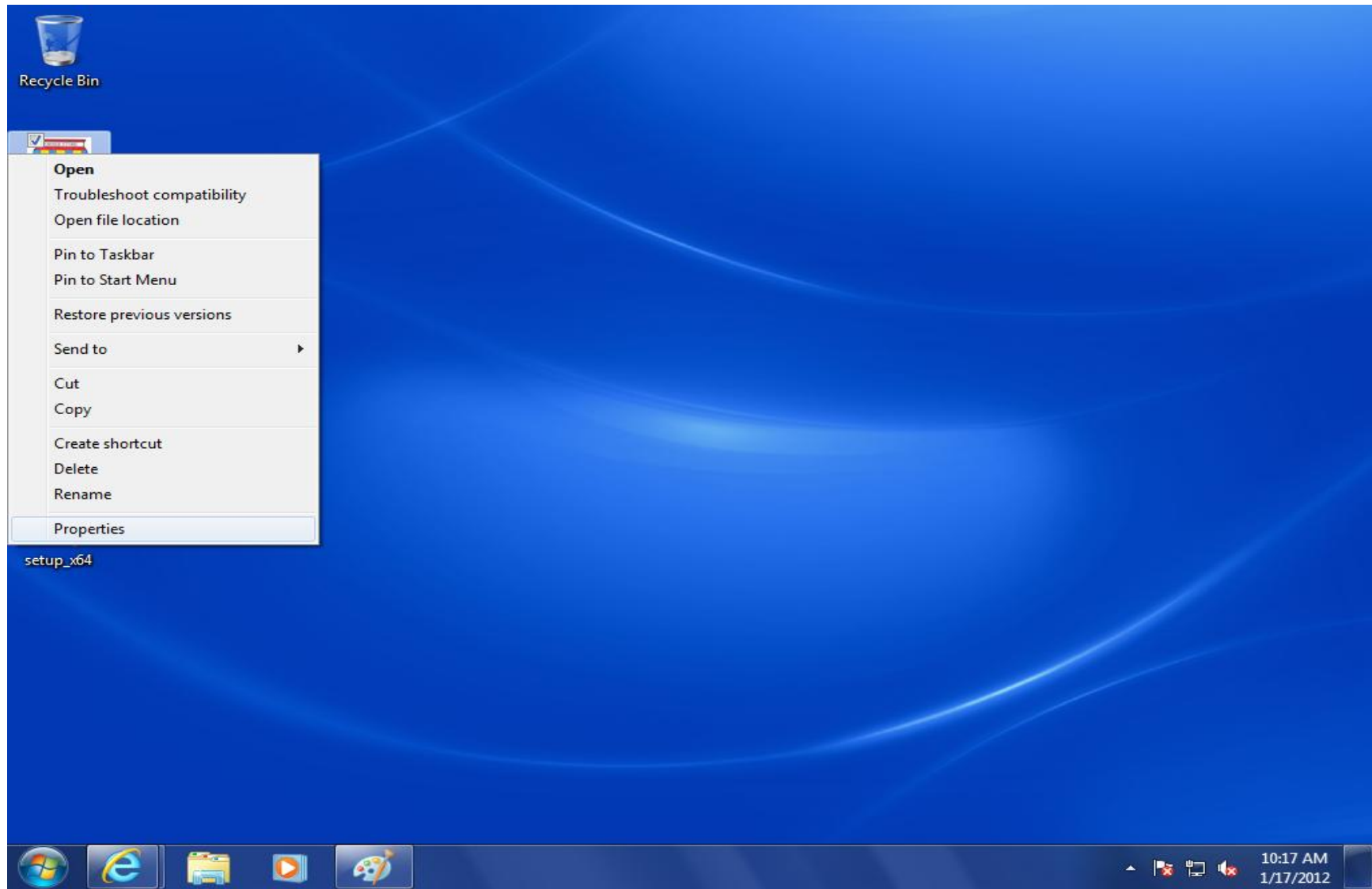
International Point of Sale: Corner Store POS Installation Guide

Step 9: Click on **Next** and begin installing Corner Store software. Follow each prompt as it appears.



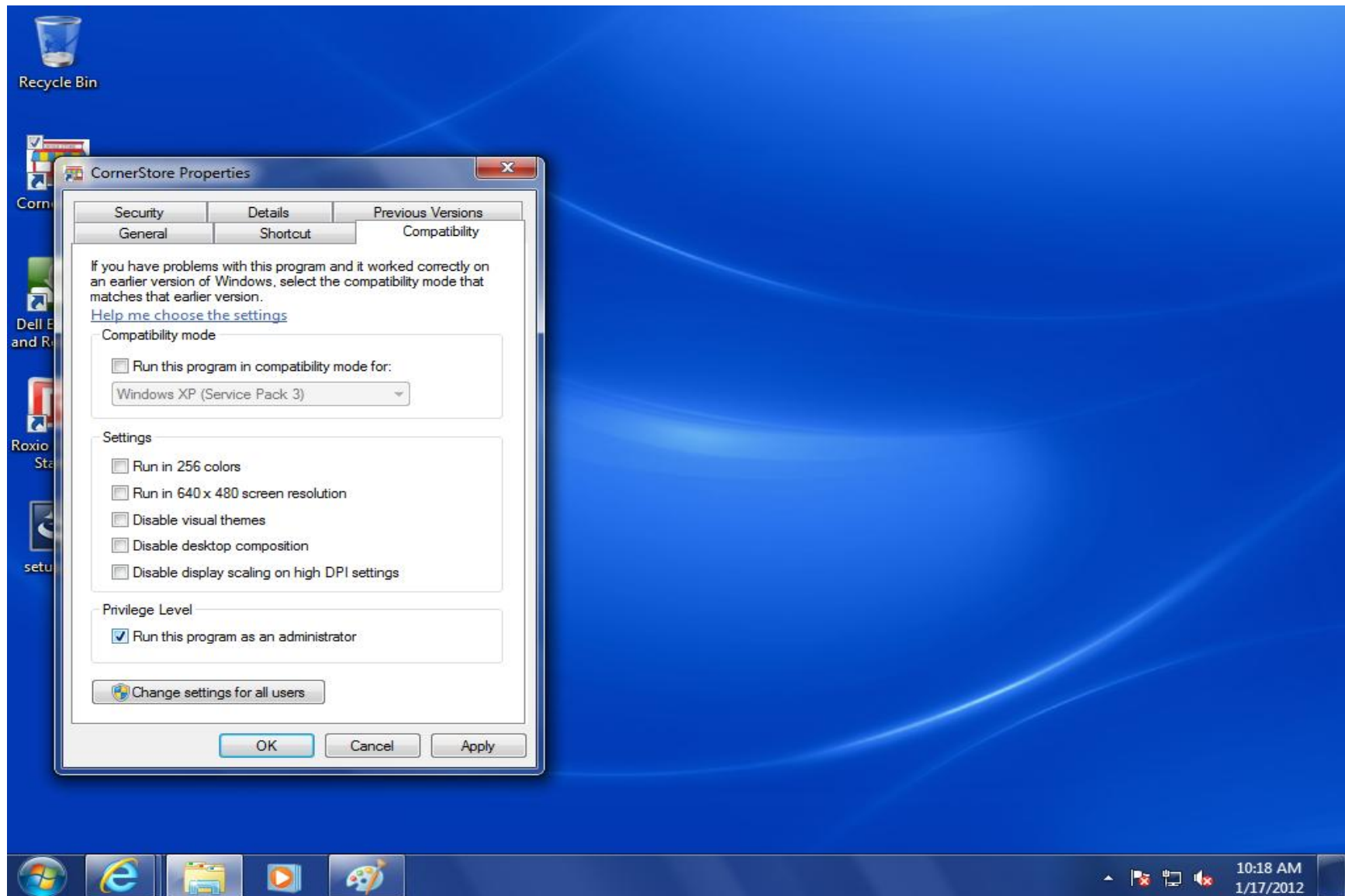
International Point of Sale: Corner Store POS Installation Guide

Step 10: After successful installation of Corner Store you will find the Corner Store icon appear on your Desktop. Right click on the Corner Store icon on and select Properties.



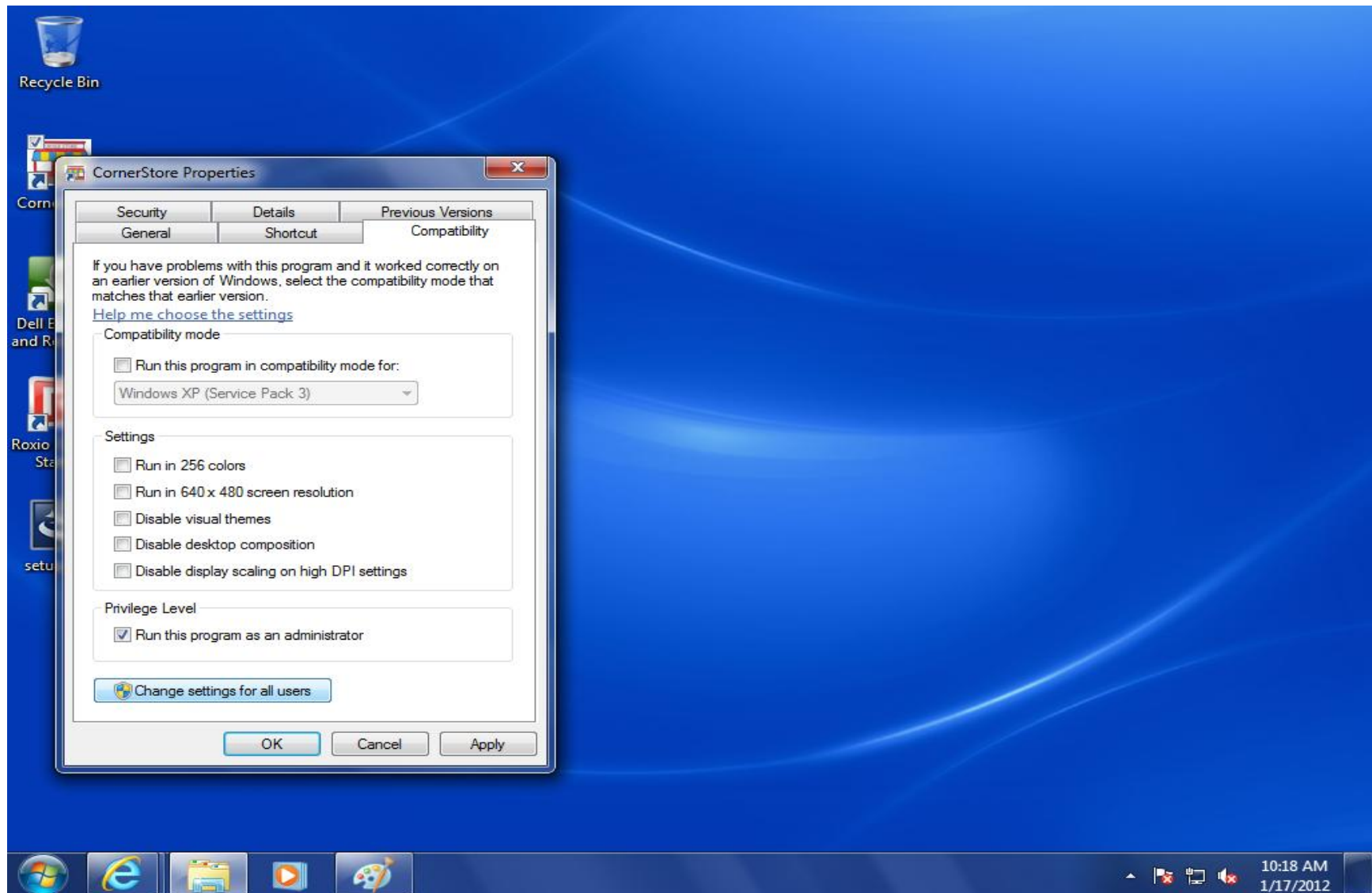
International Point of Sale: Corner Store POS Installation Guide

Step 11: In the Properties Window, click on the Compatibility tab. Please check Run this program as an administrator and click on Apply.



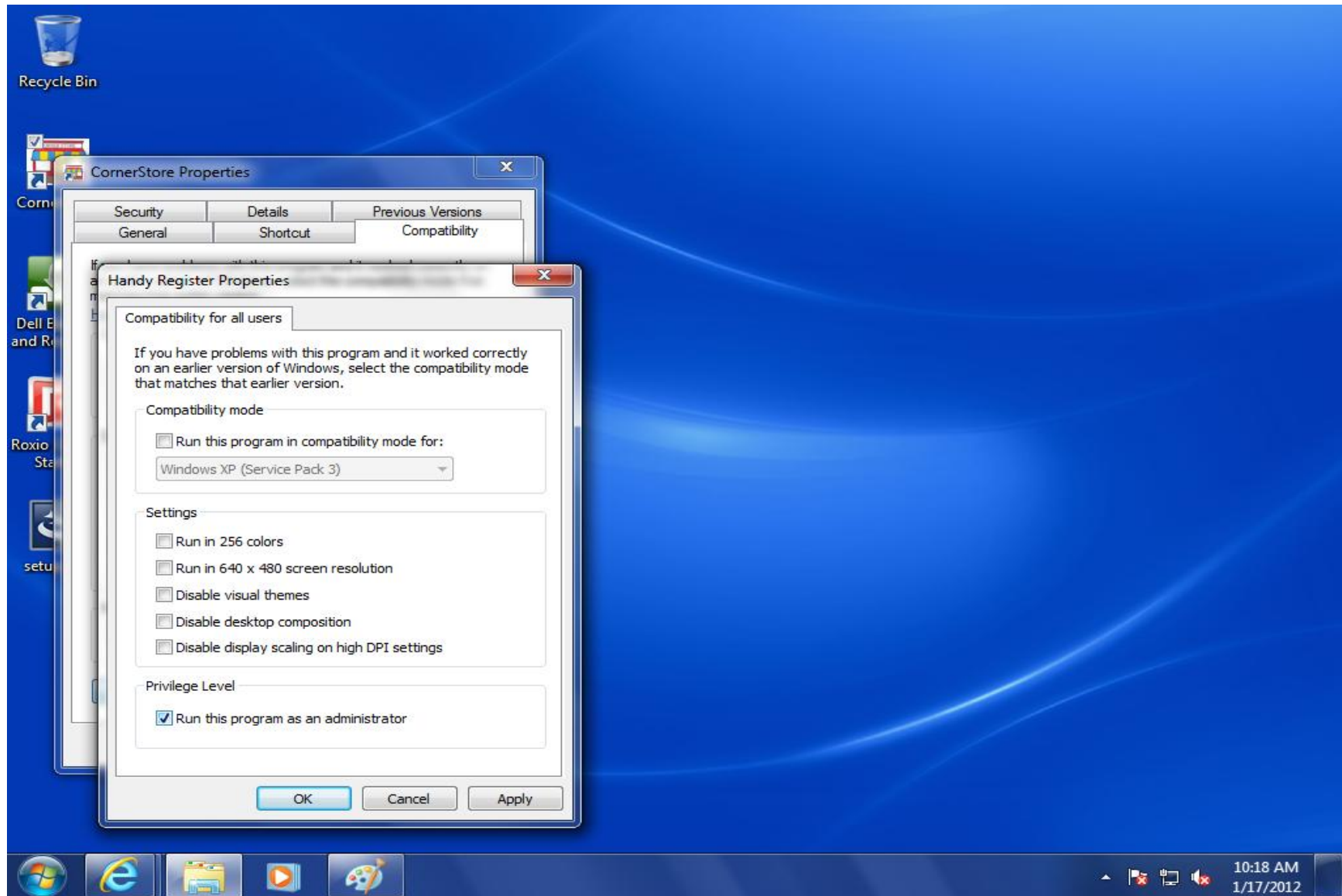
International Point of Sale: Corner Store POS Installation Guide

Step 12: Click on Change setting for all users, select Run this program as an administrator and click OK.



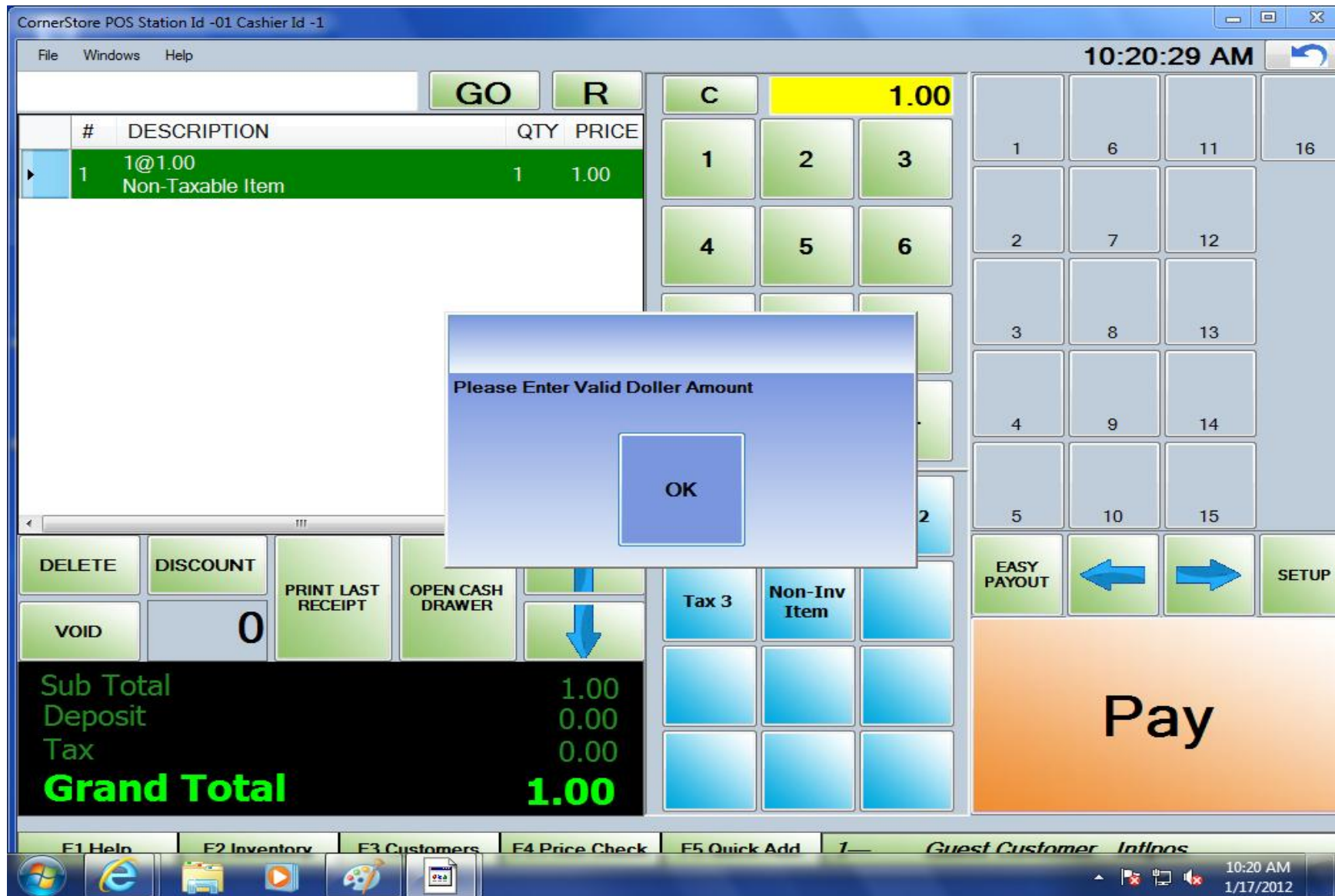
International Point of Sale: Corner Store POS Installation Guide

Step 13: Click Ok two times and then click on the Corner Store icon.



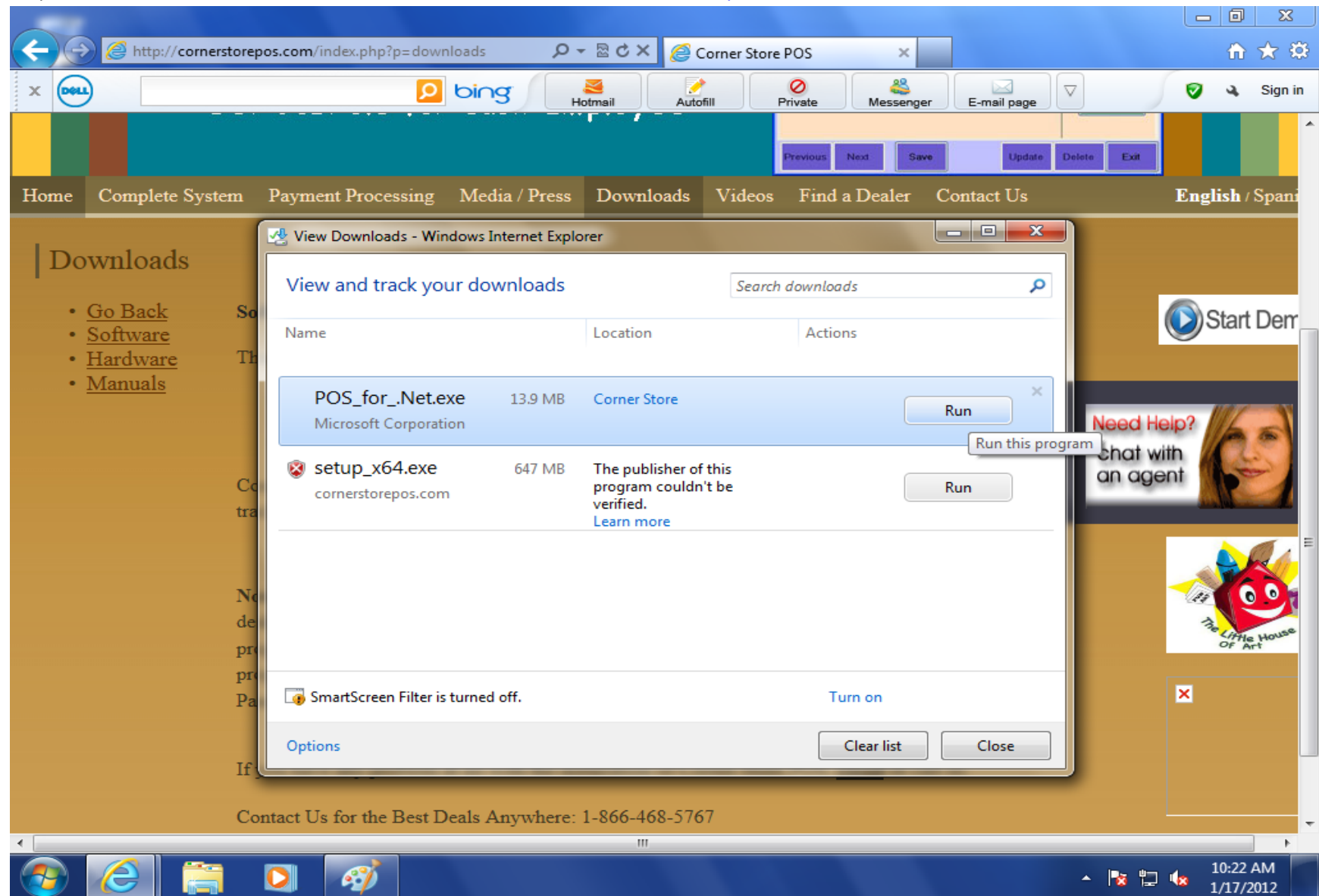
International Point of Sale: Corner Store POS Installation Guide

Step 14: You will receive this error message if you haven't installed POS For.NET required for Corner Store.



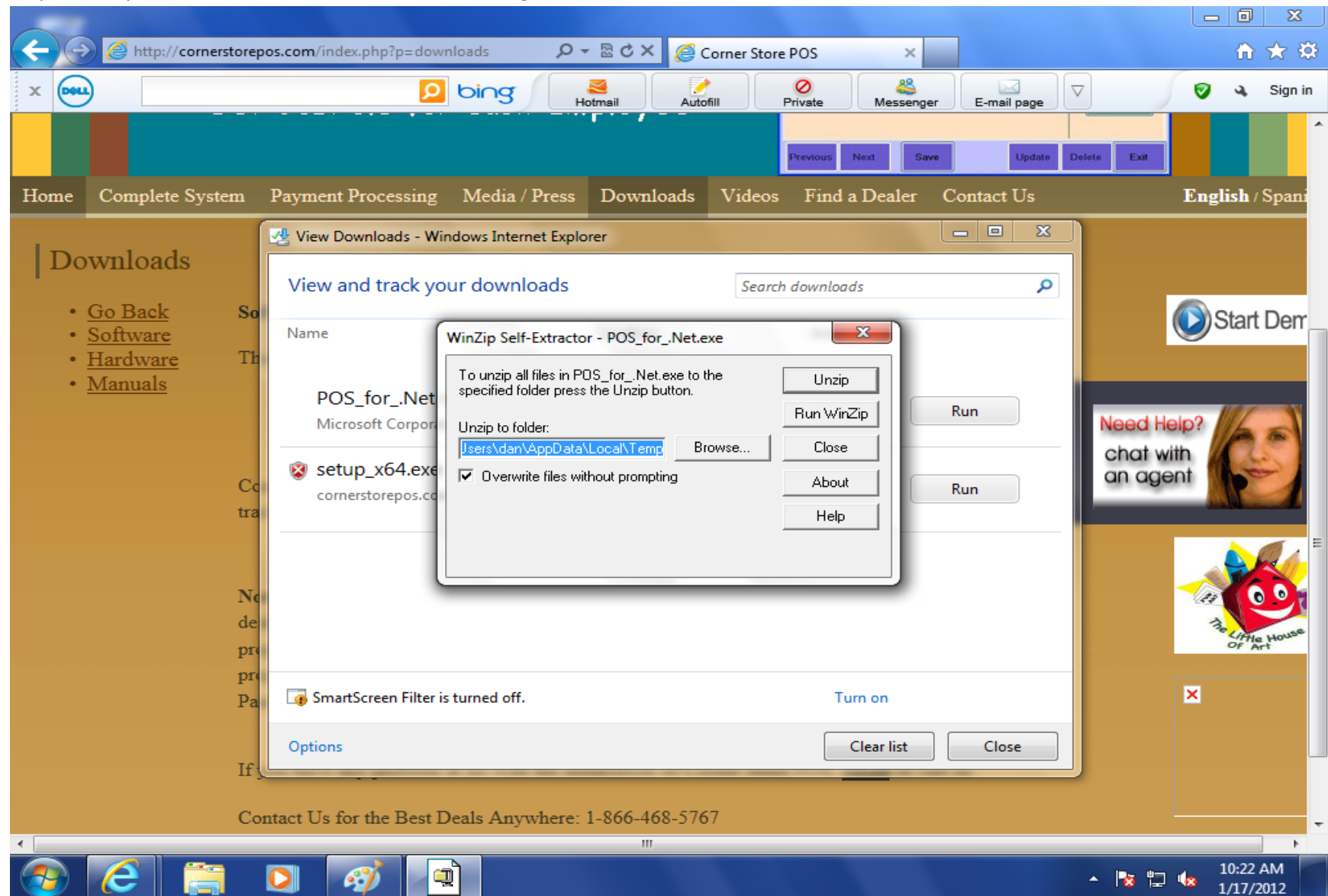
International Point of Sale: Corner Store POS Installation Guide

Step 15: You can download POSFor.NET from our website i.e. www.cornerstorepos.com. Select the file and click **Run**.



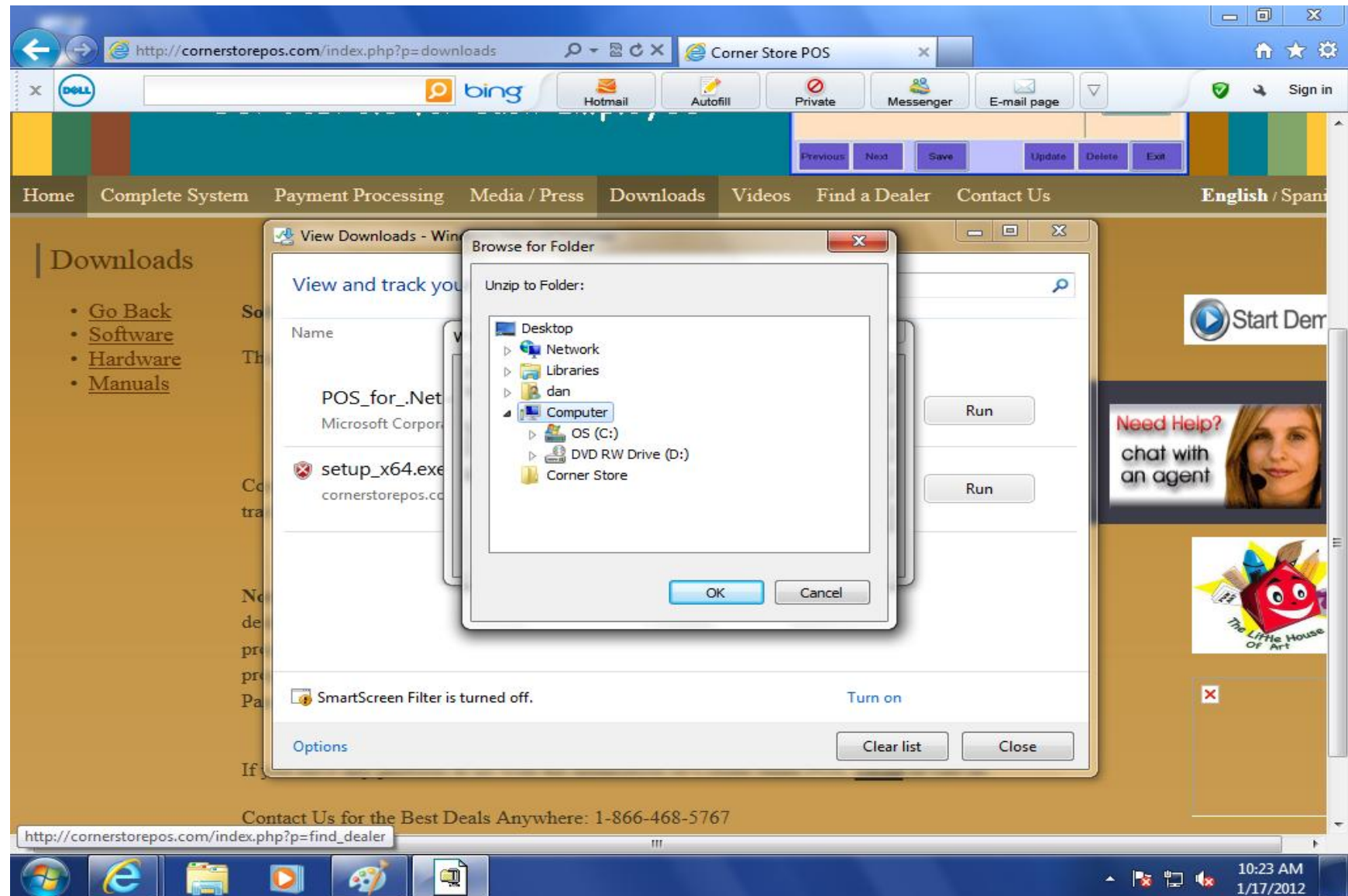
International Point of Sale: Corner Store POS Installation Guide

Step 18: For your convenience click on Browse and change the default location.



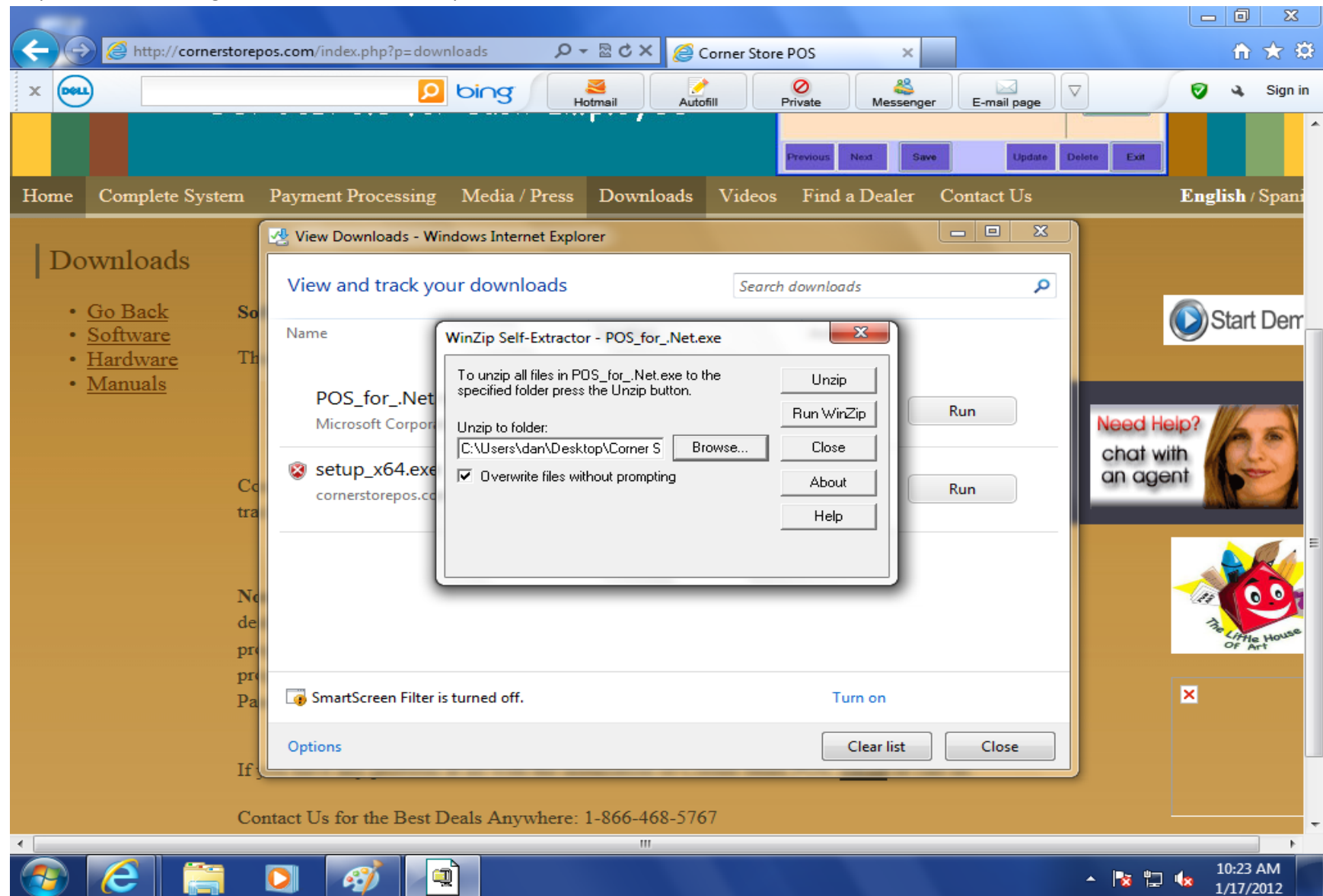
International Point of Sale: Corner Store POS Installation Guide

Step 19: You can create a Corner Store folder on the Main Screen and select default location as Corner Store folder.



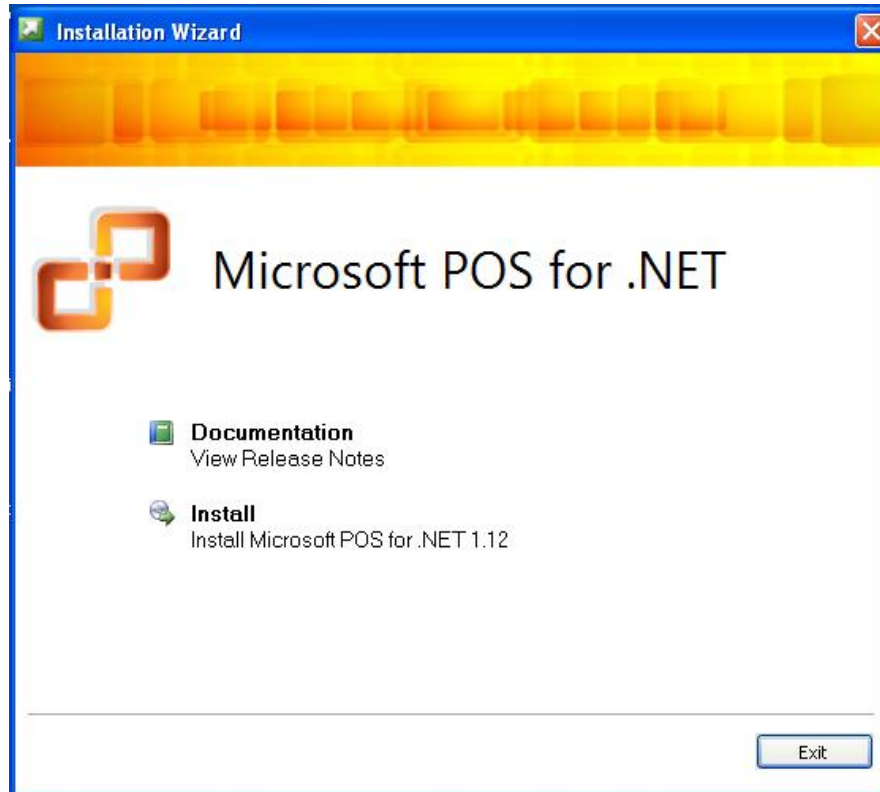
International Point of Sale: Corner Store POS Installation Guide

Step 20: After selecting the location click on Unzip and close.



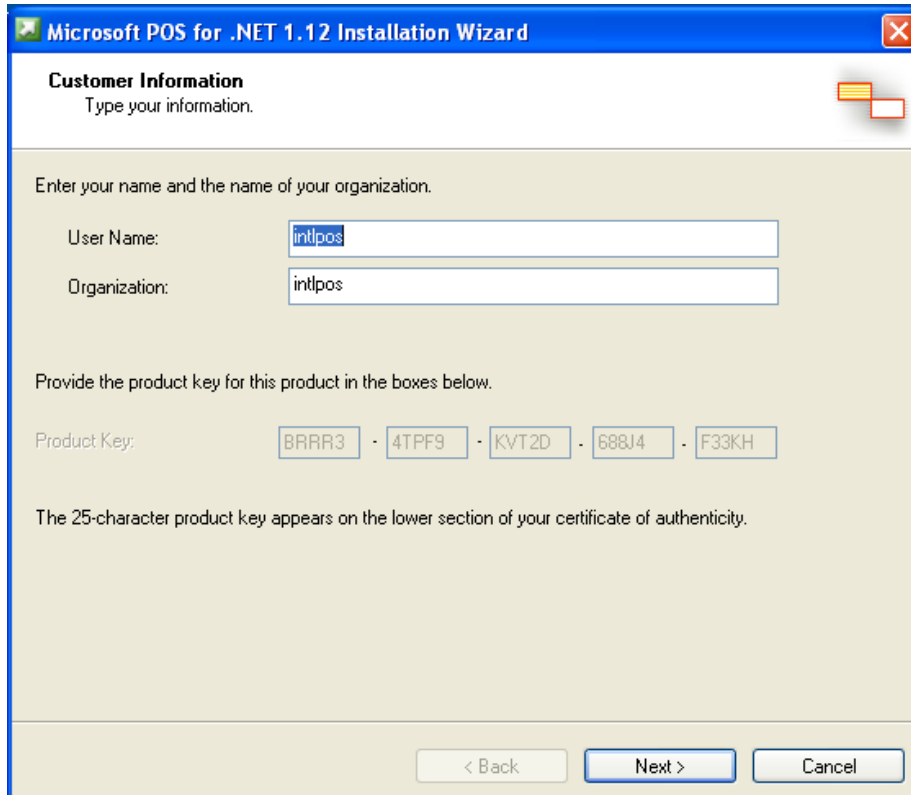
International Point of Sale: Corner Store POS Installation Guide

Step 21: Go to the proper location you have selected and click on **setup**.



International Point of Sale: Corner Store POS Installation Guide

Step 22: Enter **User name** and Organization and select **next**.



The screenshot shows the 'Microsoft POS for .NET 1.12 Installation Wizard' window. The title bar is blue with the Microsoft logo and the text 'Microsoft POS for .NET 1.12 Installation Wizard'. The window has a standard Windows XP-style border with minimize, maximize, and close buttons. The main content area is light beige. At the top, the section is titled 'Customer Information' with the instruction 'Type your information.' Below this, there is a prompt: 'Enter your name and the name of your organization.' There are two text input fields: 'User Name:' with the text 'intlpos' and 'Organization:' with the text 'intlpos'. Below these, there is a prompt: 'Provide the product key for this product in the boxes below.' There are five small text input boxes for the product key, containing the characters 'BRRR3', '4TPF9', 'KVT2D', '688J4', and 'F33KH' separated by hyphens. At the bottom, there is a note: 'The 25-character product key appears on the lower section of your certificate of authenticity.' At the very bottom of the window, there are three buttons: '< Back', 'Next >', and 'Cancel'.

Microsoft POS for .NET 1.12 Installation Wizard

Customer Information
Type your information.

Enter your name and the name of your organization.

User Name:

Organization:

Provide the product key for this product in the boxes below.

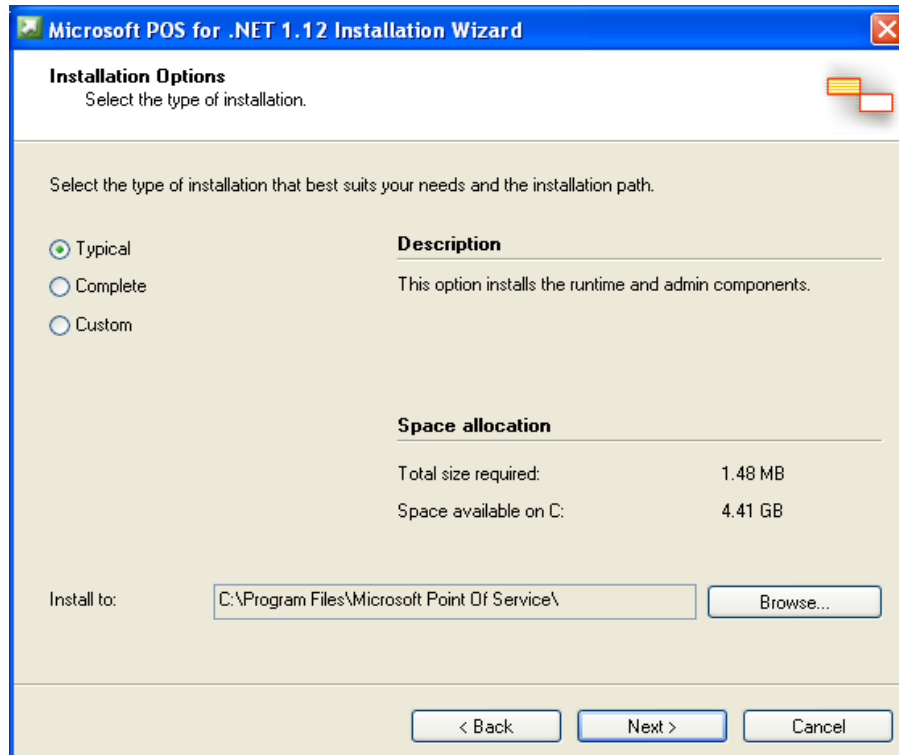
Product Key: - - - -

The 25-character product key appears on the lower section of your certificate of authenticity.

< Back Next > Cancel

International Point of Sale: Corner Store POS Installation Guide

Step 23: Select **Typical** and then **Next**.



International Point of Sale: Corner Store POS Installation Guide

Step 24: Select **Install** and then **Finish**.

