

INTERNATIONAL POINT OF SALE

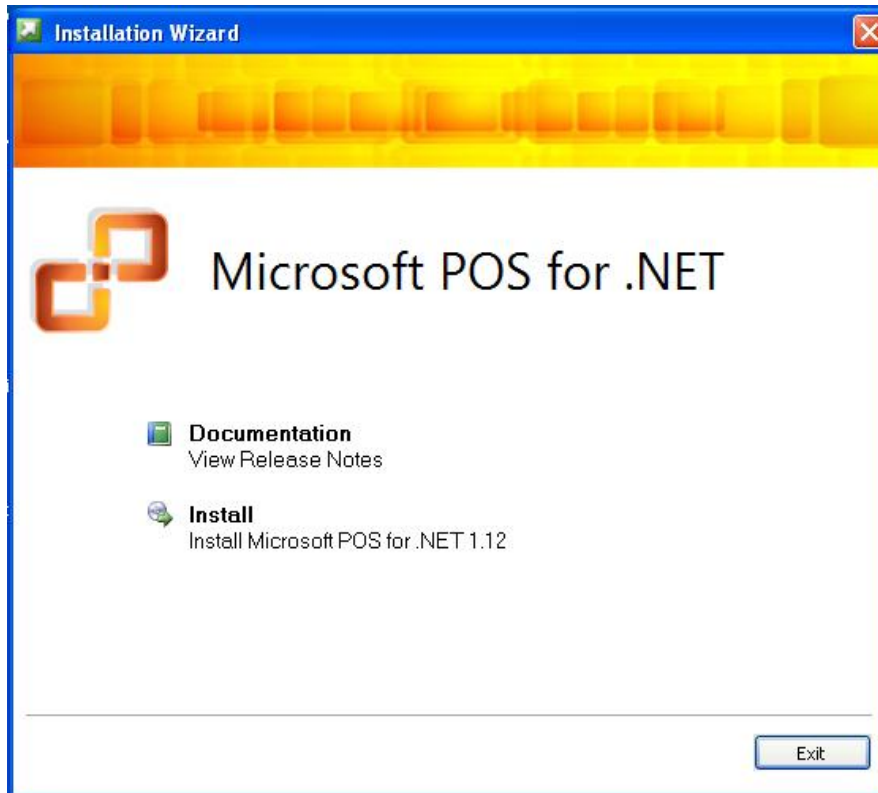
Installing the Posiflex PP 7000 II Thermal Printer



Corner Store POS supports POSIFLEX PP 7000 II series printers and cash drawer. This document will detail the process of installing the correct drivers for the printer and cash drawer and then setting up the printer and cash drawer in Corner Store POS.

Installing Microsoft POS for .NET

1. The Installer for Microsoft POS for .NET can be downloaded at:
http://cornerstorepos.com/downloads/hardware/POS_for_.Net.exe
2. Run the installer and select **Install**.



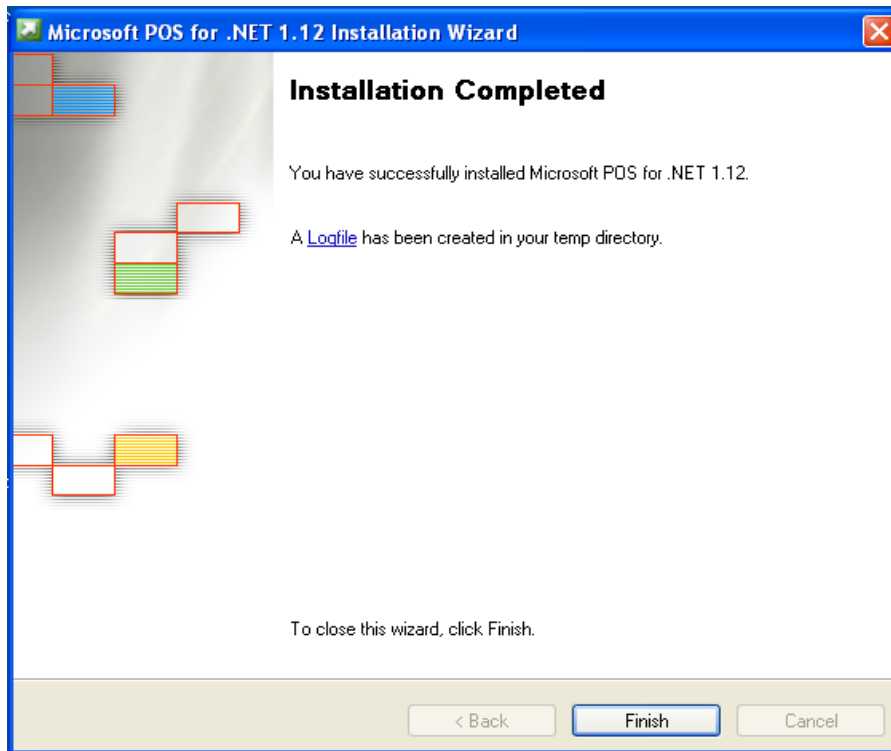
3. Enter **User Name** and **Organization** and select **Next**.

The screenshot shows the 'Customer Information' window of the 'Microsoft POS for .NET 1.12 Installation Wizard'. The window has a blue title bar and a yellow icon. The main area is light beige. At the top, it says 'Customer Information' and 'Type your information.' Below this, it says 'Enter your name and the name of your organization.' There are two text input fields: 'User Name:' with 'intlpos' entered, and 'Organization:' with 'intlpos' entered. Below these, it says 'Provide the product key for this product in the boxes below.' There are five text input boxes for the product key: 'BRRR3', '4TPF9', 'KVT2D', '688J4', and 'F33KH'. At the bottom, it says 'The 25-character product key appears on the lower section of your certificate of authenticity.' There are three buttons at the bottom: '< Back', 'Next >', and 'Cancel'.

4. Select **Accept**.
5. Select **Typical** and then **Next**.

The screenshot shows the 'Installation Options' window of the 'Microsoft POS for .NET 1.12 Installation Wizard'. The window has a blue title bar and a yellow icon. The main area is light beige. At the top, it says 'Installation Options' and 'Select the type of installation.' Below this, it says 'Select the type of installation that best suits your needs and the installation path.' There are three radio buttons: 'Typical' (selected), 'Complete', and 'Custom'. To the right of the radio buttons is a table with two sections: 'Description' and 'Space allocation'. The 'Description' section has one row: 'Typical' with the description 'This option installs the runtime and admin components.' The 'Space allocation' section has two rows: 'Total size required:' with '1.48 MB' and 'Space available on C:' with '4.41 GB'. At the bottom, there is a text input field for 'Install to:' with 'C:\Program Files\Microsoft Point Of Service\' entered, and a 'Browse...' button. There are three buttons at the bottom: '< Back', 'Next >', and 'Cancel'.

6. Select **Install** and then **Finish**.

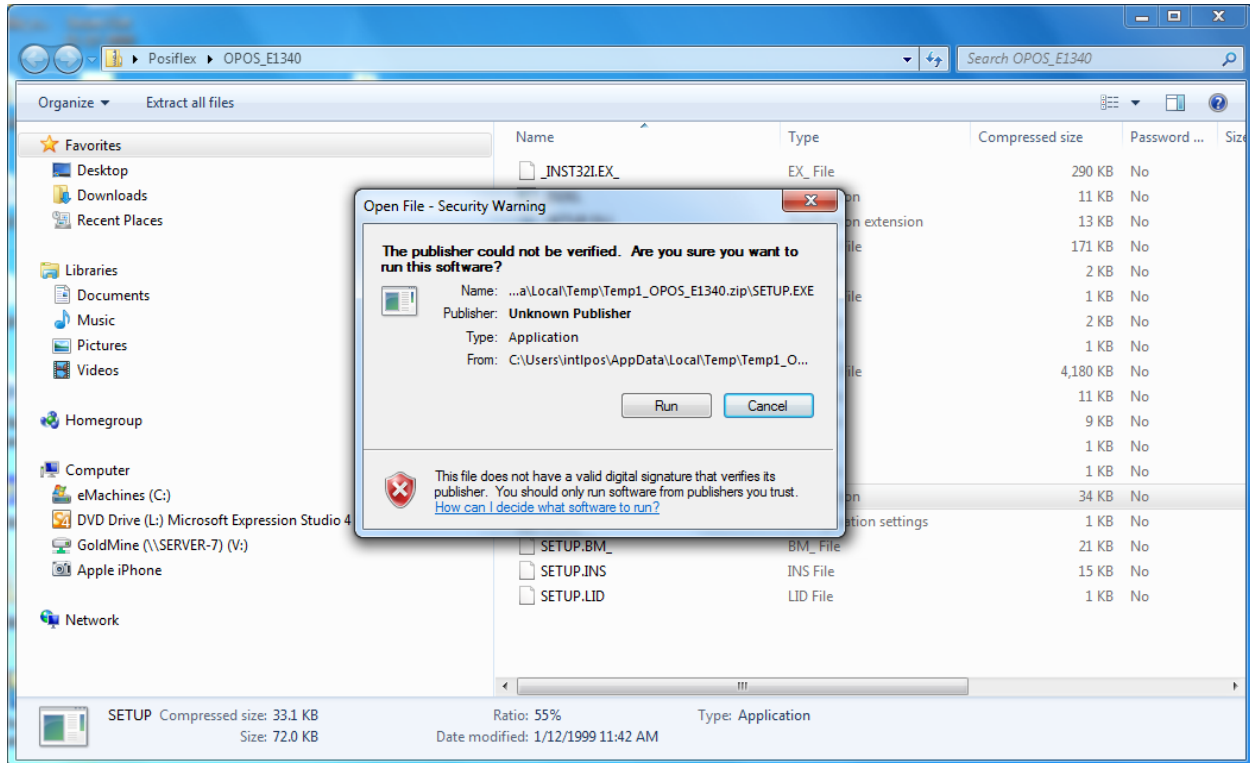


Installing POSIFLEX OPOS Manager and configuring devices

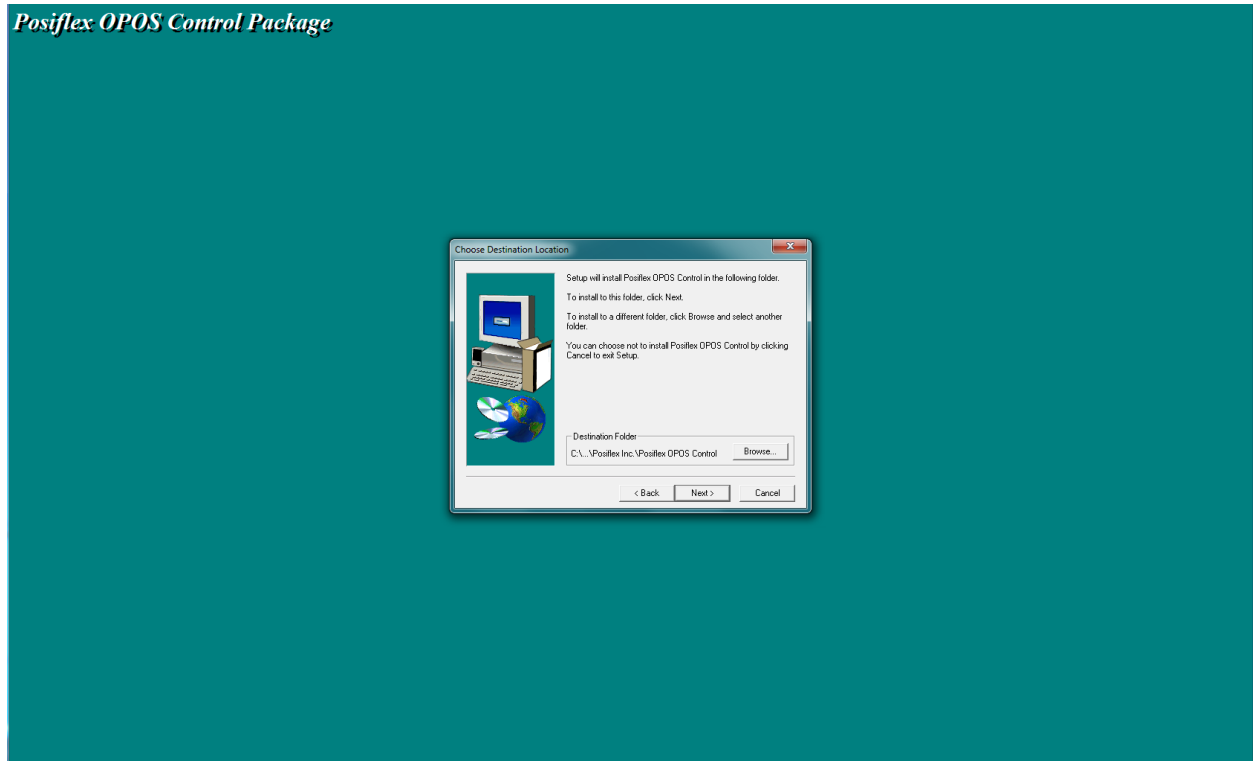
The installer for the Posiflex OPOS Control Manager can be downloaded at:

http://cornerstorepos.com/downloads/hardware/OPOS_POSIFLEX.zip

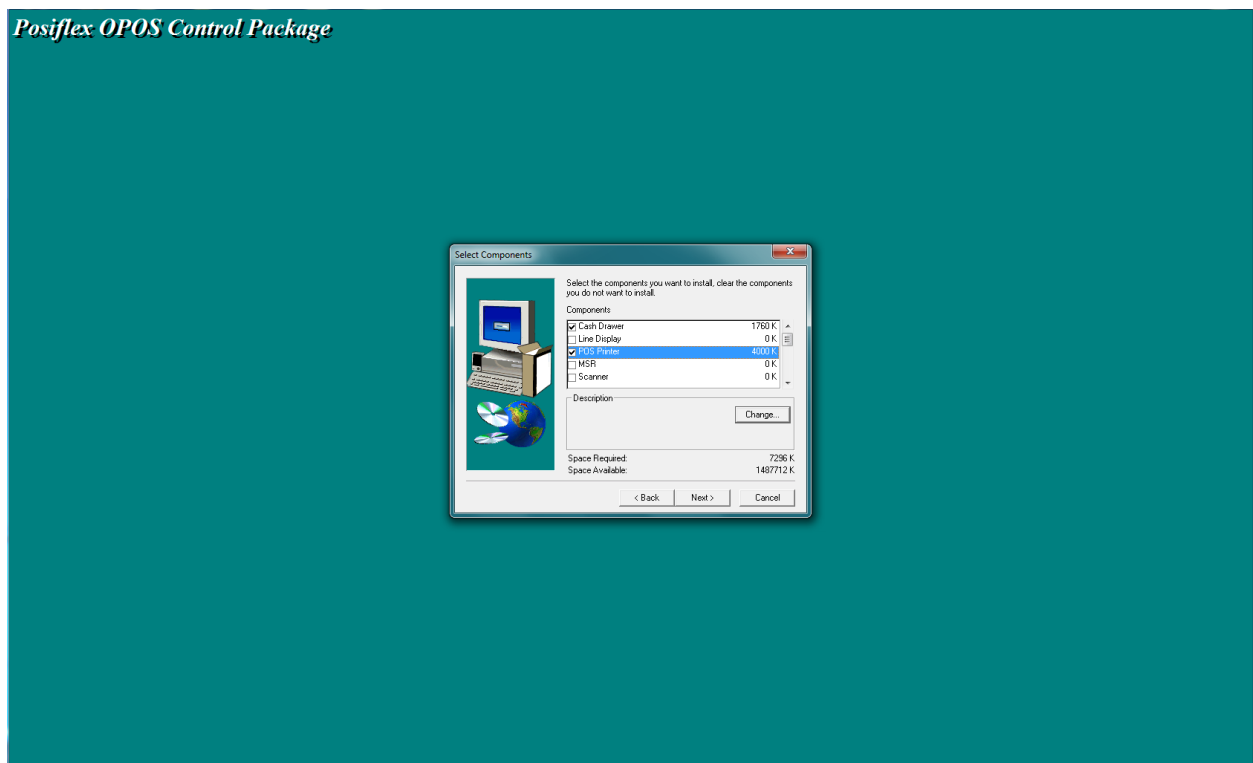
Step 1: Double click **SET UP** (Type: Application) and click on **Run**



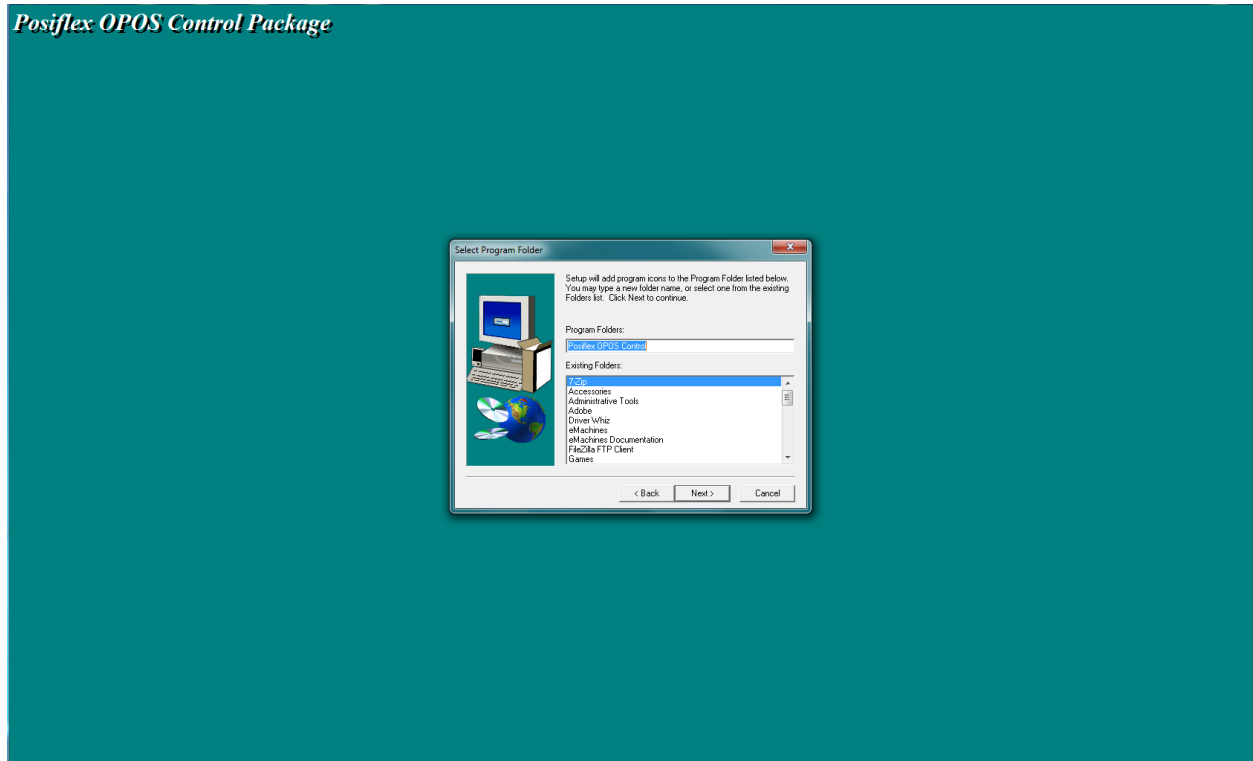
Step 2: Select **Next** when asked to choose a destination location.



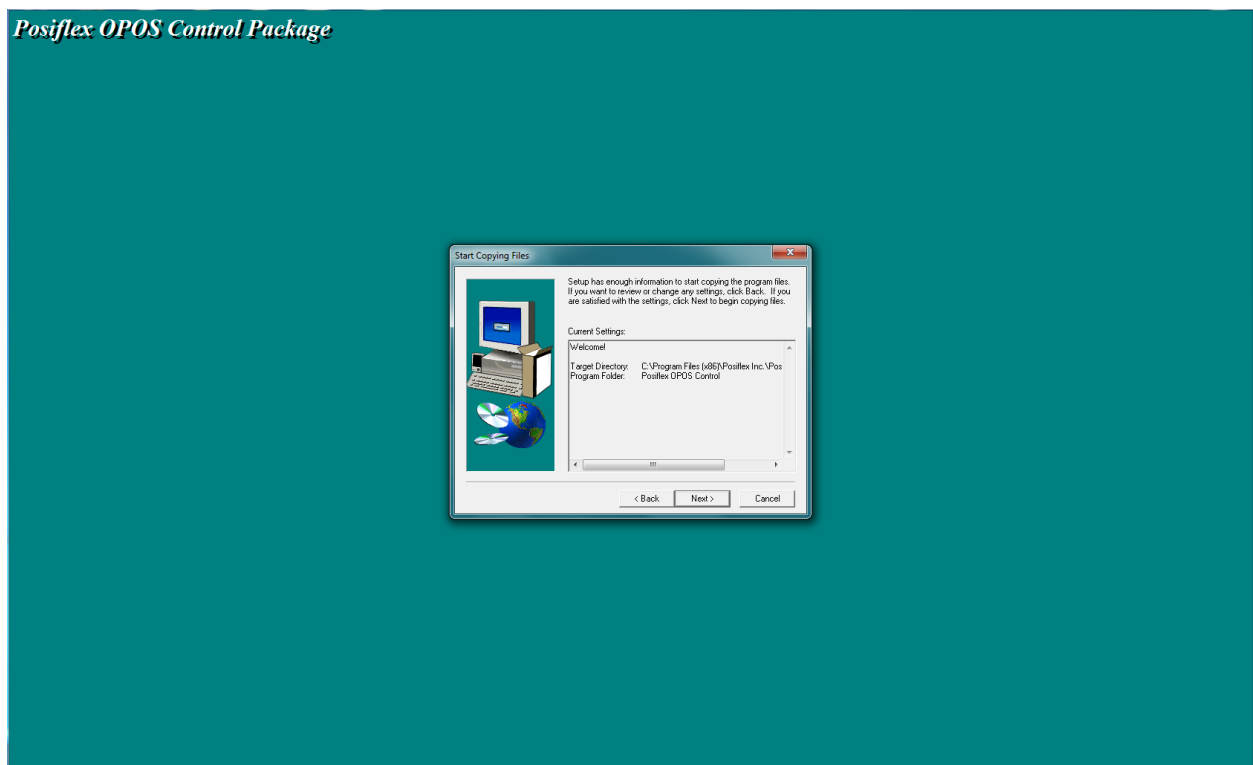
Step 3: Check **POS Printer**, **Cash Drawer** and Select **Next**.



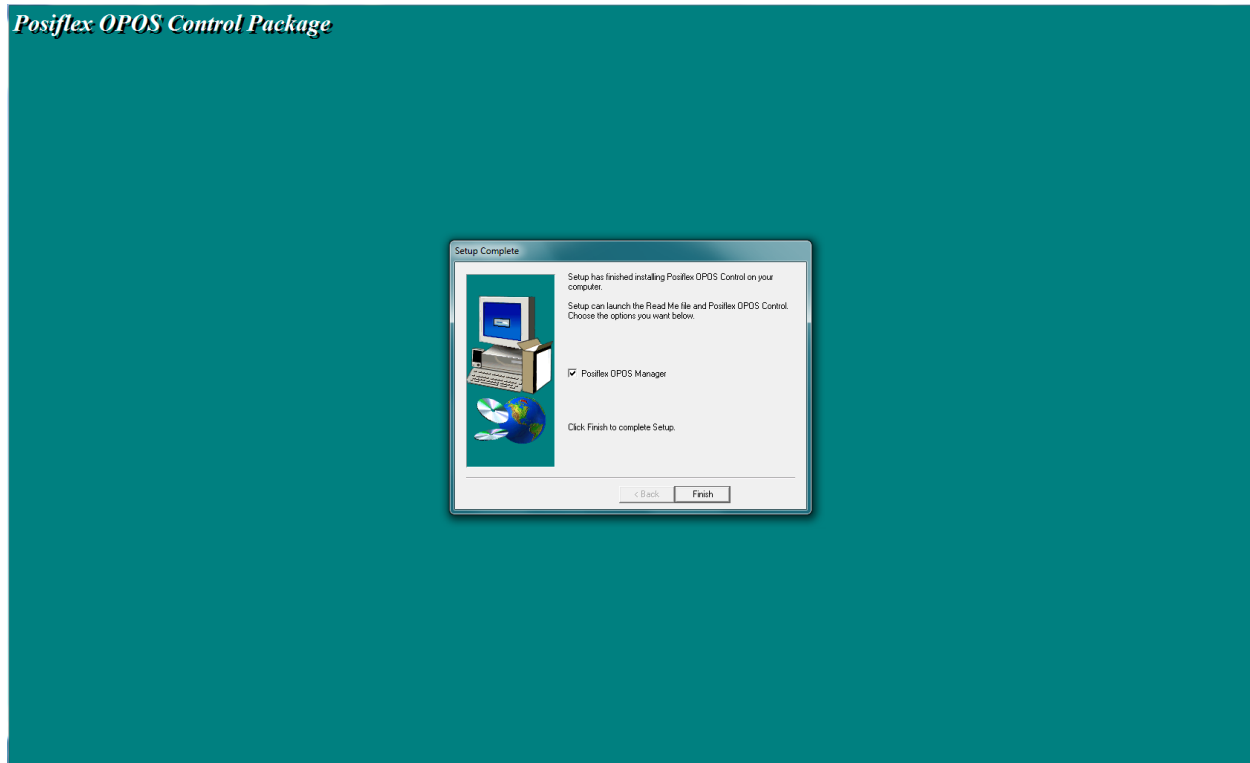
Step 4: Select **Next** when asked to select a program folder.



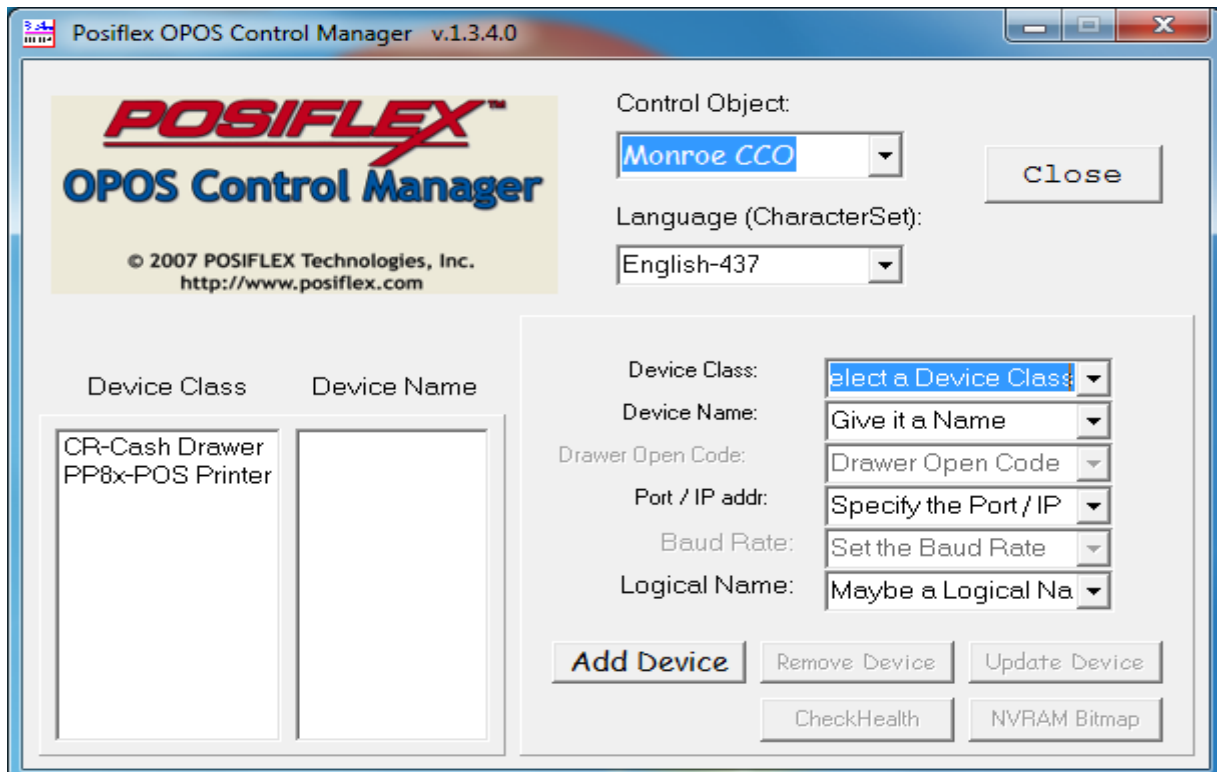
Step 5: Select **Next** in order to start copying files.



Step 6: When set up is complete, select **Finish**.



Step 7: Open Posiflex OPOS Control Manager and you will find **PP8x-POS Printer** and **CR-Cash Drawer** under Device Class.



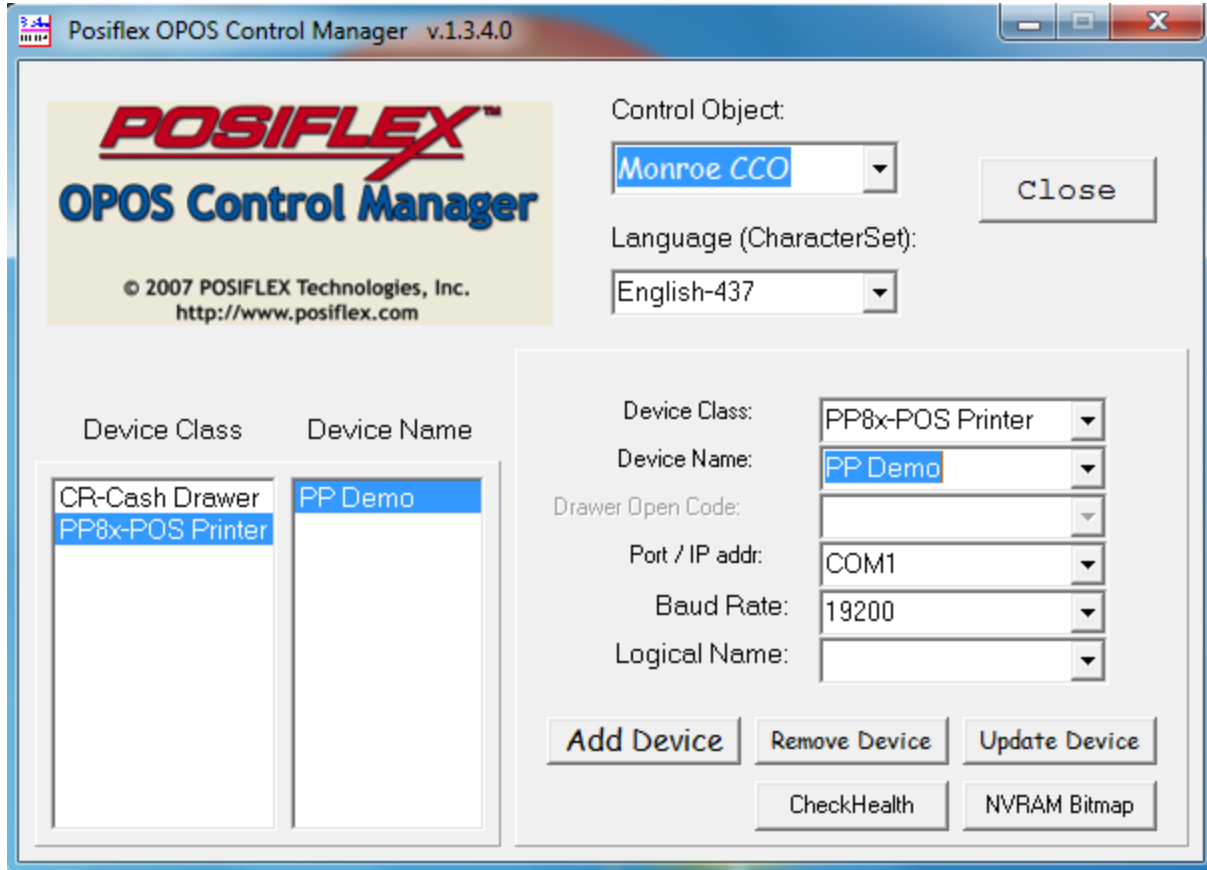
Step 8: Select **PP8x-POS Printer, PP Demo** under **Device Name**.

Step 9: Change the **Device Name** field to **PP – 7000 B**.

Step 10: Change the **Port/IP addr** field to the **COM port** used by the **PP 7000 II**.

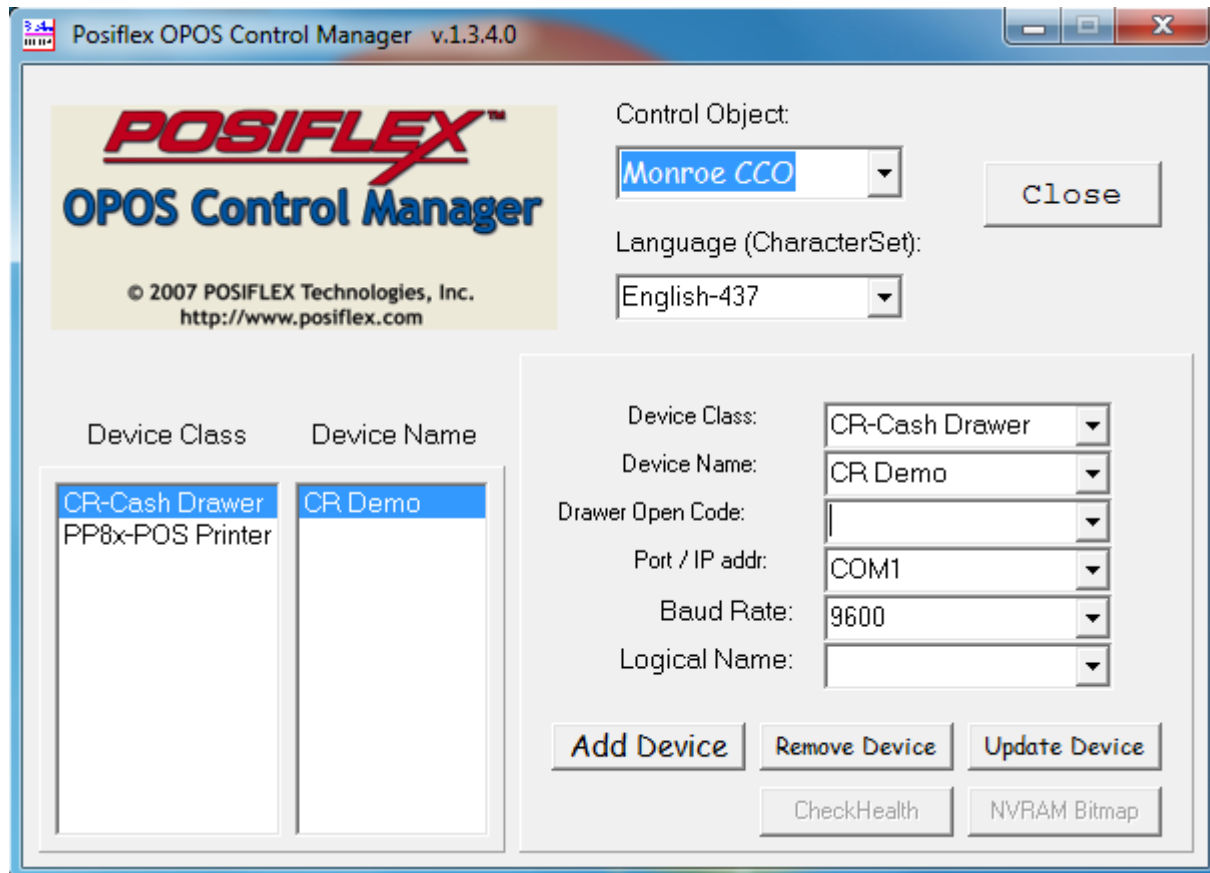
Step 11: Select **Update Device**.

Step 12: Select **Check Health**



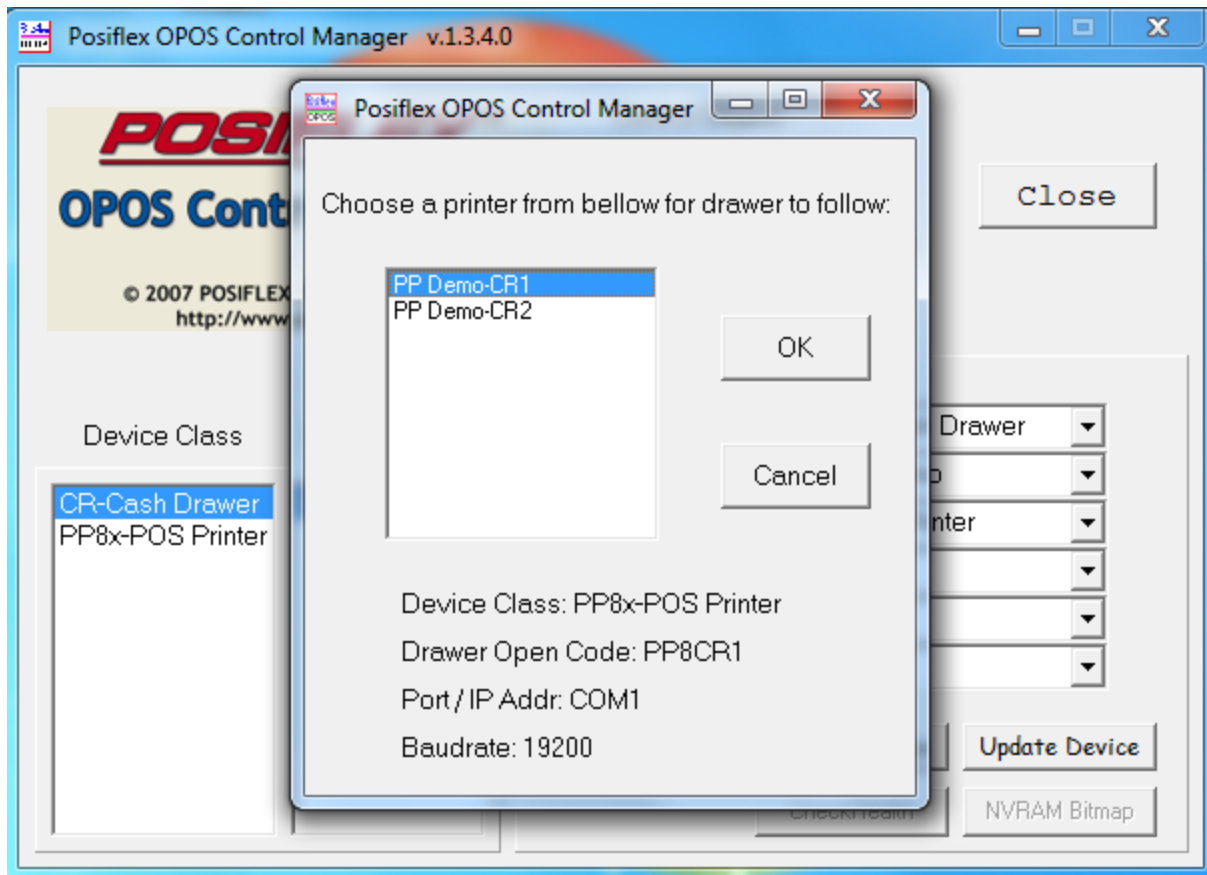
Step 13: Select **CR – Cash Drawer, CR Demo** under **Device Name**.

Step 14: Change **Device Name** to **CR Demo**.



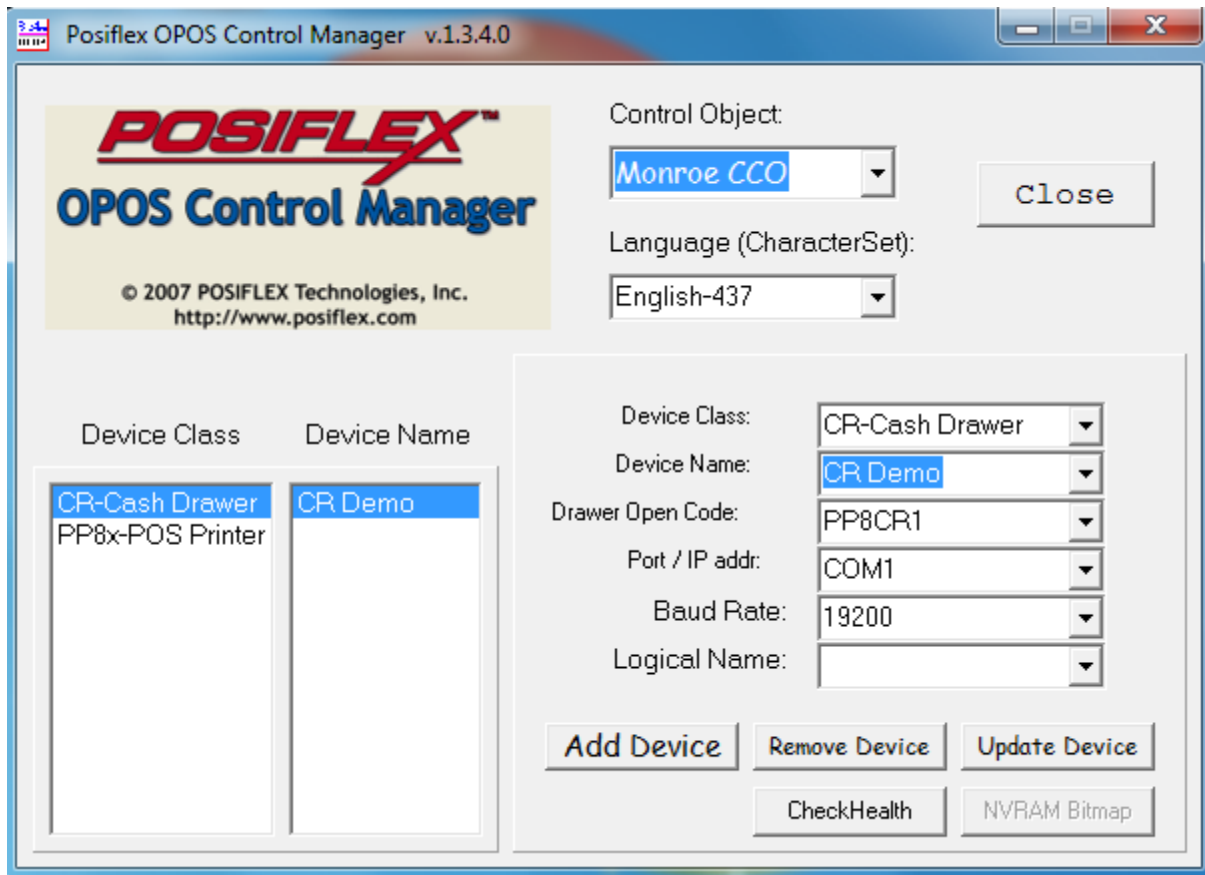
Step 15: Select **follow printer** under **Drawer Open Code**.

Step 16: Select **PP Demo CR1** and click **OK**.



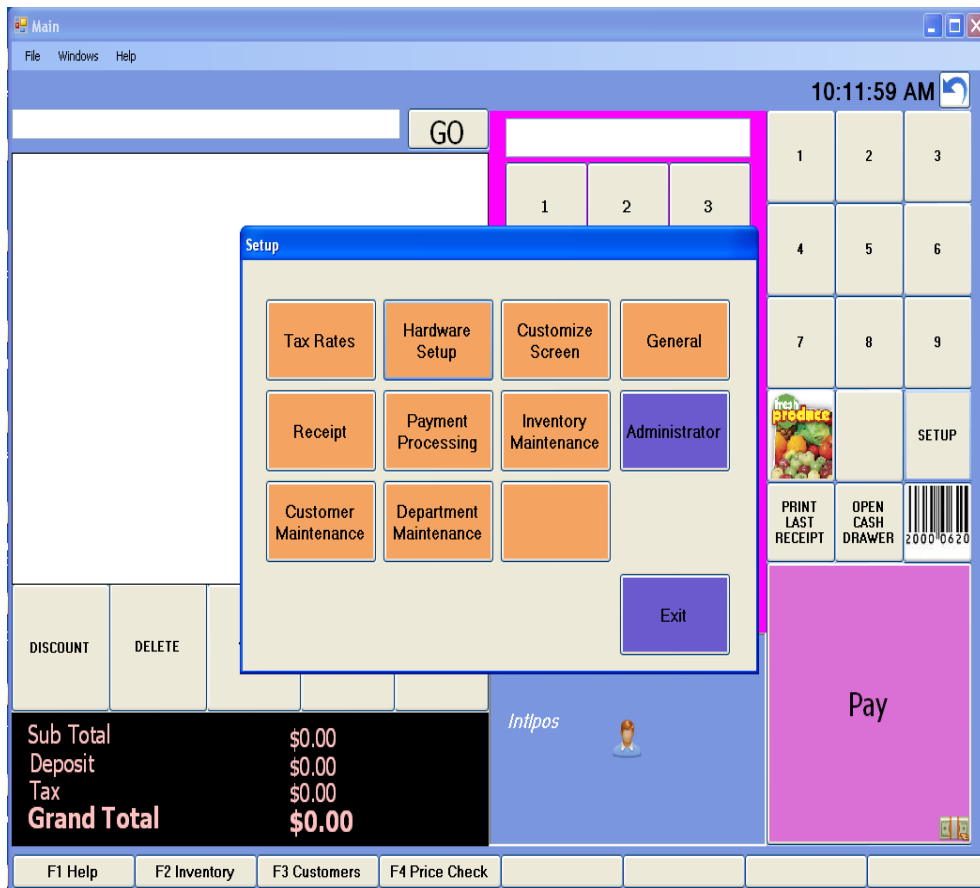
Step 17: Select **Update Device**.

Step 18: Select **Check Health**.



Using Printer and Cash Drawer with Corner Store POS

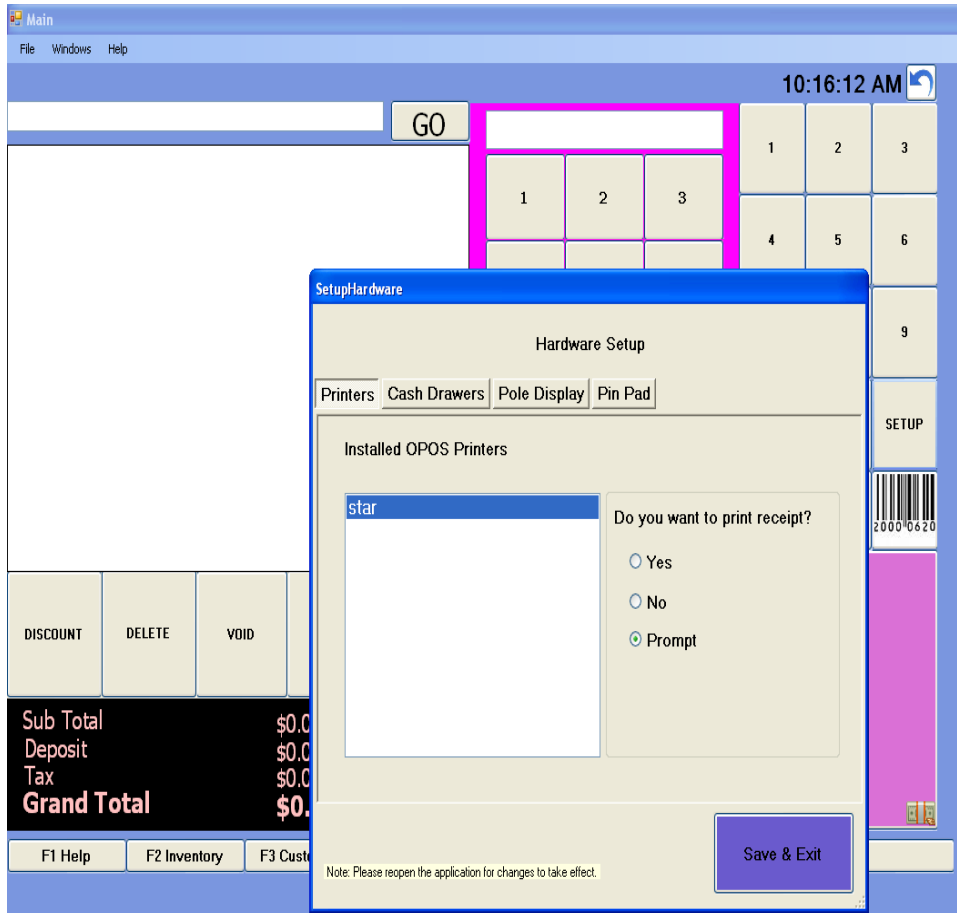
Step 1: Open Corner Store POS>Set Up>Hardware Set up.



Step 2: Within **Hardware Setup** select **Printers** tab.

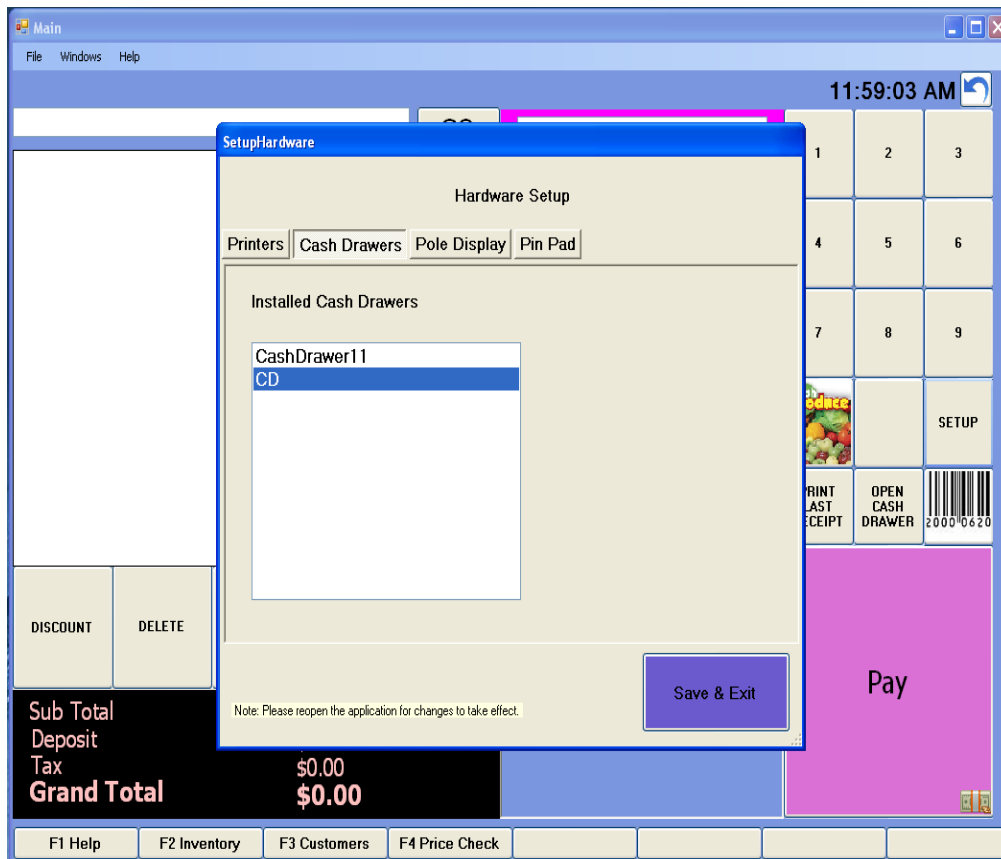
Step 3: Select the name of printer which you had added within **Installed OPOS Printers** list.

Step 4: Select the option (**Yes, No or Prompt**) to print the receipt



Step 5: Select **Cash Drawers** tab.

Step 6: Select the name of cash drawer which you had added within **Installed Cash Drawers** list and then select **Save & Exit**.



To apply changes to take place closed Corner Store and re login.