

Installation instructions for the CITIZEN series CT-S310II printers with Corner Store POS



Corner Store POS supports Citizen series printers. This document will detail the process of installing the correct drivers for the printer and cash drawer and then setting up the printer and the cash drawer in the Corner Store POS.

Installing Appropriate Drivers

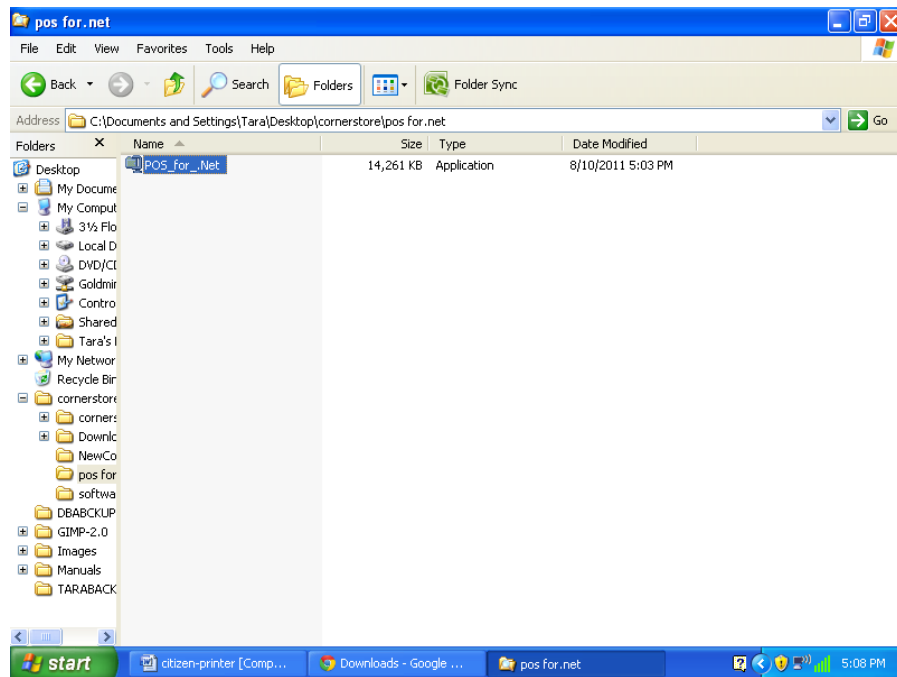
NOTE: Please leave printer disconnected for driver installation!

Installing the POS FOR.NET

1. Go to the website:

http://cornerstorepos.com/downloads/hardware/POS_for_.Net.exe

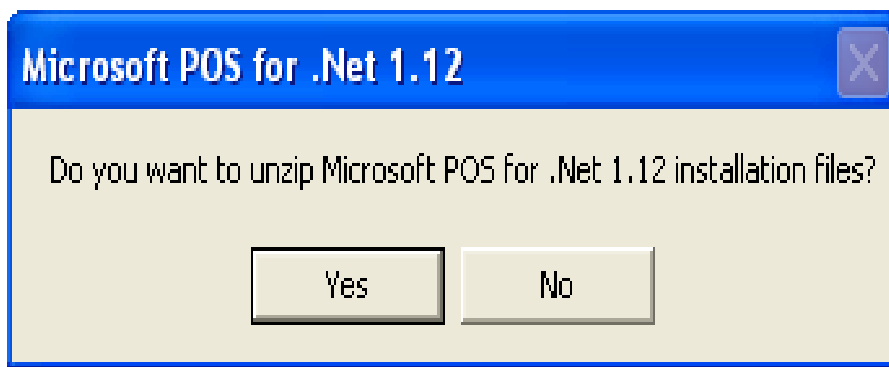
2. Click on the **POS_for_.Net** application.



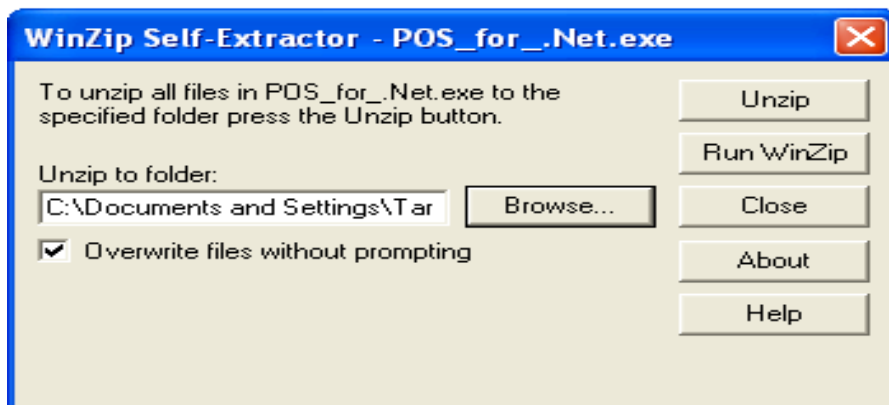
3. Click on **Run**.



4. Click on **Yes**.



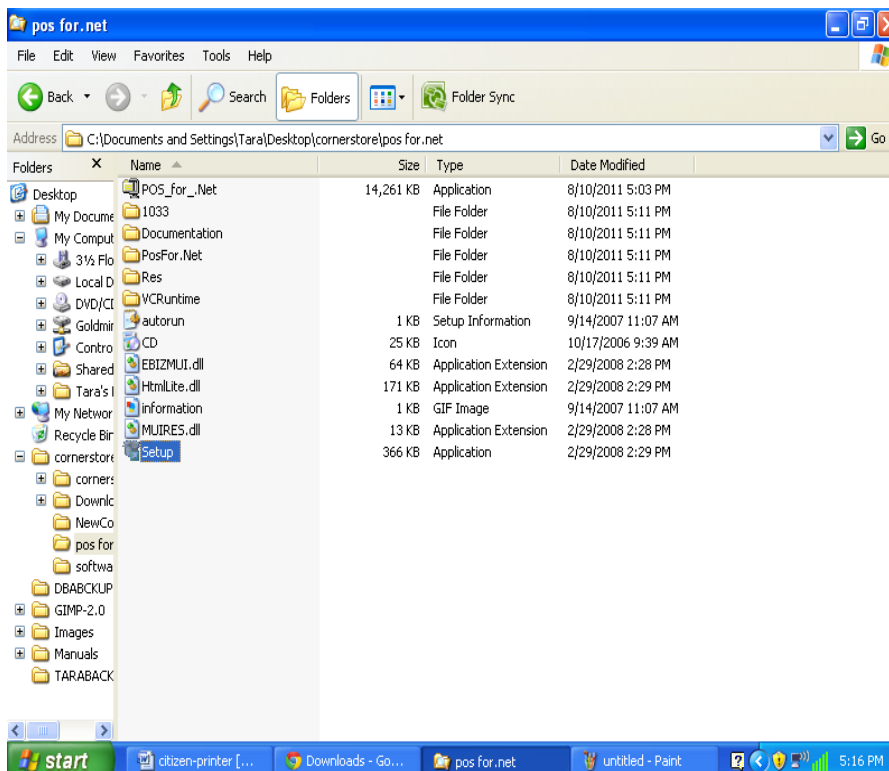
5. Select the folder where you want to unzip the file and click on **Unzip**.



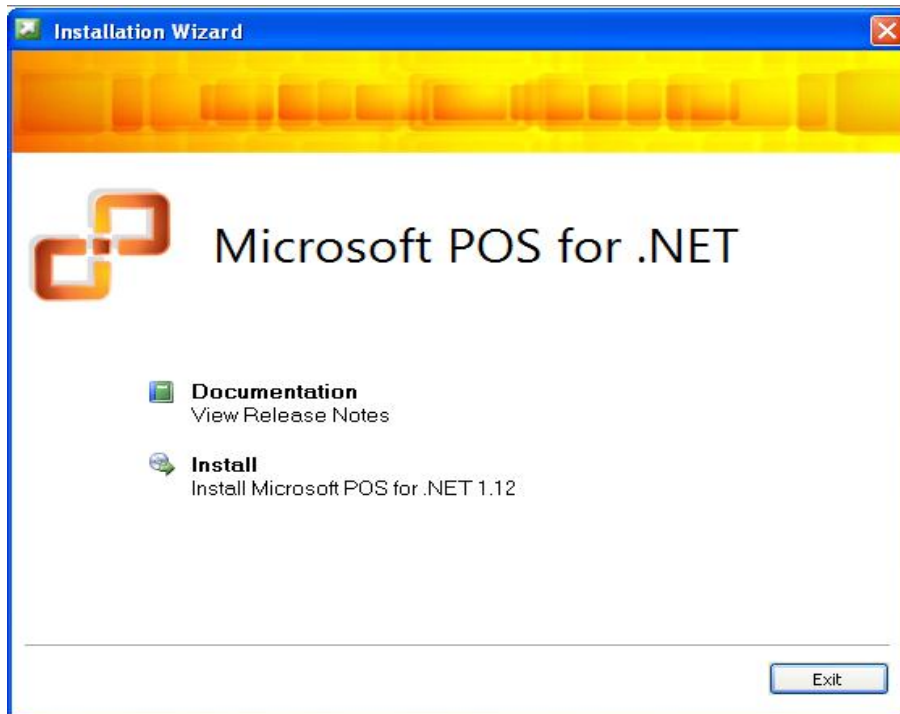
6. Now click on **OK**. And, then click on **Close**.



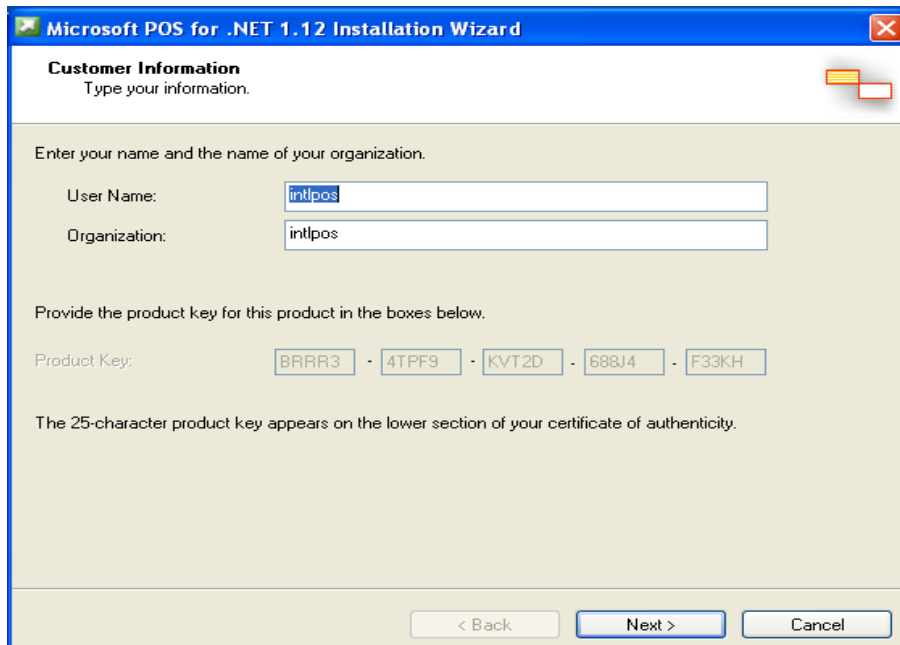
7. Now, go to the folder where you saved your file and look for **setup.exe** file and click on it.



8. Click on **Install**.

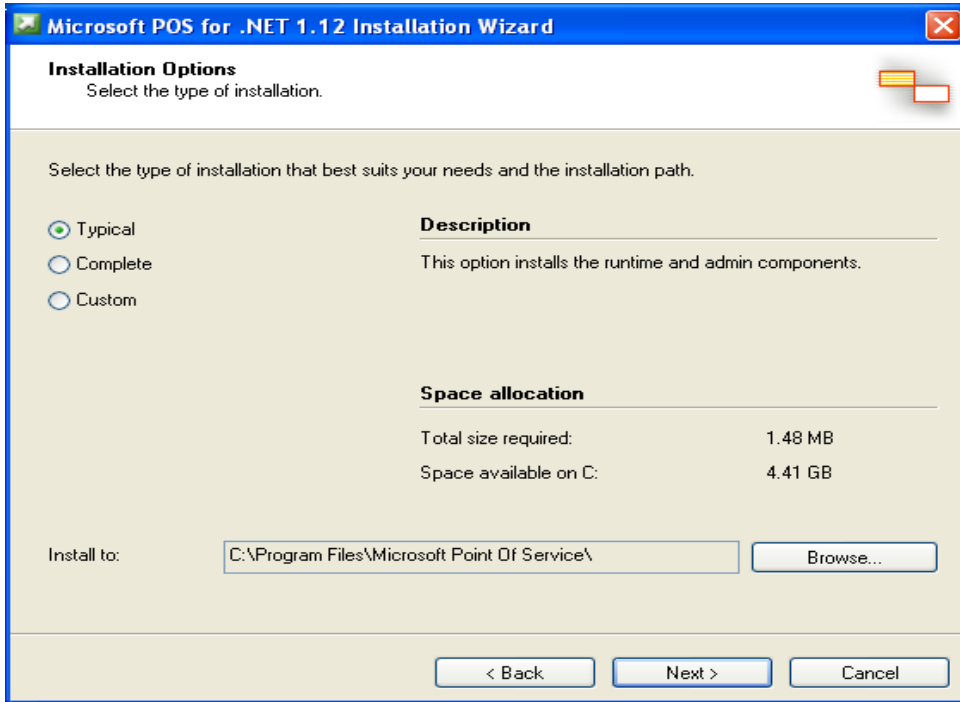


9. Enter **User Name** and **Organization** and select **Next**.

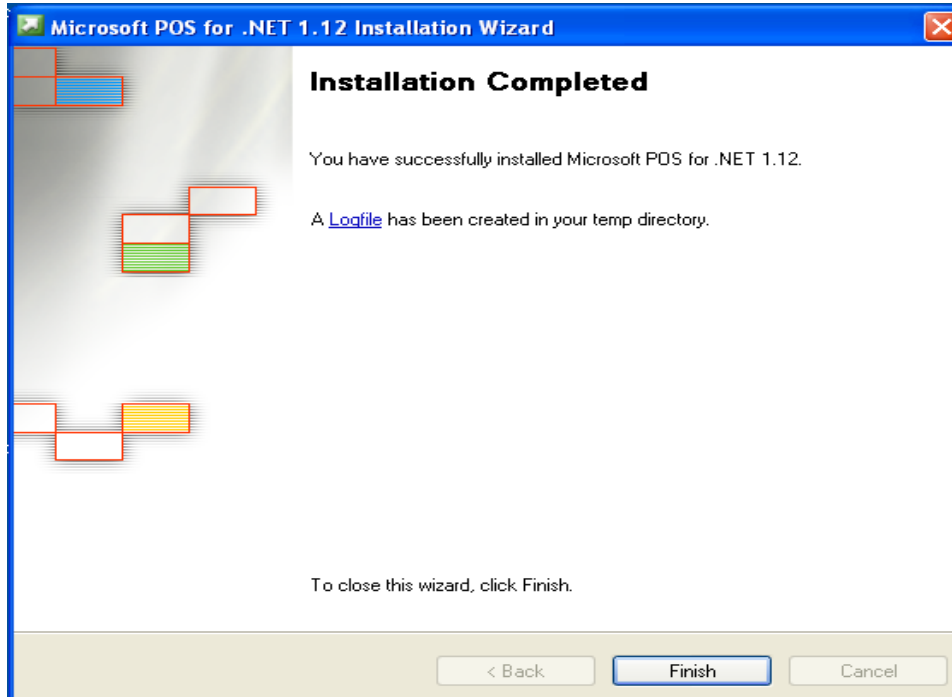


4. Select **Accept**.

5. Select **Typical** and then **Next**.



6. Select **Install** and then **Finish**.



Now, OPOS driver for Citizen Printer has been downloaded and installed.

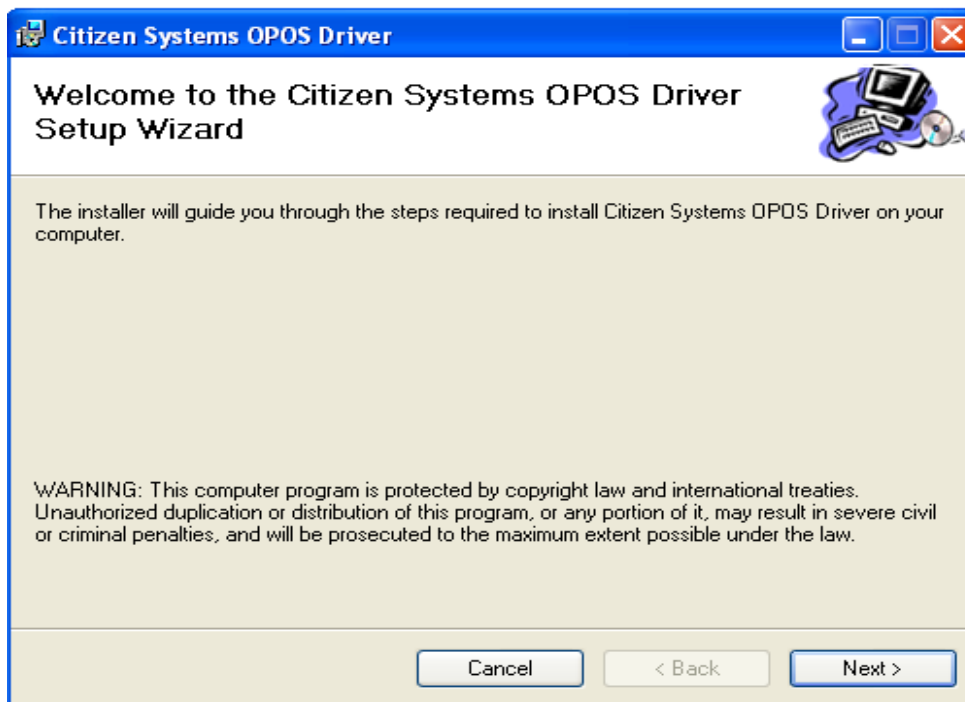
1. Download driver from

http://www.cornerstorepos.com/downloads/hardware/Citizen%20310%20II_OPOS_V1.13.1.3.EXE

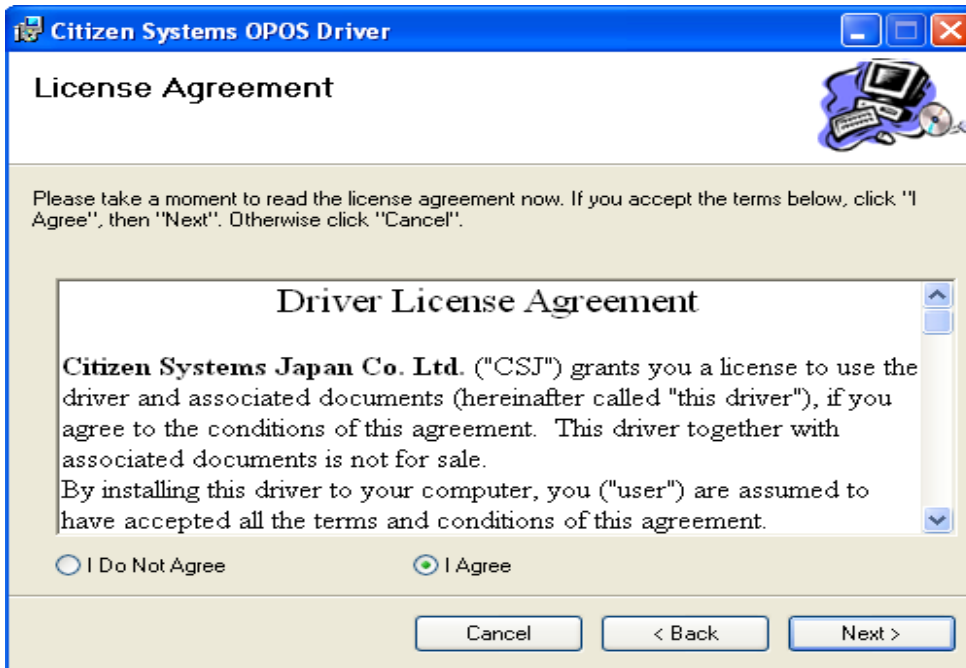
2. Now run the executable.



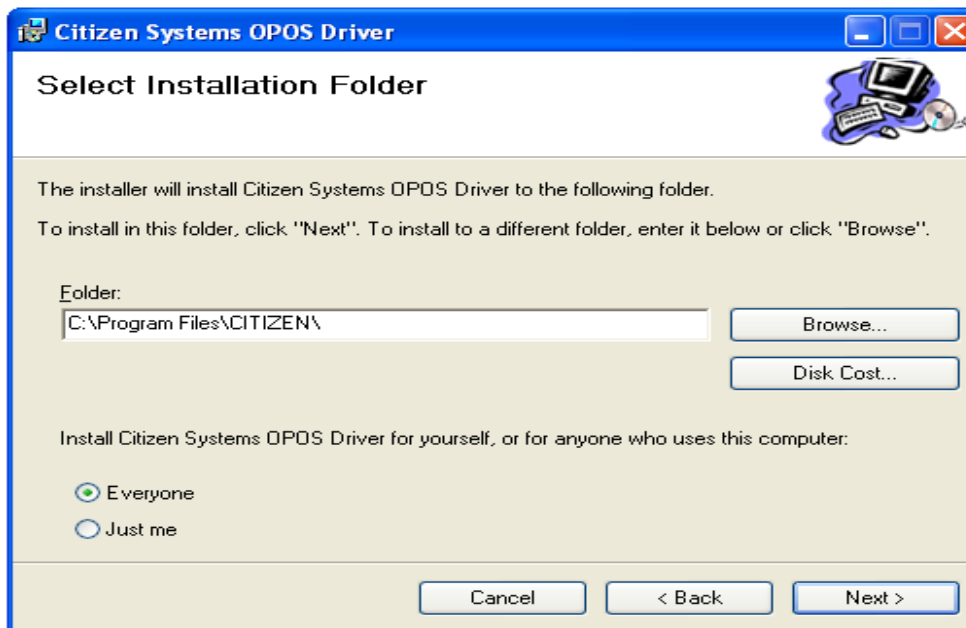
3. Click on **Next**.



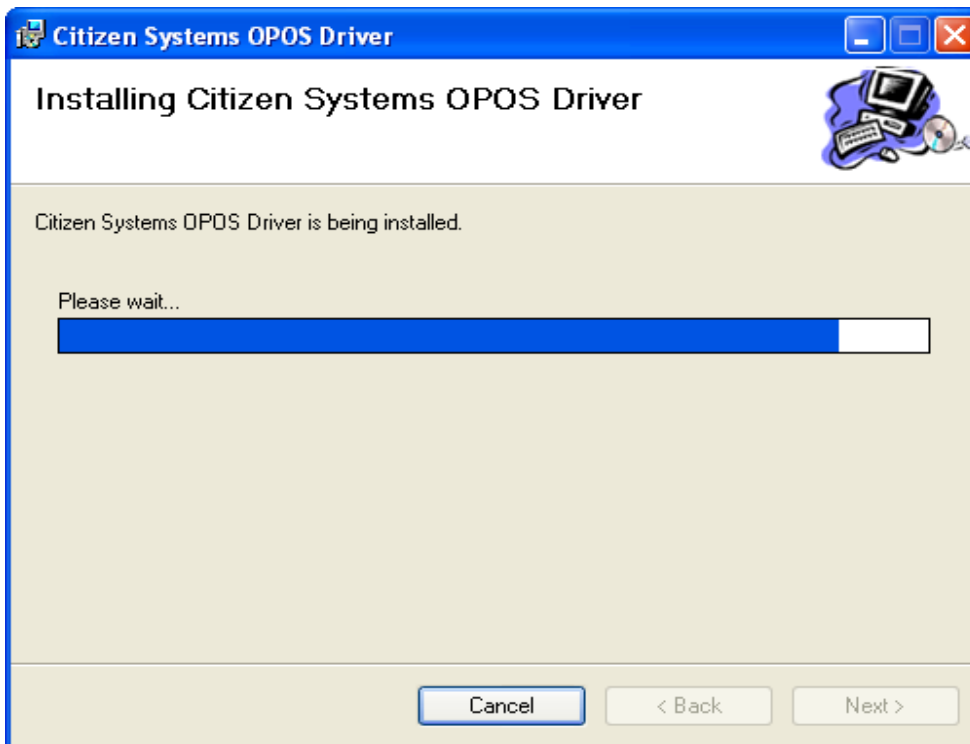
4. Select **I Agree** and click on **Next**.



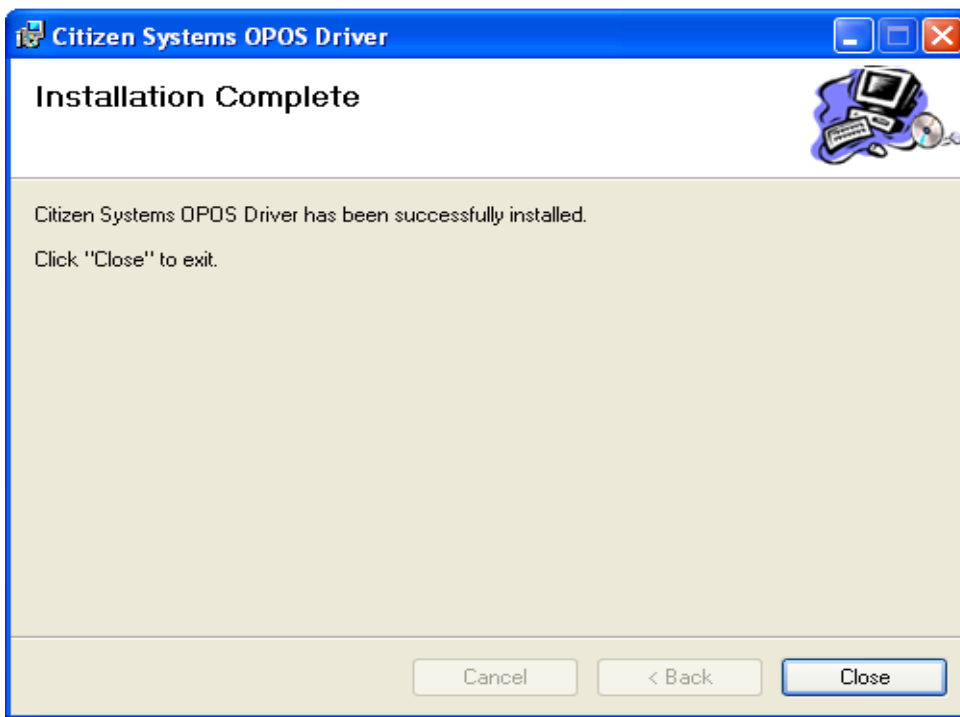
5. Select everyone and click on **Next**.



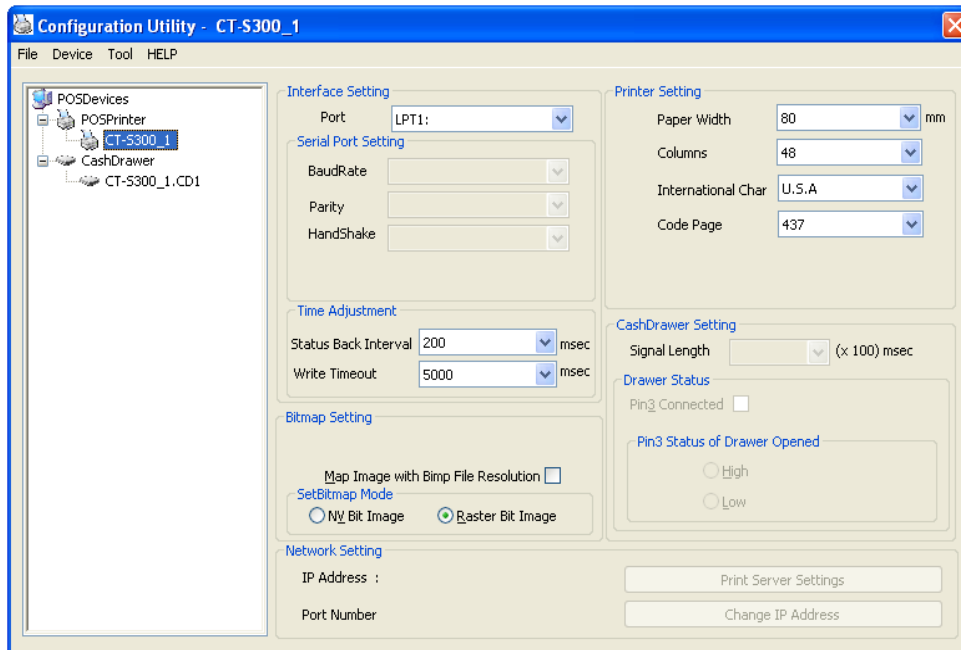
6. Installing OPOS driver.



7. After the successful installation, click on **Close**.

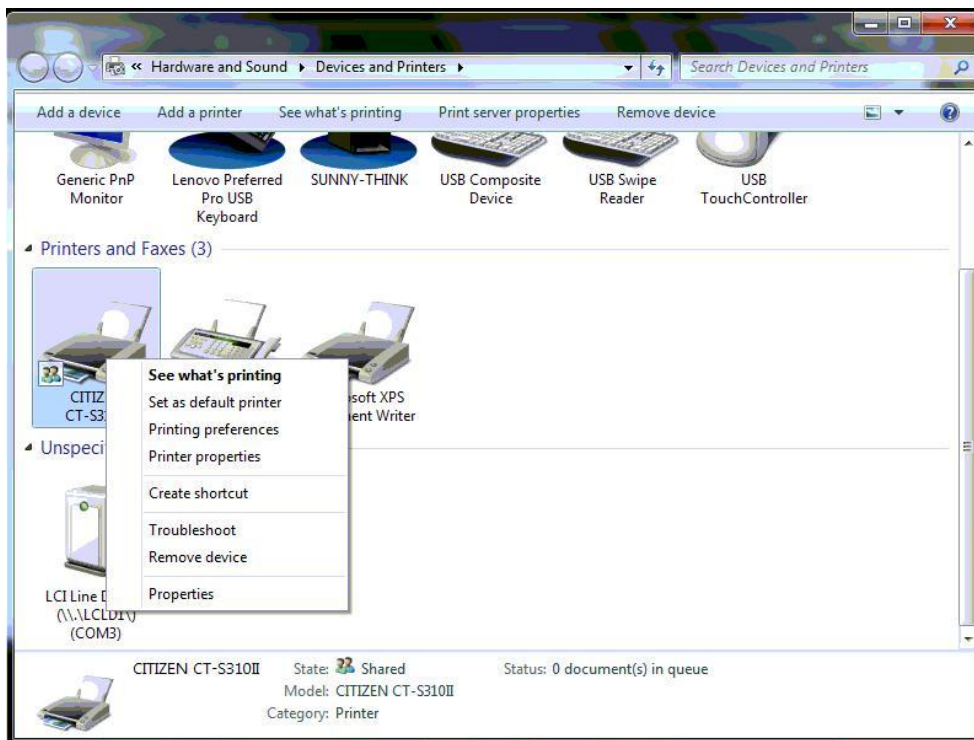


8. Now, go to **Start > All programs > Citizen Systems > Configuration Utility**. You see that the printer CT-S310 II is added.

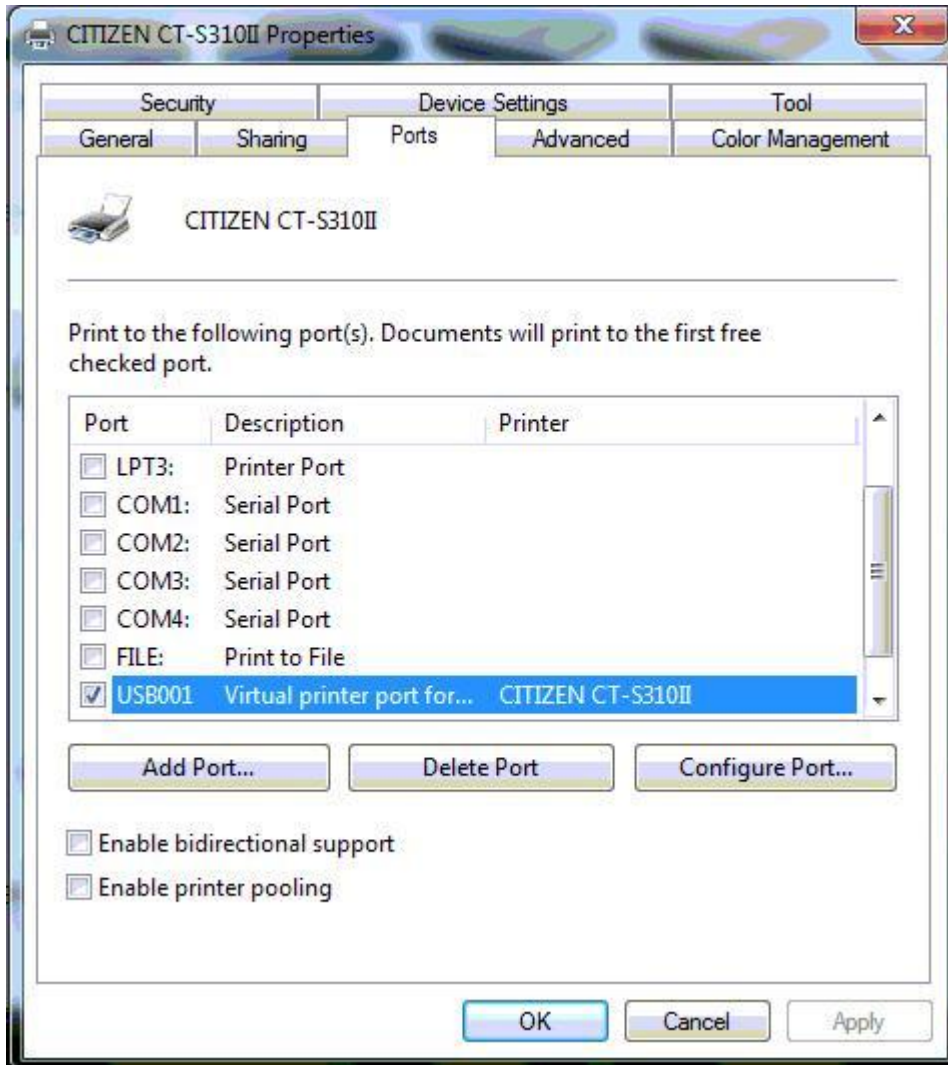


Now close the window

Go to **Start -> Devices and Printers**, right click on the **Citizen Printer** and select **Printer properties**.

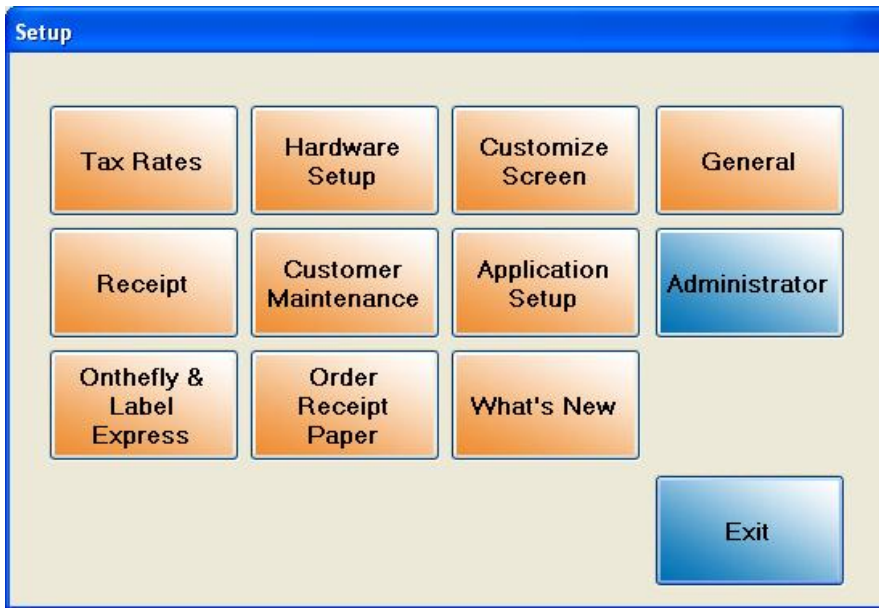


Go to the **Ports** tab and **DESELECT (Uncheck) Enable Bidirectional Support**.

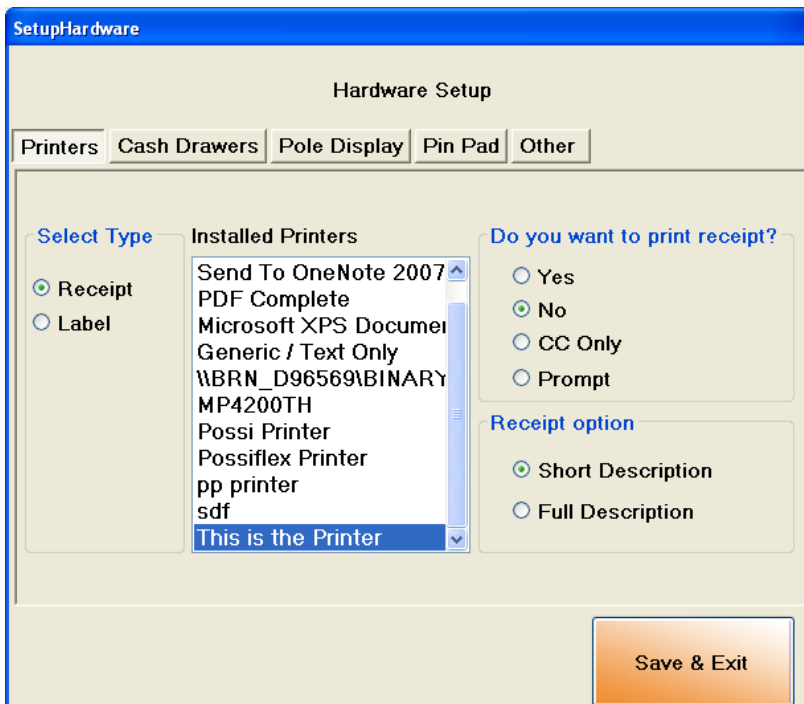


Using Printer and Cash Drawer with Corner Store POS

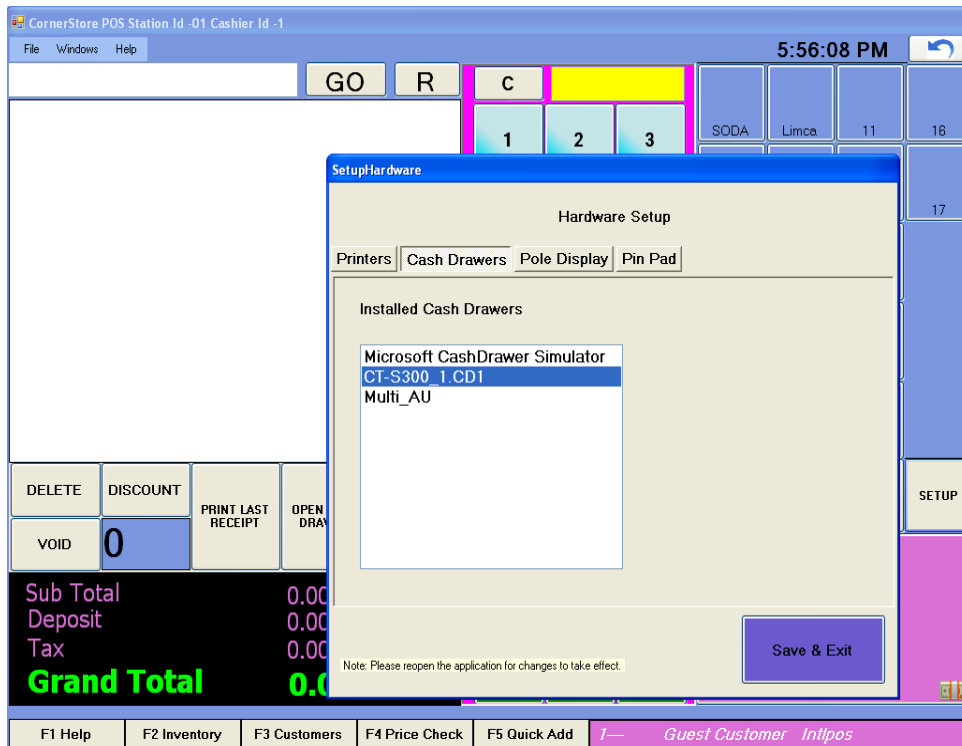
1. Open **Corner Store POS>Set Up>Hardware Set up.**



2. Within Hardware Setup select **Printers tab**, select **Receipt**, then select the name of printer which you had added within installed OPOS Printers list.



4. Select the option (Yes, No or Prompt) to print the receipt and then select **Save & Exit**.
5. Select **Cash Drawers** tab.
6. Select the name of cash drawer which you had added within Installed Cash Drawers list and then select **Save & Exit**.



7. To apply changes to take place close Corner Store and re login.