

# INTERNATIONAL POINT OF SALE

## Installation instructions for the CITIZEN series CT-S300/CT-S310 printers with Corner Store POS



Corner Store POS supports Citizen series printers. This document will detail the process of installing the correct drivers for the printer and cash drawer and then setting up the printer and the cash drawer in the Corner Store POS.

## Installing Appropriate Drivers

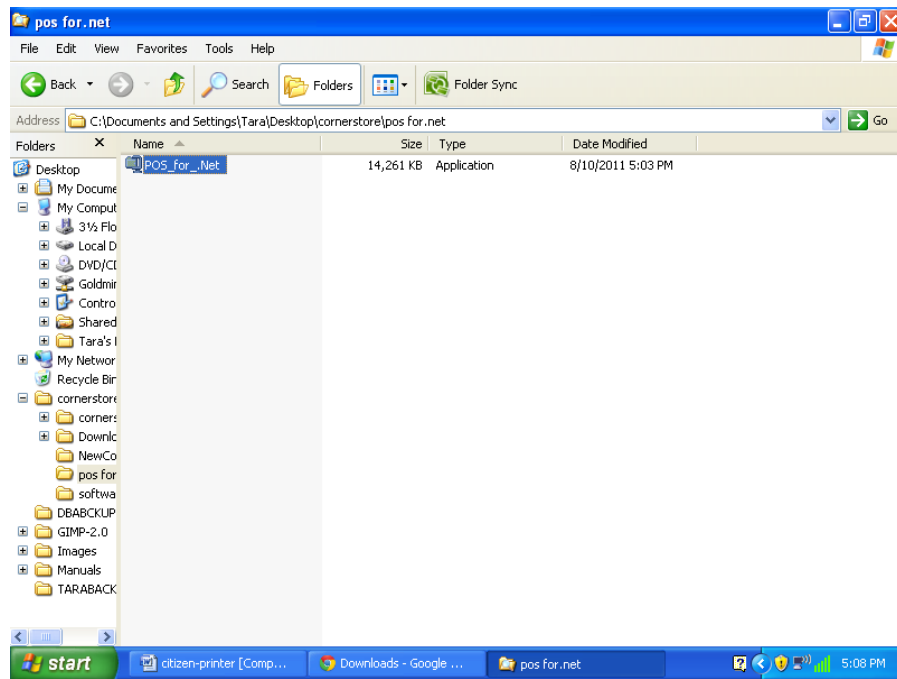
**NOTE: Please leave printer disconnected for driver installation!**

### Installing the POS FOR NET

1. Go to the website

[http://cornerstorepos.com/downloads/hardware/POS\\_for\\_.Net.exe](http://cornerstorepos.com/downloads/hardware/POS_for_.Net.exe)

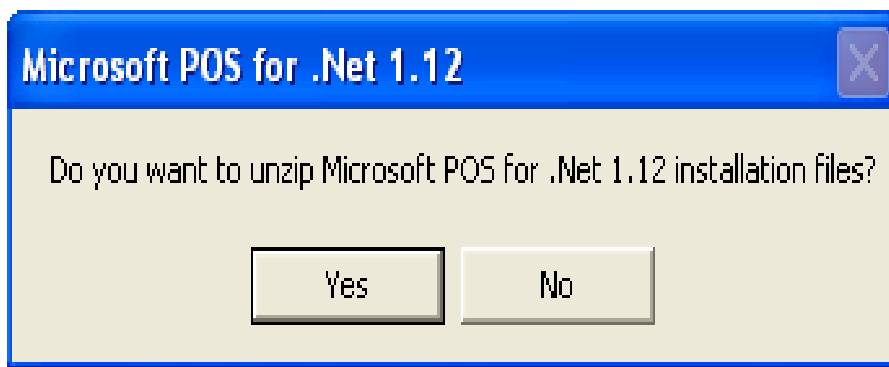
2. Click on the **POS\_for\_.Net** application.



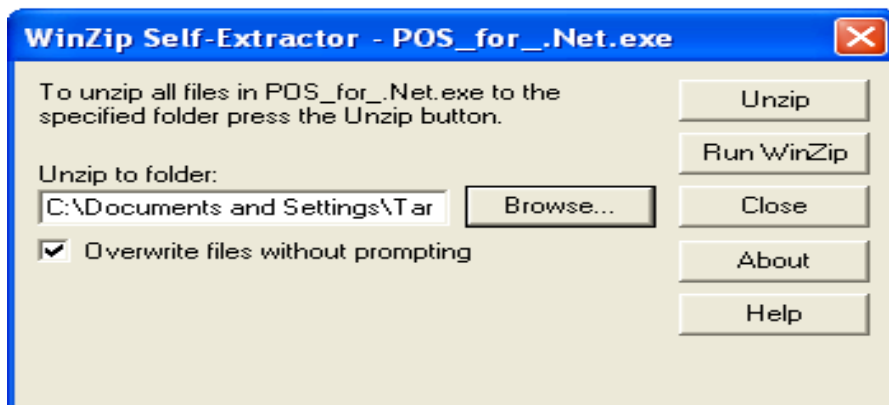
3. Click on **Run**



4. Click on **Yes**.



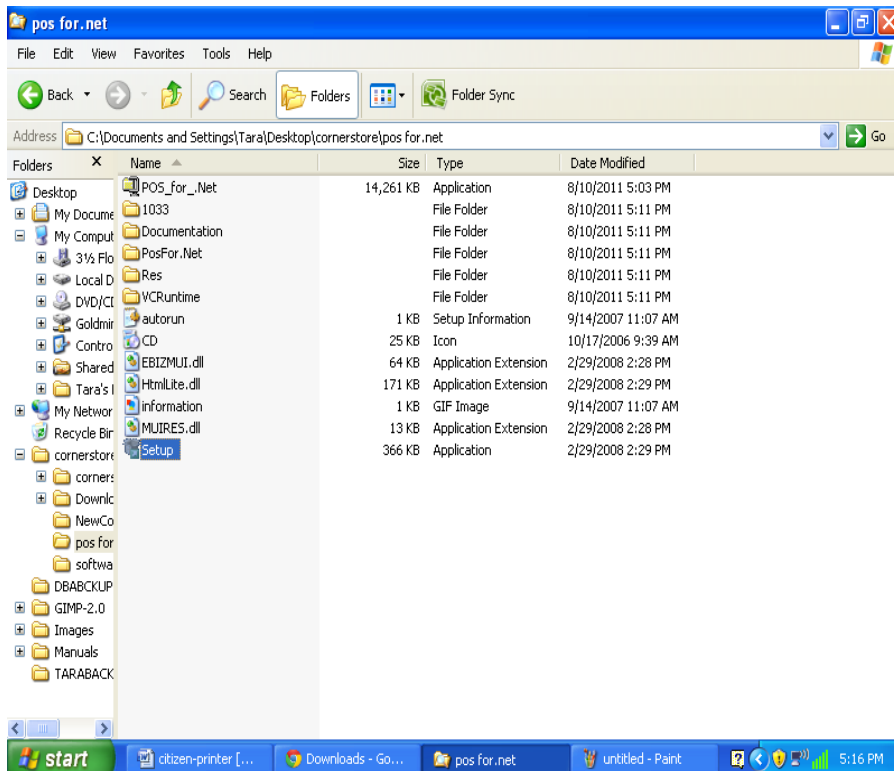
5. Select the folder where you want to unzip the file and click on **Unzip**



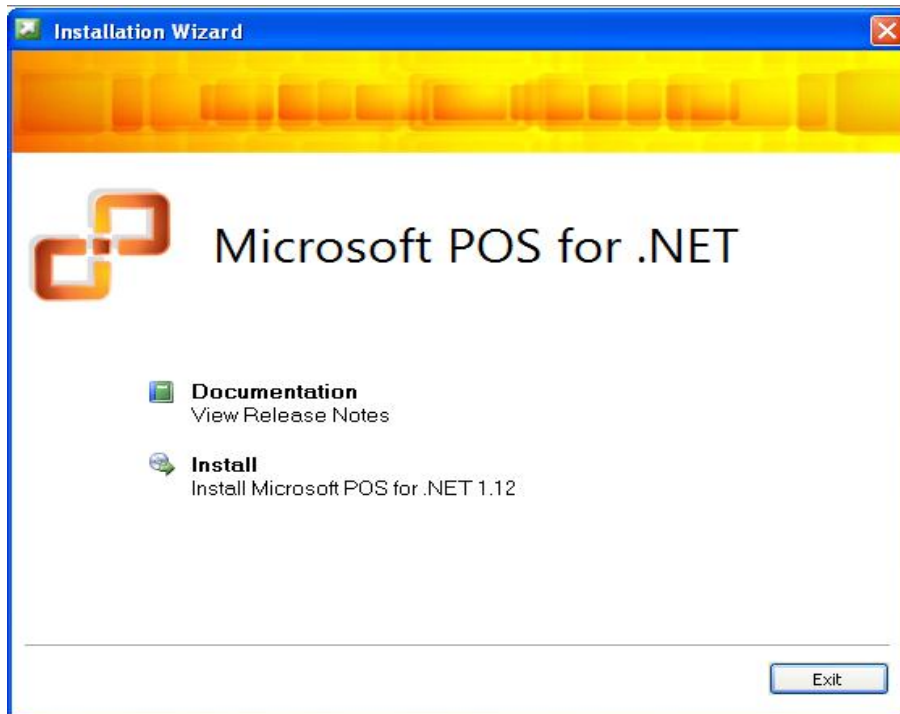
6. Now click on **OK** And then click on **Close**



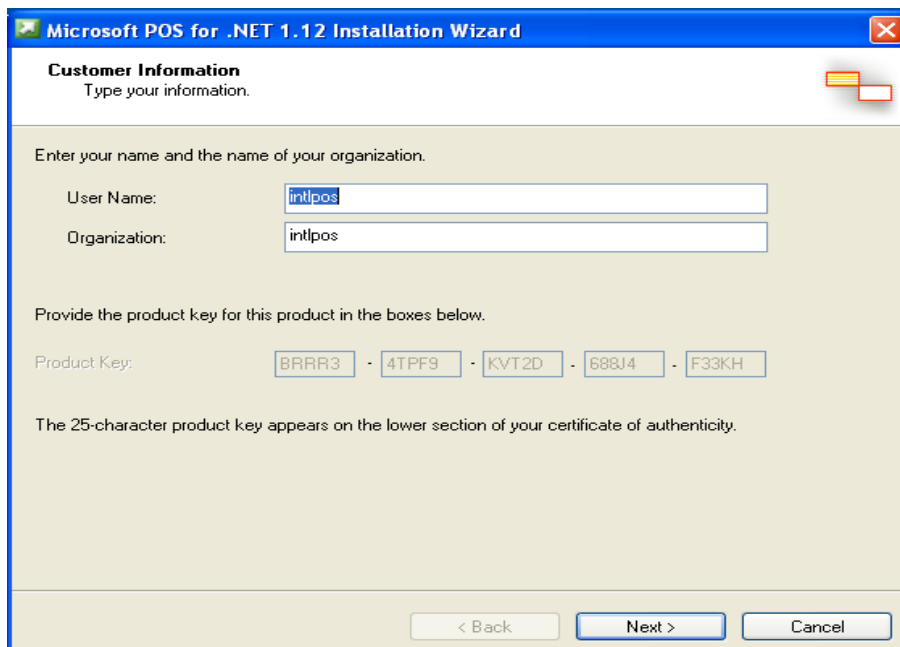
7. Now go to the folder where you saved your file and look for **set up exe** file and click on it.



8. Click on **Inst dl.**

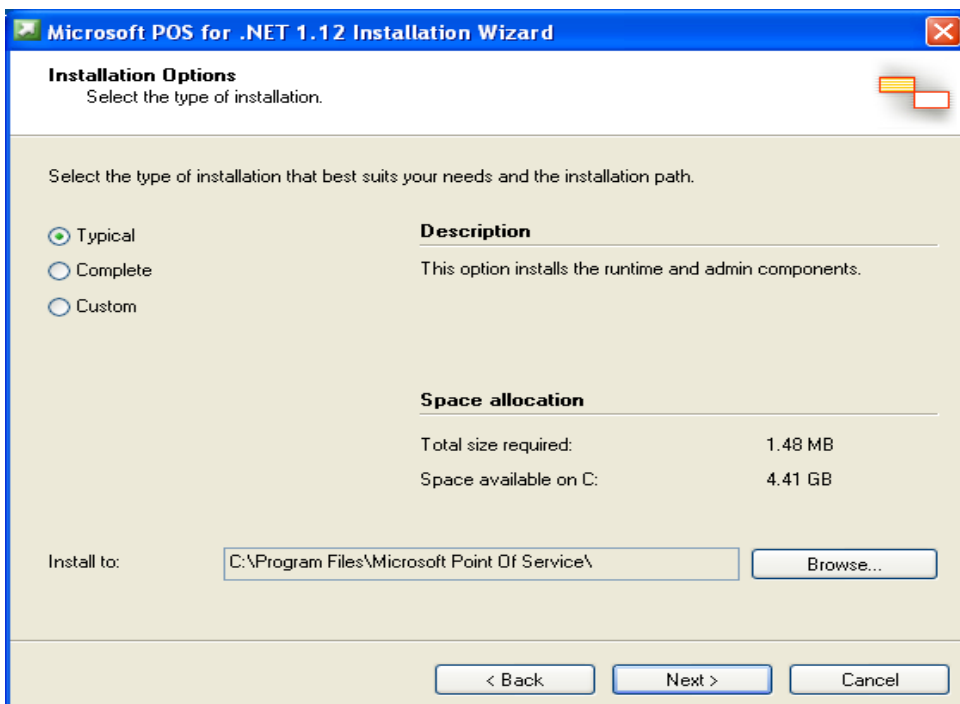


9. Enter **User Name** and **Organization** and select **Next**.

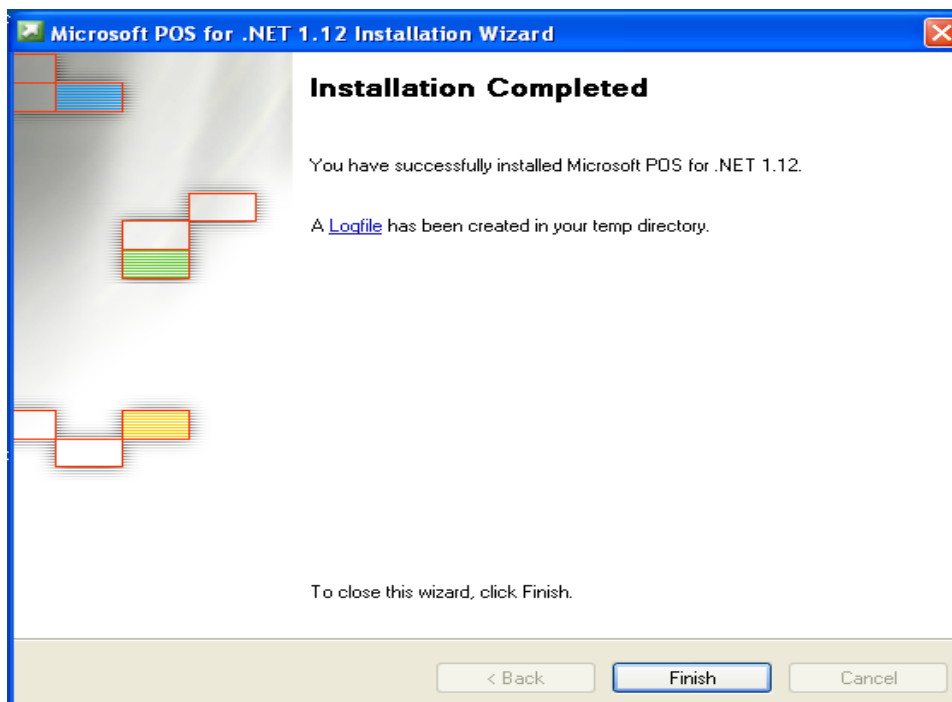


4. Select **Accept**.

5. Select **Typical** and then **Next**.



6. Select **Install** and then **Finish**.



## Now OPOS driver for Citizen Printer has been downloaded and installed

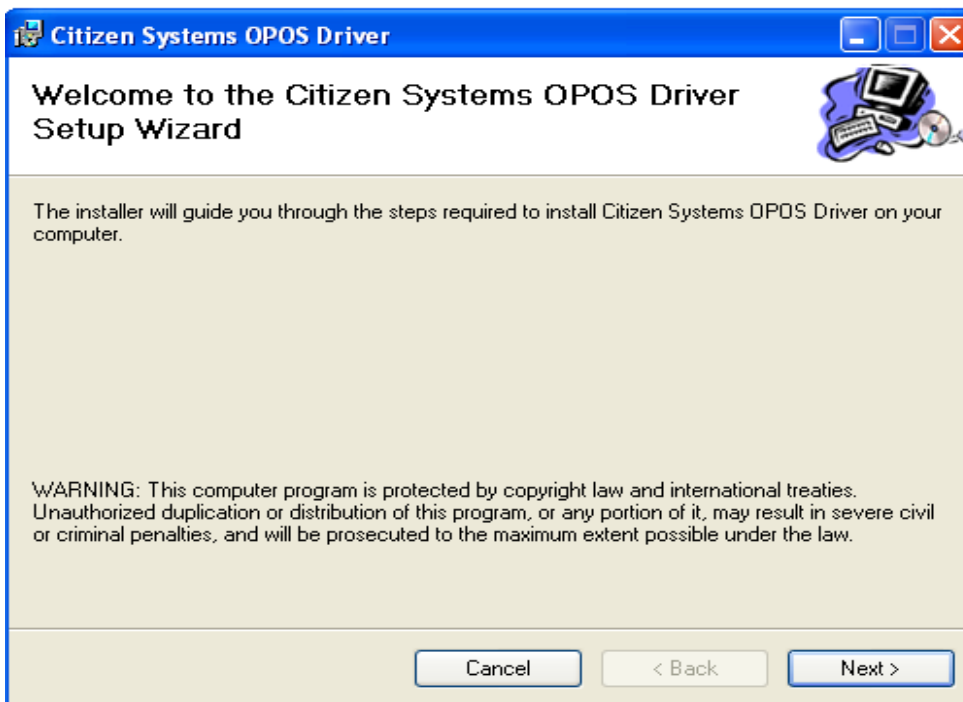
1. Download driver from

[http://www.cornerstorepos.com/downloads/hardware/CT%20S300\\_S310%20OPOS\\_V1844.EXE](http://www.cornerstorepos.com/downloads/hardware/CT%20S300_S310%20OPOS_V1844.EXE)

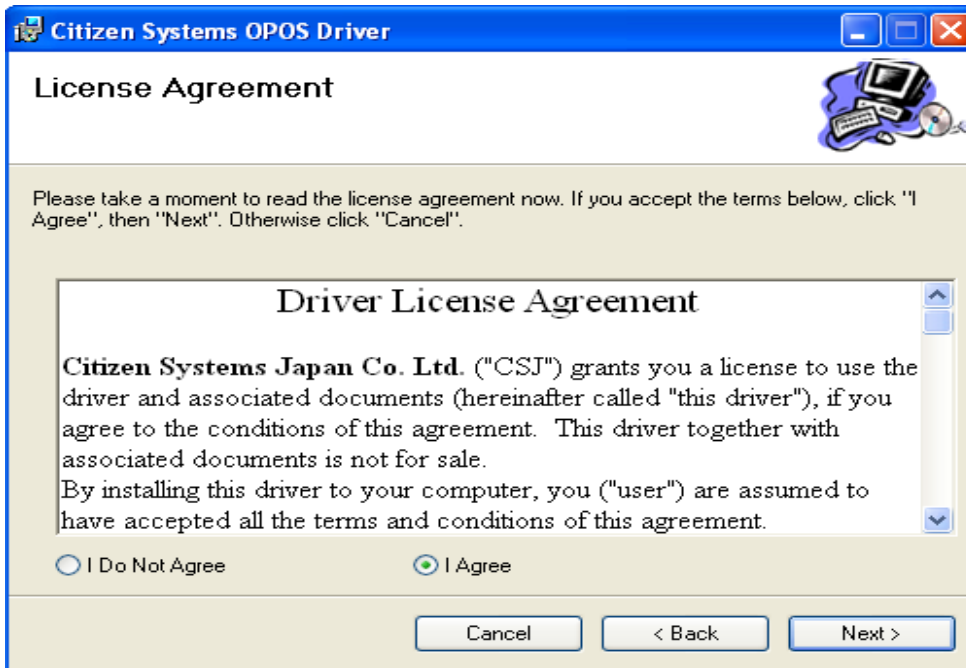
2. Now run the executable



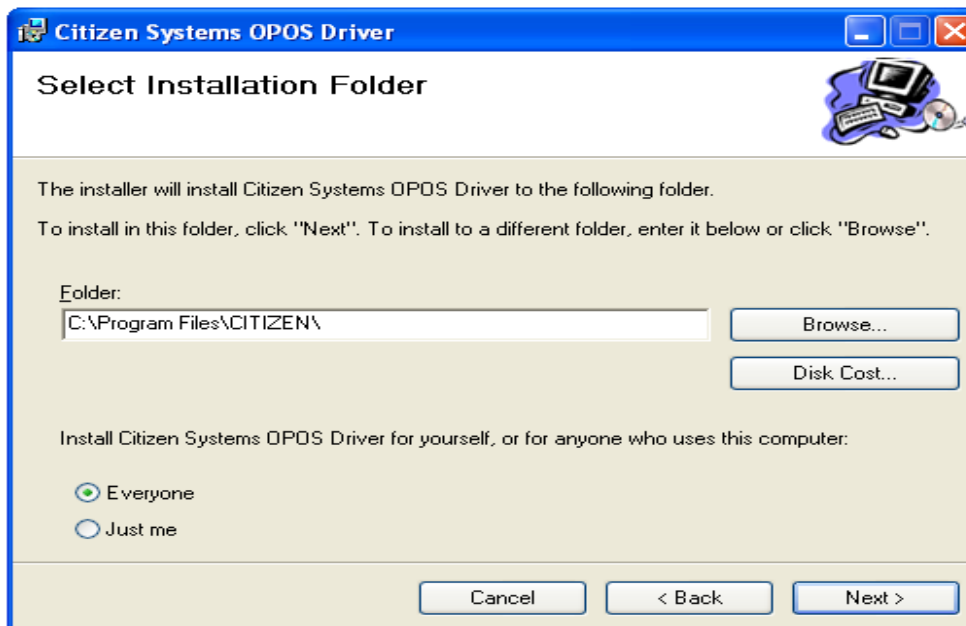
3. Click on **Next**.



4. Select **I Agree** and click on **Next**.

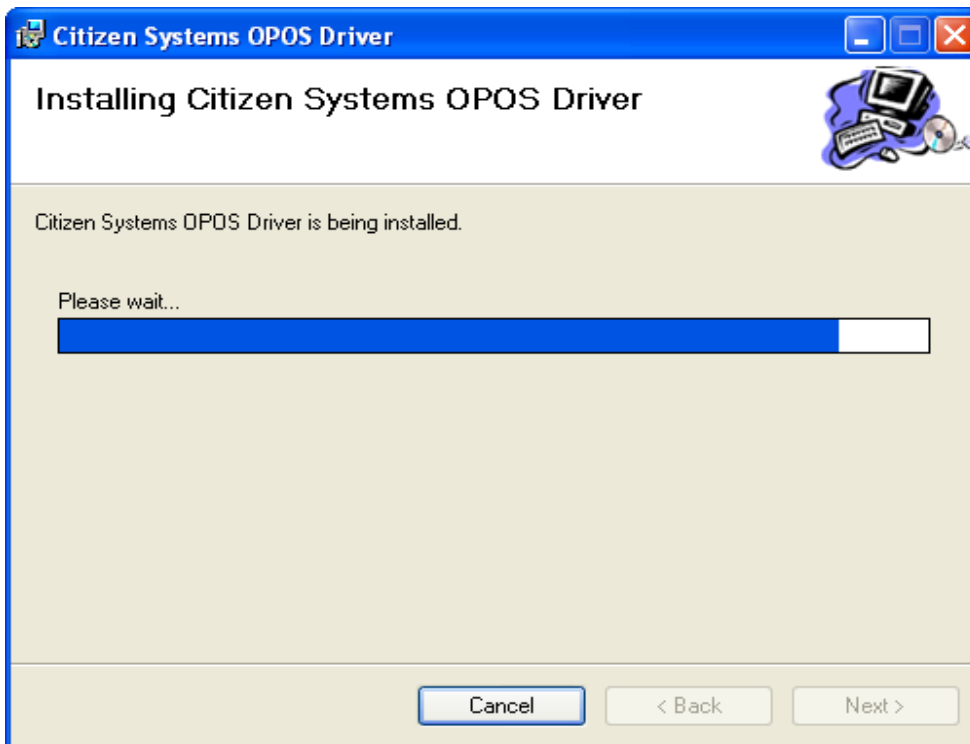


5. Select **everyone** and click on **Next**.

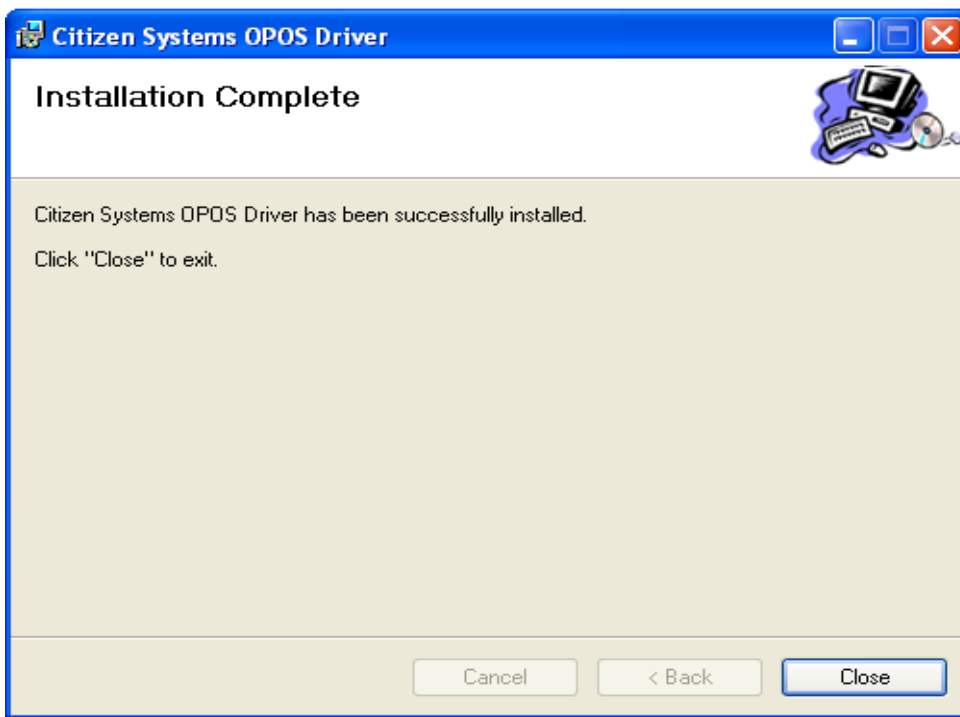




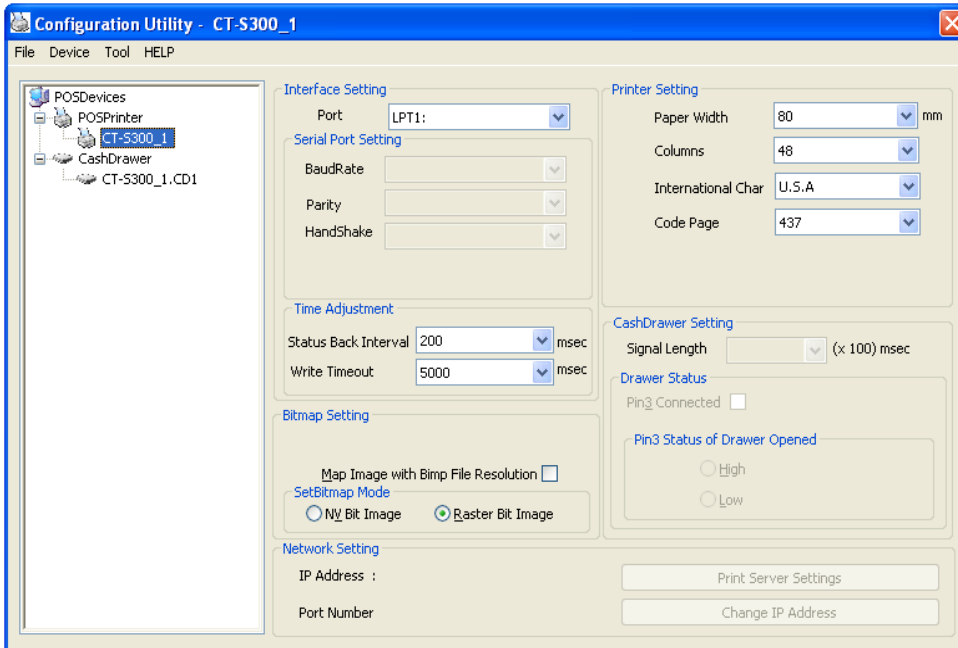
6. Installing OPOS driver.



7. After the successful installation, click on **C**lose

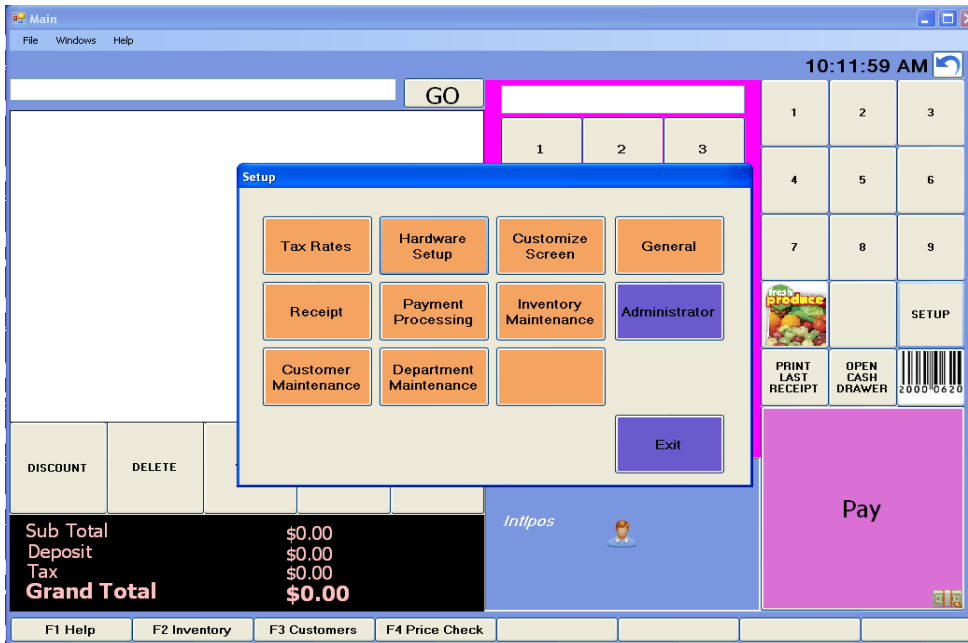


8 Now go to **Start > All programs > Citizen Systems > Configuration Utility**. You see that the printer CT-S300 and CT-S310 is added.

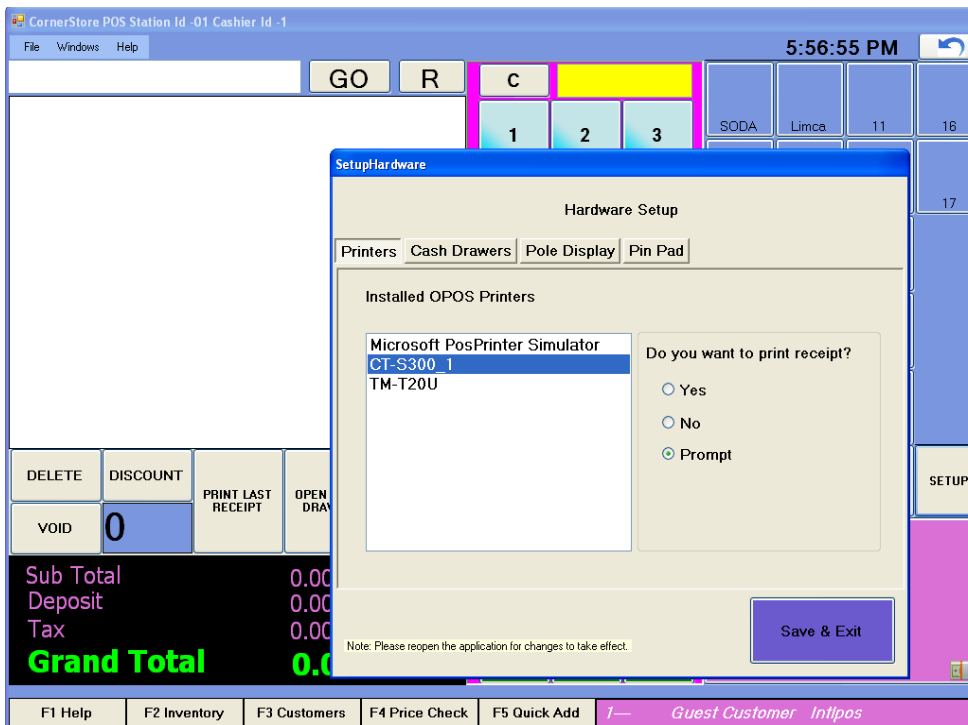


## Using Printer and Cash Drawer with Corner Store POS

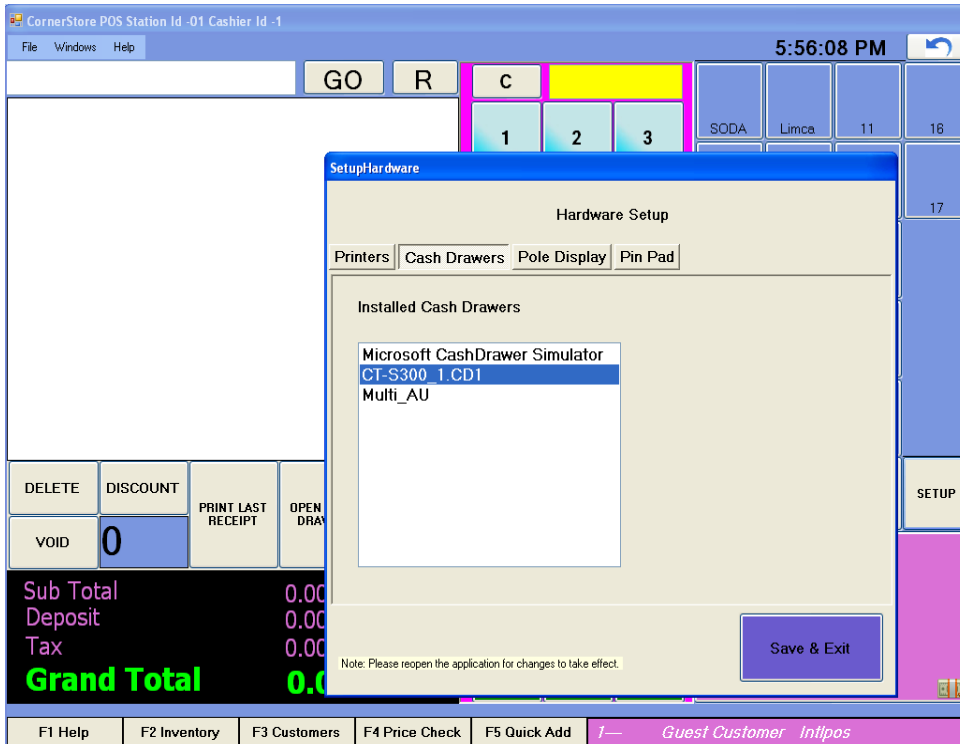
1. Open **Corner Store POS > Set Up > Hardware Set up**



2. Within **Hardware Set up** select **Printers tab**, select the name of printer which you had added within installed OPOS Printers list.



4. Select the option (Yes, No or Prompt) to print the receipt and then select **Save & Exit**.
5. Select **Cash Drawers** tab.
6. Select the name of cash drawer which you had added within Installed Cash Drawers list and then select **Save & Exit**.



7. To apply changes to take place close Corner Store and relogin.