

## **Installation guide for the PartnerTech CD7220 Pole Display 32-Bit System**



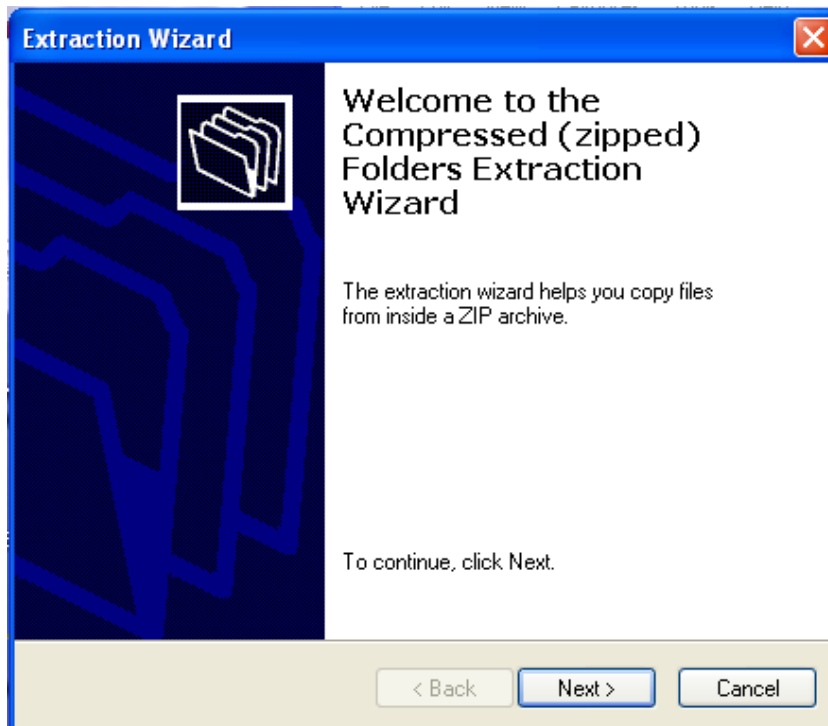
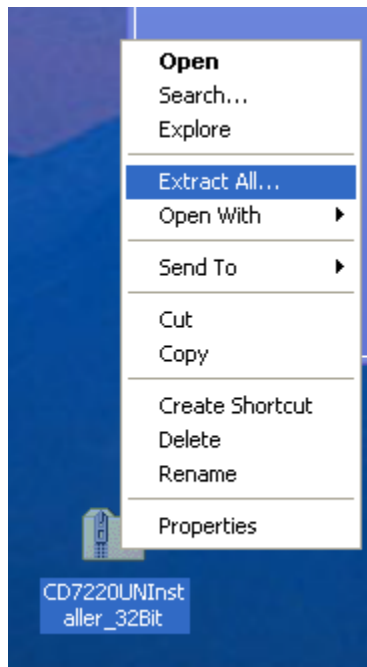
**This guide will cover how to install the drivers for the PartnerTech CD7200 Pole Display.**

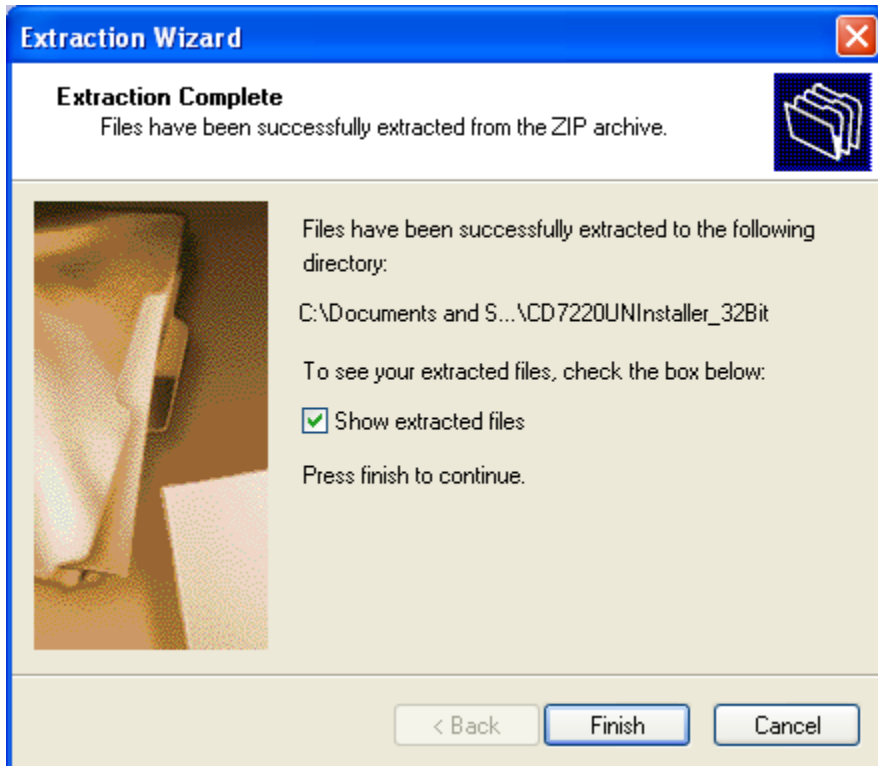
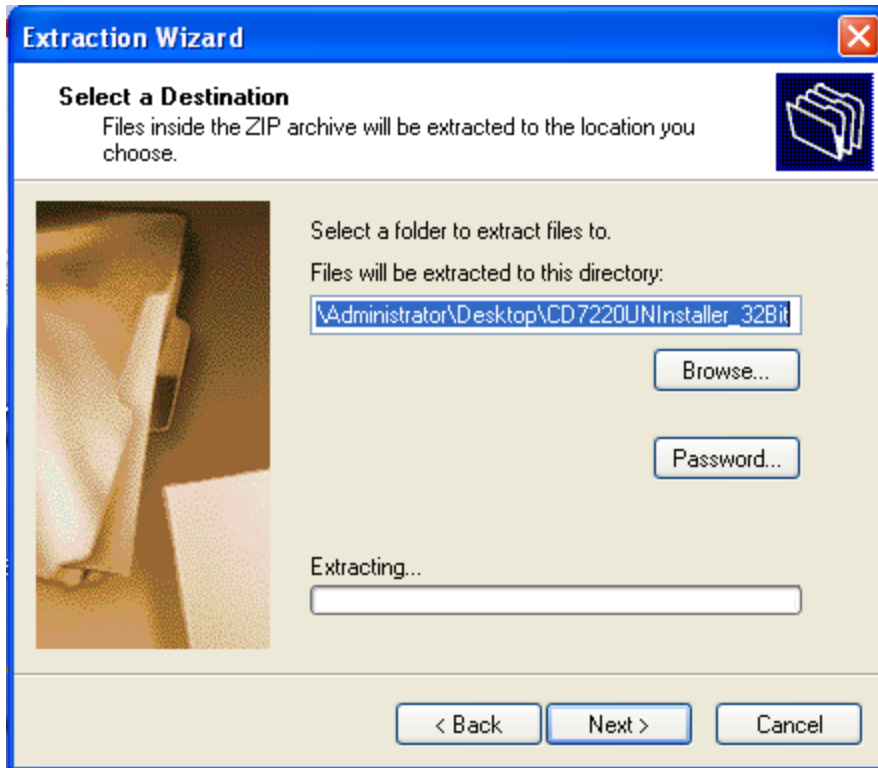
## Installing the Pole for Windows XP and Windows Vista/7 32-Bit

**Step 1:** Download the drivers at

[http://www.cornerstorepos.com/downloads/hardware/CD7220UNInstaller\\_32Bit.zip](http://www.cornerstorepos.com/downloads/hardware/CD7220UNInstaller_32Bit.zip)

**Step 2:** Right click the folder and click on **Extract All**. Click **Next** then **Next** then **Finish**.





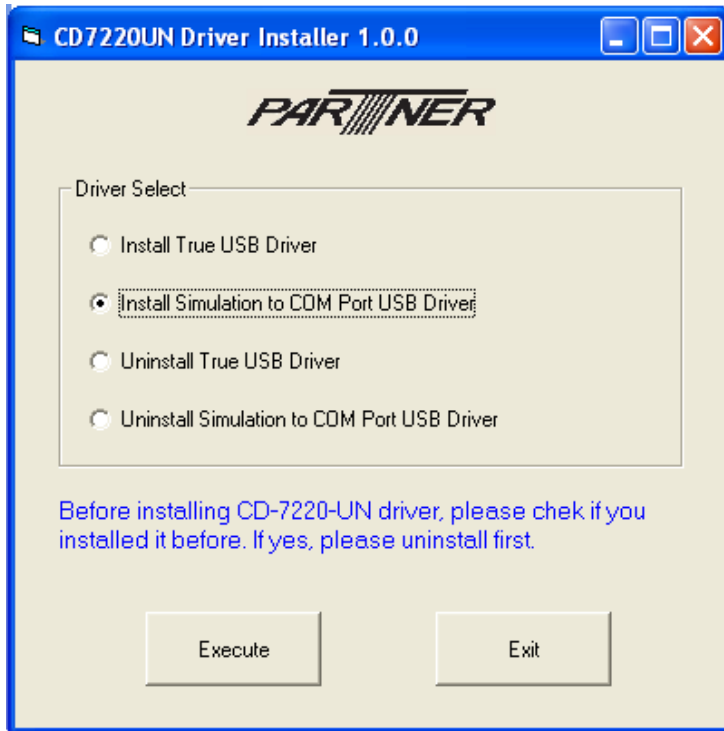
**Step 3:** Open the containing folder and run **CD7220UNInstaller**.



**Step 4:** Click **Run**.



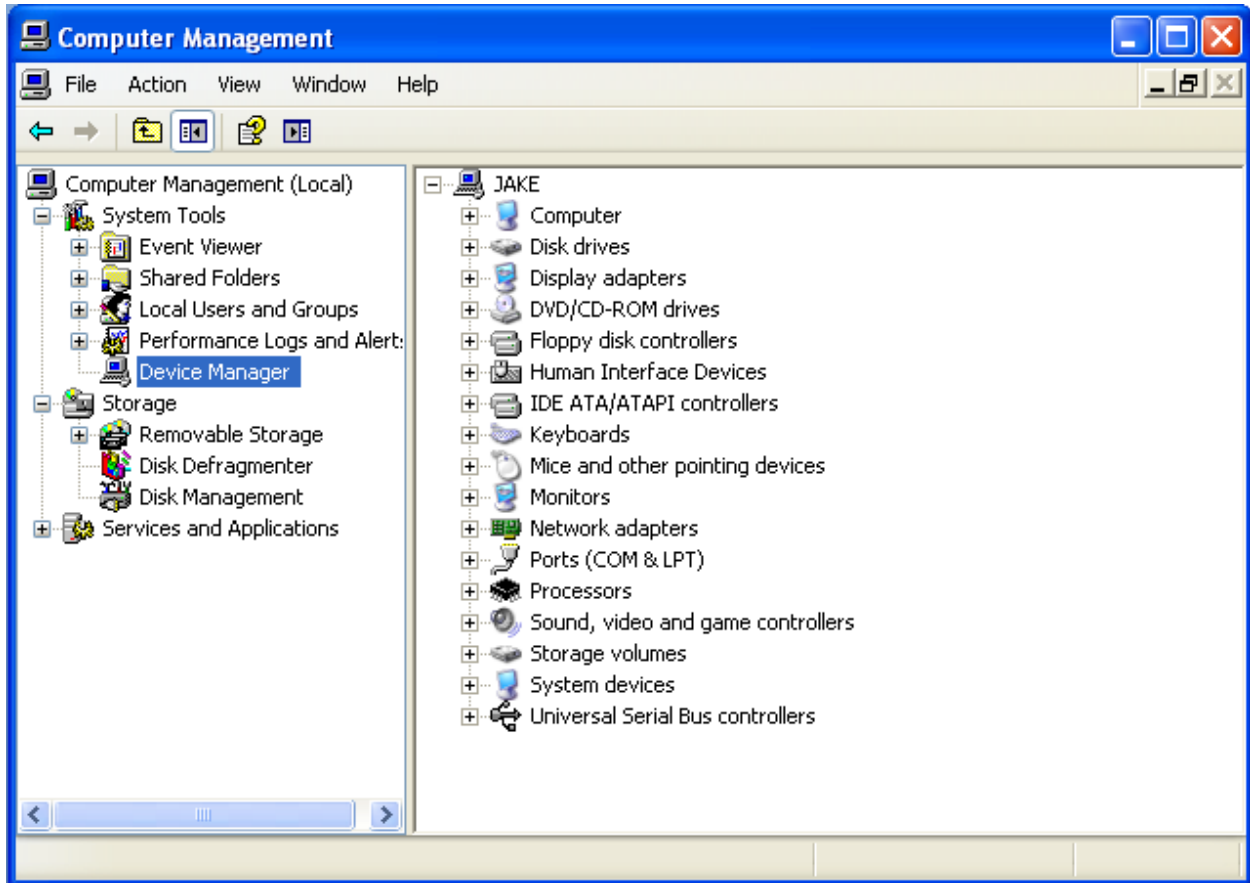
**Step 4:** Make sure the pole is plugged in, select “Install Virtual Com to USB driver”.



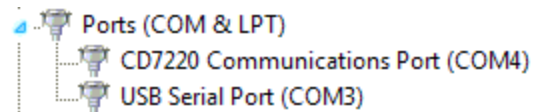
**Step 5:** Click **Execute**, then click **OK**.



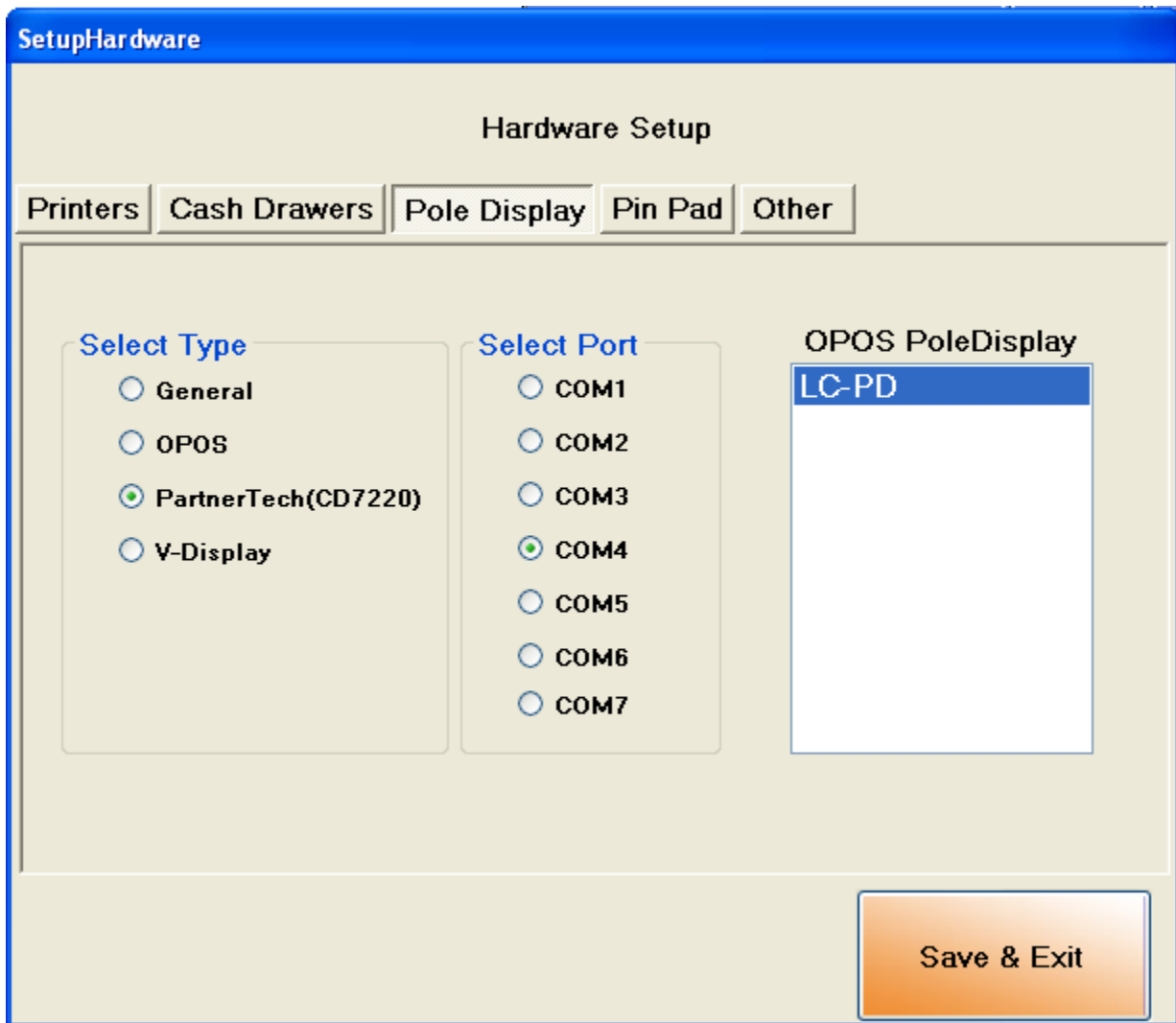
**Step 6:** Click **Exit**, go to **Start > Right Click Computer > Manage > Device Manager**



**Step 7:** Look under **ports** and look for the **COM port** that was created from the **Pole Display**



**Step 8:** Open up Cornerstore and go to **Setup > Hardware Setup > Pole Display**



**Step 9:** Select the **CD7220 option** along with the proper **COM port** that it asks for. You need not select the pole display name. Click **Save & Exit**

Your PartnerTech CD7220 Customer Pole Display is now ready to be used for CornerStore.

**Note:** If you unplug the Pole Display and plug it into a different port, you may need to re-select your COM Port.