

INTERNATIONAL POINT OF SALE

Installation instructions for the Firebox
Touch screen monitor on Windows 7 with Corner Store POS



Corner Store POS supports Firebox Touch screen monitors. This document will detail the process of installing the correct drivers for the touch screen and then setting up the touch screen in Corner Store POS.

Installing Appropriate Drivers.

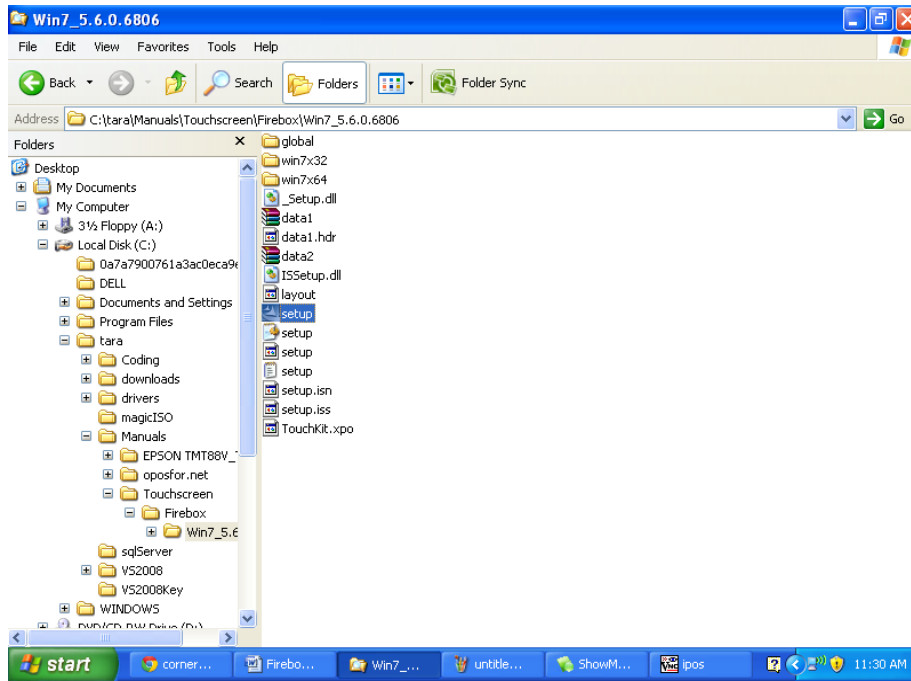
NOTE: Make sure that touch screen monitor and the computer is connected.

1. Start by running the setup.exe installer file, which can be downloaded at:

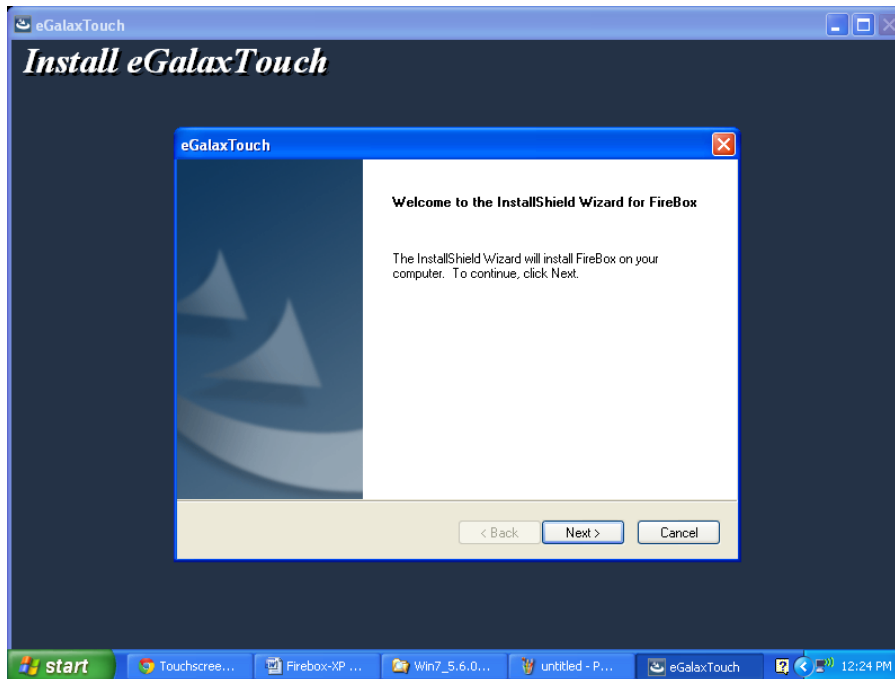
For Windows 7:

http://www.cornerstorepos.com/downloads/hardware/firebox_Win7_5.6.0.6806.zip

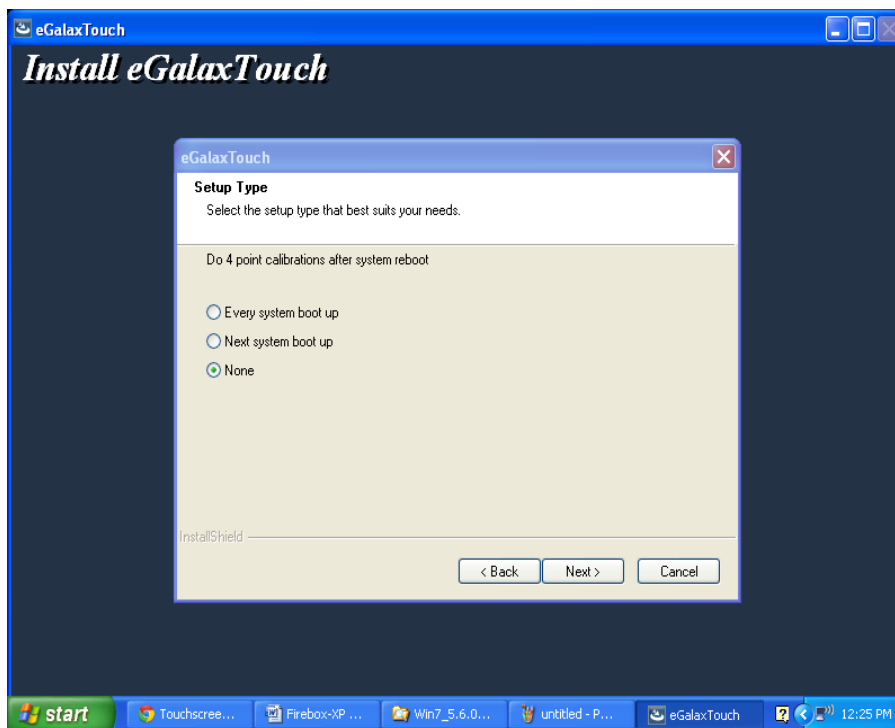
2. Now, unzip the file. And run the **setup.exe** file.



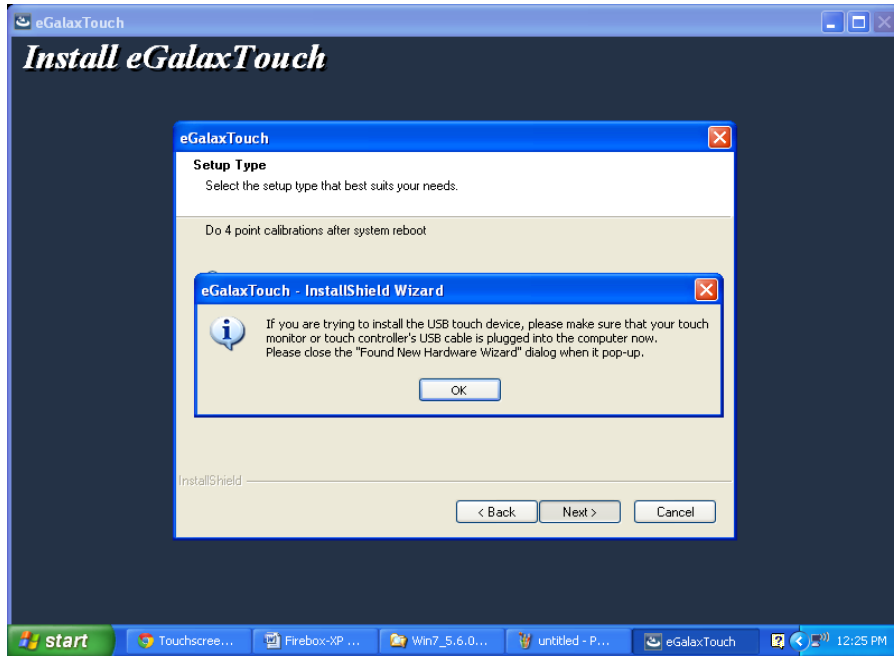
3. At this initial screen, select **'Next'**.



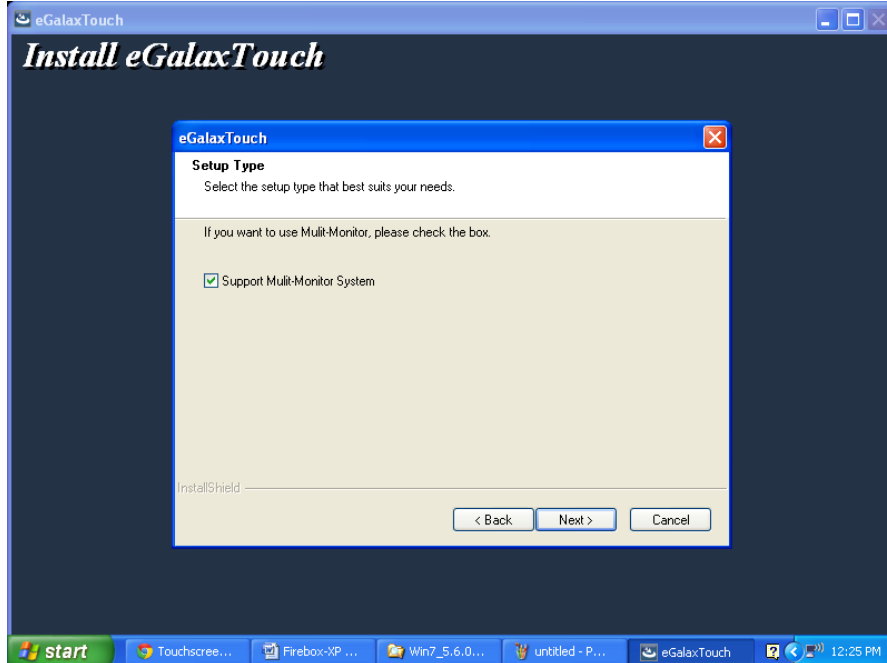
4. Select the **'None'** option. And click on **'Next'**.



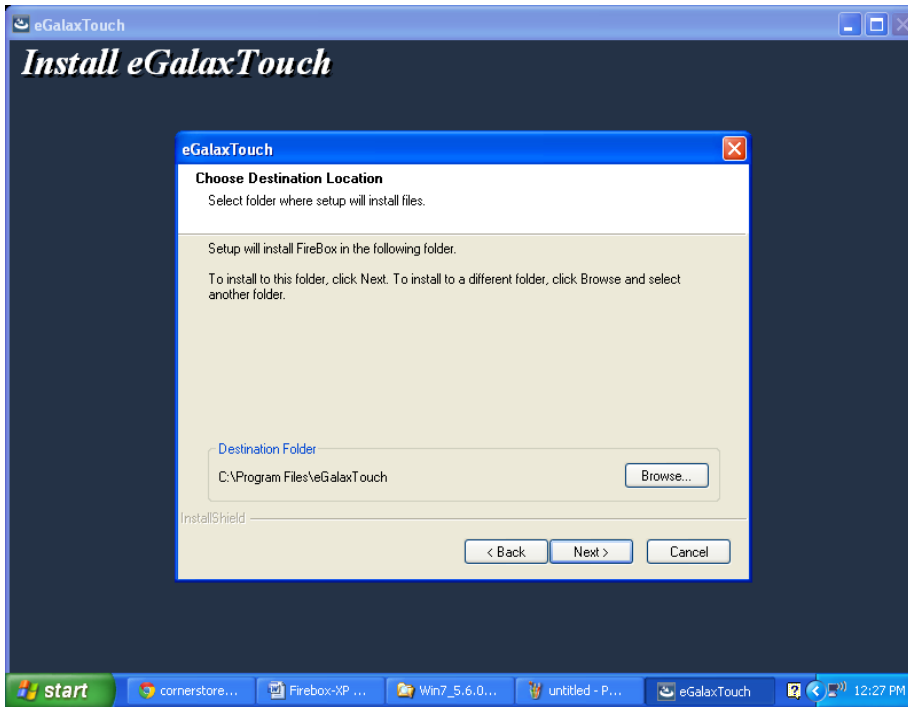
- When prompted select **OK** if your touch screen monitor and touch controller's (CPU) is connected.



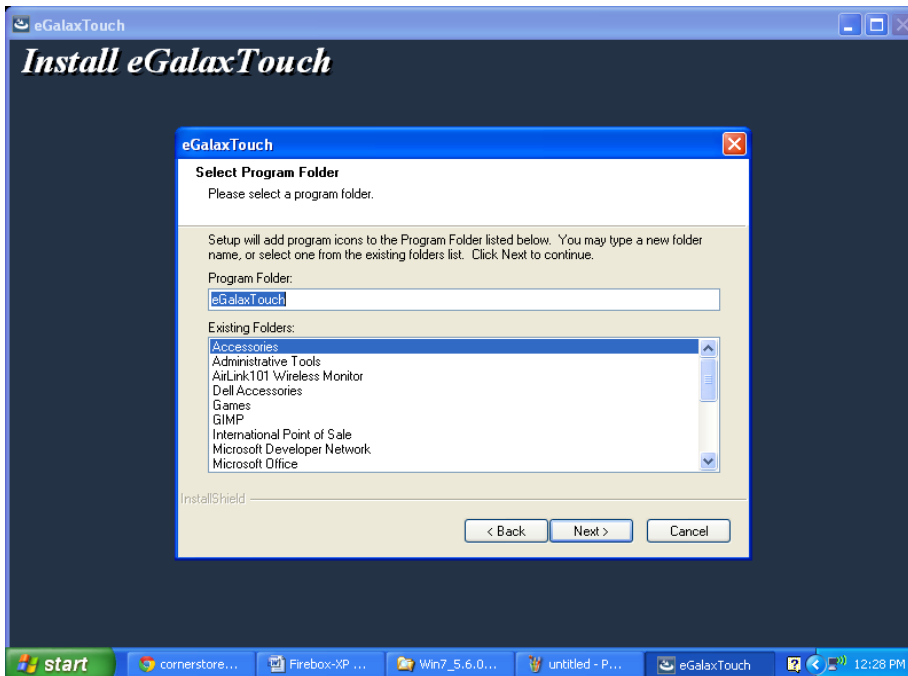
- Check mark the '**Support Multi-Monitor**' system. And, click on 'Next'.



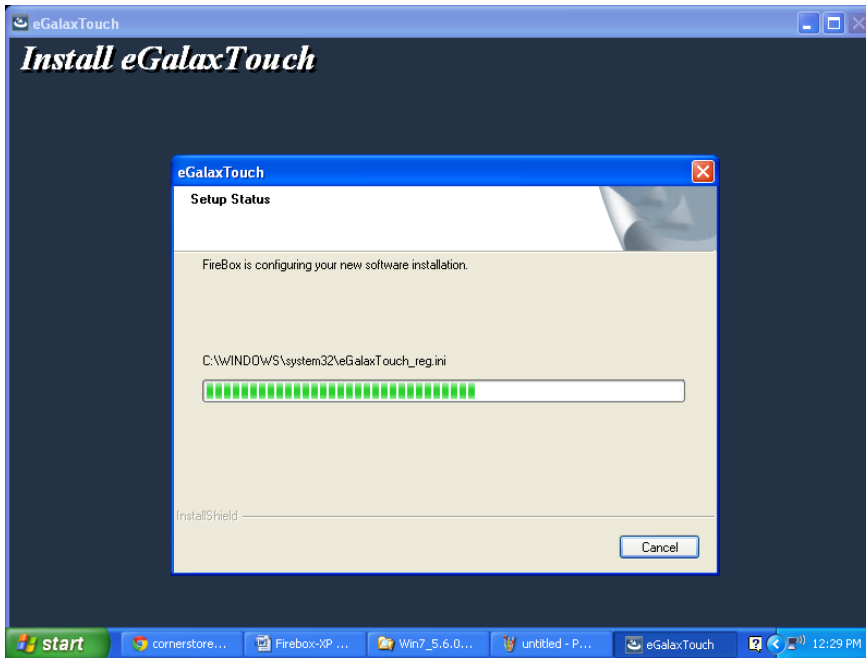
7. Click on **'Next'**.



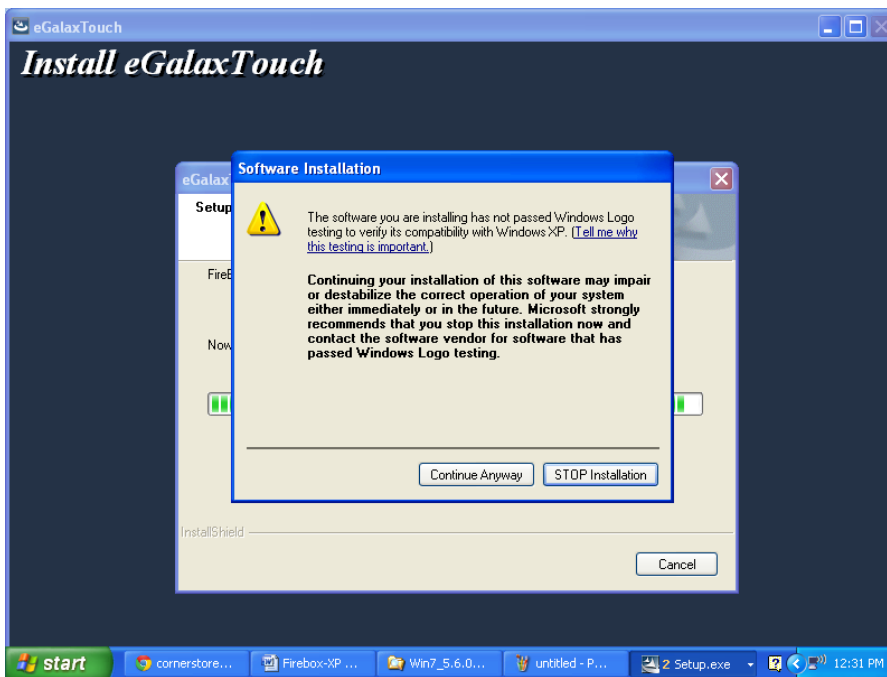
8. Now click on **'Next'**.



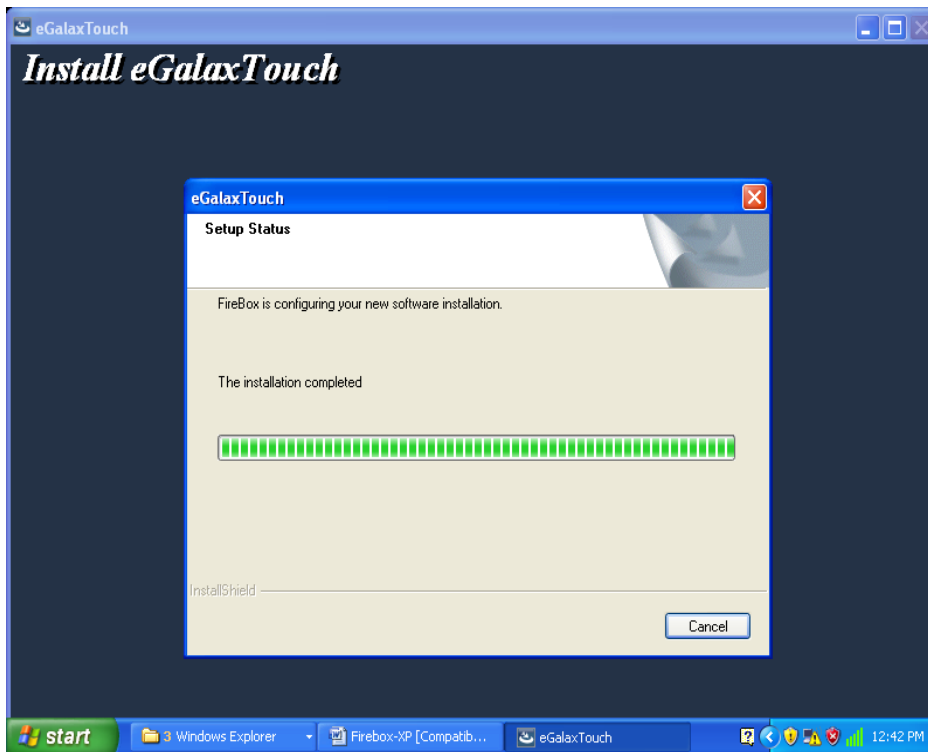
9. Set up is configuring the new software installation.



10. Now, click on 'Continue Anyway'.



11. The installation is complete.



12. After successful installation you will be asked for 4 point calibration. On the main screen, you will find red spot. Touch the spot with your finger until it turns into blue. Repeat this for 3 more times.

13. After successful 4 point calibration restart your computer and it is ready to work.