

INTERNATIONAL POINT OF SALE

Installation instructions for the HP
Touch screen monitor LP5006tm with Corner Store POS



Corner Store POS supports HP Touch screen monitors. This document will detail the process of installing the correct drivers for the touch screen and then setting up the touch screen in Corner Store POS.

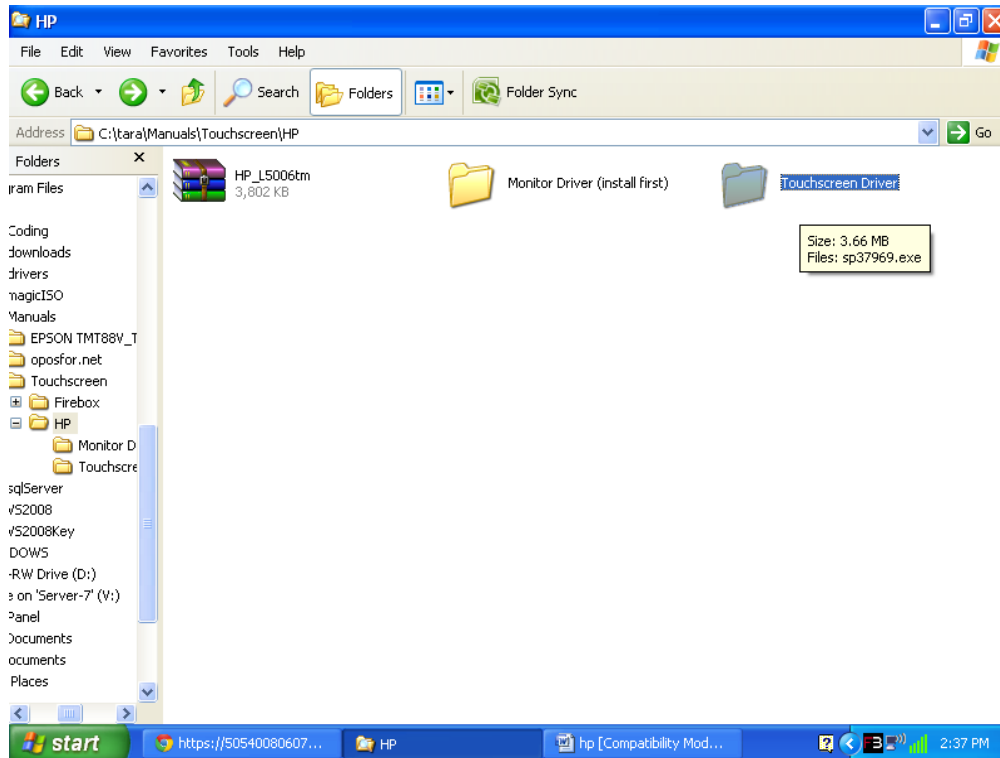
Installing Appropriate Drivers.

NOTE: Make sure that touch screen monitor and the computer is connected.

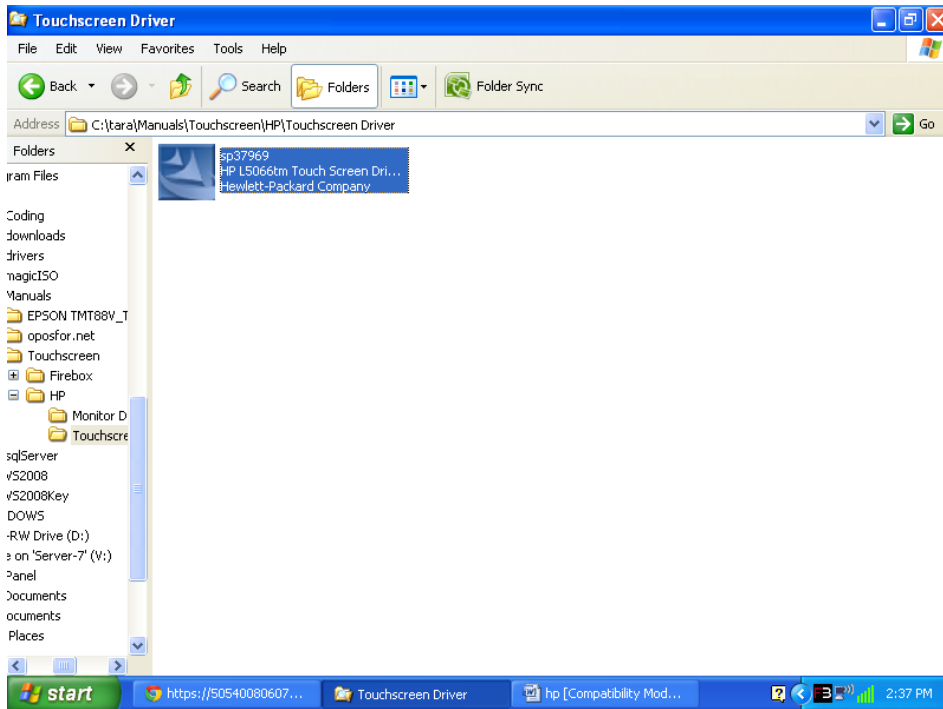
1. The HP L5006tm touchscreen monitor driver can be downloaded at

http://cornerstorepos.com/downloads/hardware/HP_L5006tm.zip

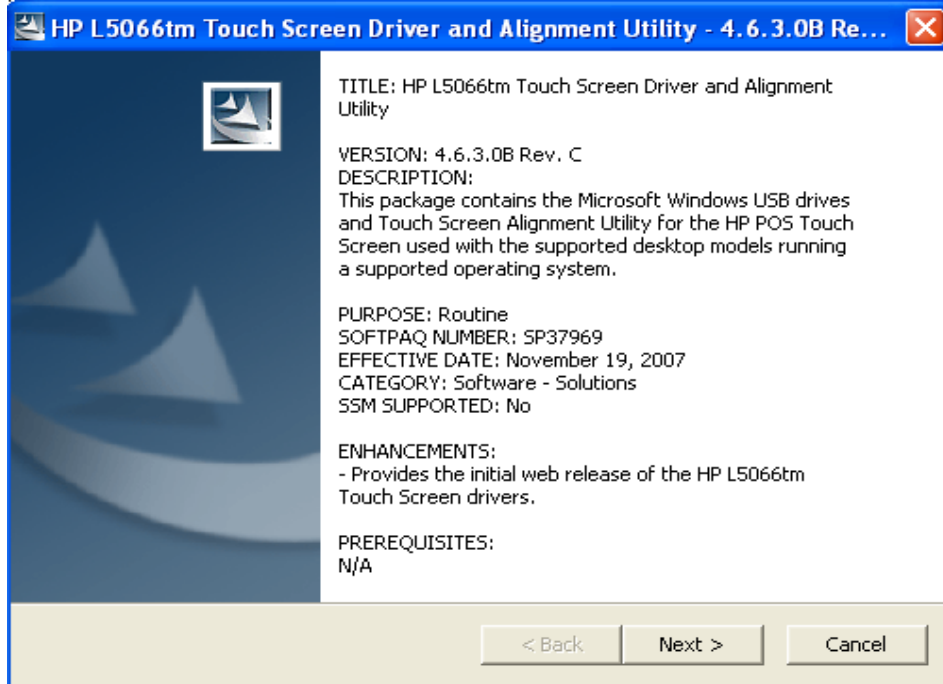
2. Unzip the file and click on the '**Touchscreen**' driver folder.



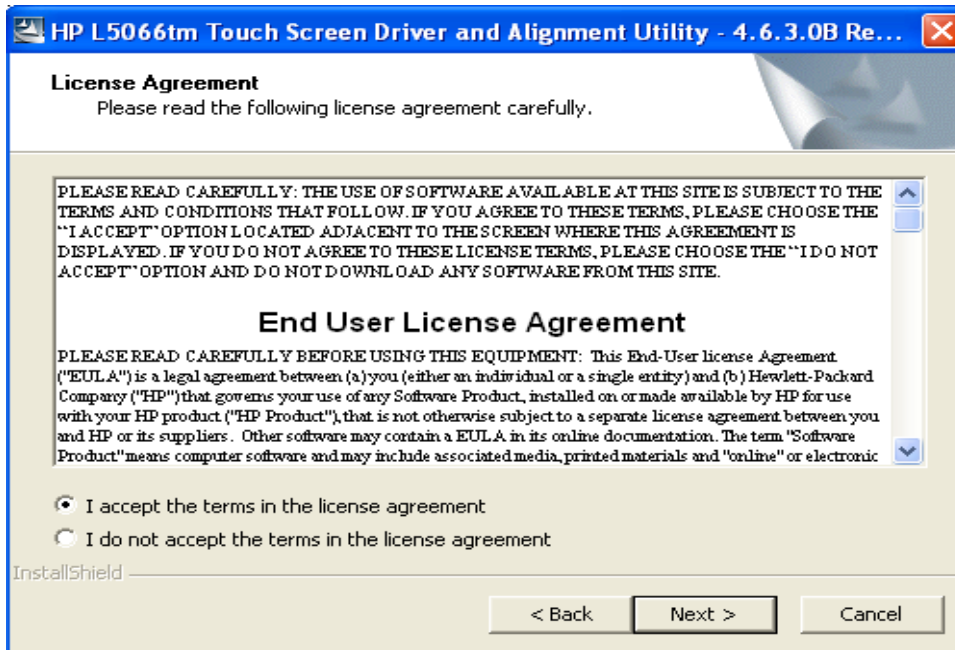
3. Click on the set up file.



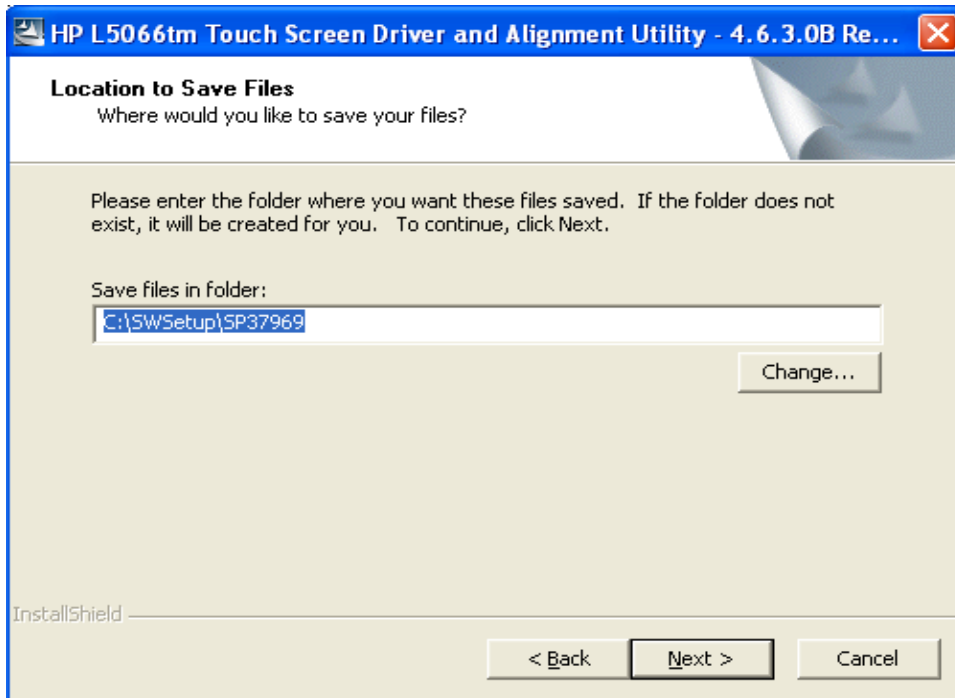
4. At the initial screen, click on 'Next'.



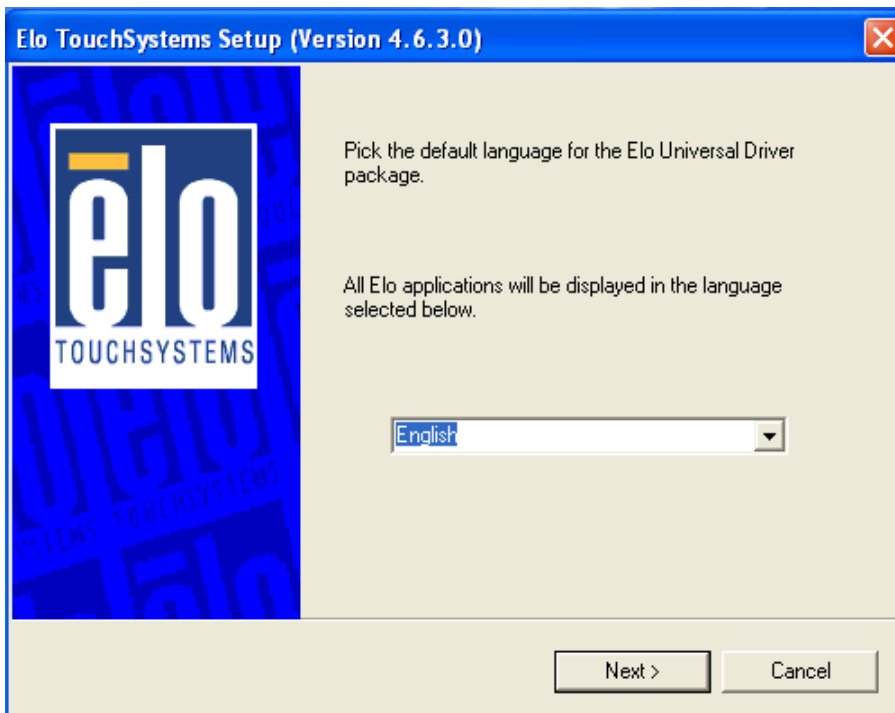
5. Select the option, 'I accept the terms in the license agreement'. And, then click on 'Next'.



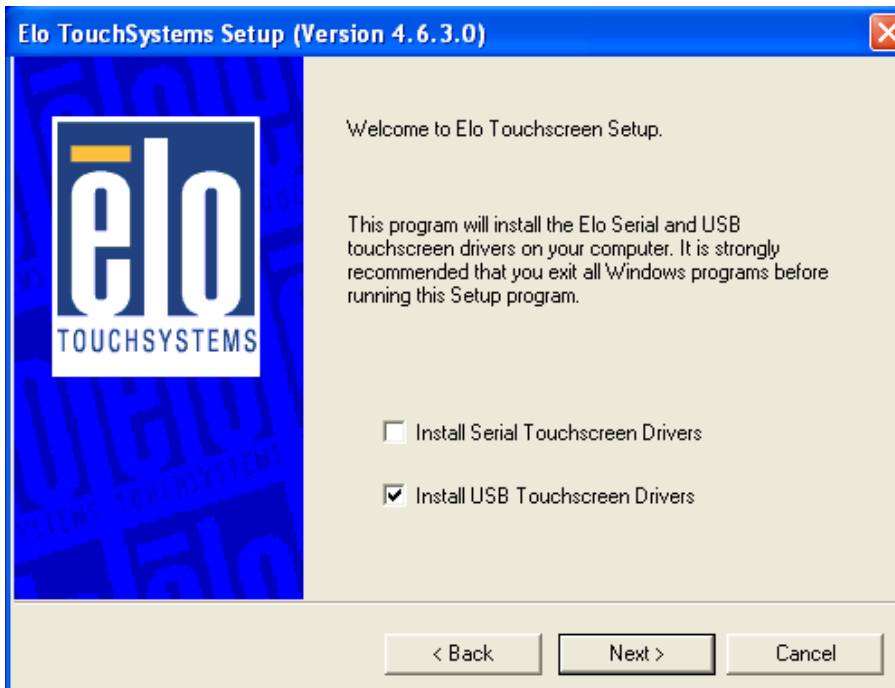
6. Now, click on 'Next'.



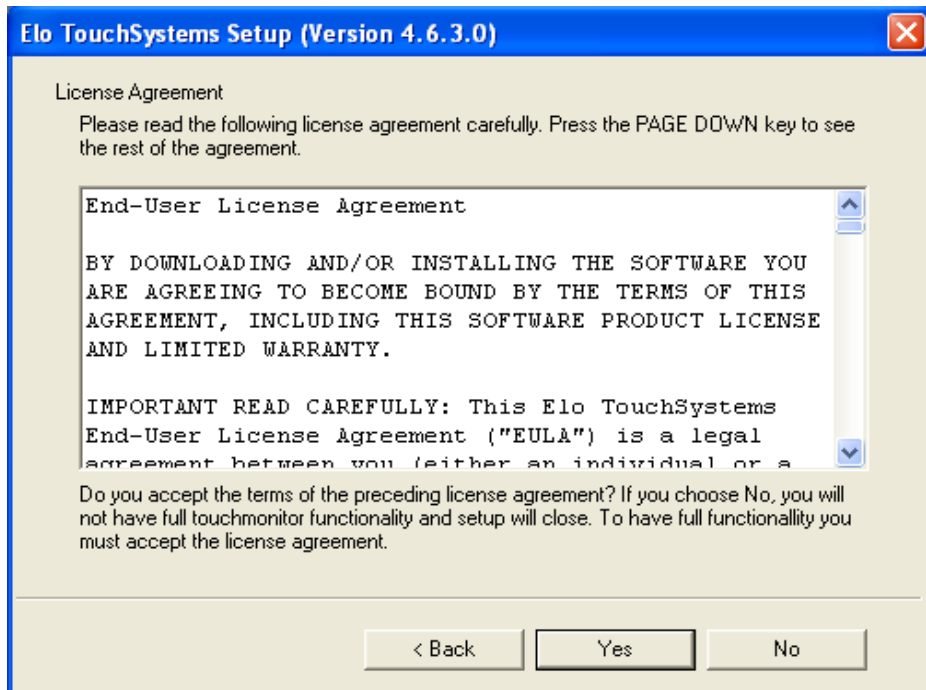
7. Select the language to display the application in **English**. Click on '**Next**'.



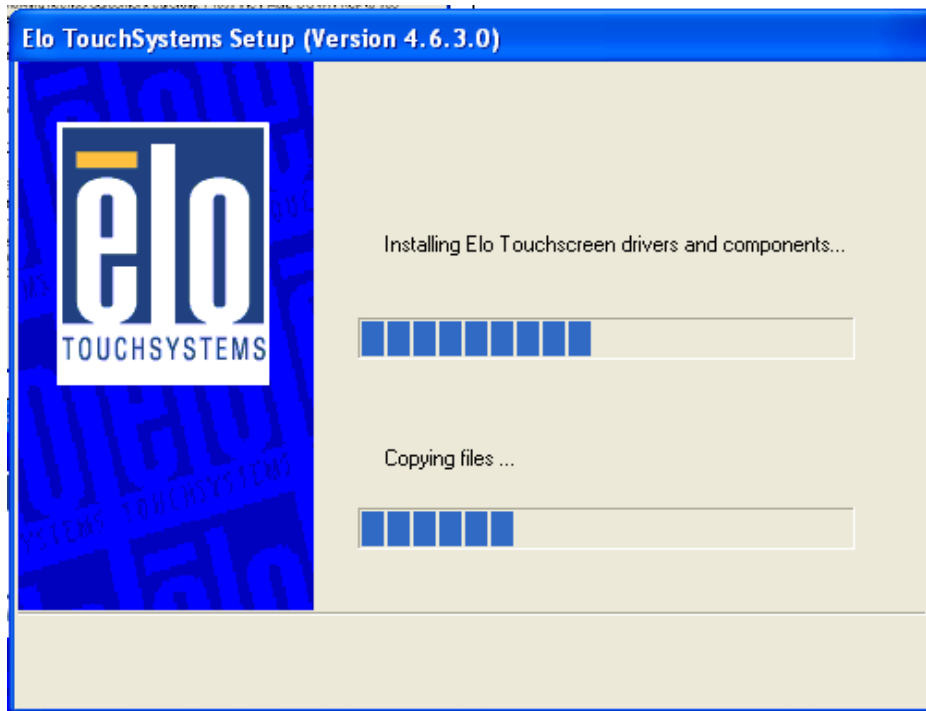
8. Select Install **USB Touchscreen Drivers**. And, then select **Next**.



9. Select **Yes**.



10. Installing the touch screen monitors.



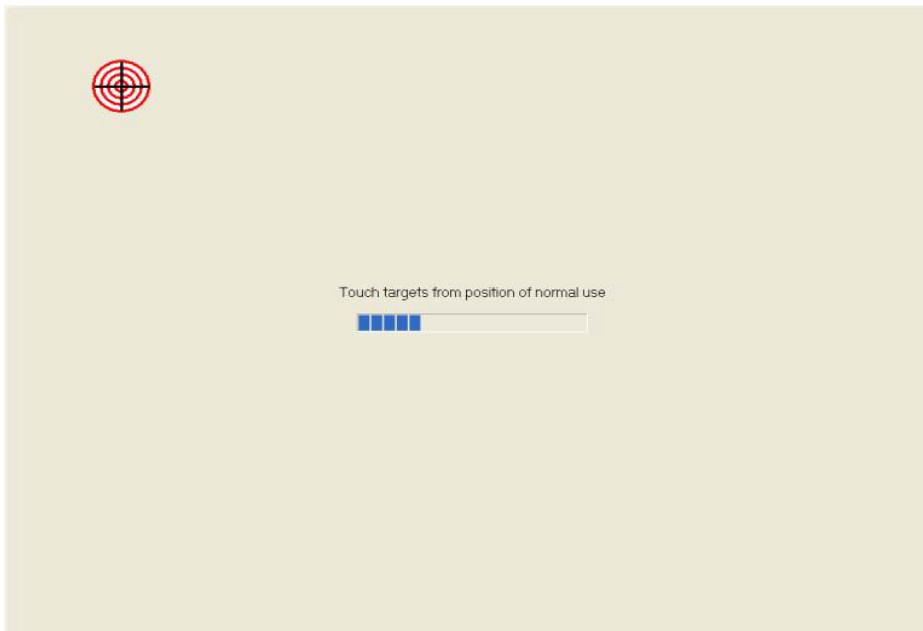
11. The drivers will then be installed. Select Calibrate Touchscreen monitors. Select Finish.

12. After the installation has completed you should see the EloTouchscreen Properties window.

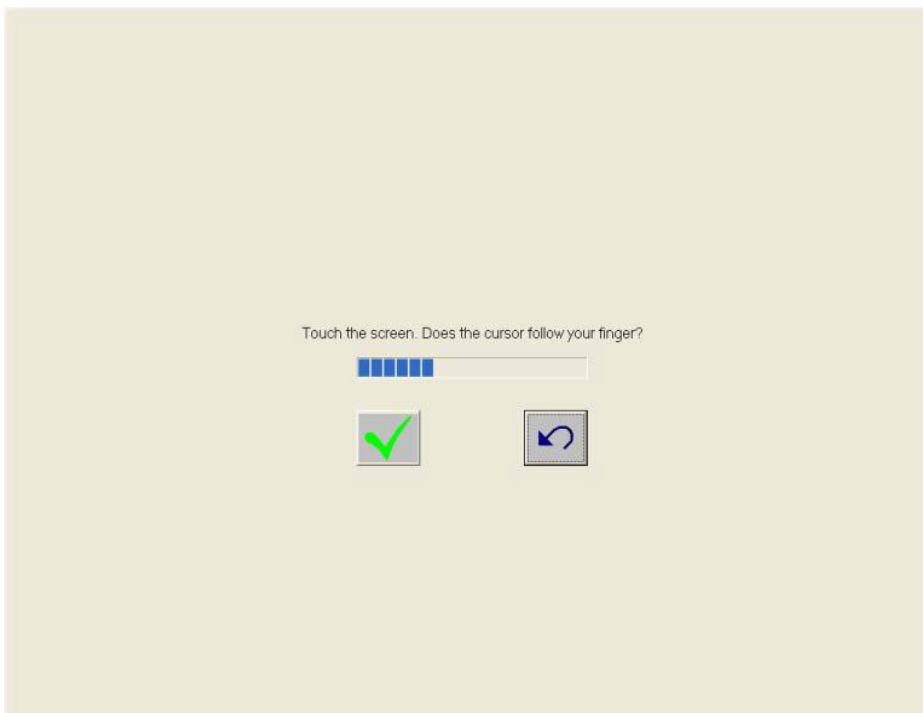


13. Select **Align**.

14. You will see a series of targets (red spot). Touch the spot with your finger.



15. Move your finger around the screen, if the cursor follows your finger then select the green check box. Note: if the cursor does not follow your finger then hit the redo button (blue arrow).



16. After successful calibration restart your computer and it is ready to work.