

INTERNATIONAL POINT OF SALE

Installation instructions for Gainscha VFD220E Pole Display



The VFD220E Pole Display is a serial interface that does not require drivers. This guide will instruct you how to set up the Pole Display with CornerStore

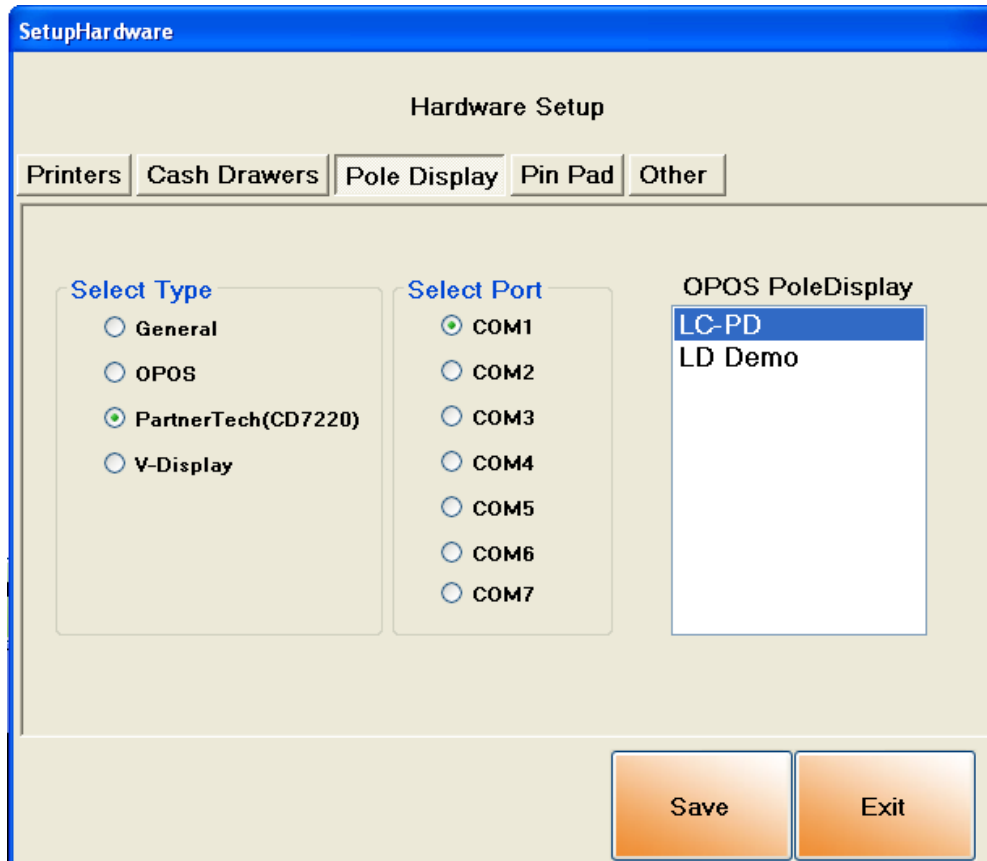
Installing G Pole Display VFD220E

Step 1: Plug in the pole display into a **Serial (COM)** port.

Step 2: Take note of the port number onto which it is connected.

In order to get that, Click on Windows (or Start) button and right click on Computer (My Computer) and select Manage. Click on Device Manager and Expand **Ports (COM & LPT)**. Under Ports (COM & LPT) check for Communications Port (COM1 or COM2) and take a note of that.

Step 2: In CornerStore, go to **Setup > Hardware Setup > Pole Display**.



Step 3: Select **PartnerTech(CD7220)**, then select the **COM** number that corresponds to the com port it's plugged into. You do not need to select anything on the right side.