

Installation guide for Possiflex PD 2600



The Possiflex PD 2600 is compatible with the CornerStorePOS software. This guide will cover the ease of installation of the device.

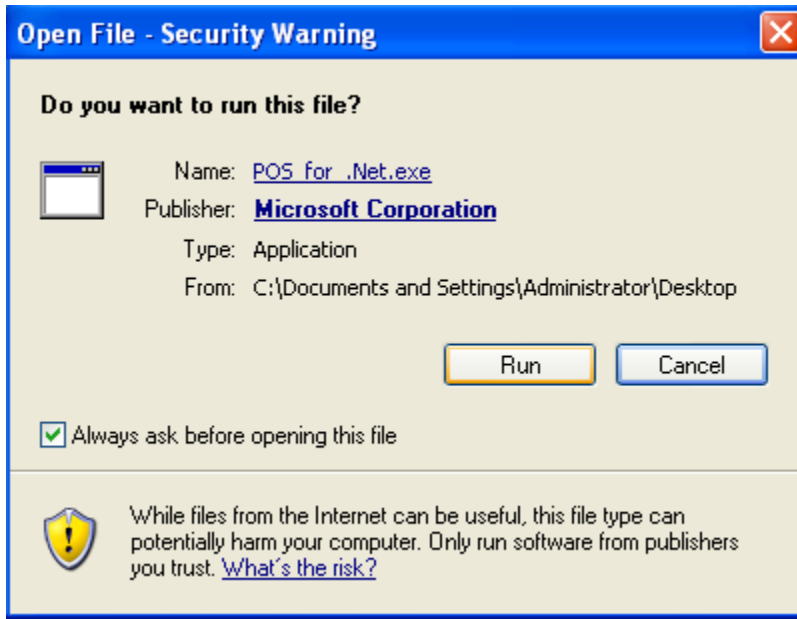
Make sure POS for .NET is installed on your computer. If it is not, please follow the instructions to install POS for .NET. If it is already installed, disregard this section

POS for .NET installation

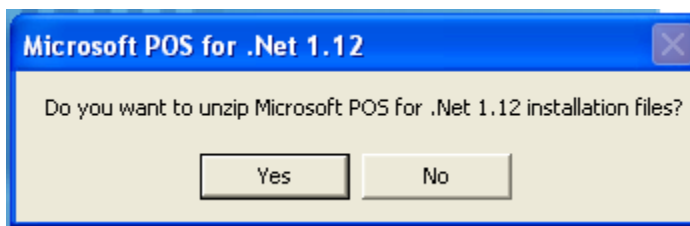
(http://www.cornerstorepos.com/downloads/hardware/POS_for_.Net.exe)

Step 1: Create a folder on the desktop named “*Cornerstore*” [Right Click->New->Folder]

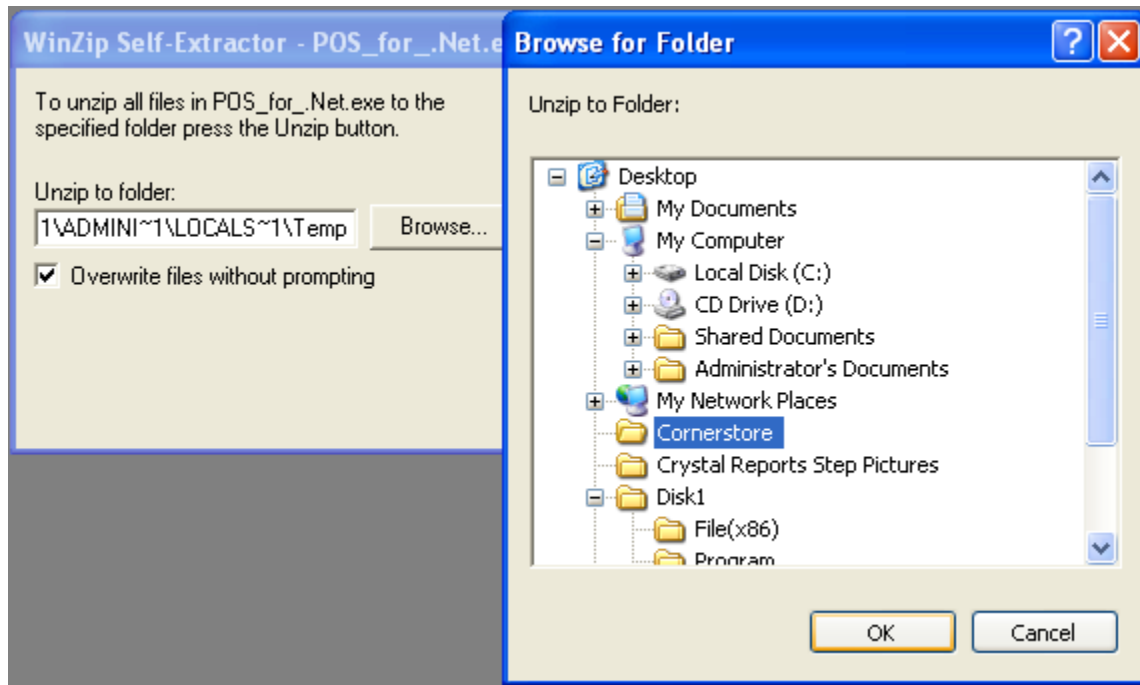
Step 2: Run the installer for POS for .NET



Step 3: Click Yes



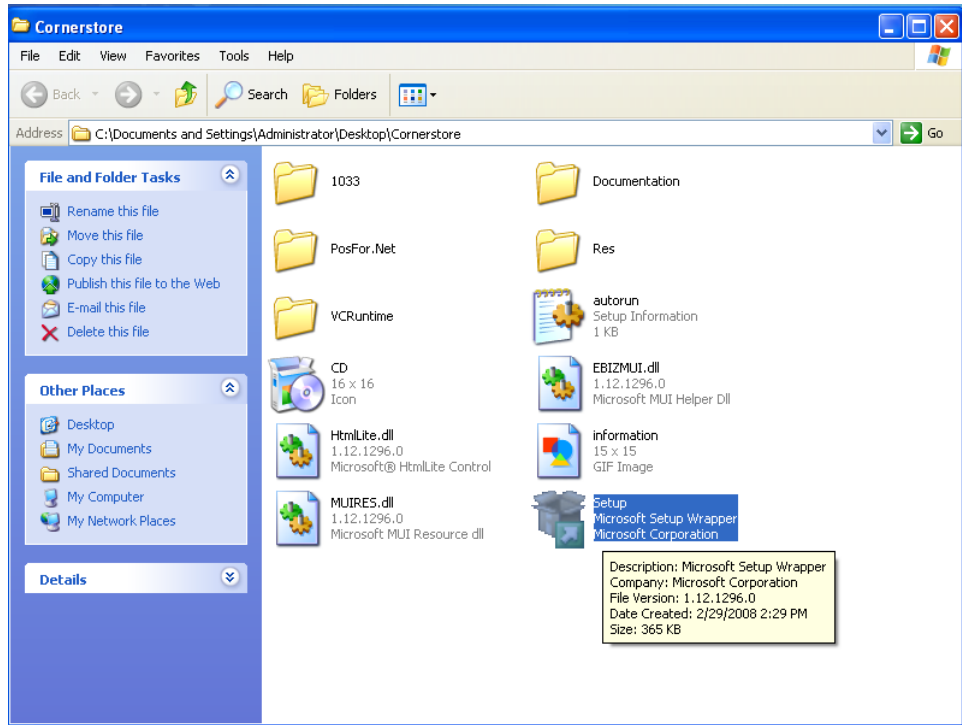
Step 4: Click Browse, then select the *CornerStore* folder you just made, then click unzip.



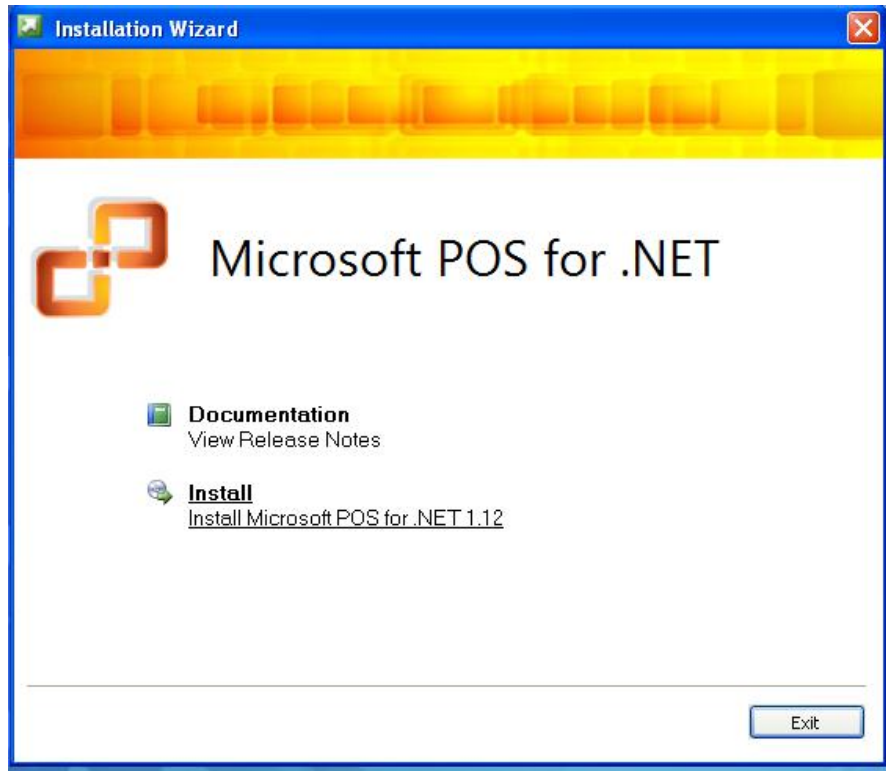
Step 5: If you see this, you have unzipped correctly. Click OK.



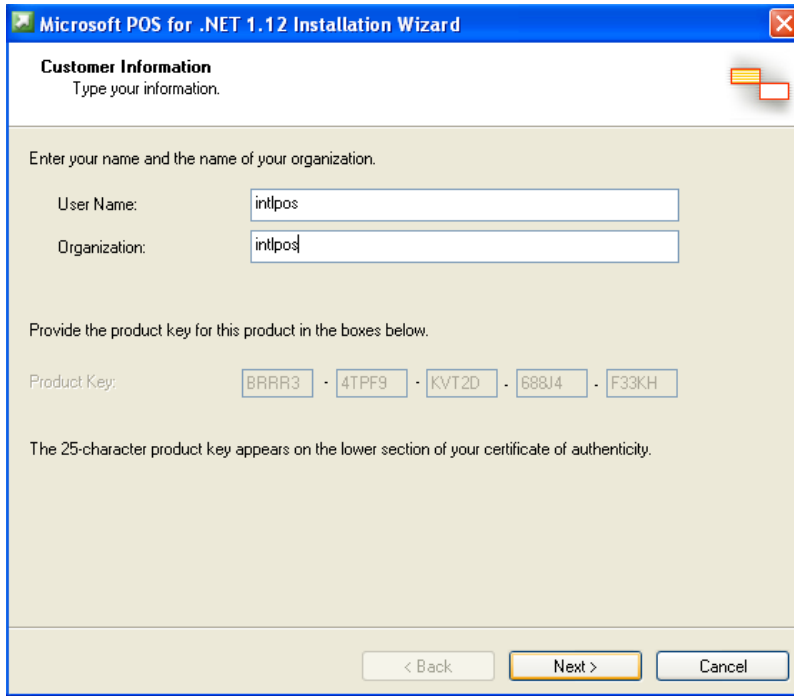
Step 6: Open up the *CornerStore* folder, and open the Setup file.



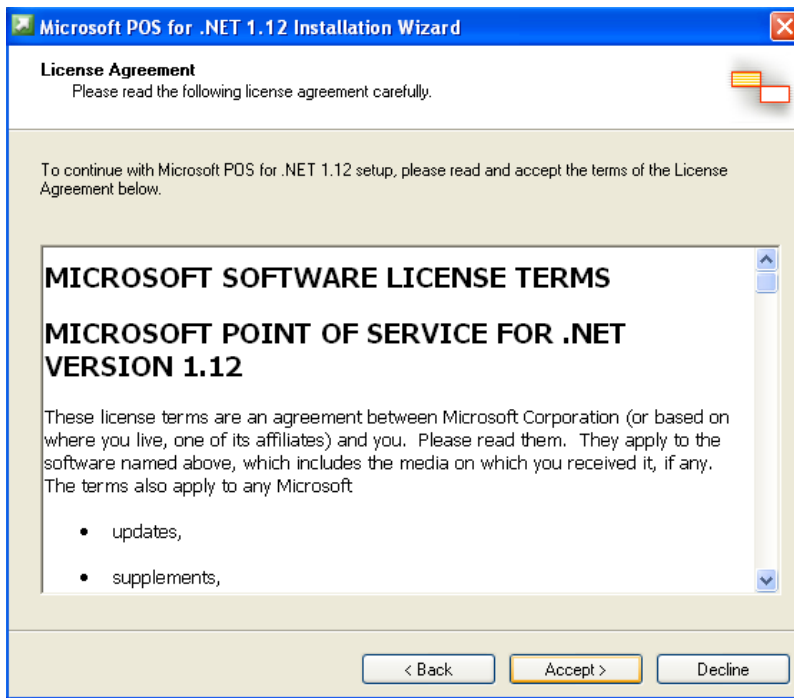
Step 7: Click **Install**



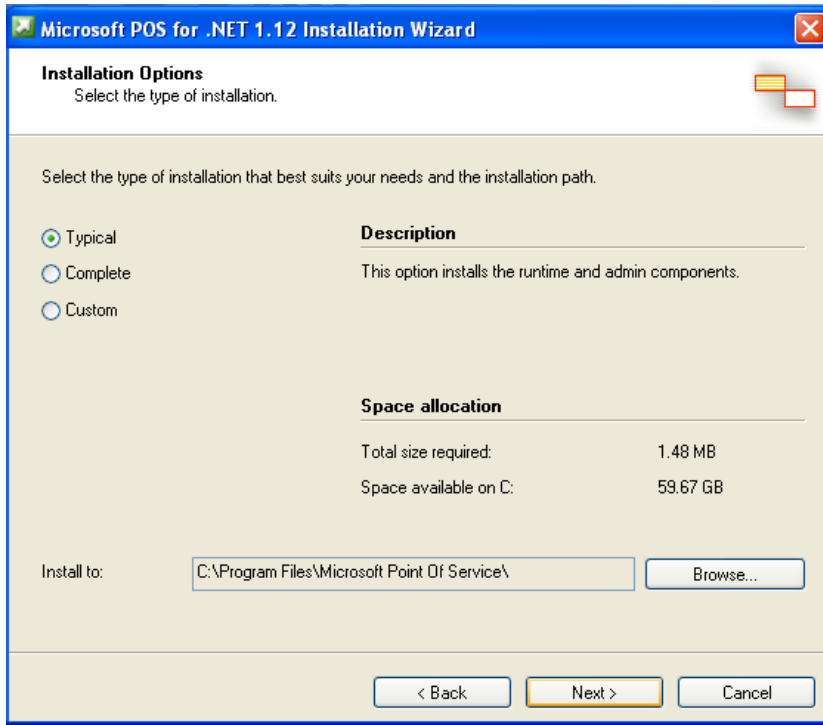
Step 8: Enter a username and organization that would be logical for your store/company, then hit **Next**.



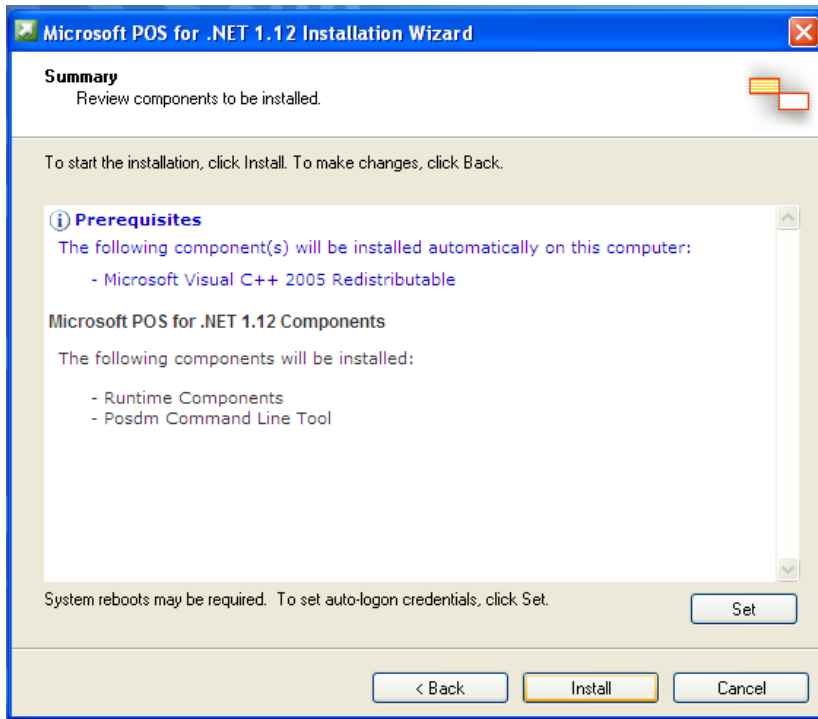
Step 9: Click **Accept**.



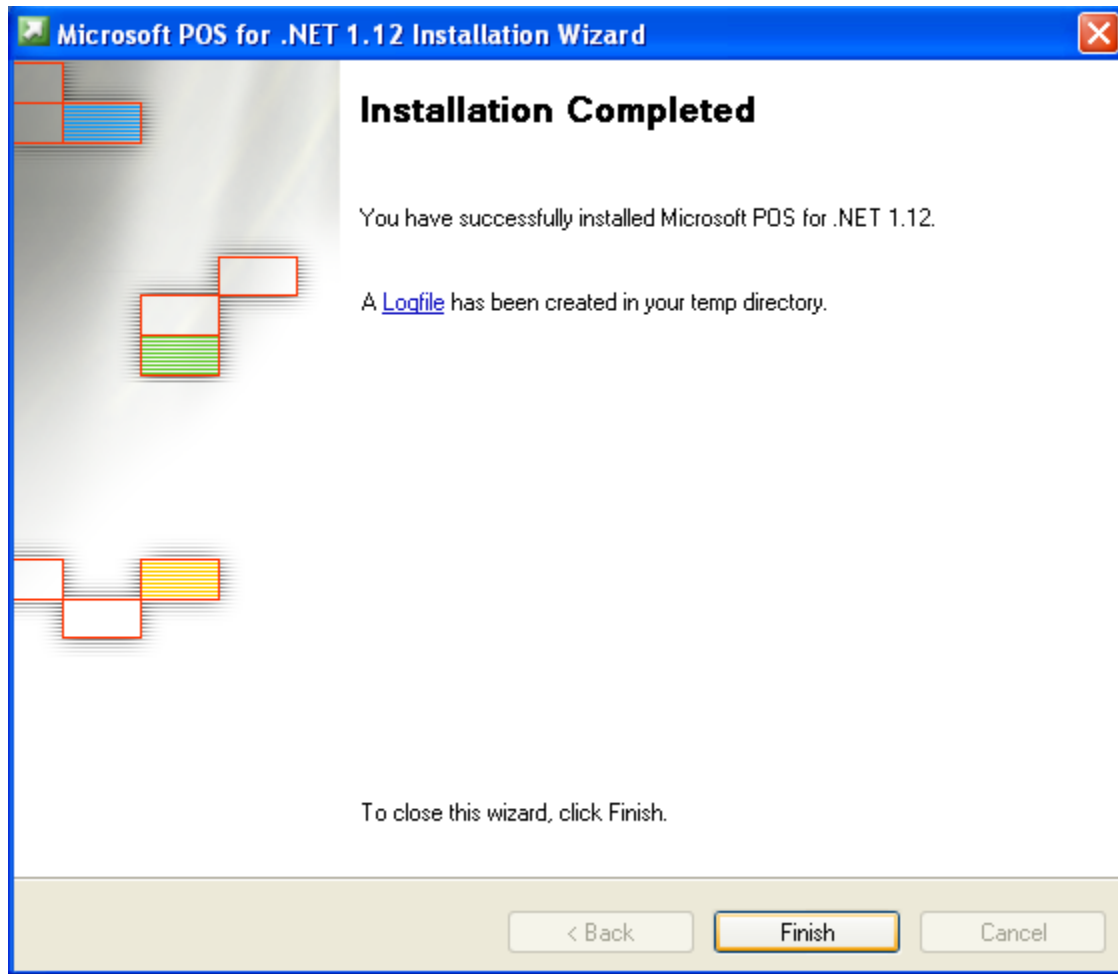
Step 10: Check **Typical**, then click **Next**.



Step 11: Click **Install**



Step 12: Click **Finish**, you have now installed POS for .NET!



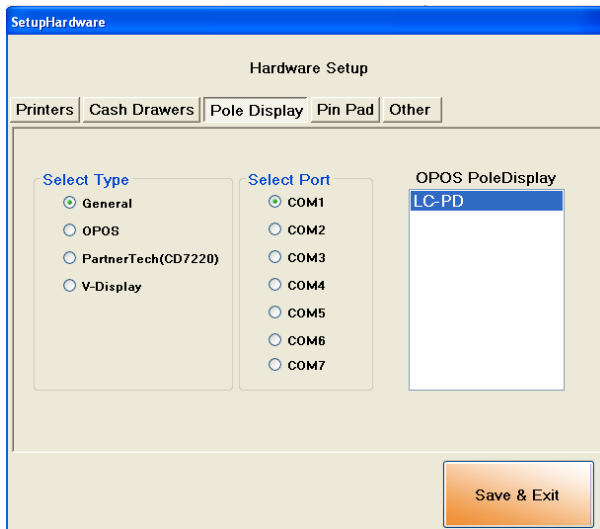
Pole Display Installation

Step 1: Make sure the device is plugged in correctly on the bottom. You will be using the Serial connection to connect to the computer.

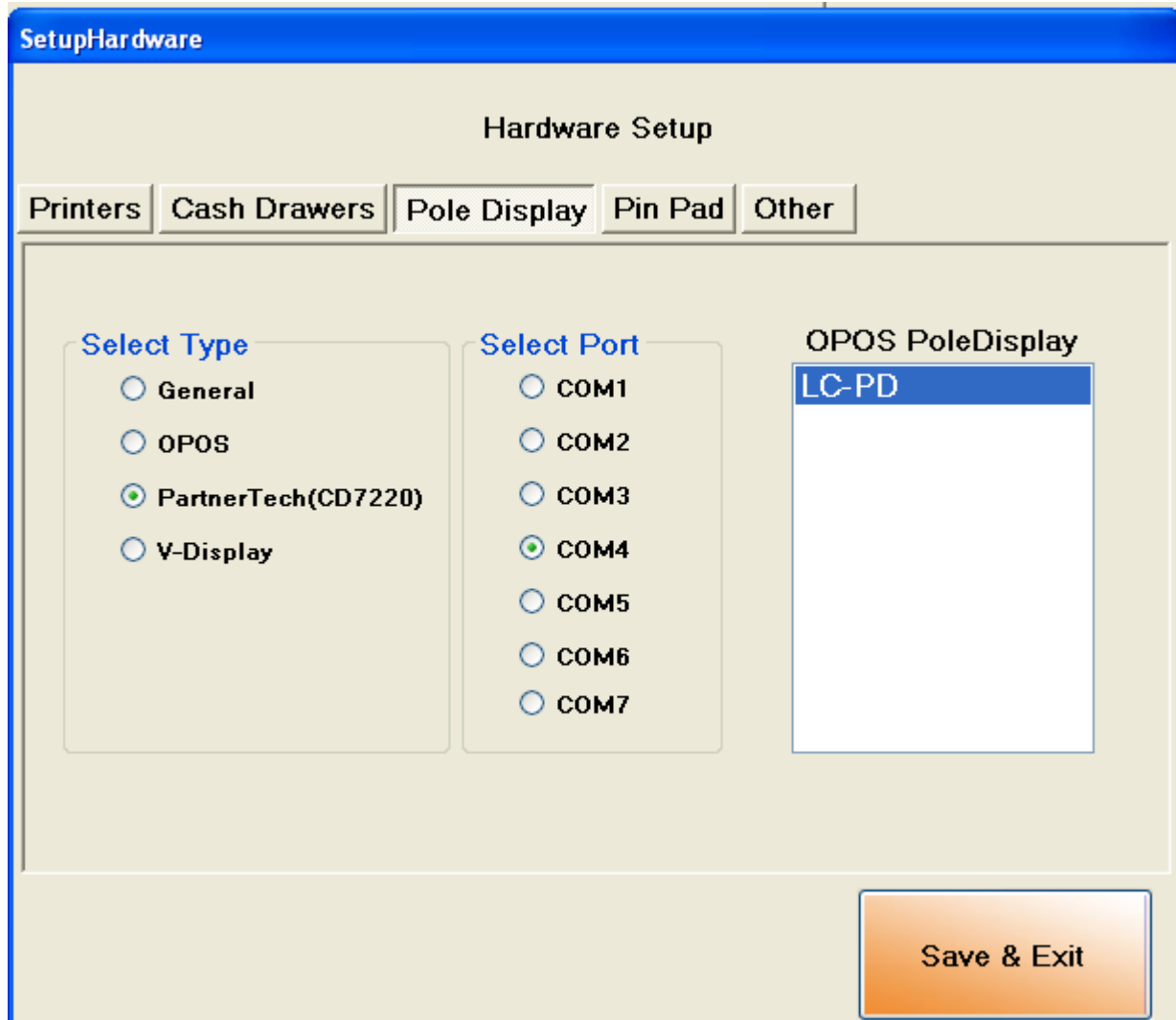


Step 2: Plug the serial port into the computer. Take note of which port you plugged into. If it is the only port, remember “COM1”

Step 3: Open up Corner Store and go to Main > Setup > Hardware Setup > Pole Display



Step 4: Select CD7220. Then for the COM port, select the port that matches the one you have. You need not to select a pole display on the right box. Click Save & Exit.



You have now set up the Possiflex PD 2600 with Corner Store