

INTERNATIONAL POINT OF SALE

Instructions for setting up Samsung SPT 4700 and Hardware



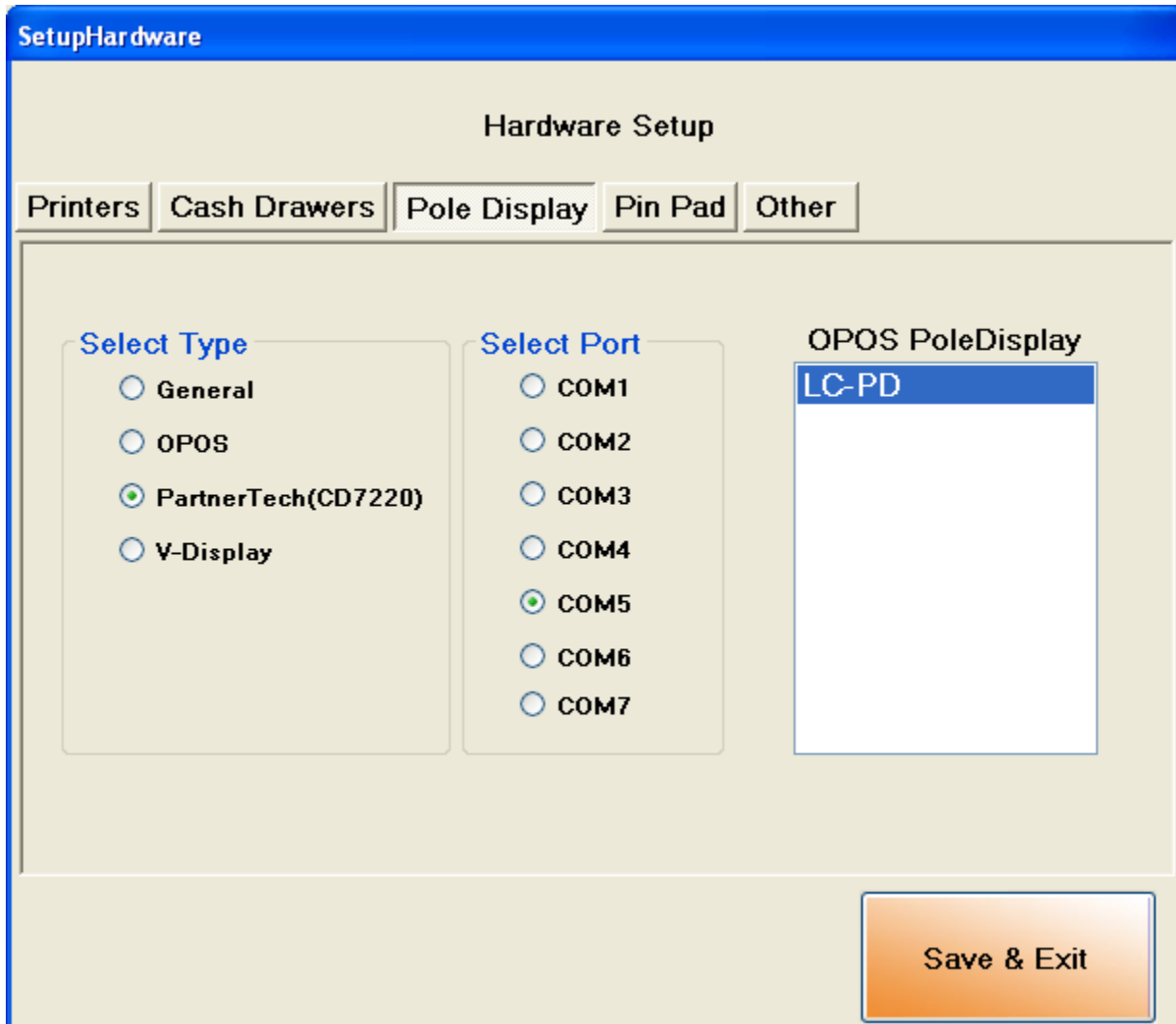
This guide will explain in detail how to set up the BTP-R880NP Printer/Drawer and Sam4s pole display with CornerStore.

SAM4s SPT4700 is not compatible with POSReady2009

Setting up the Pole Display (Sam4s)



The pole display requires almost no set up. Just plug in the RJ-45 slot behind the monitor. Open up CornerStore and go to **Main > Setup > Hardware Setup > Pole Display**. Select **PartnerTech(CD7220)** and select **COM5** as the port. Click **Save & Exit**.



Setting up the Printer and Cash Drawer (BTP-880NP)

Make sure CornerStore is closed during this installation

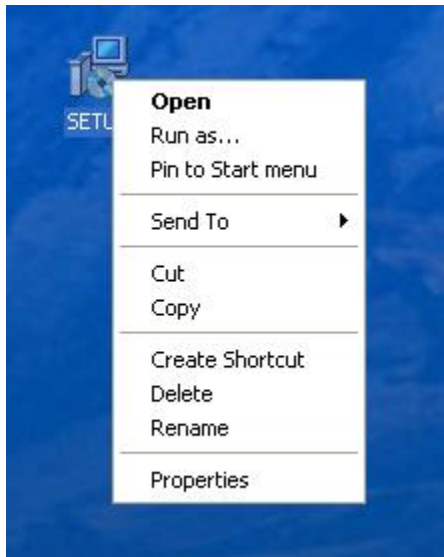
Step 1: Plug in the Printer into the slot designated **COM1** under the computer OR plug the USB into the computer and printer.

Step 2: Plug in the cash drawer into the **printer's RJ-11 port**.

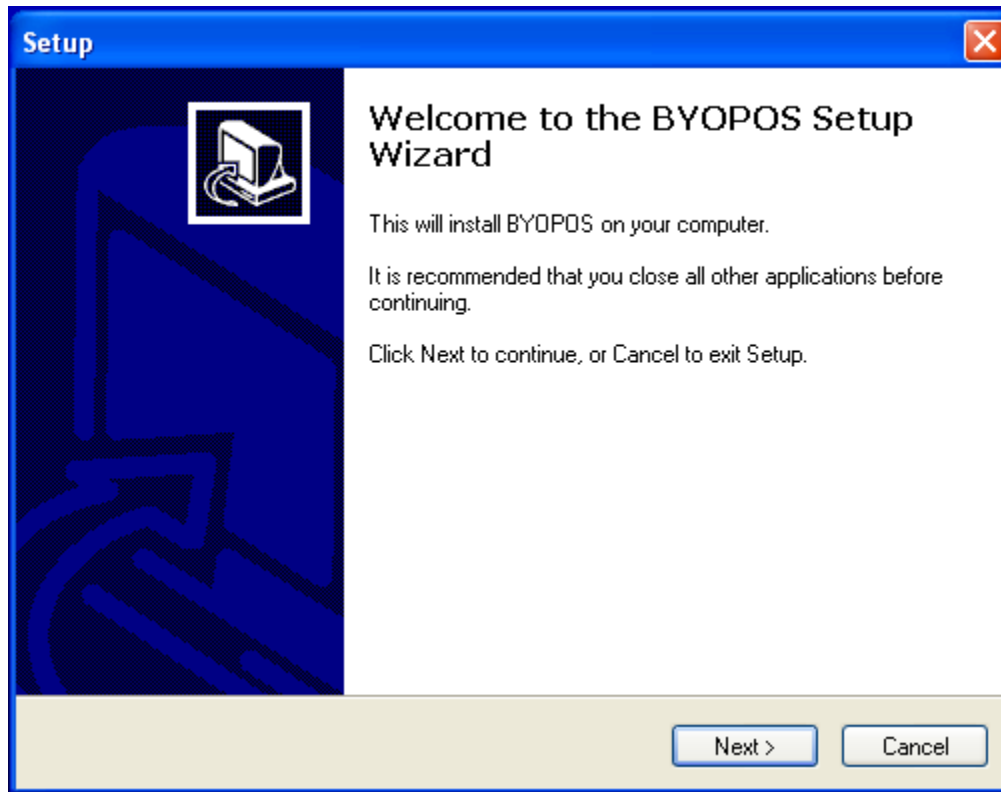
Step 3: Download the file from

http://cornerstorepos.com/downloads/hardware/Sam4s_V2.68.zip

Step 4: Run the Setup file

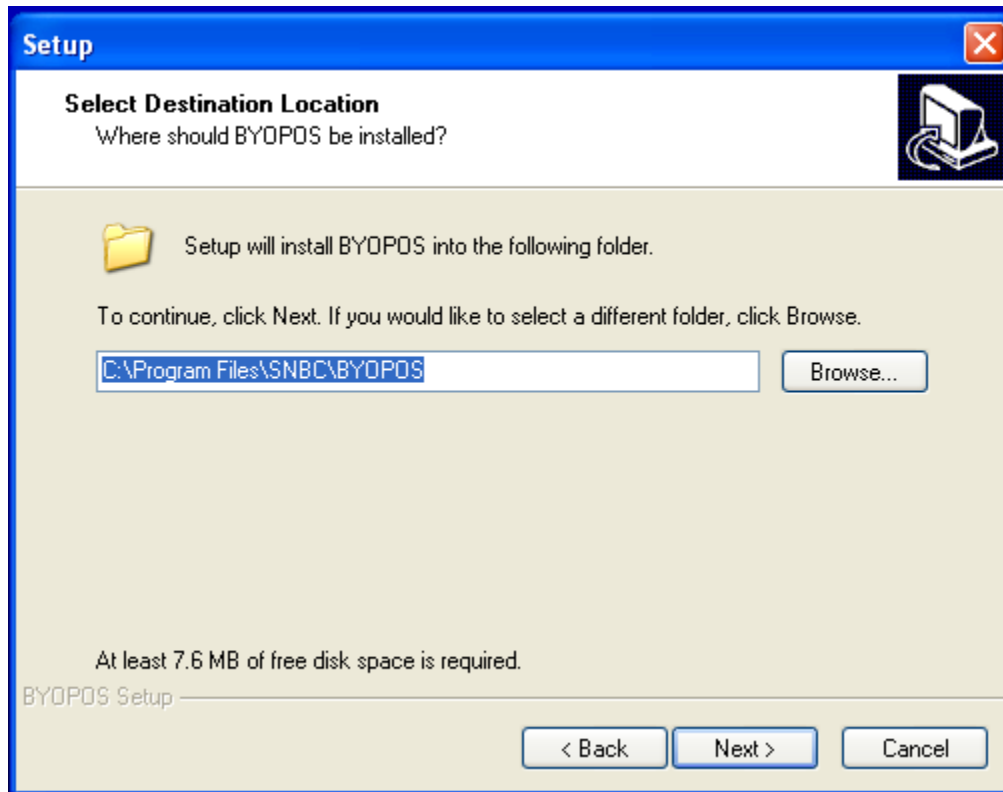


Step 5: Click Next

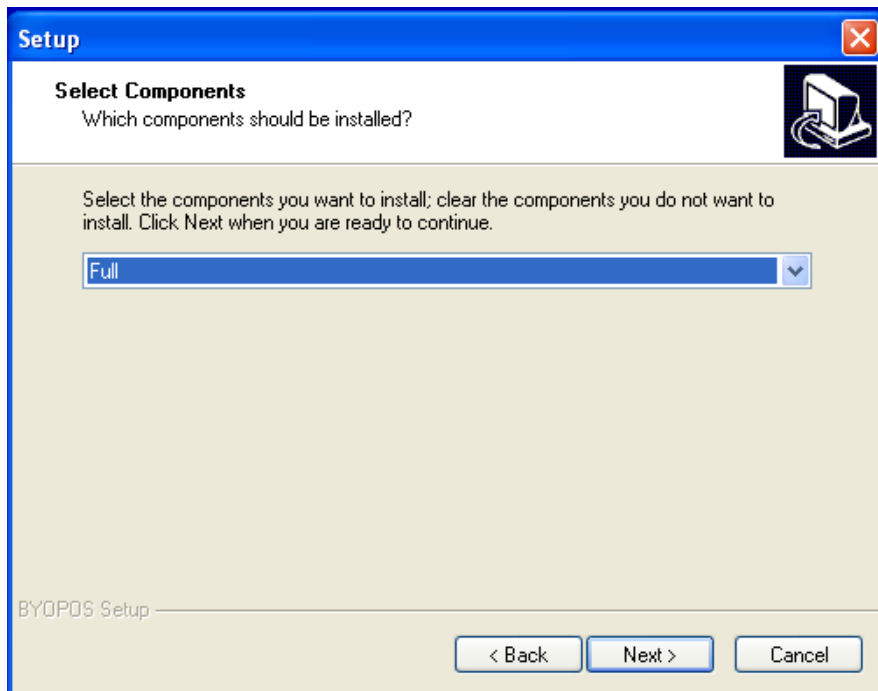


Step 6: Check I accept and click Next.

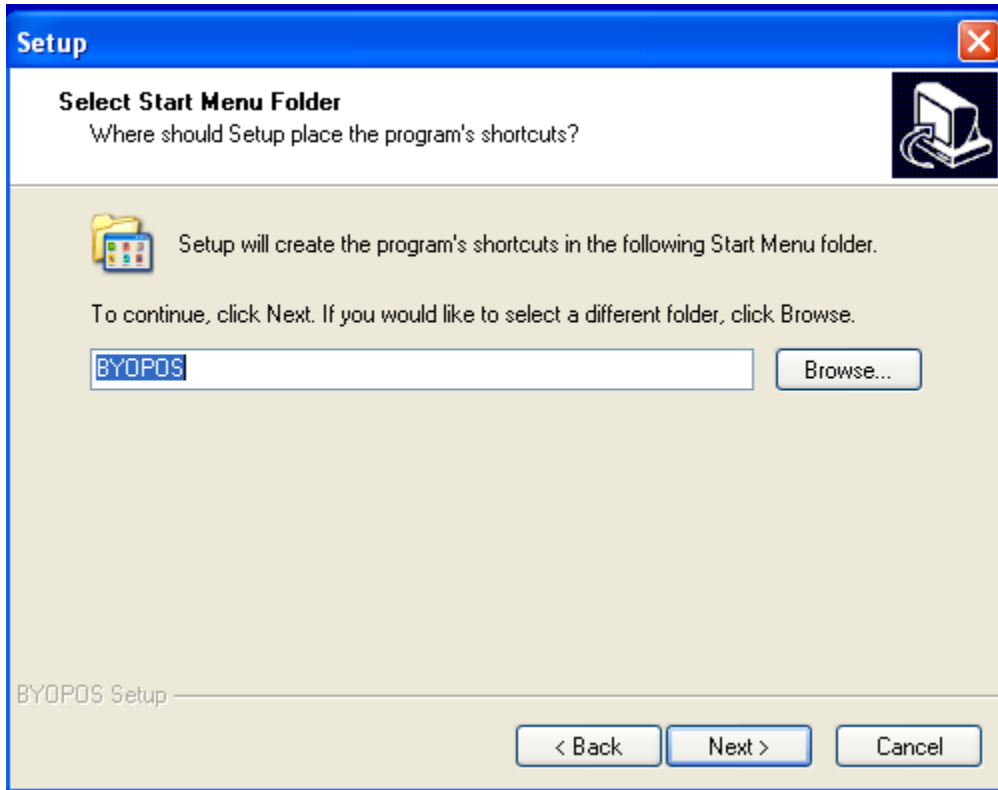
Step 7: Click Next



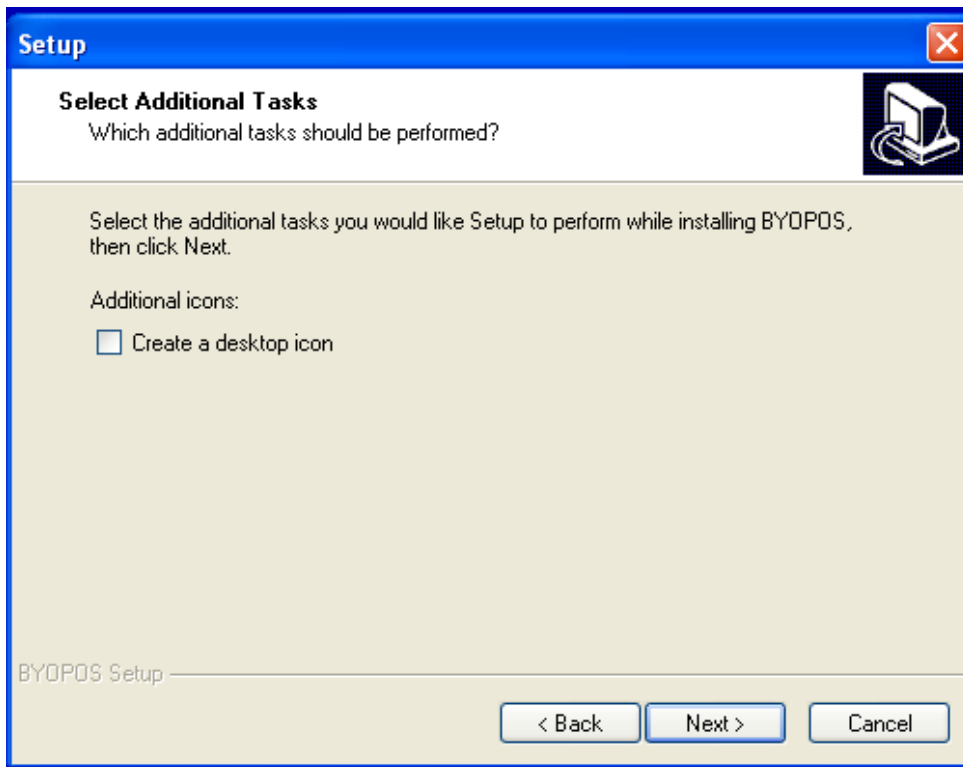
Step 7: Click Next



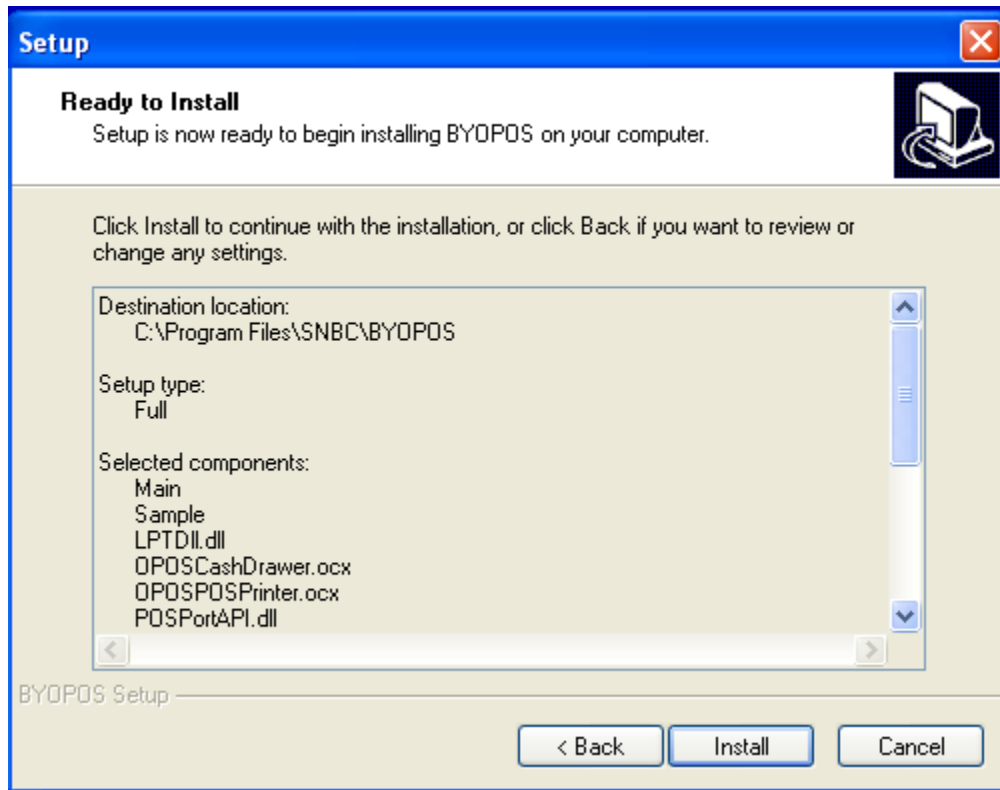
Step 8: Click Next



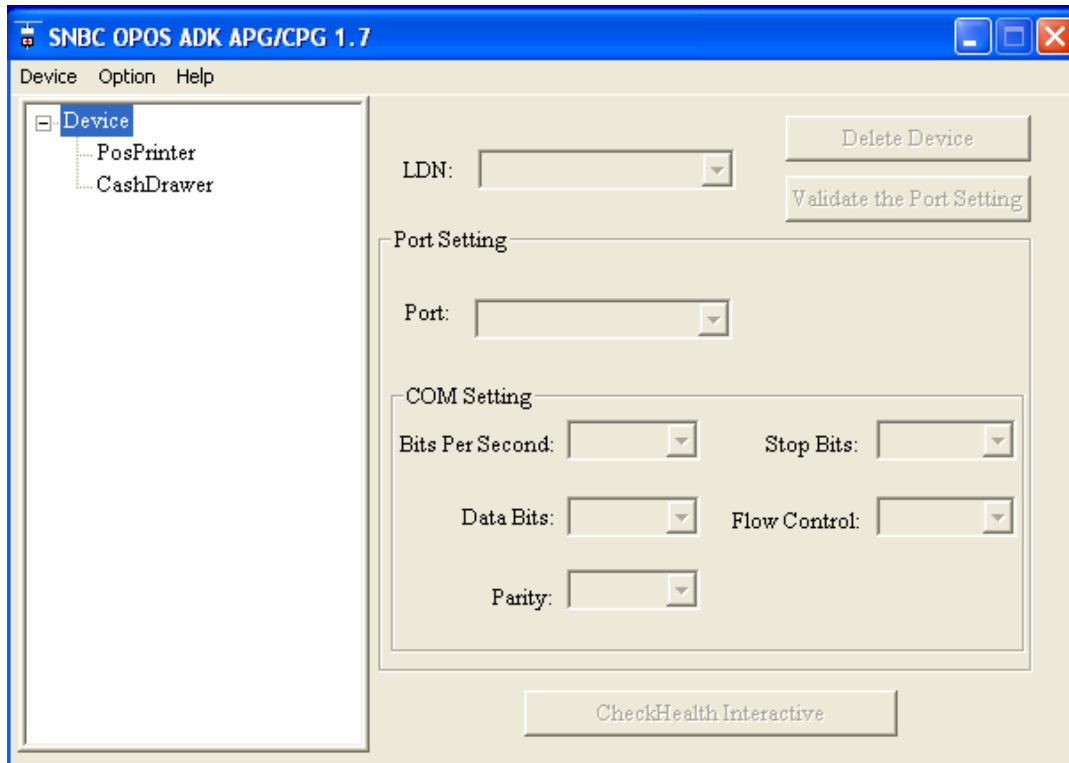
Step 9: Click Next



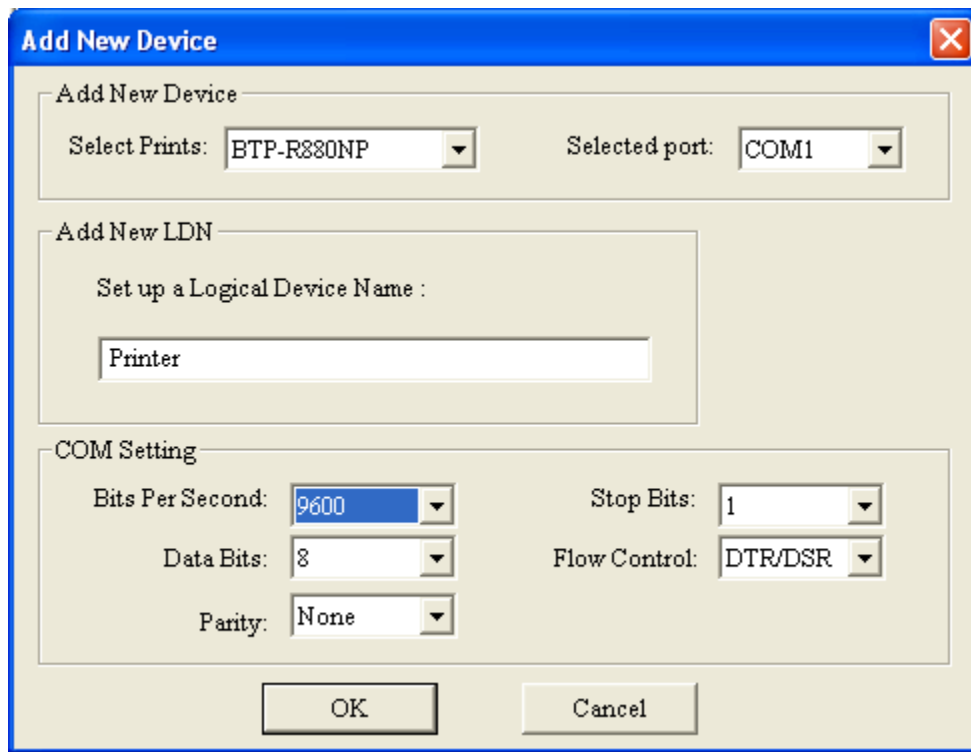
Step 10: Click Install



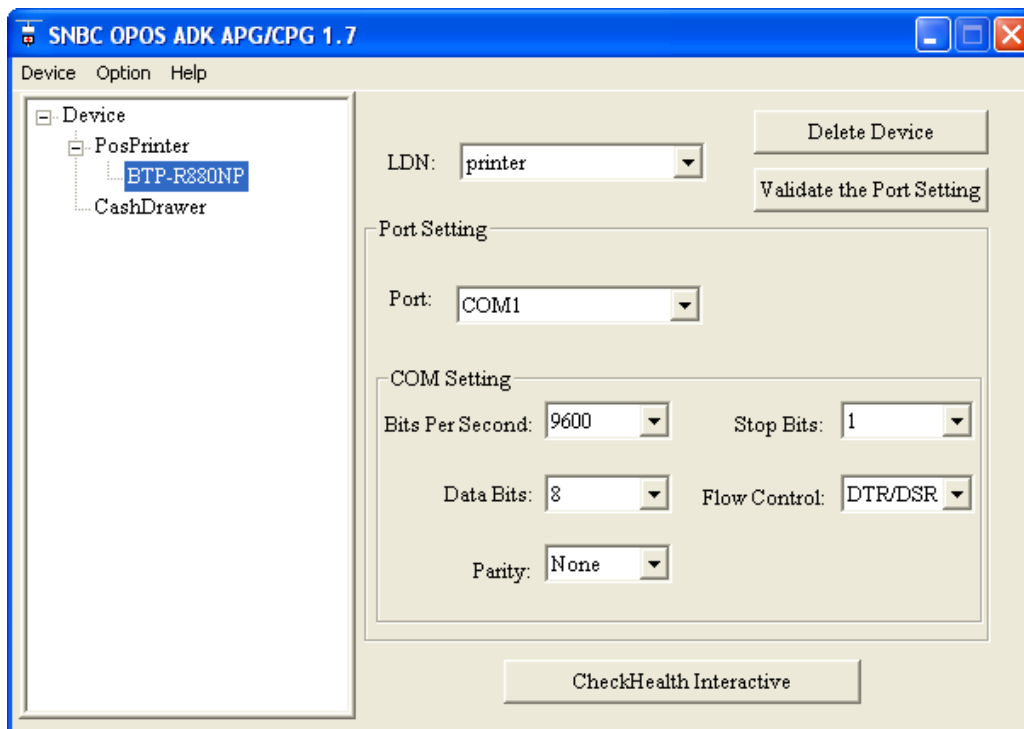
Step 11: The window should Pop up, click Device and click Add Printer.



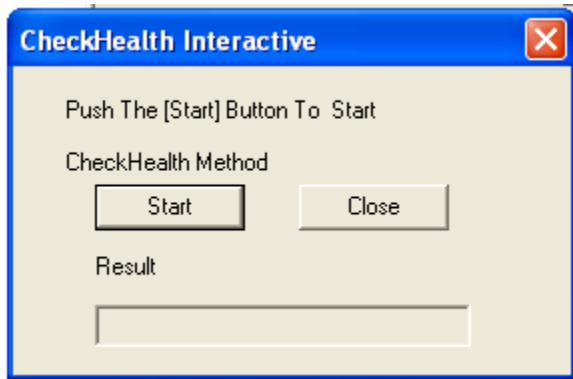
Step 12: Select **BTP-R880NP** as the Printer, **COM1** as the port if you are using a serial connection, **USB** if you are using a USB connection (a prompt will look for it), give the device a **logical name** and set the **Bits Per Second to 9600**. Make sure your window looks like this, click **OK**.



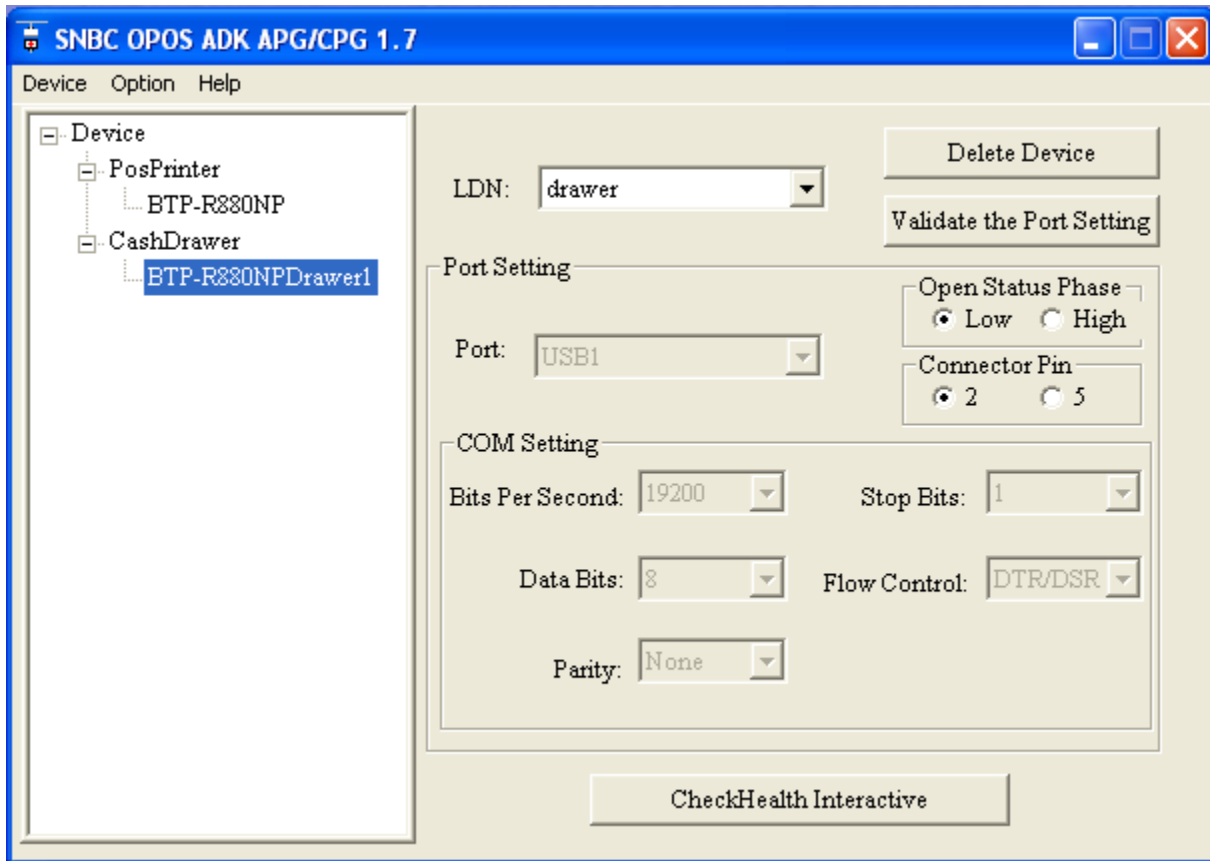
Step 13: Click **POS Printer** then click the **BTP-R880NP**. Click **Check Health**



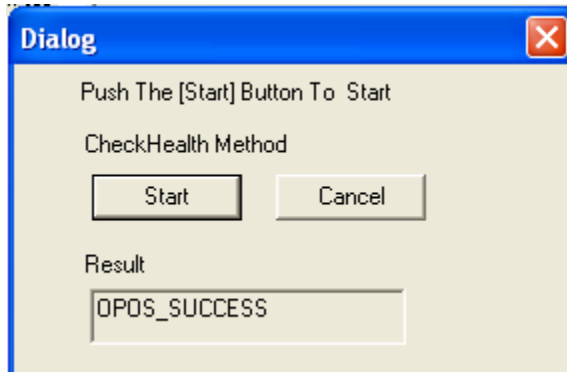
Step 14: Click **Start**, it should say **OPOS SUCCESS**



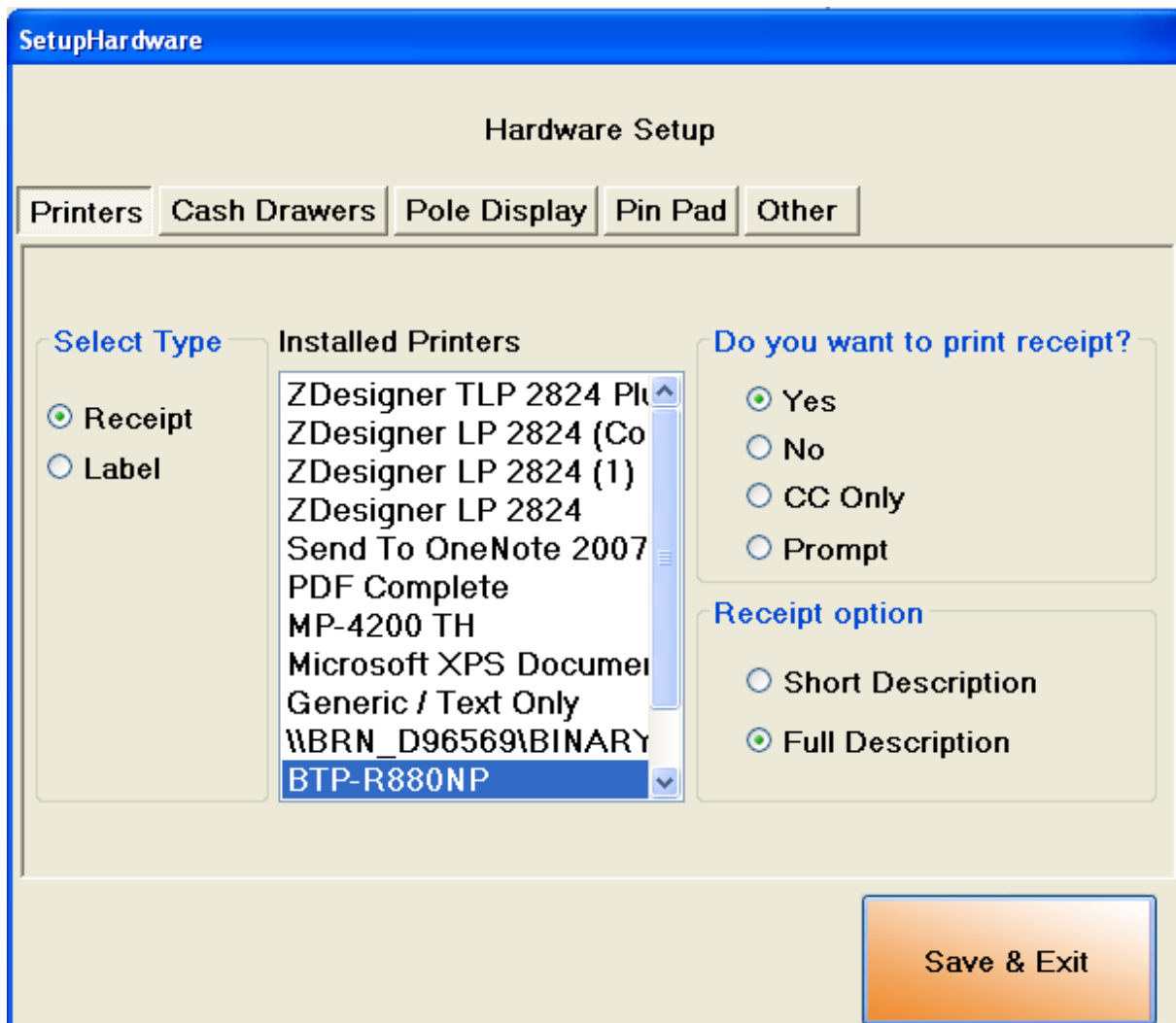
Step 15: Click **Device** then **add CashDrawer**, **select the printer** you have just set up for the proper port. And **type in a name** for the drawer. Click **OK** when you are done.



Step 16: Click **CashDrawer** then select the **BTP-R880NPDrawer1** then click **CheckHealth Interactive**. Click **Start**, a **success message** should appear.



Step 17: Open up **CornerStore** and go to **Main > Setup > Hardware Setup**. Click on **Receipt** for printer type. Select the **BTP-R880NP** printer, and **select your choice of receipt option** and a **Full or Short receipt description**.



Step 18: Click on the **Cash Drawers** tab, select the **BTP-R880NPCashDrawer1** and click **Save & Exit**.

