

INTERNATIONAL POINT OF SALE

Installation Instructions for the SNBC Printer

Windows driver installation



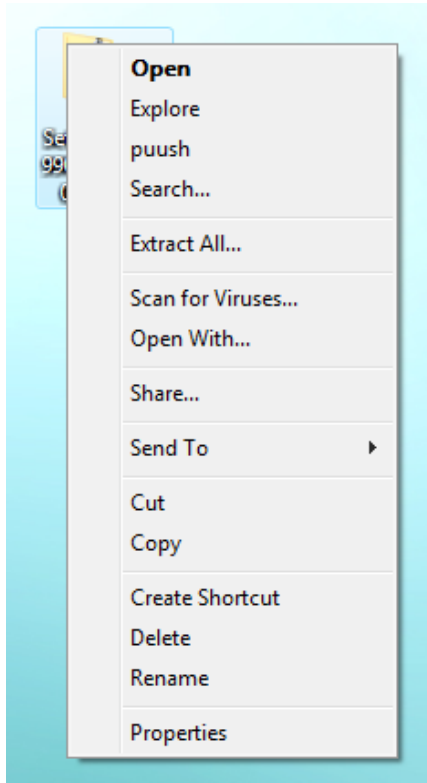
These instructions will go over how to install the windows drives for the SNBC printer, along with setting the printer up with CornerStore.

Downloading and Installing the Drivers:

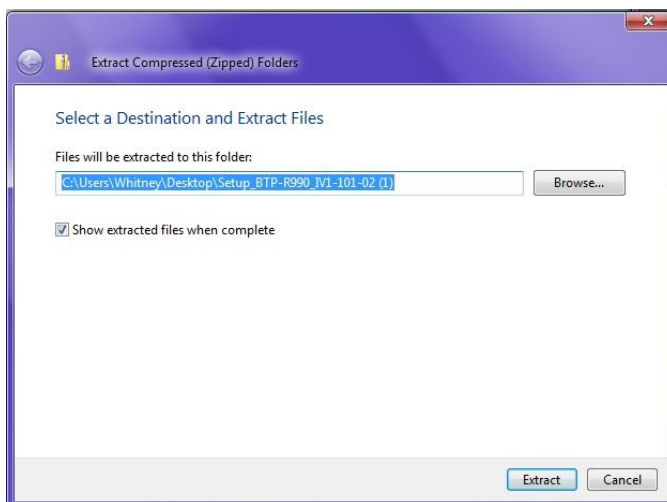
Step 1: Download the Drivers here:

http://cornerstorepos.com/downloads/hardware/Setup_BTP-R880NP_V1.06.zip

Step 2: Right click the folder and click **Extract All...**

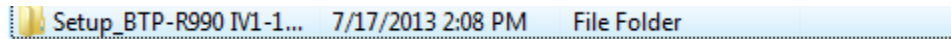


Step 3: Click Extract.

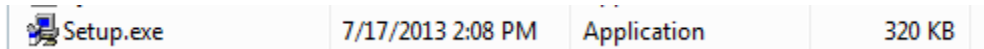


International Point of Sale: CornerStore POS

Step 4: The folder window should now appear. **Open** the containing folder.



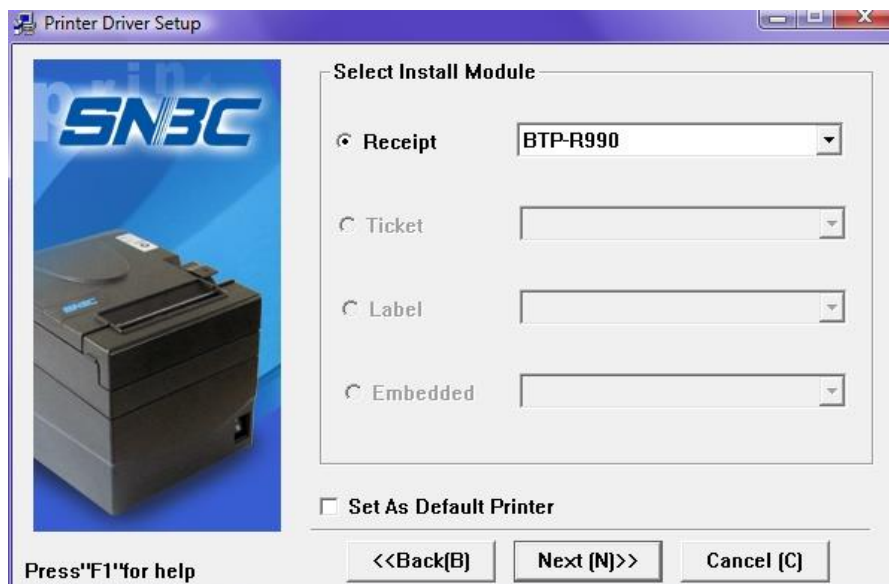
Step 5: Click and Run the Setup.exe file.



Step 6: Click **I Accept**, then click **Next**.

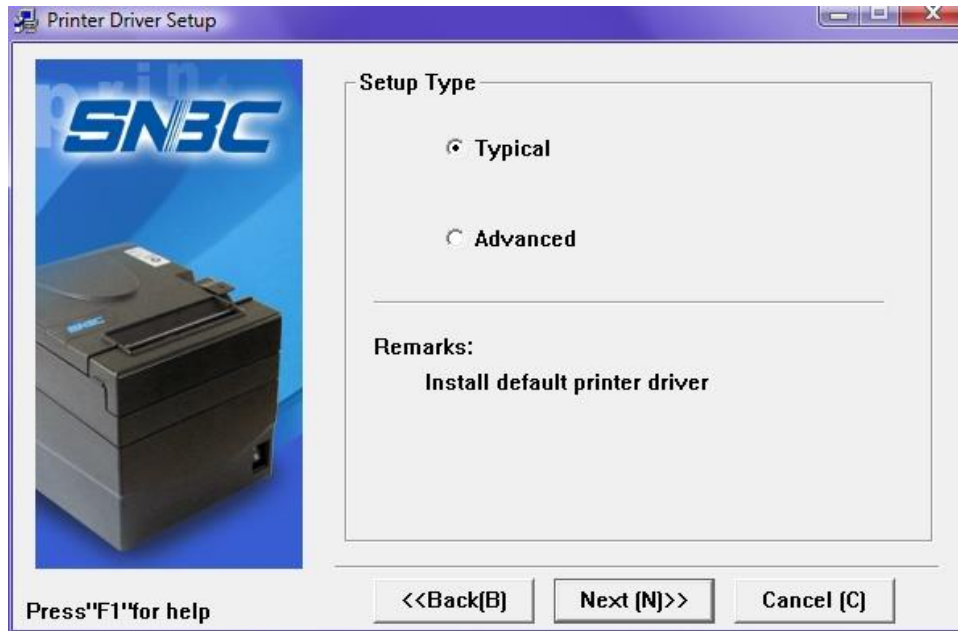


Step 7: Make sure your receipt printer model matches the one in the window. Press **Next**.

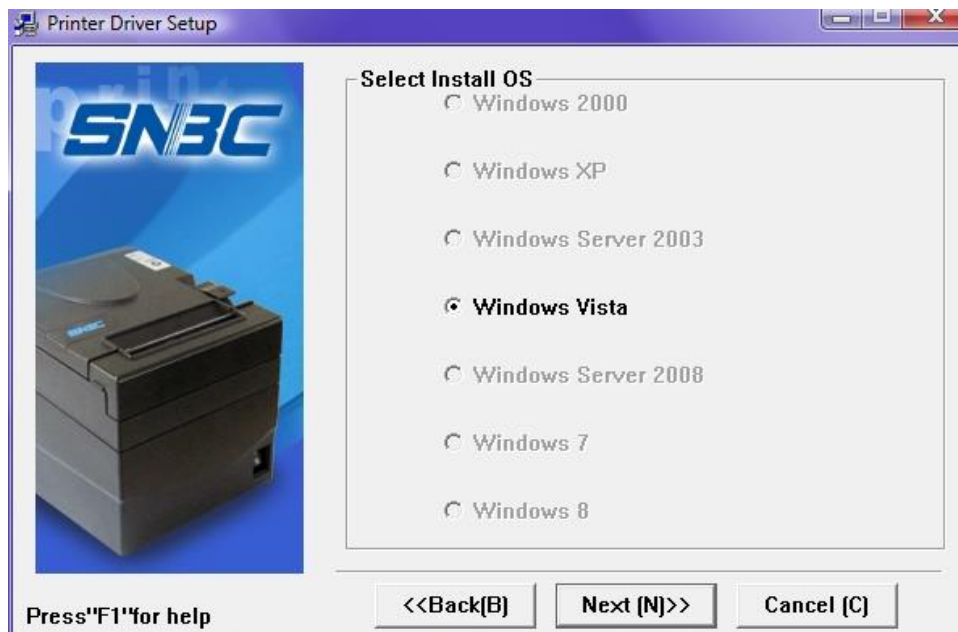


International Point of Sale: CornerStore POS

Step 8: Make sure **Typical** is selected. Press **Next**.

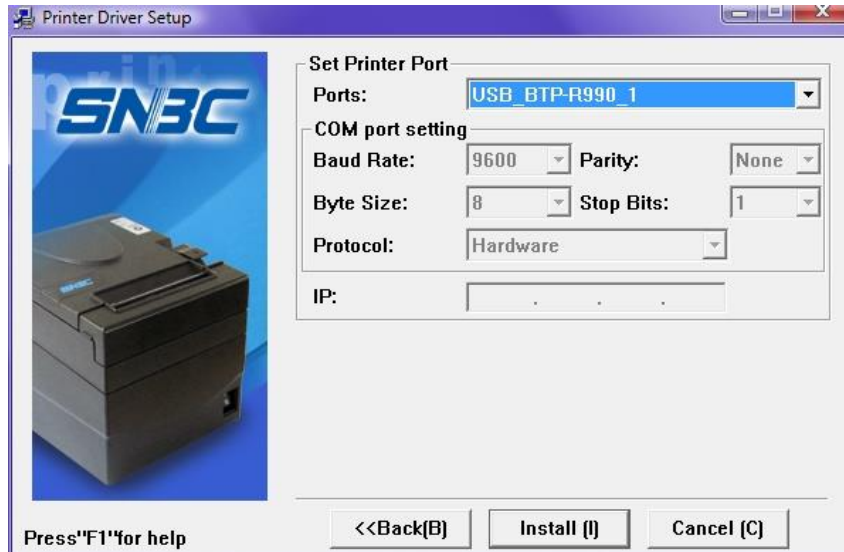


Step 9: Make sure the operating system you have matches the one selected. Press **Next**.

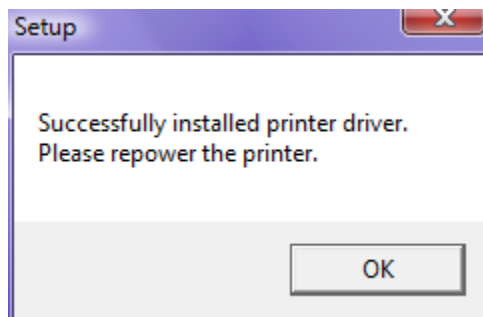


International Point of Sale: CornerStore POS

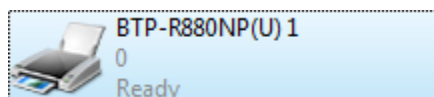
Step 10: Under Ports, select **USB**. Your printer model will follow the USB written in the box. Press **Install**.



Step 11: Turn off your printer and turn it back on. Press **Ok**.

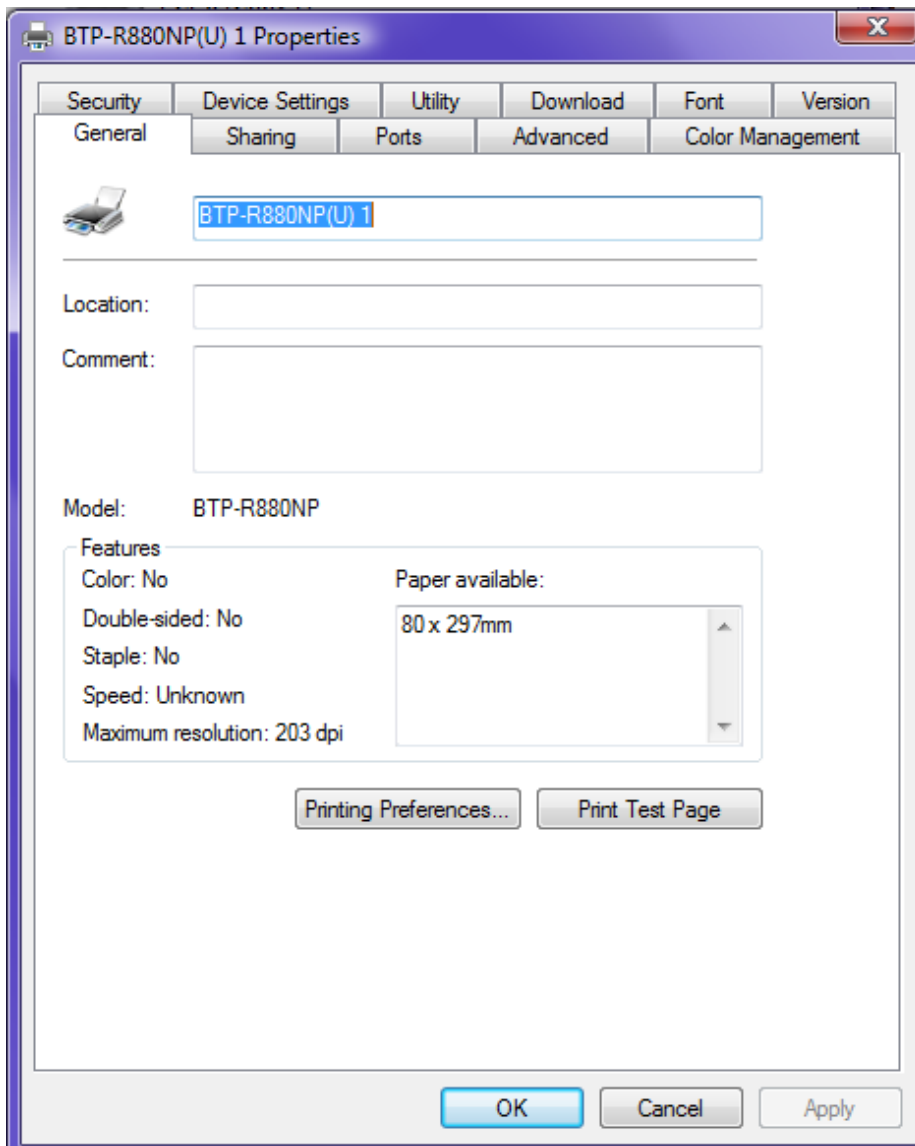


Step 12: Go to your **Control Panel** and select **Printers**. Locate your printer, make sure it is Online.



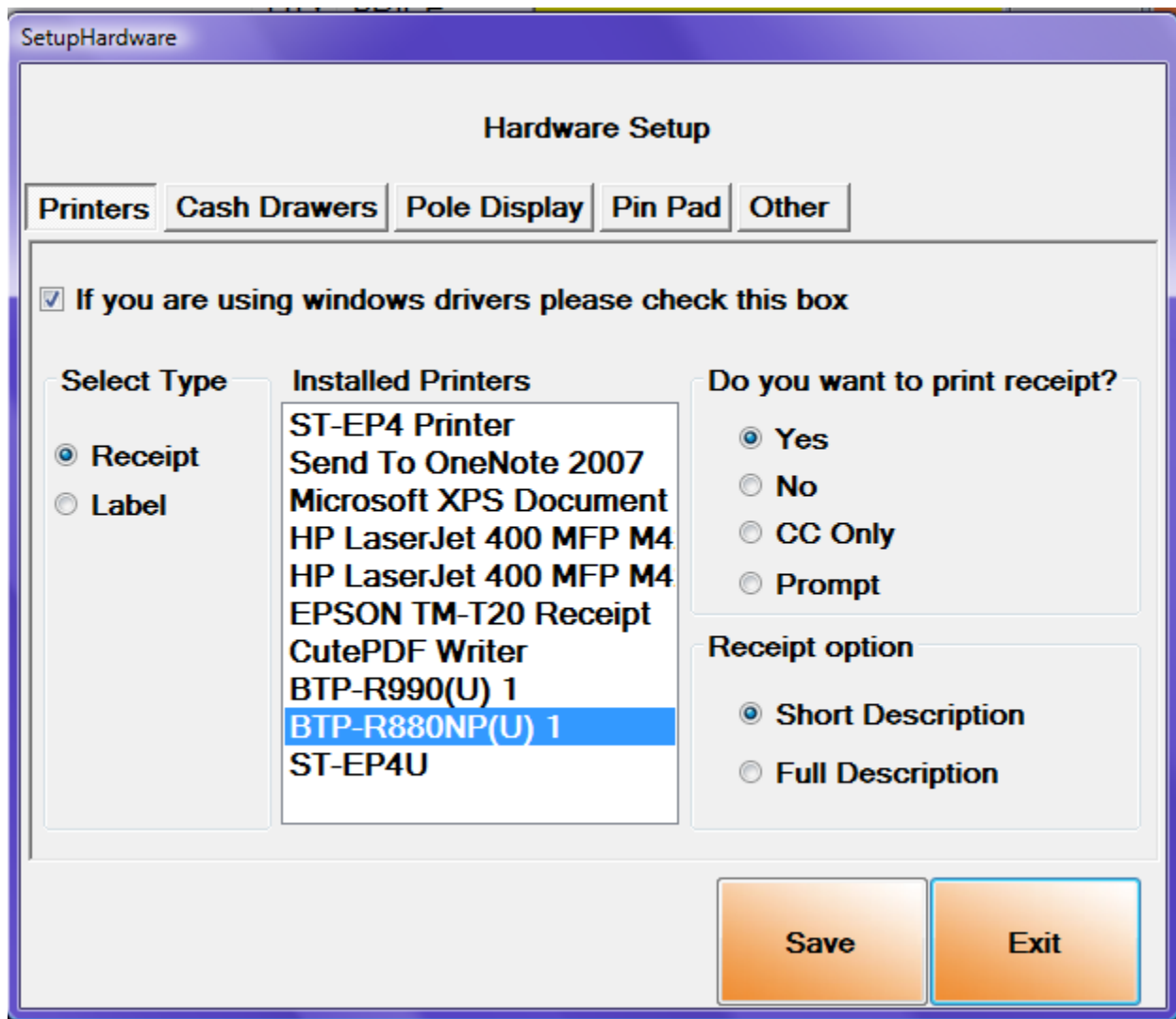
International Point of Sale: CornerStore POS

Step 13: Right Click and select **Properties**, then **press Print Test Page**. If it prints out then you have set up the printer correctly



Setting the Printer Up with CornerStore

Go to **Setup > Hardware Setup** from the main screen. Under the **Printers** Tab select “**If you are using windows drivers please check this box**”, select the printer in the Installed Printers Box and select your receipt options.



Your printer is now ready to be used with CornerStore