

INTERNATIONAL POINT OF SALE

Installation instructions for the LD1000 USB pole displays with CRE/RPE



Corner Store POS supports Logic Control Pole Display. This document will detail the process of installing the correct drivers and then setting up in Corner Store POS.

Installing Appropriate Drivers

NOTE: Please leave Pole Display disconnected for driver installation!

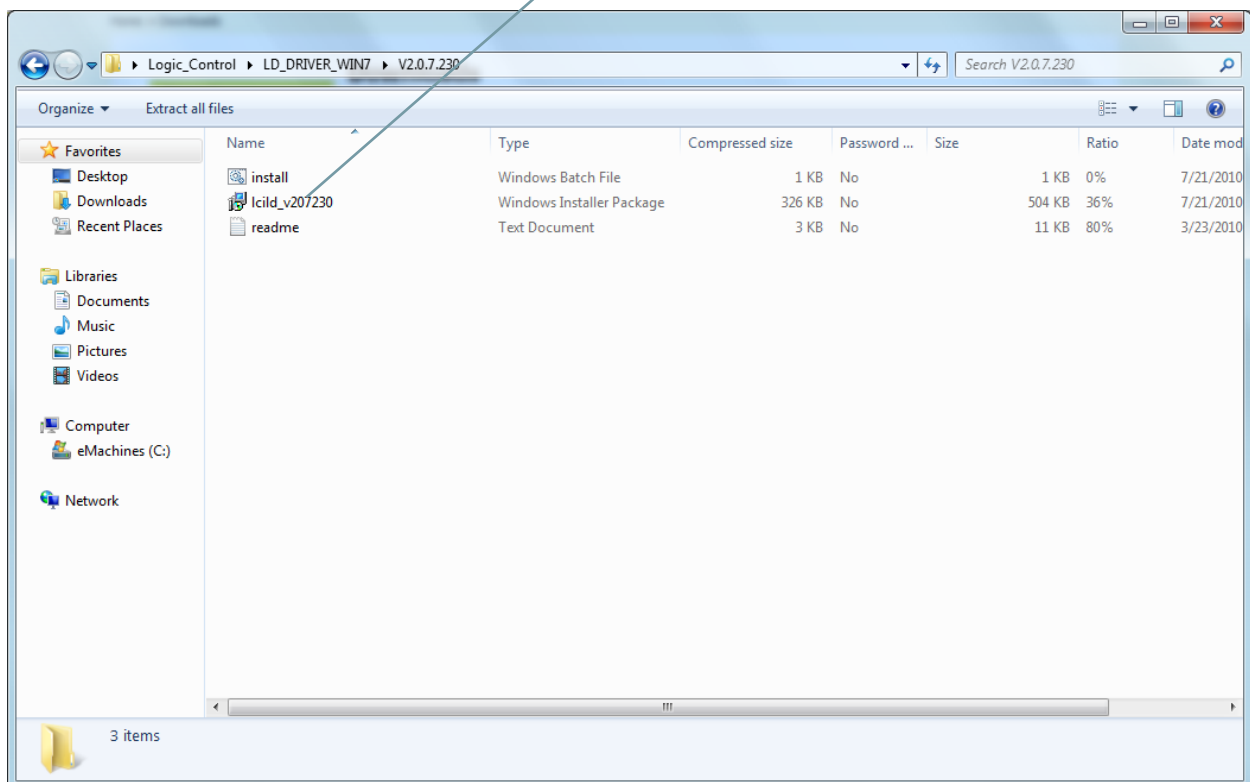
1. The Logic Control PD USB driver can be downloaded at:
For Windows XP/VISTA:

http://cornerstorepos.com/downloads/hardware/LC_USB_Display_Windows_Driver_XP_VISTA.zip

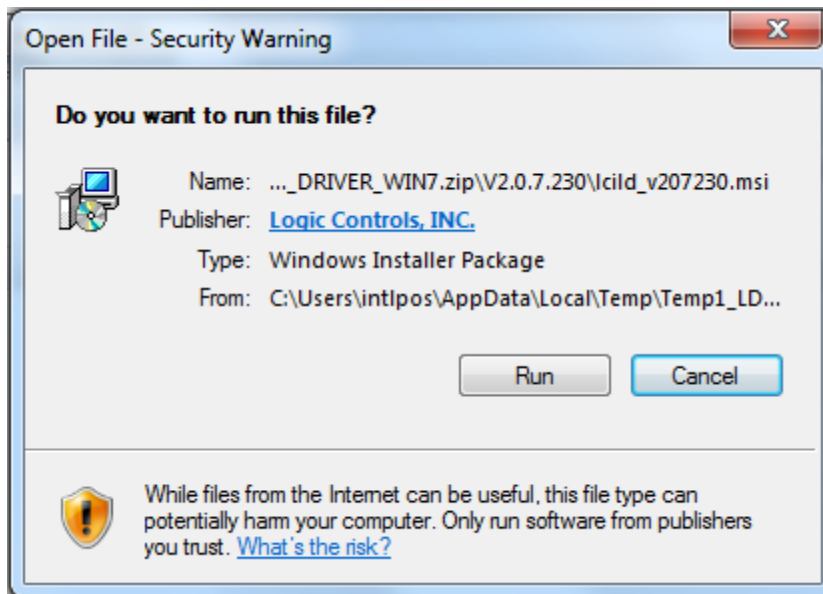
For Windows 7

http://cornerstorepos.com/downloads/hardware/LC_USB_Display_Windows_Driver_7.zip

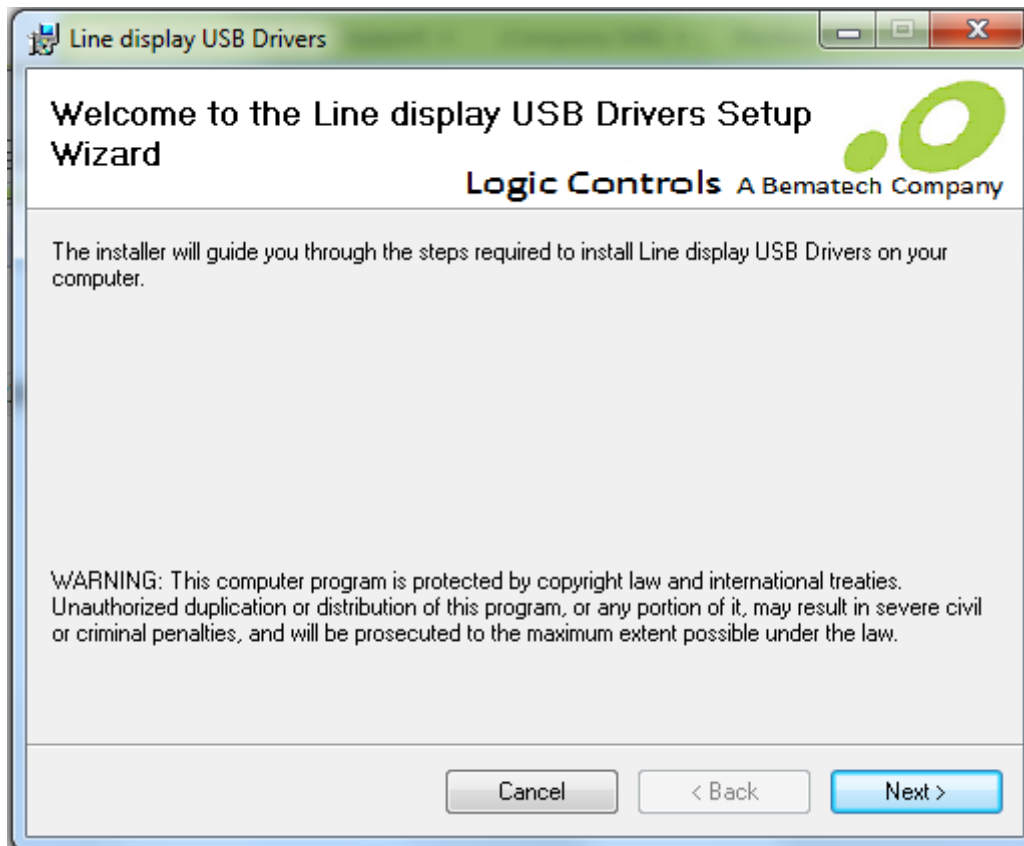
2. Unzip the folder and double click on **lcild_v207230** to begin the installation of drivers.



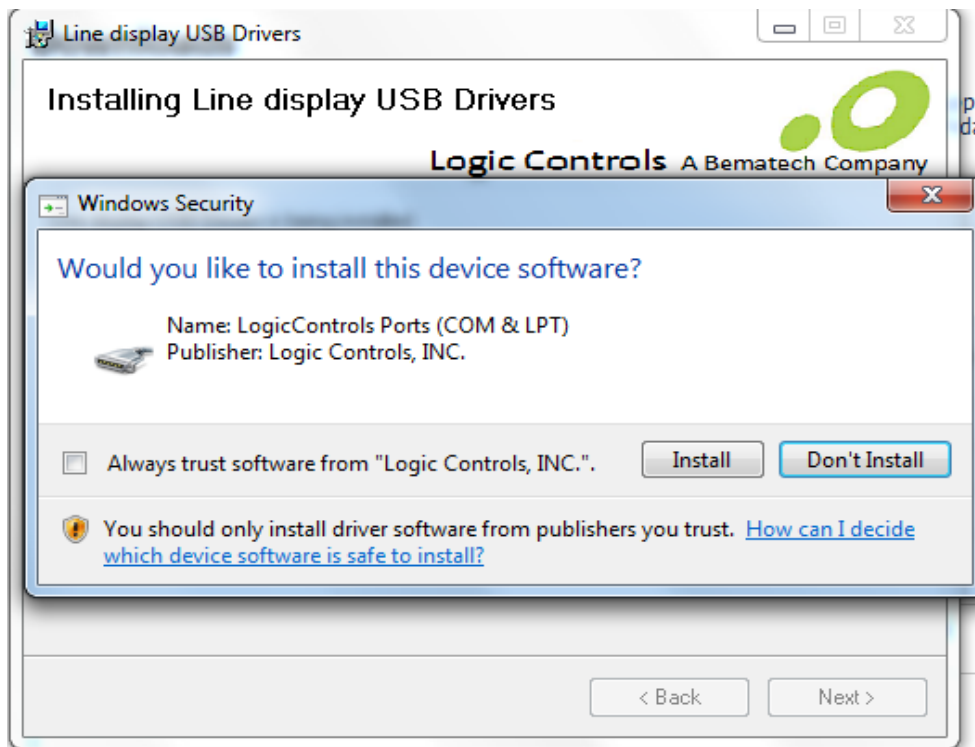
3. When prompted select **Run**.



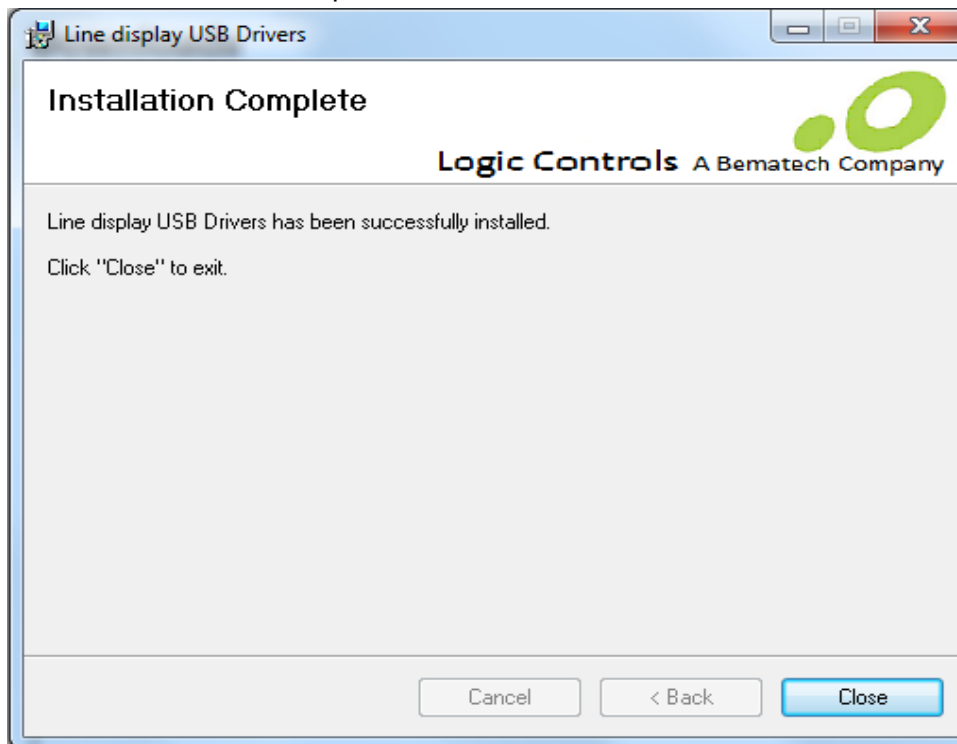
4. Select **Next** to begin installing Line display USB Drivers on your computer.



5. Select **Install** when it asks to install this device software.



6. Select **Close** to complete the installation.



Determining the COM port that the LD 1000 has been installed on

1. Go to Start>Right click on Computer (or My Computer)>Select Manage
2. Select Device Manager>Expand Ports or Other>You will find LCI Line Display (COM1, COM2 ...)
3. Open CRE/RPE
4. Select the **Options/Manager** and enter your password (where applicable).
5. Select **Setup** and then **Setup Screen** and re-enter your password if necessary.

Setup Screen

Account Control Company Info Couponing Hardware Internet Features Inventory Invoice Settings

Payment Processing Quick Invoicing & Alerts Quick-Add Receipt Reports

Restaurant Features Station Specifics System Access Touch Screen

Page 1 Page 2 Page 3

Pole Display Port

None
 COM1
 COM2
 COM3
 COM4
 COM5
 USB
 Other

Pole Display Type

General
 Casio / Touch Dynamic
 Virtual(Classic)
 Posiflex
 Toshiba
 OPOS
 Virtual(New)

OPOS Pole Display
PoleDisplay Port
NONE

PinPad Port

None
 COM1
 COM2
 COM3
 COM4
 COM5
 COM6
 Other

PinPad Type
None

PinPad Connection
Serial

PinPad IP Address

PinPad IP Port
0

Weight Scale - Primary

None
 COM1
 COM2
 COM3
 COM4
 COM5
 COM6
 Other

Primary Scale Type
CAS PD-1 or PD-2

Weight Scale - Secondary

None
 COM1
 COM2
 COM3
 COM4
 COM5
 COM6
 Other

Secondary Scale Type
CAS PD-1

Cash Drawer

Cash Drawer
 Open Default Drawer
 Open Employee Drawer

Default Cash Drawer Port
NONE

Check drawer open status (Epson TM-T88 only)

Scale **Update** **Exit**

6. Select the **Hardware** tab and choose the correct COM port for the **Pole Display Port**.
7. Under **Pole Display Type** select **General**.
8. Select **Update** at the bottom of the screen to save your changes.

Now login to CRE/RPE and enter an item onto the invoice and check the Pole Display, it should show the item you just rang up.

Your USB Pole Display is now setup and ready to be used.