

INTERNATIONAL POINT OF SALE

Zebra LP 2824 Plus Label Printer Installation Manual



This detailed manual will help you download the printer drivers, install the drivers, and help set up how to print labels in Cornerstore.

Installation Instruction for Zebra LP 2824 Plus Label Printer

Download the Zip file from the Corner Store Website:

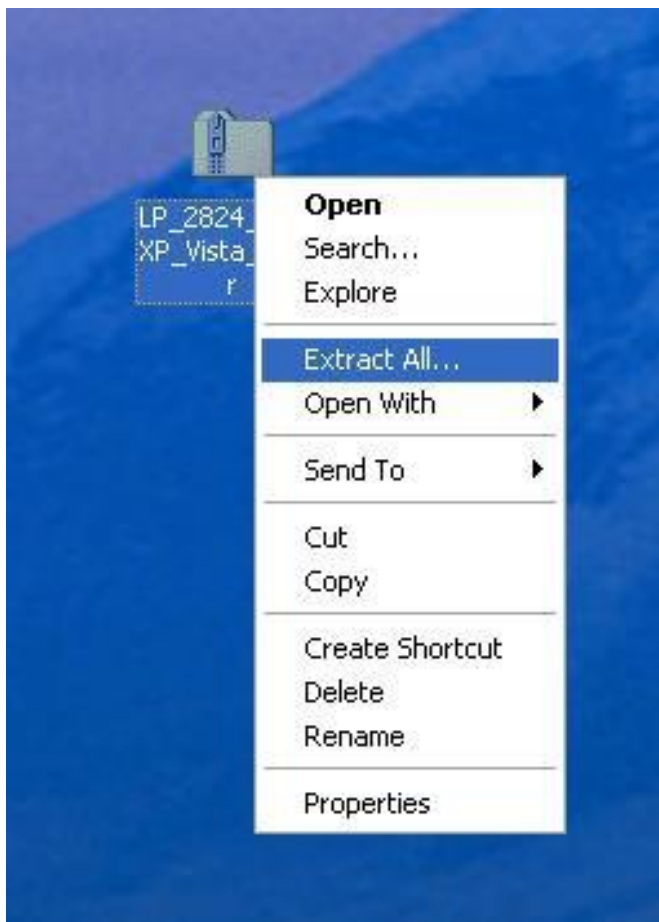
If you are using Windows XP or Windows Vista, download this driver:

http://www.cornerstorepos.com/downloads/hardware/LP_2824_Plus_XP_Vista_Driver.zip

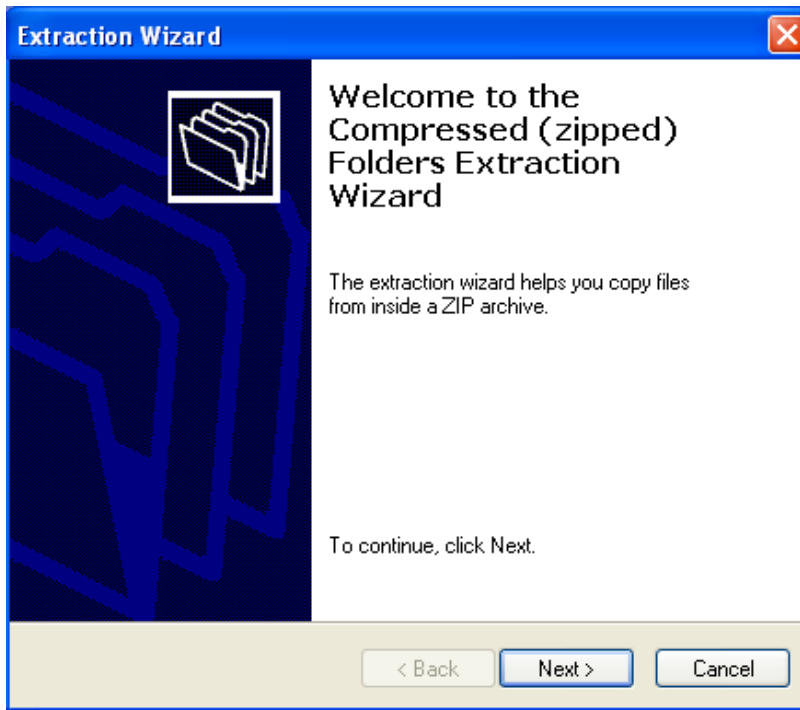
If you are using Windows 7, download this driver:

http://www.cornerstorepos.com/downloads/hardware/LP2824_Plus_Win7.zip

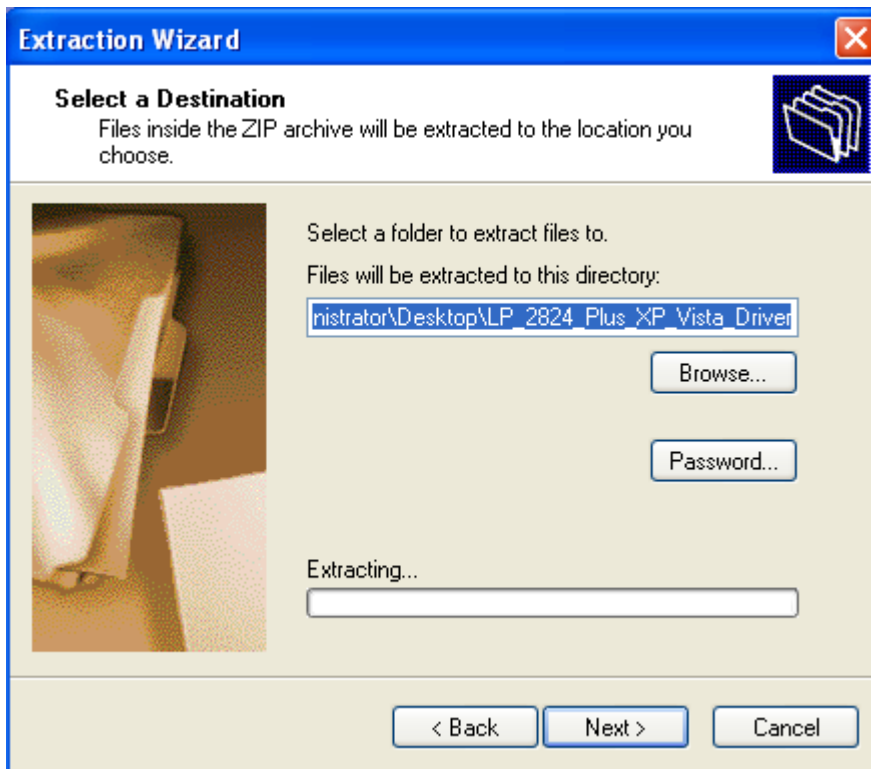
Step 1: Right click the ZIP folder and select **Extract All...**



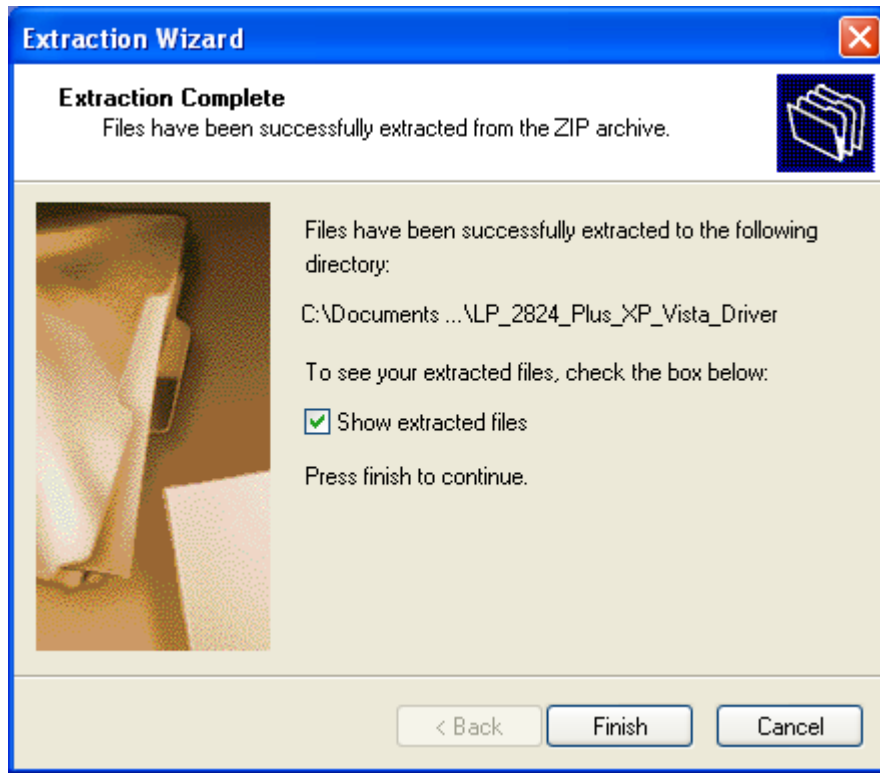
Step 2: Click **Next**.



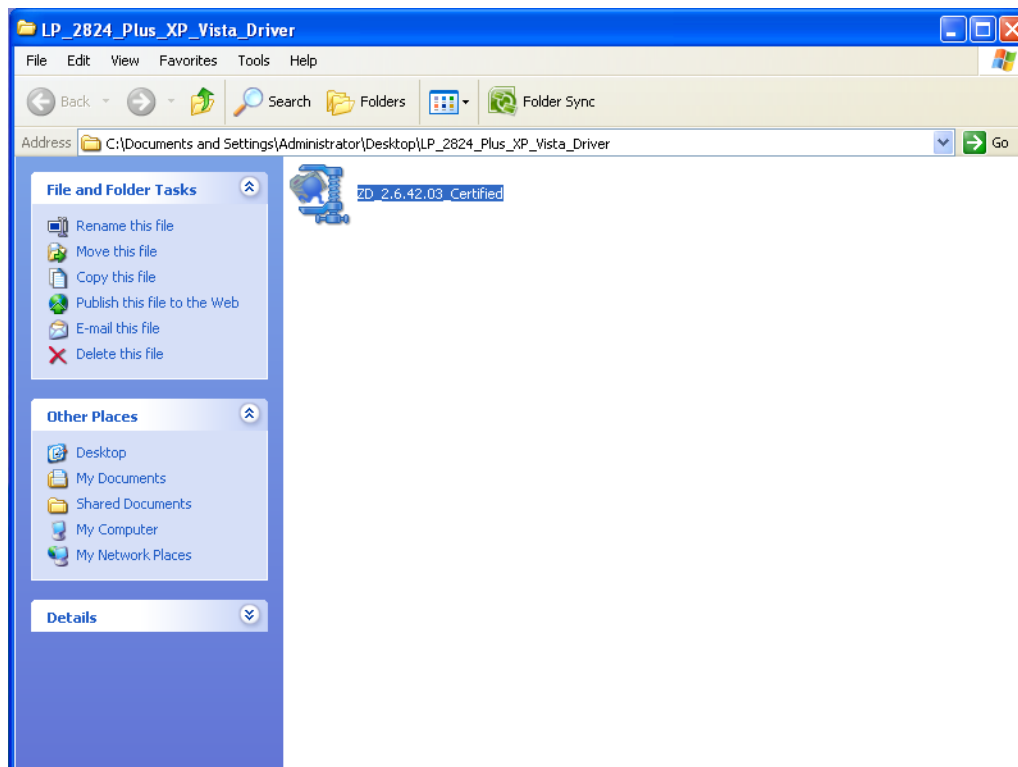
Step 3: Click **Next**.



Step 4: Click **Finish**.



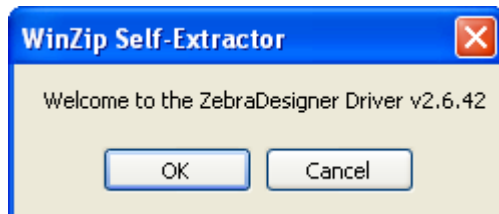
Step 5: Click on the file **ZD_2.6.42.03_Certified** and open it.



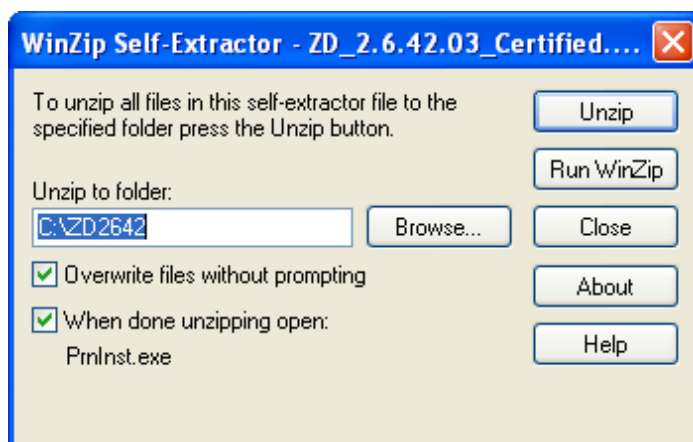
Step 6: Click **Run**.



Step 7: Click **Ok**.



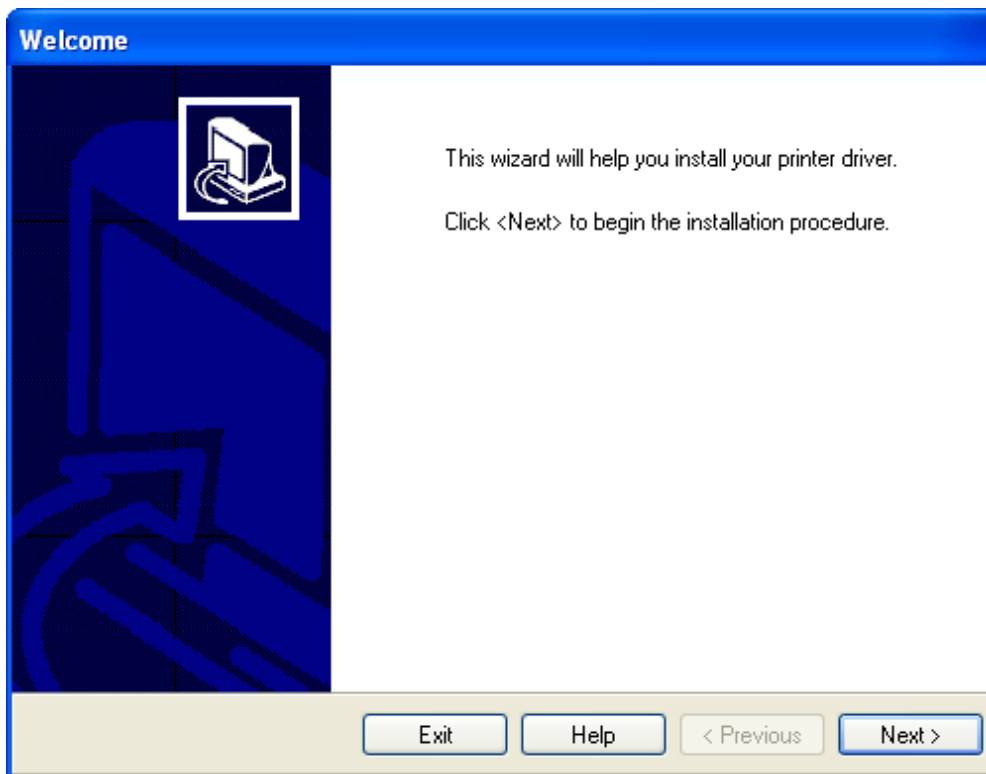
Step 8: Click **Unzip**.



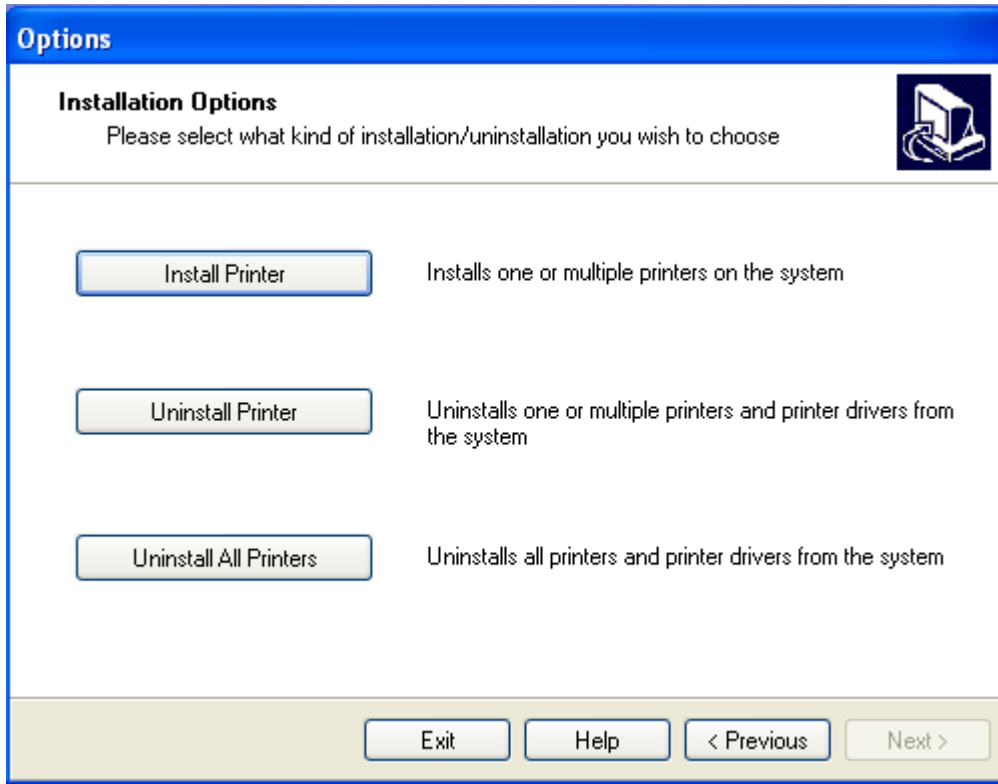
Step 9: Click **OK**, the next prompt should open up automatically.



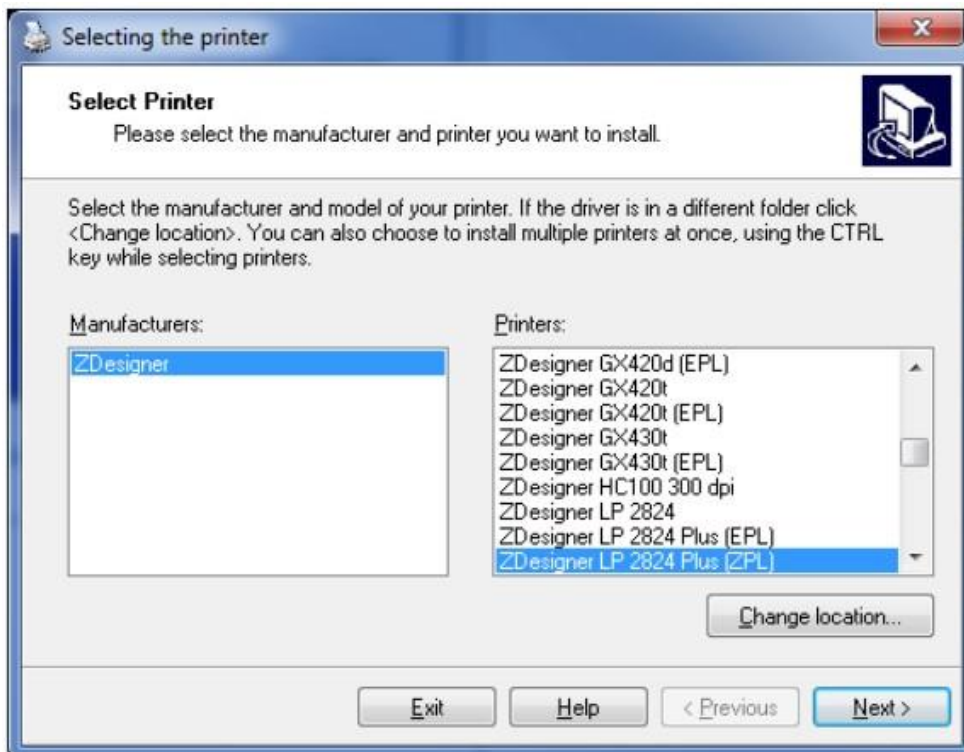
Step 10: Click **Next >**



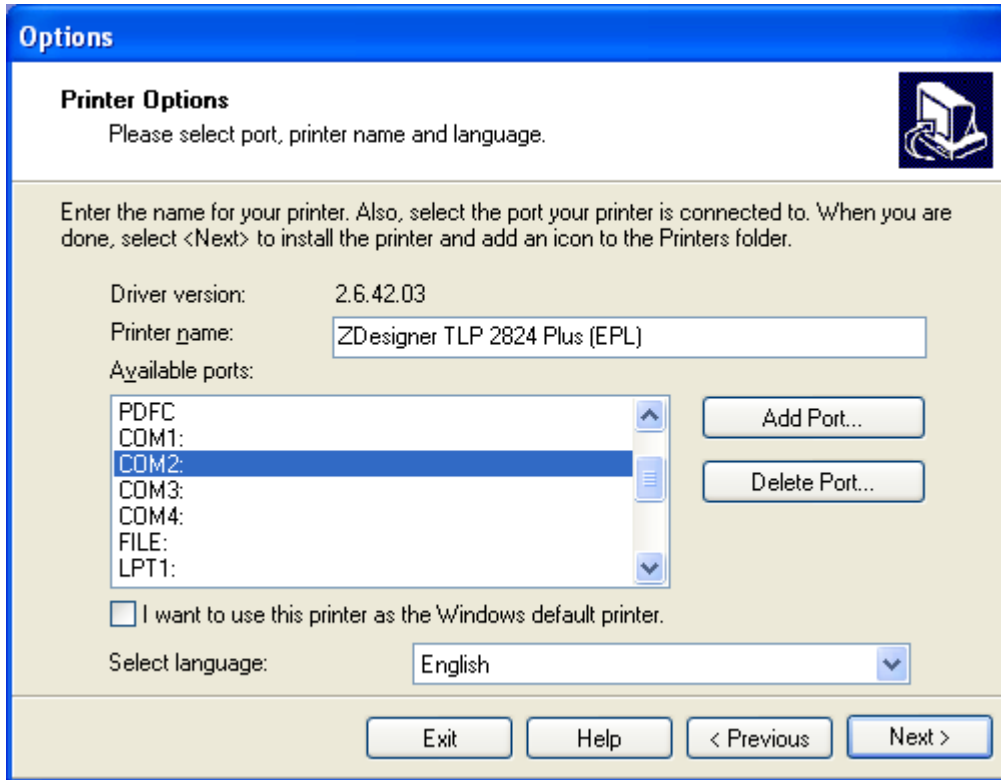
Step 11: Click Install **Printer**



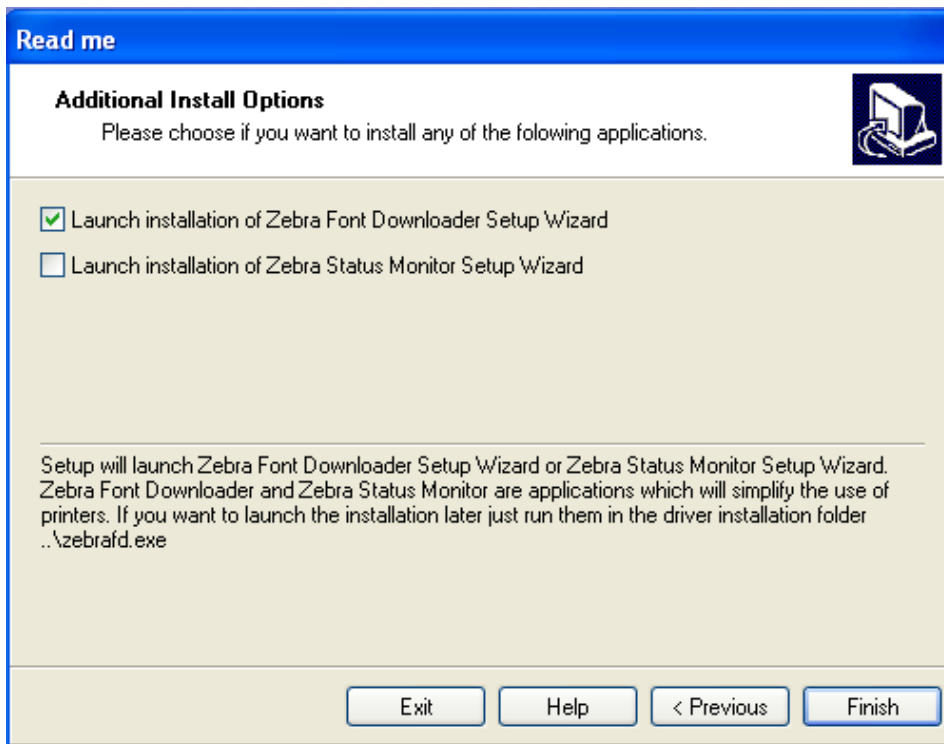
Step 12: For Printers, scroll down and select the **ZDesigner LP 2824 Plus (ZPL)**. Then click **Next >**



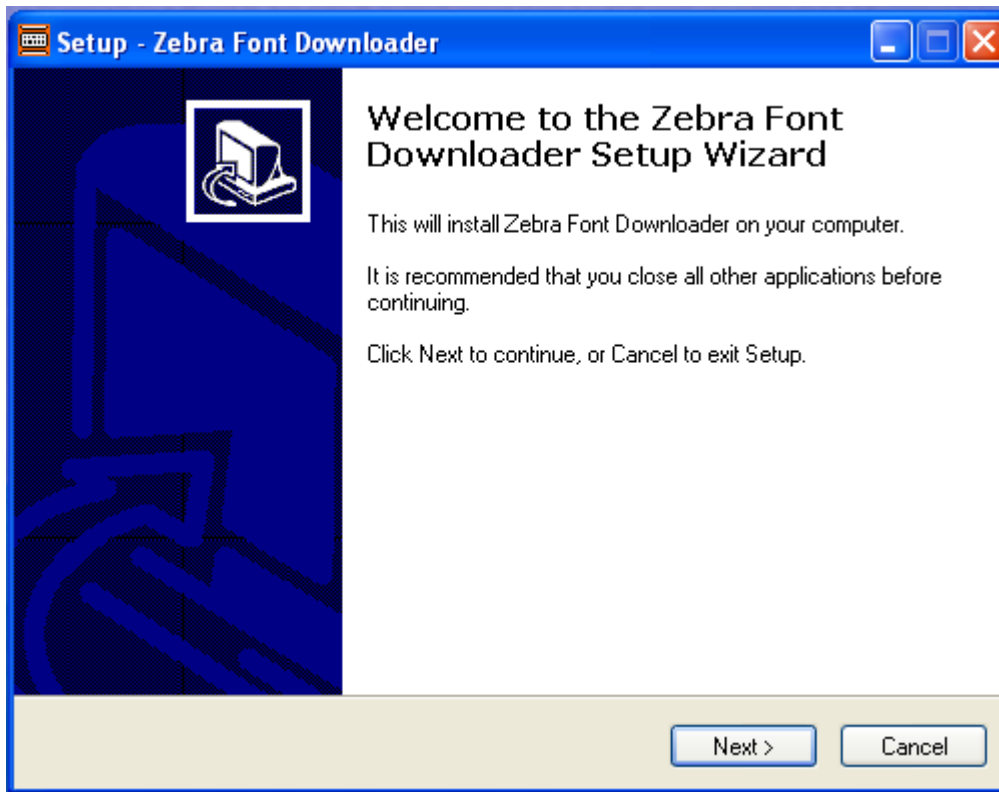
Step 13: Select USB01 or USB02: and press **Next >**



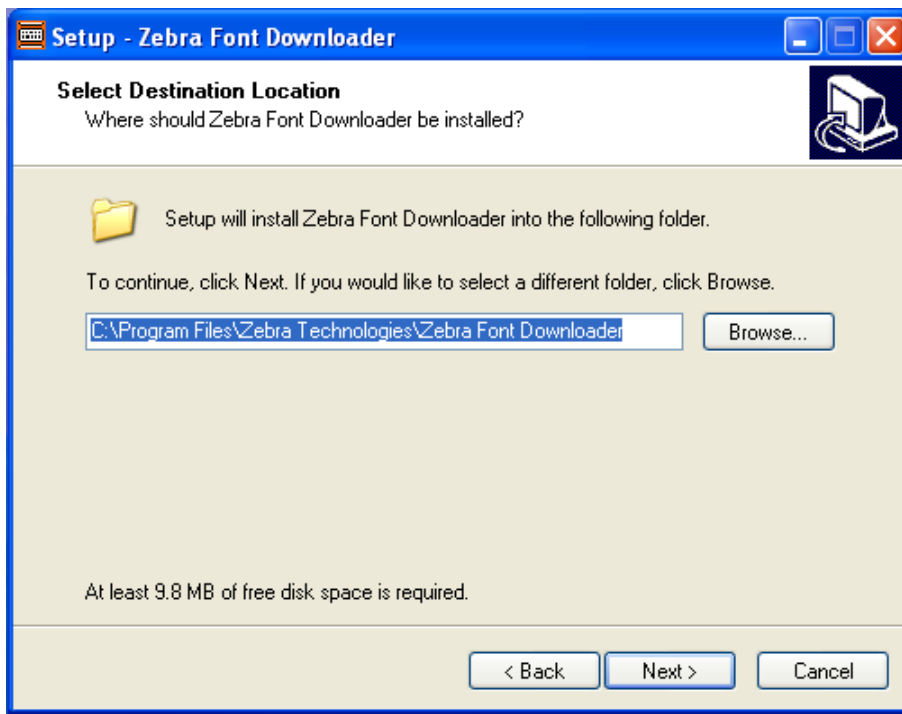
Step 14: Click **Finish**



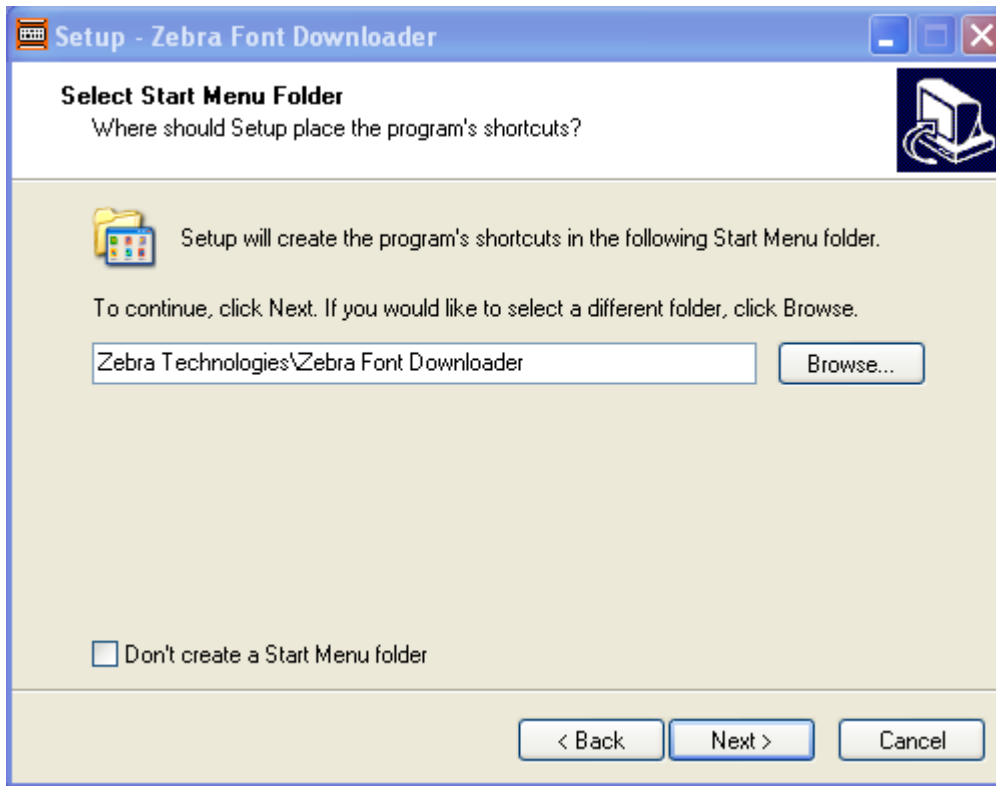
Step 15: Click **Next >**



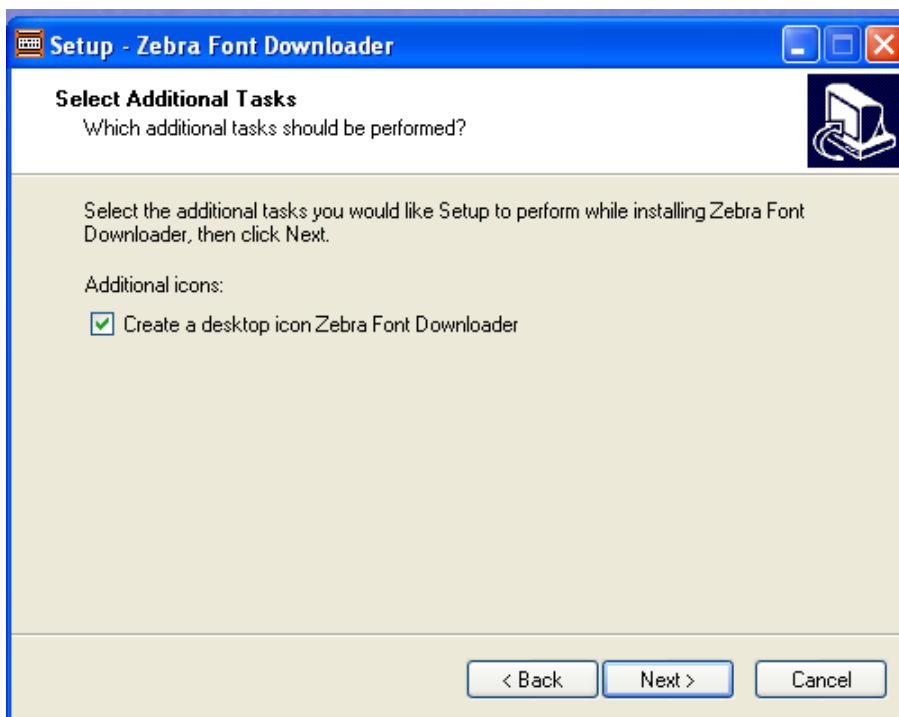
Step 16: Click **Next >**



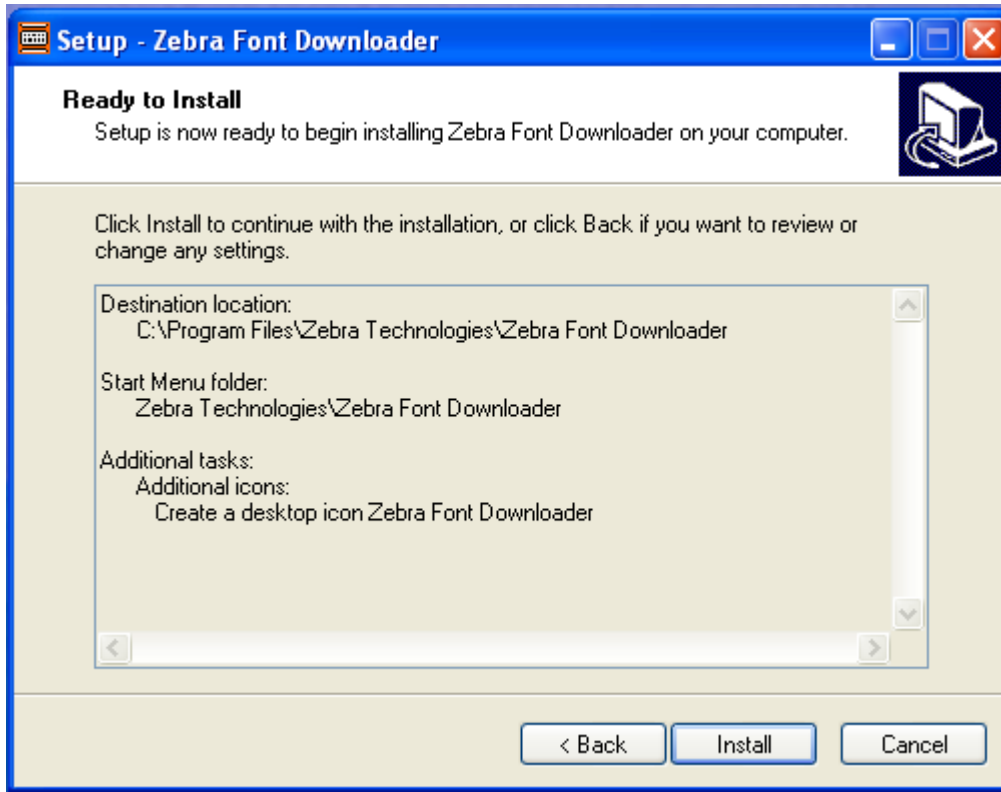
Step 17: Click **Next >**



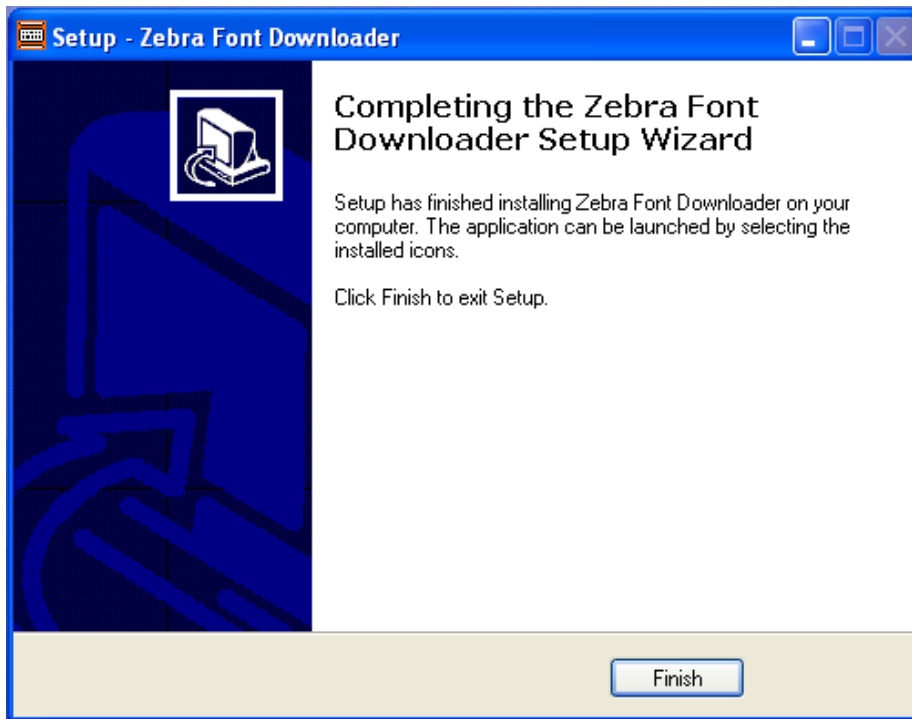
Step 18: Click **Next >**



Step 19: Click **Install**.



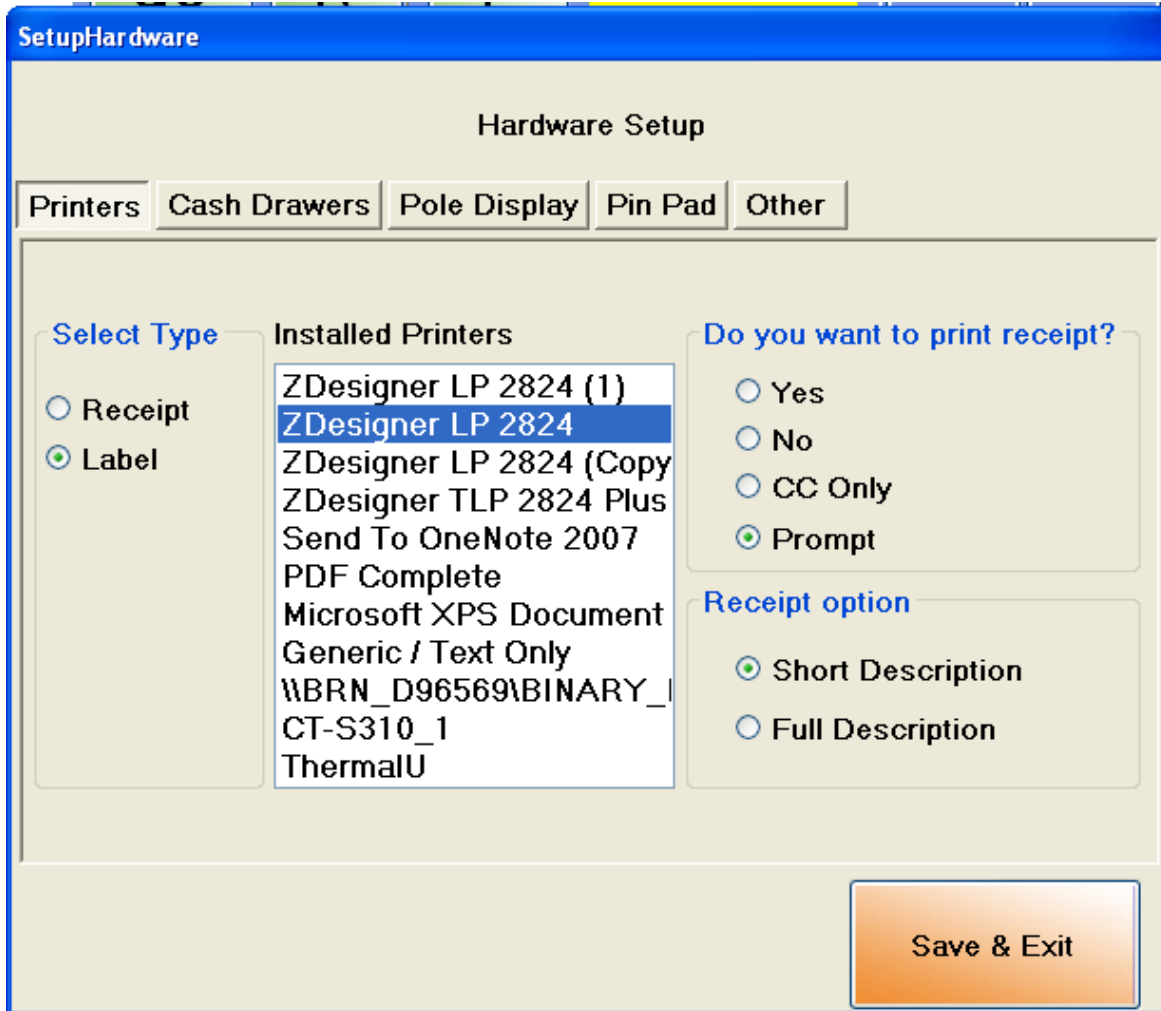
Step 20: Click **Finish**.



Setup Zebra LP 2824 Label Printer with CornerStore

Open up Corner Store then go to **Setup > Hardware Setup**

Under the Printer's tab, Select Type selects Label and make sure **ZDesigner LP 2824** is selected. Then press **Save and Exit**.



How to print labels from Zebra LP 2824 Label Printer

In order to print labels from CornerStore, **Open CornerStore -> Login into CornerStore -> Setup -> Administrator -> Inventory Maintenance -> Print Labels.**

ItemNo	ItemName	Price	ItemStock	Copies
1	Non-Taxable Item	0.00	-1	0
2	Tax 1	0.00	0	0

To print a label you need to select which type of label you are printing. Select the proper option for your labels to print in the Select Label Format: box. You should also check mark **“Select Company Name to Print From Database”**

Select the item you would like to print. You can also scan the item in the Quick Print to place it into the queue.

When you select the item, in the **“Number of Labels”** field, enter the desired number for your labels. If you scanned the item’s you would like then you can manually adjust them after scanning. If you did not scan the item, press **“Add Item to Print List”**

Before you are ready to print, double check that everything you entered is correct, and that you have selected the proper Label type for your Printer and Label configuration.

When you have your list ready to print out, press the **Print** Button. This will print out everything in your queue. After you select print the queue will be cleared.