

INTERNATIONAL POINT OF SALE

Installation instructions for the ELO
Touch screen monitor with Corner Store POS



Corner Store POS supports ELO Touch screen monitors. This document will detail the process of installing the correct drivers for the touch screen and then setting up the touch screen in Corner Store POS.

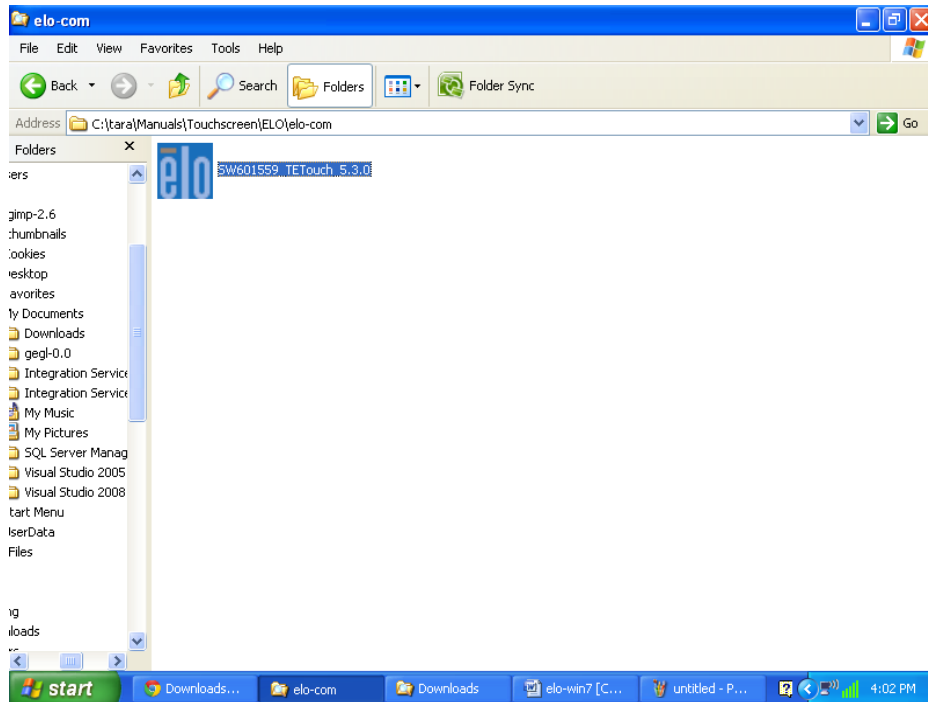
Installing Appropriate Drivers.

NOTE: Make sure that touch screen monitor and the computer is connected.

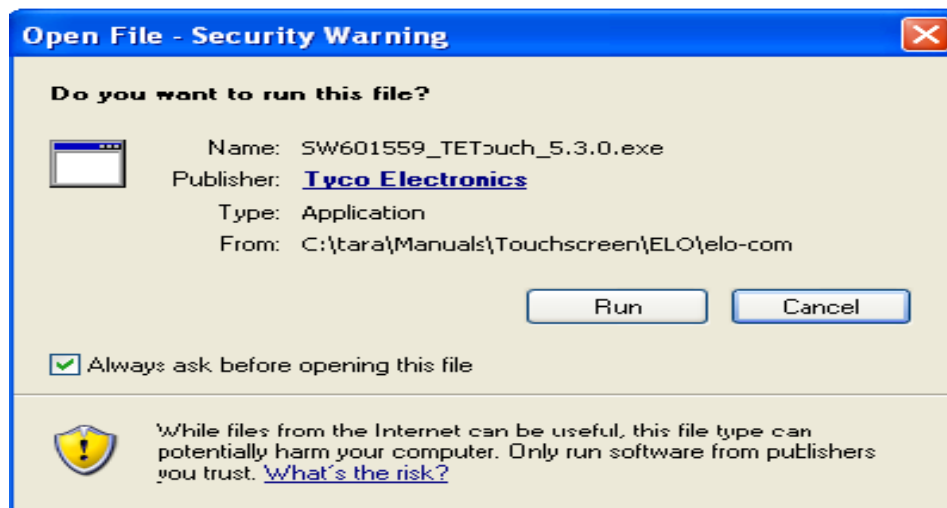
1. The ELO touchscreen monitor driver can be downloaded at

http://cornerstorepos.com/downloads/hardware/eloXPVista7_Touch_5.3.0.exe

2. Click on the executable.



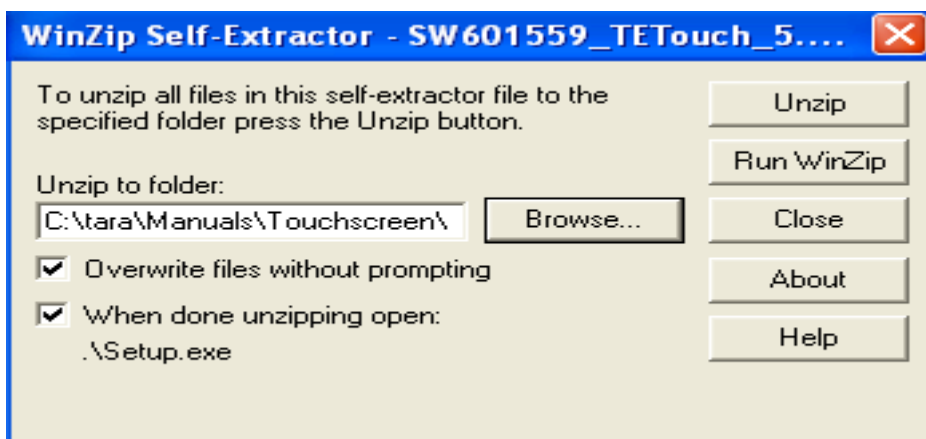
3. Click on **Run**.



4. Click on **OK**.



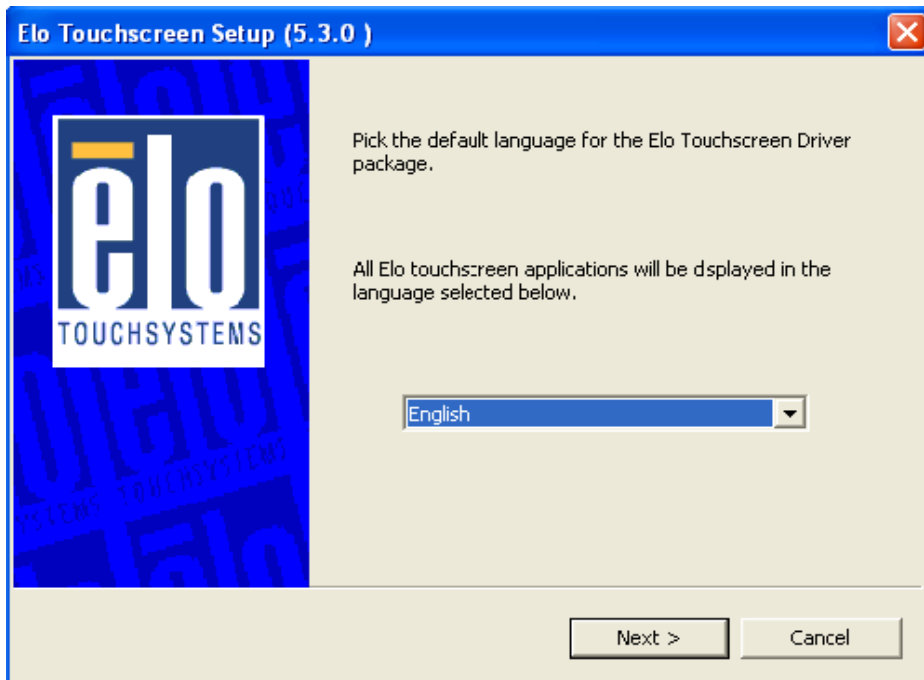
5. Select the location to unzip the files to and then select **unzip**.



6. Click on **OK**.



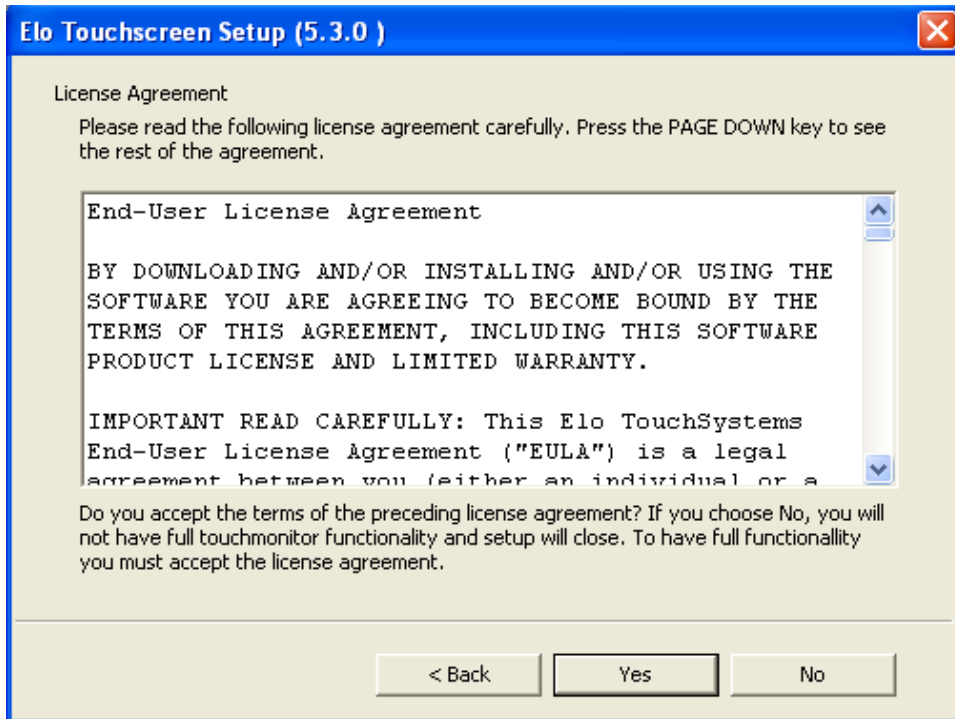
7. Select the **English** Language and click on **Next**.



8. Select '**Install USB Touchscreen drivers**' and click on **Next**.



9. Click on **Yes**.



10. After the installation. Click on **'Finish'**.



11. After successful installation you will be asked for 4 point calibration. On the main screen, you will find red spot. Touch the spot with your finger until it turns into blue. Repeat this for 3 more times.
12. After successful 4 point calibration restart your computer and it is ready to work.