



EPSON OPOS ADK MANUAL

Installer Manual

Installer

Version 2.61 Feb. 2008

Notes

- (1) Reproduction of any part of this documentation by any means is prohibited.
- (2) The contents of this documentation are subject to change without notice.
- (3) Comments and notification of any mistakes in this documentation are gratefully accepted.
- (4) This software cannot be used with other equipment that the specified.
- (5) EPSON will not be responsible for any consequences resulting from the use of any information in this documentation.

Trademarks

Microsoft®, Windows®, Windows Vista™, Visual Basic® and Visual C++® are trademarks or registered trademarks of Microsoft Corporation in the United States and/or other countries.

EPSON® and ESC/POS® are registered trademarks of SEIKO EPSON CORPORATION. Other product and company names used herein are for identification purposes only and may be trademarks or registered trademarks of their respective companies.

Contents

SECTION 1. DEVELOPMENT OUTLINE	1
1.1 FEATURES	1
1.2 OPERATING ENVIRONMENT	1
1.3 NECESSARY SYSTEM COMPONENTS.....	2
SECTION 2. INSTALLATION	5
2.1 FEATURES OF THE INSTALLER	5
2.2 EXPLANATION OF INSTALLER DISKS	6
2.3 INSTALLATION	6
2.3.1 <i>First Installation</i>	6
2.3.2 <i>Overwriting Installation</i>	15
2.4 FILES TO BE INSTALLED	32
2.5 TYPES OF INSTALLATION	33
2.6 CO REGISTRATION	34
2.6.1 <i>The method for updating the CCO</i>	35
2.7 INI FILES	35
2.8 SYSTEM SETUP FILES	35
2.9 INSTALLATION USING THE REGISTRY FILE	35
2.10 ADD-IN FUNCTIONS (SERVICE PACK)	36
2.11 SILENT INSTALLATION	40
2.12 MESSAGES FOR INSTALLATION	44
2.12.1 <i>Messages at the Time of Startup</i>	44
2.12.2 <i>Messages during Installation</i>	45
2.12.3 <i>Message during Driver Installation after EPSON OPOS ADK Installation</i>	46
2.12.4 <i>Messages When the Silent Mode is specified</i>	46
2.12.5 <i>Messages Related to Registry File</i>	47
2.12.6 <i>Messages during Coexisting Installation</i>	47
2.12.7 <i>Add-in Installation Messages</i>	48
2.13 PRECAUTIONS FOR INSTALLATION	49
SECTION 3. UNINSTALLATION	51
3.1 UNINSTALLATION PROCEDURES	51
3.2 TYPES OF UNINSTALLATION.....	52
3.3 SILENT UNINSTALLATION	53
3.4 MESSAGES FOR UNINSTALLATION.....	55

3.5 PRECAUTIONS FOR UNINSTALLATION.....56

Section 1. Development Outline

This section describes development outline for the EPSON OPOS ADK.

1.1 Features

EPSON OPOS ADK offers standardized API functions that interface with peripherals used in POS systems through ActiveX controls that can be run in Visual Basic, operating on the Windows 2000, Windows XP or Windows Vista platforms. Through these standardized API functions, you can develop powerful, open POS systems easily.

1.2 Operating Environment

The EPSON OPOS ADK operates under the following environment.

- Computer Hardware
 - IBM PC/AT or compatible
- Operating Systems
 - Windows 2000
 - Windows XP
 - Windows Vista
 - * For the details of each operation system version, refer to the release note included in the Installation disks.
 - * Internet Explorer: Version 5.0 or higher (Recommend)
 - * There are unsupported devices in Windows Vista environment.
 - For details of contents, please refer to the release notes included in the Installer disks.
- Accessible Serial Ports
 - COM1, COM2, COM3, and COM4 (extended port functions allow use of COM5 though COM10)
- Accessible Parallel Ports
 - LPT1, LPT2, and LPT3 (operation is unverified in LPT3)
- Accessible USB ports
 - USB equipment must be connected to the IBM PC/AT compatible

machines that are equipped with USB connectors or use USB expansion cards (however, the operating system must be the English version of Windows 2000, Windows XP or Windows Vista when USB is used.)

If the USB device cannot be identified when an IBM PC/AT compatible machine equipped with a USB connector is in use (especially for machines put on the market prior to the English version of Windows 98 being available), contact the manufacturer.

- Accessible Network

Ethernet and IEEE802.11b support applies to TCP/IP compliant networks. The setup of a compliant network should be handled by a qualified network administrator.

- Supported Languages

Microsoft Visual Basic	Version 5.0 or above
Microsoft Visual C++	Version 5.0 or above

- Accessible Devices

For details of support devices, please read the release notes included in the Installer disks.

1.3 Necessary System Components

In order to develop an application using OPOS API, the following hardware and software are necessary.

- Computer Body Parts

IBM PC/AT Interchange Machine

- Operating System

Windows 2000

Windows XP

Windows Vista

- Floppy Disk Drive

One or more floppy disc drives

- Hard Disk, Memory

At least 10M bytes hard disk capacity is needed except for recommended blank capacity of using OS (Windows 2000, Windows XP and Windows Vista).

- Disks

Please confirm that your package contains all the following items.

Install Disks:

EPSON OPOS ADK Installation Disk x

These disks include software, manuals and sample programs.

Sample Programs:

EPSON OPOS ADK Install Disk contains practical sample program guides using common API for each device. The method for use is described on the sample program guide. Please copy onto the hard disk as necessary.

Manuals:

On-line manuals are included on EPSON OPOS ADK Disk.

USER'S MANUAL

Information on EPSON OPOS ADK installation and setup.

APPLICATION DEVELOPMENT GUIDE

Programming examples and explanations of factors governing of peripherals. The Application Development Guide is divided into common subjects and device subjects. The common subjects portion contains general information about OPOS and device classes. The device subjects portion contains information for each device. Please refer to common subjects and device subjects for the device being used.

SAMPLE PROGRAM GUIDE

Contains outlines, detailed explanations, and notes on the sample program included on the EPSON OPOS ADK.

Section 2. Installation

Running the EPSON OPOS ADK Installer program can perform all the processing required for installation of the EPSON OPOS ADK. To ensure optimal use of the OPOS, various functions are offered during installation. Please read this manual for details.

When installing or reinstalling, first ensure that all running application programs are closed; both those use the OPOS files as well as any other applications.

After installing of EPSON OPOS ADK, it is necessary to confirm the setup, such as port and device settings. For details, please refer to the "Section 5. SetupPOS Utility" of the "EPSON OPOS ADK MANUAL User's Manual (Installer/ SetupPOS/ TMUSB)" manual.

The EPSON OPOS ADK install program is explained in the following.

2.1 Features of the Installer

This Installer is created using InstallShield 12.

The Installer performs the following operations:

- Specifies the destination directory for installation
- Specifies the destination start menu folder for installation
- Specifies the initial settings for OPOS
- Specifies REG files
- Installation type
 - Full installation ("Common CO" or "EPSON CO")
 - Custom installation
 - Selection of device class units, Selection of CO
 - Selection of the old and new CO (Selection of the CO install)
- Installation of the manual and the Sample Program
- Installation of the driver of EPSON TM USB
- Installation of the driver of parallel
- Uninstallation type
 - Full uninstallation (all)
 - Custom uninstallation
 - Selection of the SO
- Add-in (Service Pack, File update)
- Silent mode installation/uninstallation

2.2 Explanation of Installer Disks

There is only a CD-ROM install disk. The installation from the FD is not supported. Install according to the following procedure.

2.3 Installation

The procedure of install is as follows:

When Windows 2000, Windows XP or Windows Vista is used, installation can be done only by authorized users for the PC to be installed. Please request the authorized users for help.

Installation of the EPSON TM USB Driver (EPSON USB controller for TM printer series) is required when the USB POSPrinter, LineDisplay, MICR, CheckScanner, CashDrawer and ElectronicJournal are to be used.

Without the installation in advance, the devices used with USB port cannot be registered normally. Also, use the Windows 2000, Windows XP or Windows Vista when EPSON OPOS USB devices are to be used.

For details of EPSON TM USB Driver, please refer to the "Section 6. EPSON TM USB Driver" of "EPSON OPOS ADK MANUAL User's Manual (Installer/SetupPOS/ TMUSB)".

2.3.1 First Installation

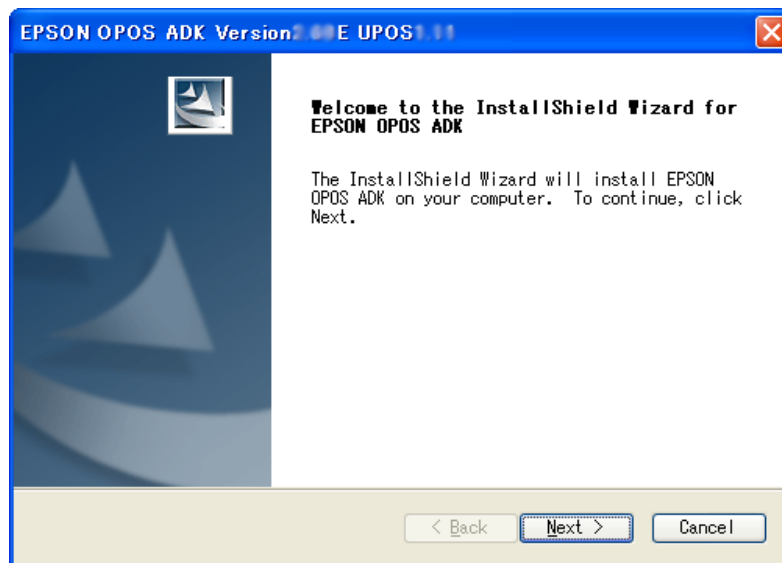
Without the installation of EPSON OPOS ADK in advance, install according to the following procedure.

<Installation Procedure>

- (1) Run the SETUP.EXE program on disk 1.

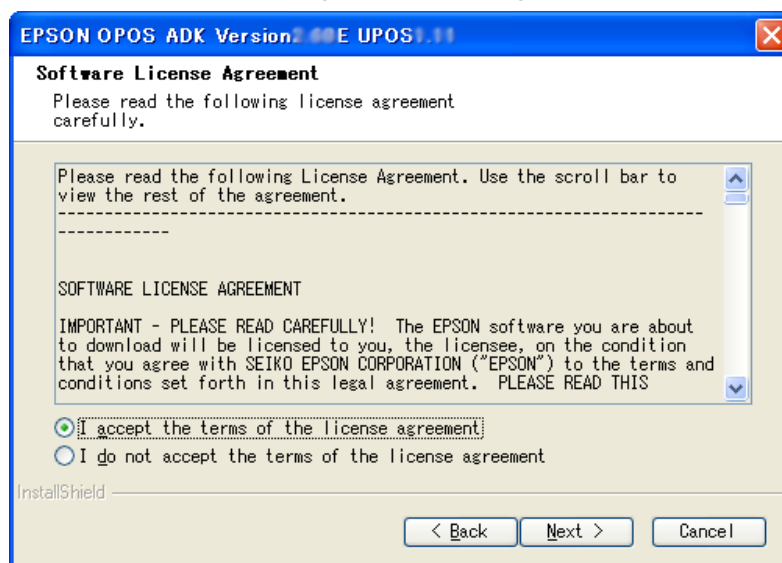
If Setup is executed while other program is running, its operation is not guaranteed. It is suggested to close all programs before executing Setup. Startup of the Setup program may take some time.

- (2) The “Welcome” dialog is displayed.



Read the contents and then select the [Next] button if agreed with the contents.

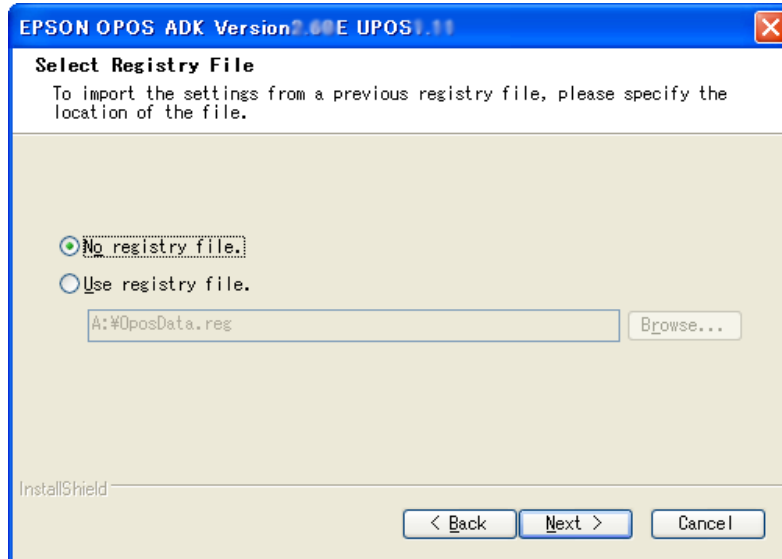
- (3) The “Software License Agreement” dialog box is displayed.



To install the EPSON OPOS ADK, the user must agree to the contents of the displayed agreement. Read the contents. Select “I accept the terms of the license agreement” if agreed with the Software License Agreement. After the selection, the [Next] button becomes effective. Select the [Next] button. If the Software License Agreement is not acceptable, select “I do not accept the terms of the license agreement”. Then, select the [Cancel]

button. Exits installation. Select the [Back] button for returning to the previous dialog box.

- (4) The “Select Registry File” dialog box is displayed.

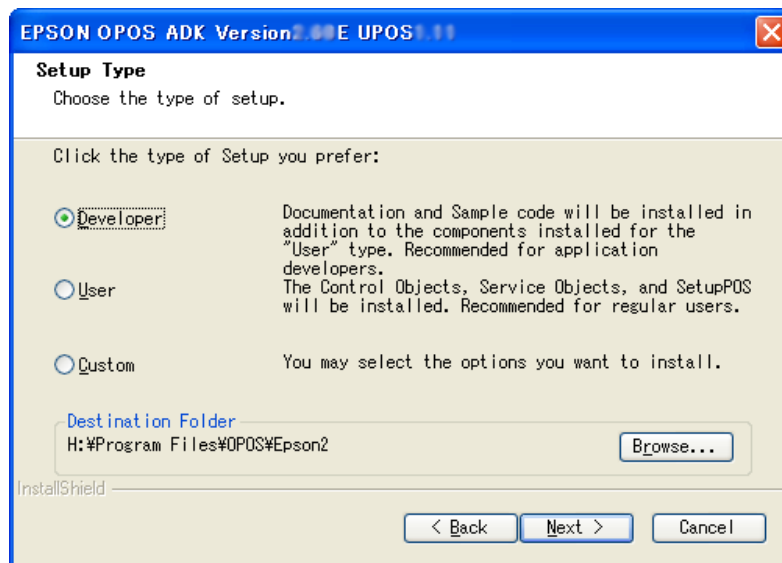


Select “No Registry File” not to use the REG file. Then, select the [Next] button. Select “Use Registry File” to use the REG file. Enter the full path REG file name after the text box is enabled. Then, select the [Next] button. Press the [Browse...] button to specify the folder name that includes the REG file. The REG file is a file for restoring information related to EPSON OPOS ADK. Use the SetupPOS utility to create this file. If an improper Registry File is selected, an error message will be displayed and it will not be possible to move to the next dialog box. Follow the directions of the error message and confirm that the Registry File is correct. When the Registry File is set correctly, subsequent information can be referred from the Registry File.

Select the [Back] button for return to the previous dialog box.

Select the [Cancel] button for quitting.

(5) The “Setup Type” dialog box is displayed.



Select a setup type to be installed. Selectable types are “Developer”, “User” and “Custom”.

The details of type are as follows :

Developer

Components:

Full installation of programs

Manual

SampleProgram

CO:

<Windows 2000/XP> CCO

<Windows Vista> CCO

User

Components:

Full installation of programs

CO:

<Windows 2000/XP> CCO

<Windows Vista> CCO

Custom

Select components to be installed.

- (6) After selecting a type, press the [Next] button.

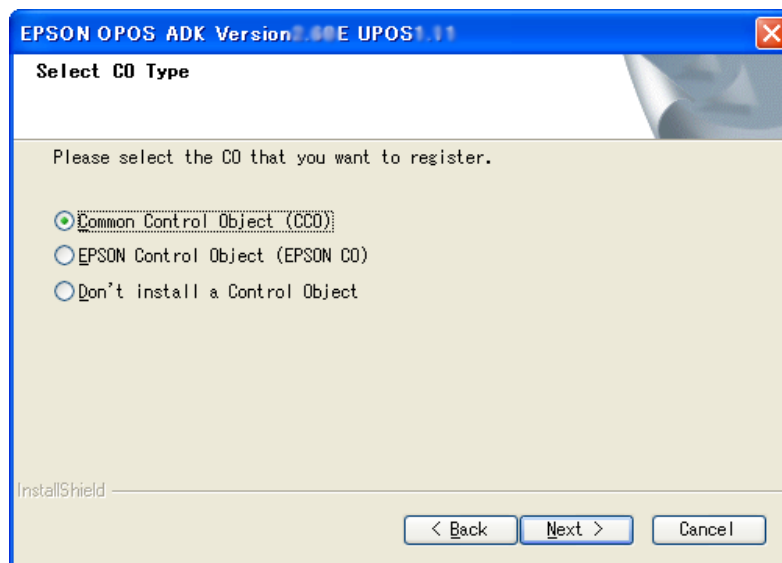
When the "Developer" or the "Users" have been selected, the "Start Copying Files" dialog box is displayed. Confirm the contents and select the [Next] button.

When the "Custom" has been selected, the "Select CO Type" dialog box is displayed.

Select the [Back] button for return to the previous dialog box.

Select the [Cancel] button for quitting.

- (7) The "Select CO Type" dialog box is displayed.



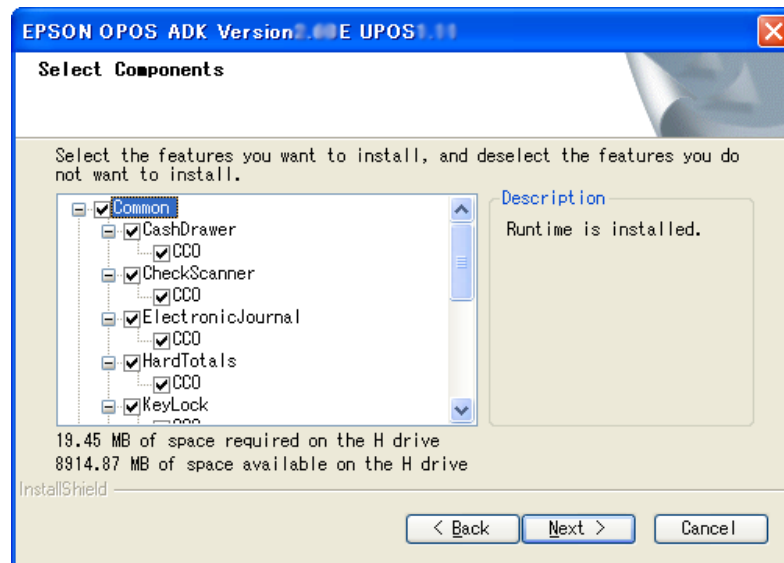
Select the CO that has a priority for registration. The CO registered here will be valid for all devices.

When the type is decided, select the [Next] button.

Select the [Back] button to return to the previous dialog box.

Select the [Cancel] button for quitting.

- (8) The “Select Components” dialog box is displayed.



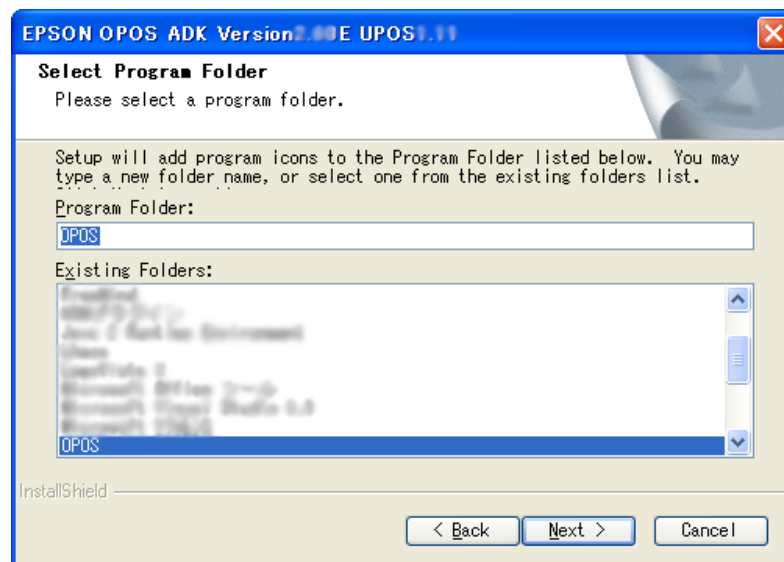
Select the necessary components.

To go to the next dialog box, select the [Next] button.

Select the [Back] button for return to the previous dialog box.

Select the [Cancel] button for quitting.

- (9) The “Select Program Folder” dialog box is displayed.



The previously decided folder name is displayed in “Program Folder”. If the Registry File is specified, this information is referred from the Registry File.

Normally, default values should be used. The folder name can be changed,

or an existing folder can be selected, but if an existing folder is used, please select it only after obtaining an understanding of the folder's attributes. If the OS being used is Windows 2000, Windows XP or Windows Vista, the folder must have COMMON attributes.

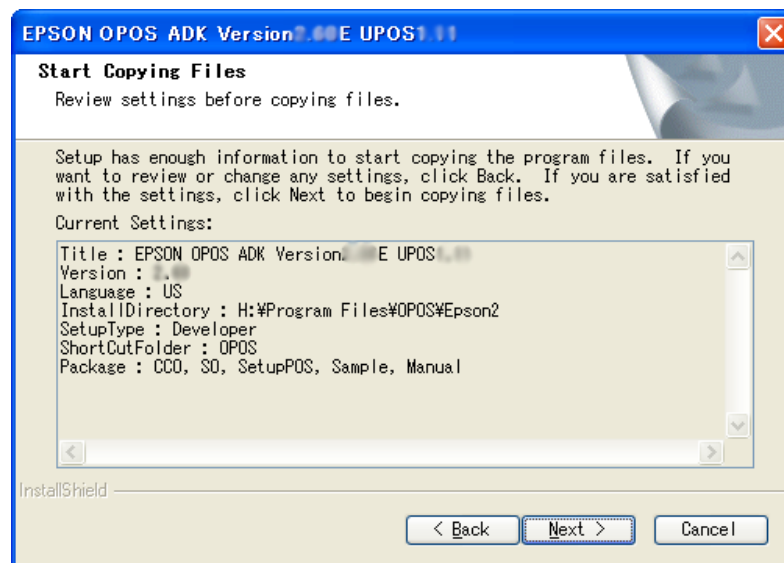
To go to the next dialog box, select the [Next] button.

Select the [Back] button for return to the previous dialog box.

If the [Back] button is selected, the set folder name will be canceled.

Select the [Cancel] button for quitting.

(10) The “Start Copying Files” dialog box is displayed.

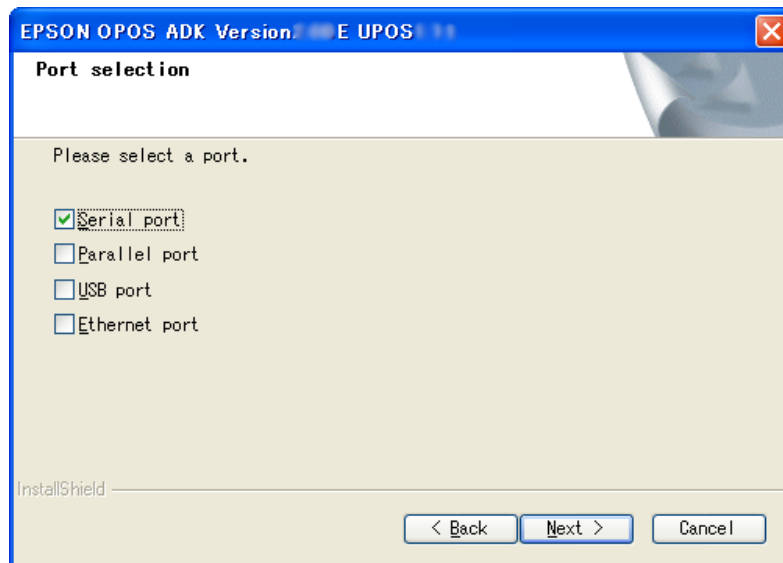


This dialog box shows the information that has already been set. Confirm the contents and select the [Next] button.

Select the [Back] button for return to the previous dialog box.

Select the [Cancel] button for quitting.

(11) The “Port selection” dialog box is displayed.



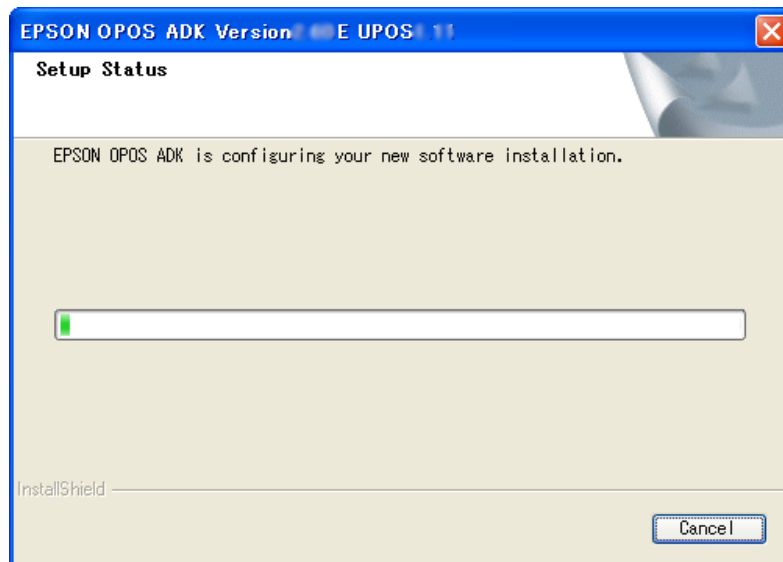
Select the port.

When the Parallel port was selected, the Lilac parallel driver is installed.

When the USB port was selected, the TMUSB driver is installed.

Select the [Cancel] button for quitting.

(12) The “Setup Status” dialog box is displayed.



The progress is shown on the status bar.

The [Cancel] button works at this point, but do not press the [Cancel] button unless there is a particular reason.

Operation after pressing the [Cancel] button is not guaranteed. If pressed,

be sure to perform a reinstallation.

At this point, all the information necessary for the version upgrade shall be updated. It may take a few minutes for all the operations to be completed.

- (13) When all the operations are completed, the "Setup Complete" dialog box is displayed.

Select in the check box whether or not to display the release note on the installed EPSON OPOS ADK. It is strongly recommended to read the notes.

- (14) If system files are renewed because of the installation, rebooting of system may be requested. In this case, please specify whether rebooting right away or later, and execute the rebooting.

If later rebooting is specified, make sure to reboot after the completion of the installation. The operation under the un-rebooted environment is not guaranteed at all.

- (15) Installation is completed. The SetupPOS utility starts up. Confirm the settings in accordance with the setup described in "Section 5. SetupPOS Utility" of "EPSON OPOS ADK MANUAL User's Manual (Installer/ SetupPOS/ TMUSB)".

When system rebooting is executed, SetupPOS utility does not start automatically. Please start SetupPOS utility from start menu.

2.3.2 Overwriting Installation

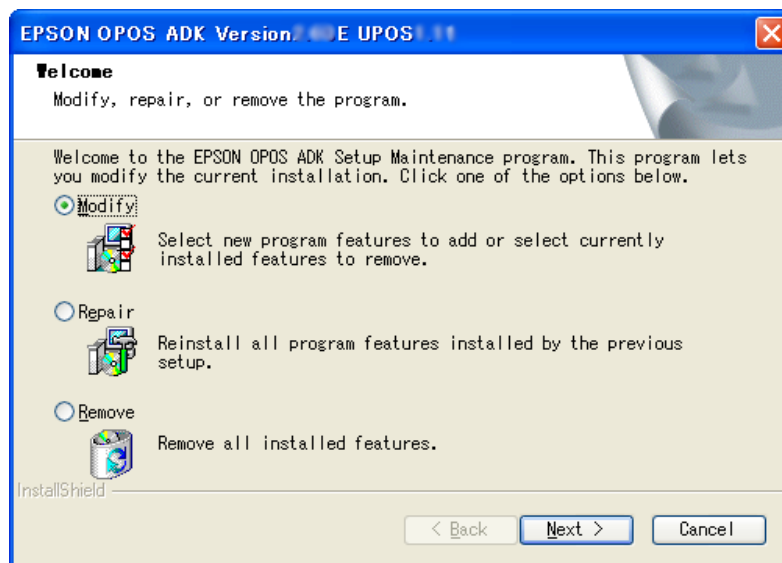
With the installation of EPSON OPOS ADK in advance, install according to the following procedure.

2.3.2.1 Overwriting Version 2.60 by Version 2.60

When performing an overwrite installation, user information, specified installation destination, and specified program folder in the previous installation will remain effective. This information cannot be changed. If a version of EPSON OPOS ADK has been already installed, when you try to install the same version, Add-in Installation starts. In this case, only the installed devices and files are overwritten. This overwriting is not able to overwrite in Windows Vista environment.

<Installation Procedure>

- (1) Run the SETUP.EXE program on disk 1.
Before running SETUP.EXE, close the other programs already running. Otherwise, installation may fail. It takes some time for Setup to start. Wait a while.
- (2) The "Welcome" dialog box is displayed.



Select the arbitrary option and then select the [Next] button.

After this procedure is different depending on the select option.

When the "Modify" has been selected, the "Select CO Type" dialog box is displayed.

When the "Repair" has been selected, the "Setup Status" dialog box is displayed.

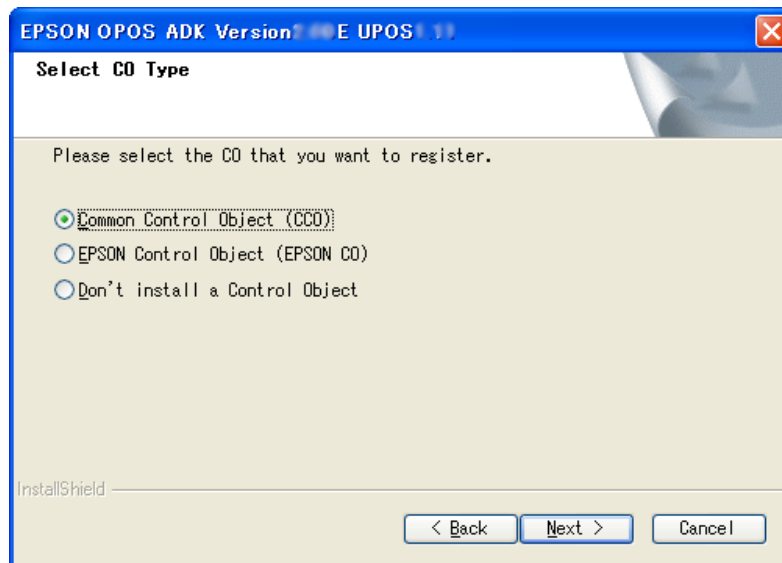
When the "Remove" has been selected, the confirmation message to removing is displayed.

When the "Yes" has been selected, the uninstaller gets started.

When the "No" has been selected, this dialog is displayed again.

Select the [Cancel] button for quitting.

- (3) The “Select CO Type” dialog box is displayed.



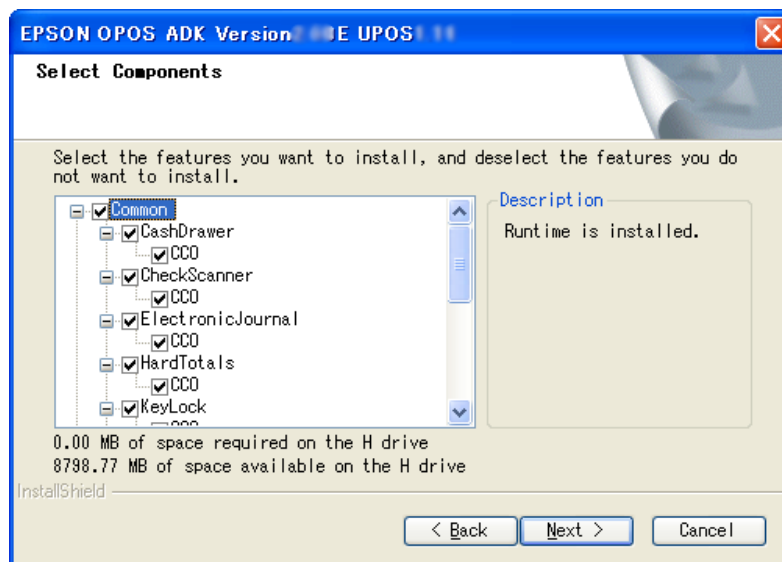
Select the CO that has a priority for registration.

When the type is decided, select the [Next] button.

Select the [Back] button to return to the previous dialog box.

Select the [Cancel] button for quitting.

- (4) The “Select Components” dialog box is displayed.

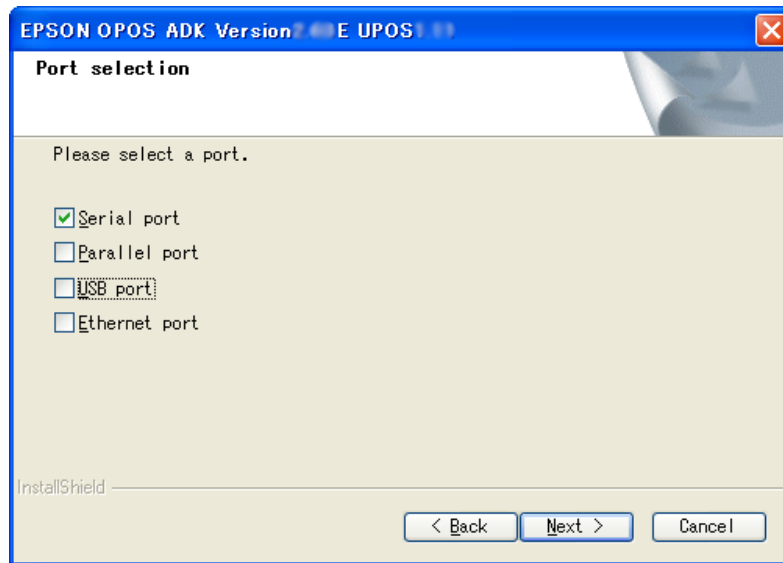


After reviewing the components to add and remove, select the [Next] button.

Select the [Back] button to return to the previous dialog box.

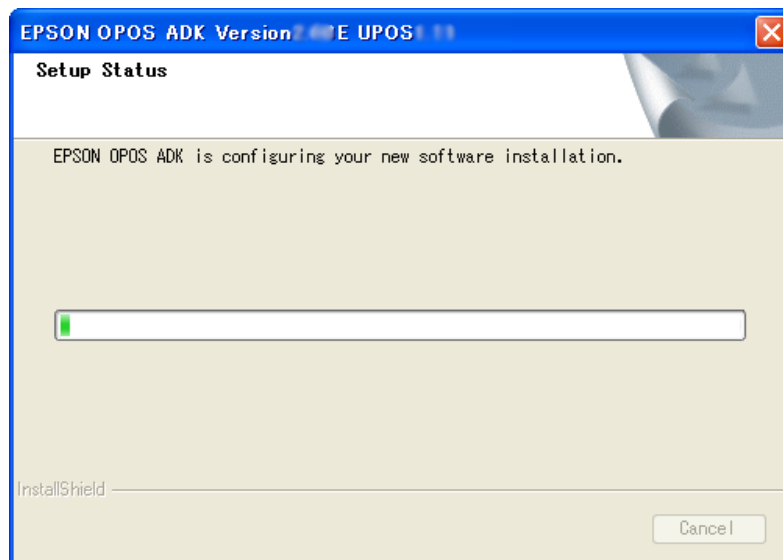
Select the [Cancel] button for quitting.

- (5) The “Port selection” dialog box is displayed.



Select the method of connection used by device, select the [Next] button.
 When the Parallel port is selected, the Lilac parallel driver is installed.
 When the USB port is selected, the TMUSB driver is installed.
 Select the [Back] button to return to the previous dialog box.
 Select the [Cancel] button for quitting.

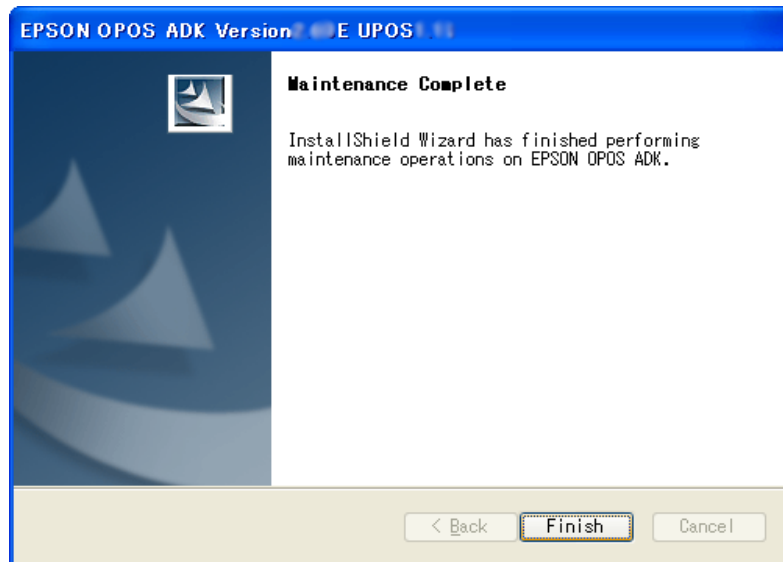
- (6) The “Setup Status” dialog box is displayed.



The progress is shown on the status bar.
 At this point, all the information necessary for the version upgrade shall be

updated. It may take a few minutes for all the operations to be completed.

- (7) When all the operations are completed, the “Setup Complete” dialog box is displayed.



Select the [Finish] button.

- (8) If system files are renewed because of the installation, rebooting of system may be requested. In this case, please specify whether rebooting right away or later, and execute the rebooting.
If later rebooting is specified, make sure to reboot after the completion of the installation. The operation under the un-rebooted environment is not guaranteed at all.
- (9) Installation is completed. The SetupPOS utility starts up. Confirm the settings in accordance with the setup described in “Section 5. SetupPOS Utility” of “EPSON OPOS ADK MANUAL User’s Manual (Installer/ SetupPOS/ TMUSB)”. When system rebooting is executed, SetupPOS utility does not start automatically. Please start SetupPOS utility from start menu.

2.3.2.2 Overwriting Version 2.xx prior to Version 2.60 by Version 2.60

When performing an overwrite installation, user information, specified installation destination, and specified program folder in the previous installation will remain effective. This information cannot be changed.

If Version 2.xx prior to Version 2.60 of EPSON OPOS ADK already has been installed, when you try to install the new version, Add-in Installation starts. In this case, only the installed devices and files are overwritten.

This overwriting is not able to overwrite in Windows Vista environment.

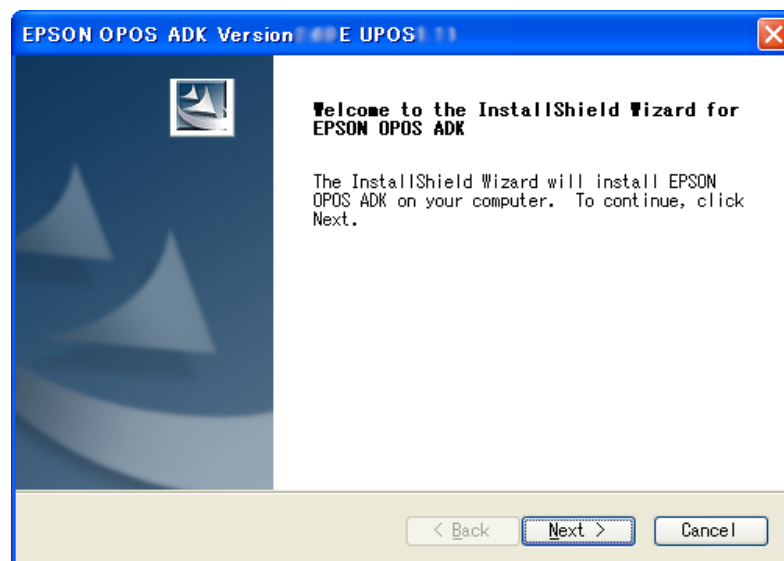
<Installation Procedure>

- (1) Run the SETUP.EXE program on disk 1.

Before running SETUP.EXE, close the other programs already running. Otherwise, installation may fail. It takes some time for Setup to start. Wait a while.

Compares the module already installed with the module contained in the package. If there is a possibility that problem occurs, the "Question" dialog box is displayed and a summary is notified.

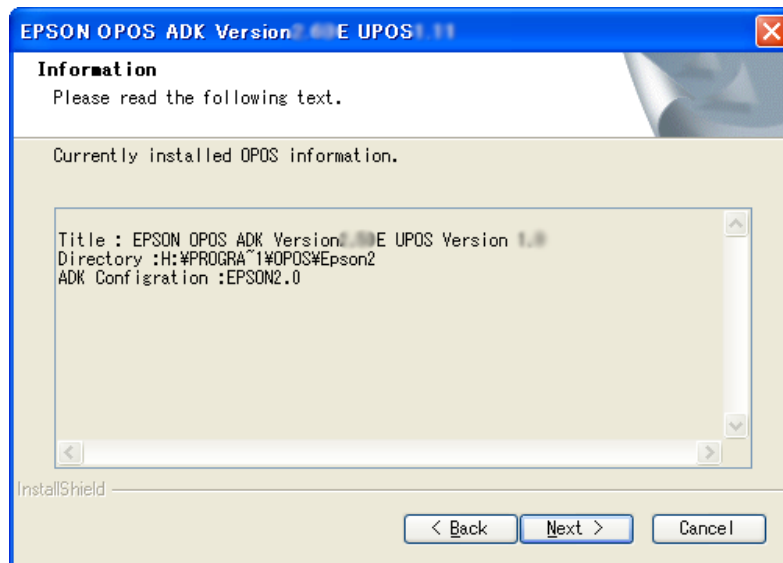
- (2) The "Welcome" dialog box is displayed.



Read the contents and then select the [Next] button if agreed with the contents.

Select the [Cancel] button for quitting.

- (3) The “Information” dialog box is displayed.

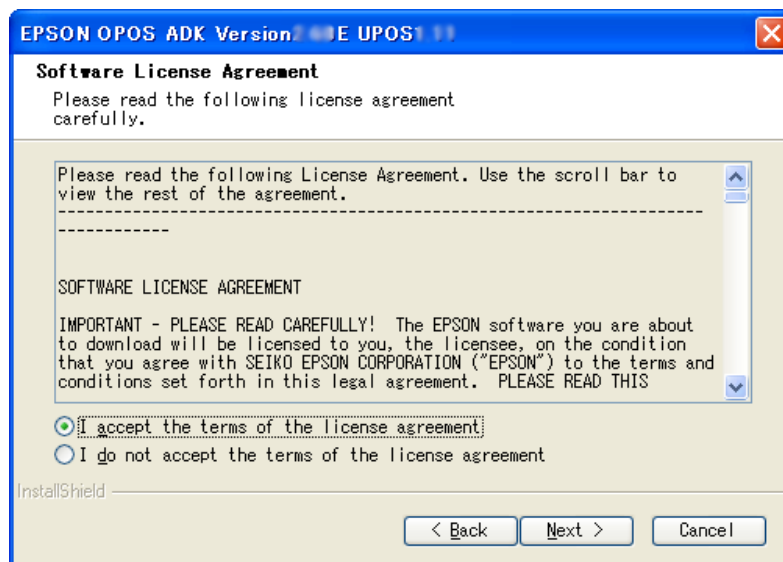


This dialog box displays information on the settings of the already installed EPSON OPOS ADK. Confirm the contents of the list and select the [Next] button if the contents are satisfactory.

Select the [Back] button to return to the previous dialog box.

Select the [Cancel] button for quitting.

- (4) The “Software License Agreement” dialog box is displayed.

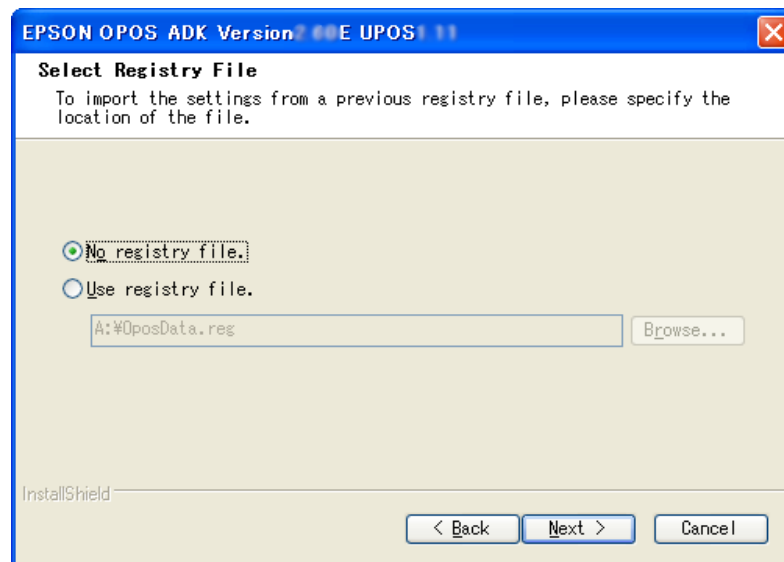


To install the EPSON OPOS ADK, the user must agree to the contents of the displayed agreement. Read the contents. In addition, select “I accept the terms in the License” if agreed with the Software License Agreement.

After the selection, the [Next] button becomes effective. Select the [Next] button. If the Software License Agreement is not acceptable, select "I do not accept the terms in the License Agreement". Then, select the [Cancel] button. Exits installation.

Select the [Back] button for returning to the previous dialog box.

- (5) The "Select Registry File" dialog box is displayed.

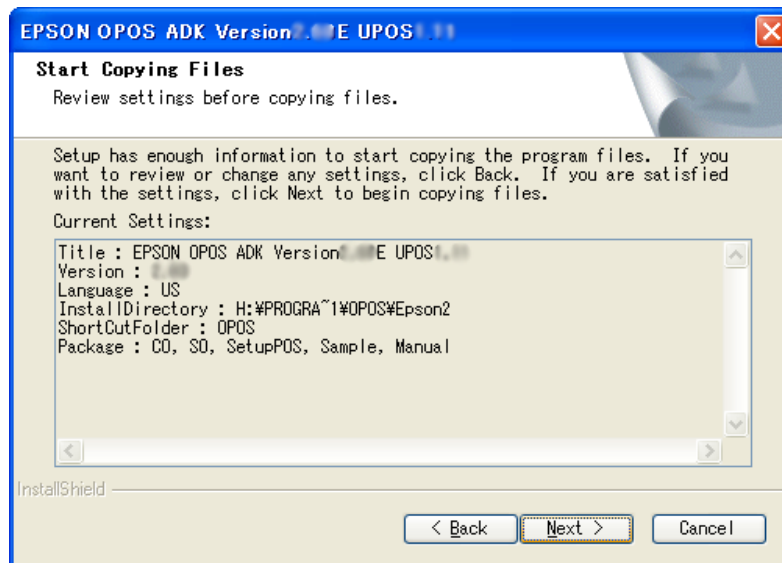


Select "No Registry File" not to use the REG file. Then, select the [Next] button. Select "Use Registry File" to use the REG file. Enter the full path REG file name after the text box is enabled. Then, select the [Next] button. Press the [Browse] button to specify the folder name that includes the REG file. The REG file is a file for restoring information related to EPSON OPOS ADK. Use the SetupPOS utility to create this file. If an improper Registry File is selected, an error message will be displayed and it will not be possible to move to the next dialog box. Follow the directions of the error message and confirm that the Registry File is correct. When the Registry File is set correctly, subsequent information can be referred from the Registry File.

Select the [Back] button to return to the previous dialog box.

Select the [Cancel] button for quitting.

- (6) The “Start Copying Files” dialog box is displayed.

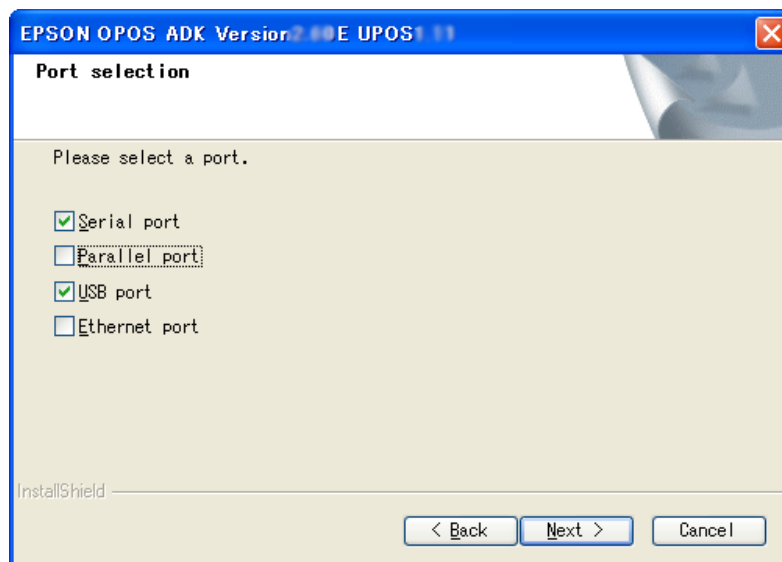


This dialog box shows the information that has already been set. Confirm the contents and select the [Next] button.

Select the [Back] button to return to the previous dialog box.

Select the [Cancel] button for quitting.

- (7) The “Port selection” dialog box is displayed.



Select the method of connection used by device, select the [Next] button.

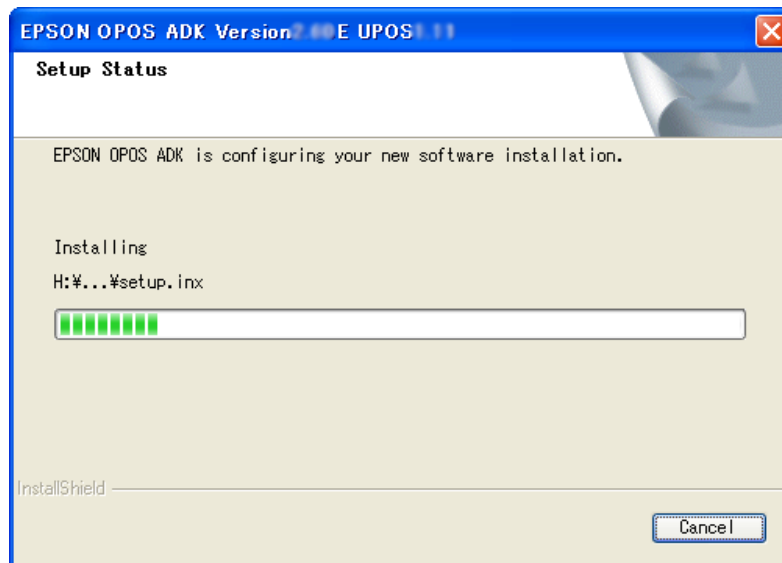
When the Parallel port is selected, the Lilac parallel driver is installed.

When the USB port is selected, the TMUSB driver is installed.

Select the [Back] button to return to the previous dialog box.

Select the [Cancel] button for quitting.

- (8) The “Setup Status” dialog box is displayed.



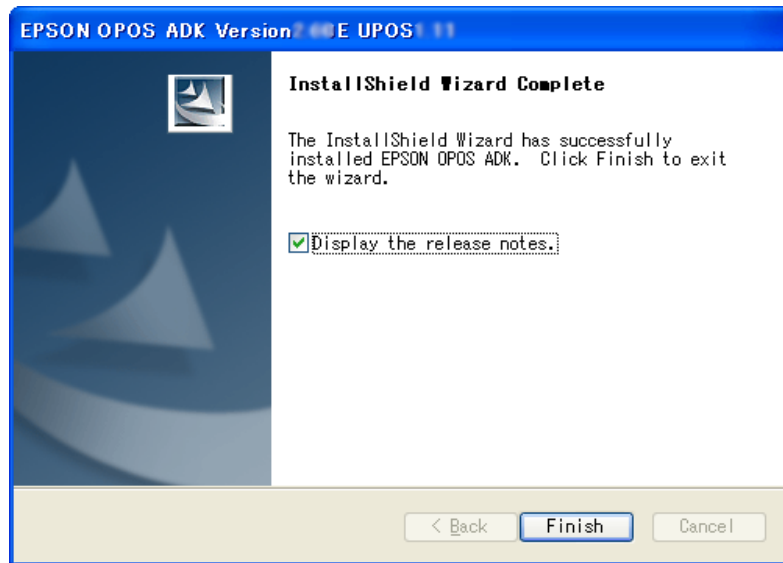
The progress is shown on the status bar.

The [Cancel] button works at this point, but do not press the [Cancel] button unless there is a particular reason.

Operation after pressing the [Cancel] button is not guaranteed. If pressed, be sure to perform a reinstallation.

At this point, all the information necessary for the version upgrade shall be updated. It may take a few minutes for all the operations to be completed.

- (9) When all the operations are completed, the “InstallShield Wizard Complete” dialog box is displayed.



Select in the check box whether or not to display the release note on the installed EPSON OPOS ADK. It is strongly recommended to read the notes.

- (10) If system files are renewed because of the installation, rebooting of system may be requested. In this case, please specify whether rebooting right away or later, and execute the rebooting.

If later rebooting is specified, make sure to reboot after the completion of the installation. The operation under the un-rebooted environment is not guaranteed at all.

- (11) Installation is completed. The SetupPOS utility starts up. Confirm the settings in accordance with the setup described in “Section 5. SetupPOS Utility” of “EPSON OPOS ADK MANUAL User’s Manual (Installer/ SetupPOS/ TMUSB)”.

When system rebooting is executed, SetupPOS utility does not start automatically. Please start SetupPOS utility from start menu.

2.3.2.3 Overwriting Version 1.xx by Version 2.60

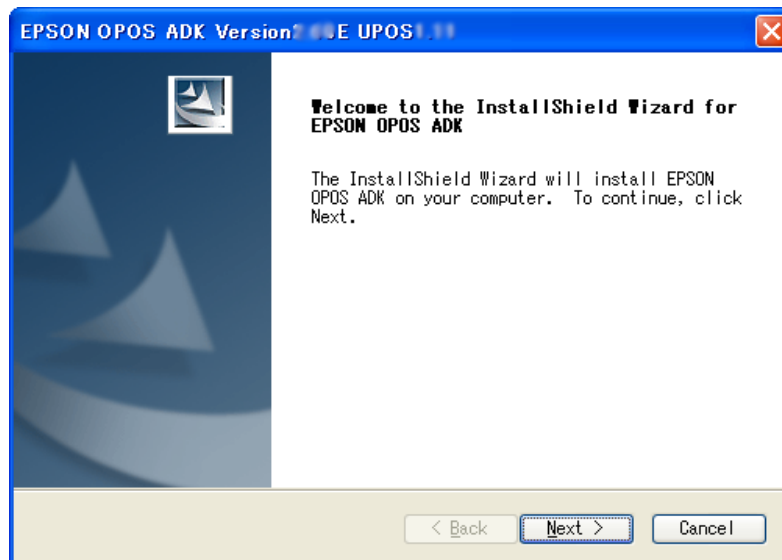
EPSON OPOS ADK Version 1.xx can be overwritten only by Version 2.xx. The Version 2.xx overwrites all the components of the Version 1.xx.

When performing an overwrite installation, user information, specified installation destination, and specified program folder in the previous installation will remain effective. This information cannot be changed.

This overwriting is not able to overwrite in Windows Vista environment.

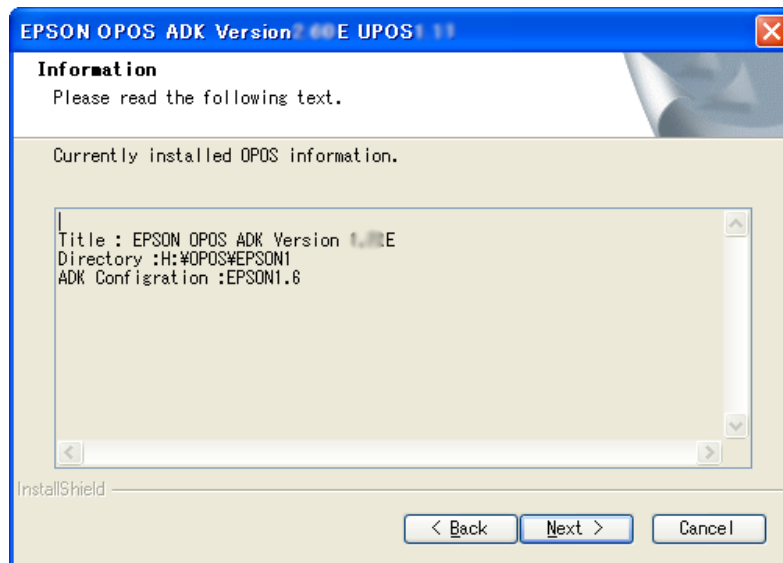
<Installation Procedure>

- (1) Run the SETUP.EXE program on disk 1.
Before running SETUP.EXE, close the other programs already running.
Otherwise, installation may fail. It takes some time for Setup to start. Wait a while.
- (2) The “Welcome” dialog box is displayed.



Read the contents and then select the [Next] button if agreed with the contents. Select the [Cancel] button for quitting.

- (3) The “Information” dialog box is displayed.



This dialog box displays information on the settings of the already installed EPSON OPOS ADK. Confirm the contents of the list and select the [Next] button if the contents are satisfactory.

Select the [Back] button to return to the previous dialog box.

Select the [Cancel] button for quitting.

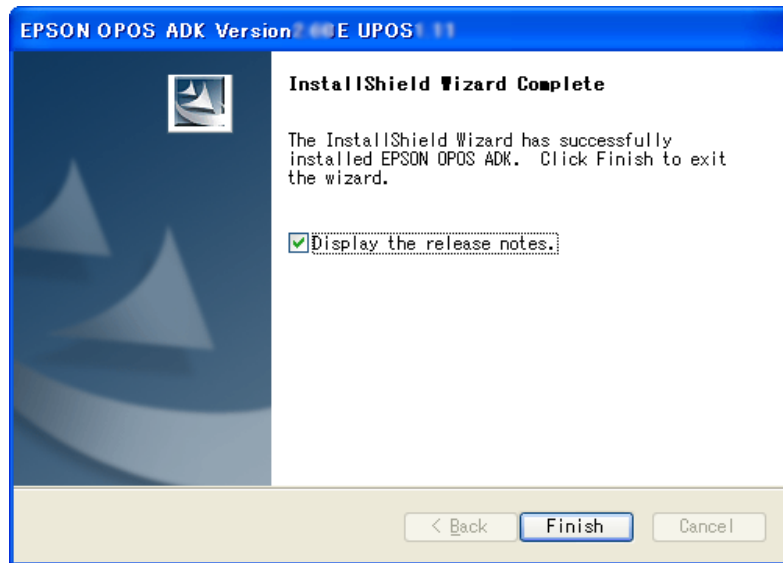
From (4) to (11) steps are the same as those described in “3.3.1 First Installation”. Please refer to “2.3.1 First Installation” of this manual.

- (12) The “Question” dialog box is displayed.

Select the [Yes] button for updating to the information of the OPOS ADK version that coexisted.

Select the [No] button for not updating to the information of the OPOS ADK version that coexisted

- (13) When all the operations are completed, the “InstallShield Wizard Complete” dialog box is displayed.



Select in the check box whether or not to display the release note on the installed EPSON OPOS ADK. It is strongly recommended to read the notes.

- (14) If system files are renewed because of the installation, rebooting of system may be requested. In this case, please specify whether rebooting right away or later, and execute the rebooting.

If later rebooting is specified, make sure to reboot after the completion of the installation. The operation under the un-rebooted environment is not guaranteed at all.

- (15) Installation is completed. The SetupPOS utility starts up. Confirm the settings in accordance with the setup described in “Section 5. SetupPOS Utility” of “EPSON OPOS ADK MANUAL User’s Manual (Installer/ SetupPOS/ TMUSB)”.

When system rebooting is executed, SetupPOS utility does not start automatically. Please start SetupPOS utility from start menu.

2.3.2.4 Version1.xx and Version2.60 Coexisting Installation

Coexistence implies that the devices of Version 1.xx and the devices of Version 2.60 operate simultaneously. The above versions are able to coexist, but it is recommended to use Version 2.60 alone since there are some restrictions as follows:

This overwriting is not able to overwrite in Windows Vista environment.

<Restrictions on coexistence>

Hydra settings devices on the same port cannot coexist and be shared between versions.

(Example) Version 1.xx : Printer, Display, Drawer are hydra settings.
Version 2.60 : When printer alone is intended installed.

In this case, the whole settings cannot be succeeded as they are unless Printer, Display and Drawer are also installed in Version 2.60.

Only the printer information is succeeded, and the device settings for Display and Drawer are deleted.

It is not possible for devices with shared keyboard interface to coexist and be shared by different versions.

(Example) Version 1.xx : MSR, Keylock.
Version 2.60 : When Keylock alone is intended installed.

In this case, the whole settings cannot be succeeded as they are unless both Keylock and MSR are also installed in Version 2.60. Only the Keylock information is succeeded, and the device settings for MSR are deleted from both versions.

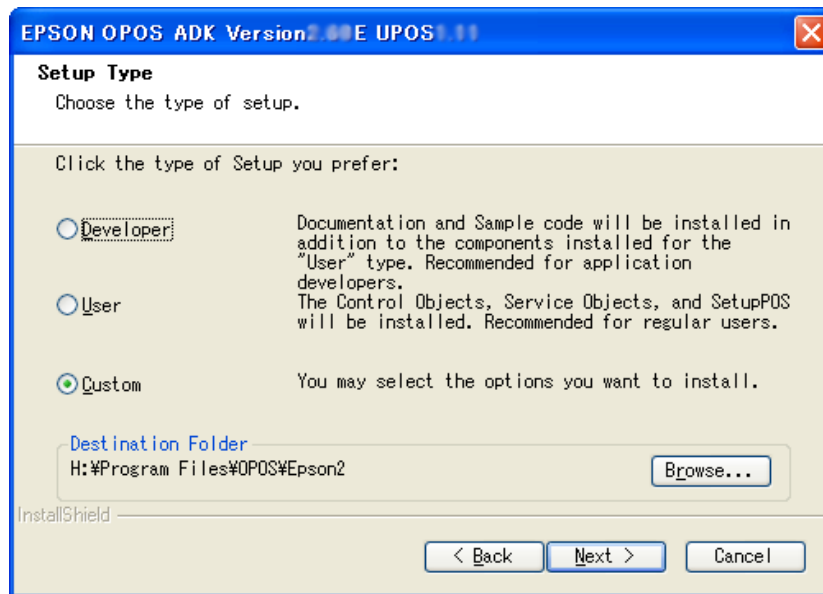
The restrictions apply to the following devices.

COM hydra : Printer, Display, Drawer, MICR, CheckScanner
Keyboard hydra : MSR, Keylock

<Installation Procedure>

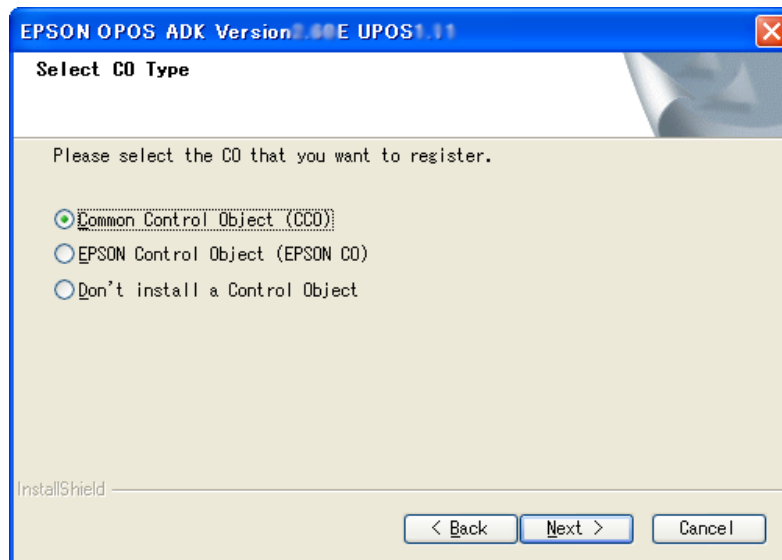
From (1) to (4) steps are the same as those described in “3.3.1 First Installation”. Please refer to "2.3.1 First Installation" of this manual.

- (5) The “Setup Type” dialog box is displayed.



Select the [Custom] button, and then select the [Next] button.
 Select the [Back] button to return to the previous dialog box.
 Select the [Cancel] button for quitting.

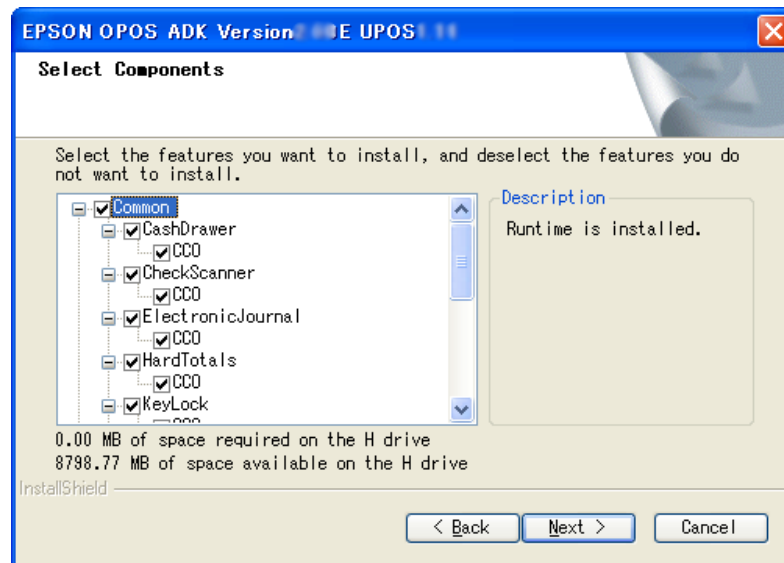
- (6) The “Select CO Type” dialog box is displayed.



Select the CO that has a priority for registration. The CO registered here will be valid for all devices.
 When the type is decided, select the [Next] button.
 Select the [Back] button to return to the previous dialog box.

Select the [Cancel] button for quitting.

- (7) The “Select Components” dialog box is displayed.



Select the necessary components.

Select the [Next] button to go to the next dialog box.

Select the [Back] button to return to the previous dialog box.

Select the [Cancel] button for quitting.

- (8) The “Start Copying Files” dialog box is displayed.

This dialog box shows the information that has already been set. Confirm the contents and select the [Next] button.

Select the [Back] button to return to the previous dialog box.

Select the [Cancel] button for quitting.

- (9) Copying of files, registration of DLL and OCX, and setting the registry begins.

During the copying, the confirmation message “Inherit the previous version information?” is displayed. When overwriting, be sure to select yes. This ensures that the device information set in Version 1.xx can be used by Version 2.xx. It may take a few minutes for all the operations to be completed. When the [No] button is selected, information on Version 1.xx remains as it is.

At this point, all the information necessary for the version upgrade shall be updated.

It may take a few minutes for all the operations to be completed.

The [Cancel] button works at this point, but do not press the [Cancel] button unless there is a particular reason. Operation after pressing the [Cancel] button is not guaranteed. If pressed, be sure to perform a reinstallation.

- (10) When all the operations are completed, the “Setup Complete” dialog box is displayed.

Select in the check box whether or not to display the release note on the installed EPSON OPOS ADK. It is strongly recommended to read the notes.

When the installation of the parallel driver is successfully done, system files are renewed and a message to query rebooting method is indicated. Please specify whether rebooting right away or later, and execute the rebooting. If later rebooting is specified, make sure to reboot after the completion of the installation. The operation under the un-rebooted environment is not guaranteed at all.

- (11) Installation is completed. The SetupPOS utility starts up. Confirm the settings in accordance with the setup described in “Section 5. SetupPOS Utility” of “EPSON OPOS ADK MANUAL User’s Manual (Installer/ SetupPOS/ TMUSB)”.

When system rebooting is executed, SetupPOS utility does not start automatically. Please start SetupPOS utility from start menu.

2.3.2.5 Others

When both Version 1.xx and Version 2.xx prior to Version 2.60 are already installed and in addition, Version 2.xx is upgraded to Version 2.xx, the method described in Section 3. “2.3.2.2. Overwriting Version 2.xx prior to Version 2.60 by Version 2.60” of this manual applies.

2.4 Files to be installed

The following files are installed when the installation is normally completed.

- Program files:

These files are installed in the directory where the EPSON OPOS ADK is installed. Software files such as CO, SO, utilities, and device information files are included in this directory. To install these files, select “Program Files” in the

“Select Install Module” dialog box at installation.

- Include files:

These files are installed in the Include folder under the folder where the EPSON OPOS ADK is installed. Files necessary for the OPOS such as C++ header file, VB header file, and TLB file for CO are included in this directory. To install these files, select “Program Files” in the “Select Install Module” dialog box at installation.

- Sample:

These files are installed in the Sample folder under the folder where the EPSON OPOS ADK is installed. Sample programs for VC++ and VB are included in this directory. To install these files, select “Sample” in the “Select Install Module” dialog box at installation.

- Manuals:

These files are installed in the Manual folder under the folder where the EPSON OPOS ADK is installed. To install these files, select “Manuals” in the “Select Install Module” dialog box at installation.

- EPSON TM USB Driver Files:

These files are installed in the Tmusb folder under the folder where the EPSON OPOS ADK is installed. The Installer of EPSON TM USB Driver and related files are included in this directory. Folders are made for each OS and files are copied. These files are inevitably installed.

- Parallel Driver Files:

These files are installed in the Lilac folder under the folder where the EPSON OPOS ADK is installed. The installer of parallel driver and related files are included in this directory. Folders are made for each OS and files are copied. These files are inevitably installed.

2.5 Types of Installation

There are two types of installation: full and custom.

Select the type in the “Install Type” dialog box.

- Full installation

Full installation installs all the supported devices. For supported devices, read the release note included in the Installer disks.

- Custom installation

Custom installation installs selected devices from the supported devices. Selectable units are device classes. If selecting custom installation in the

“Install Type” dialog box, the “Select Components” dialog box appears. The displayed list shows the devices that can be installed. Check only the devices that you want to install.

2.6 CO Registration

Both CCO and EPSON CO can be installed and registered in EPSON OPOS ADK. In addition, you can also choose to register neither of the two, and thus it becomes possible to use the COs of a previous version or from another company.

When using multiple COs in this way, please note the following precautions.

Please note the following points when the multiple CO are used.

(When application is created with VB)

(1) Pasting control on form by adding VB component

In this case, character strings applicable to the CO type library is displayed in the “Component dialog” box.

As this character strings is an individual string, it is possible to select the CO to be actually used. If multiple COs are registered, select the CO that you want to use from the list of components.

(2) Creating CO by specifying Program ID using Create Object

In this case, specifies the program ID of the CO.

The program ID is character strings determined by the OPOS specifications.

Ex: the CO of a POSPrinter is “OPOS.POSPrinter”.

If multiple COs of the same device class have been registered, the latest one is created.

If this method is used, it is also necessary to pay attention to the order of the registrations of COs.

(3) Creating CO using WithEvents

In this case, it is not possible to create “as Object”; it is necessary to create it “as Class Name”.

The CO Class Name may be the same or different.

Before declaring a variable using WithEvents, components are selected using method (1), and the components selected in the “Component” dialog box can be used.

2.6.1 The method for updating the CCO

The CCO that is bundled with EPSON OPOS ADK Version 2.60 is the latest version at release time. Please use the following procedure to update to a later version.

<Installation Procedure>

- (1) Download the CCO installer from the following web site.
<http://www.monroecs.com/>
- (2) Installs by the downloaded CCO installer.

<Warnings>

- If you install EPSON OPOS after updating the CCO, the CCO will become the older version.
Follow the above steps, then update the CCO again.
- If you uninstall EPSON OPOS, the updated CCO will also be uninstalled.
Follow the above steps, then update the CCO again.

2.7 INI Files

The INSTALL.INI file contains information copied to the directory that is specified by the installation program. Also, SETUP.INI is a file referred by SETUP.EXE. Make sure these file are always in the same directory as the SETUP.EXE file. Please do not edit these files. If modified, the operation is not guaranteed.

2.8 System Setup Files

There is no need for the user to edit any system files (AUTOEXEC.BAT, CONFIG.SYS, SYSTEM.INI).

2.9 Installation Using the Registry File

The registry file is used when a user wants to restore an environment created on one PC to another PC. When the various settings are made with the SetupPOS utility, this information is retained in the registry. With the SetupPOS utility, only the information necessary for the registry is stored in a file. By specifying this file with the Installer, it is possible to restore the same environment.

To use this function, follow the procedure described below.

In this section, the originally created environment is called the "main PC", and the environment that you want to reconstruct is called "target PC".

<Procedure>

- (1) Install the EPSON OPOS ADK in the main PC, and set the necessary

information and the various devices using the SetupPOS utility.

Use the SetupPOS utility to save the registry. At this point, pay attention to the following and create the files.

- Specify "Register All".
- (2) Perform installation on the target PC.

At this point, the following two methods are available. Select the method that suits the environment.

- Installation using the normal installation method.
- Installation using the Silent Installation method.

For the normal installation method, take the procedures described in "[2.3 Installation](#)". For installation using the Silent Installation method, see Section 3. "[2.11. Silent Installation](#)".

When installing on the target PC, specify the registry file saved in procedure (1).

<Restrictions>

- The Registry File must be created using the SetupPOS utility.
- It is a prerequisite that the Registry File contains the same version information as the version to be installed, or the same information as the installed environment.
- When a registry file is specified using the installer User Interface, install components are not determined automatically. Desired components should be selected using the installer User Interface.
- With the installation using the Registry File, the old version's information is not succeeded.

2.10 Add-in Functions (Service Pack)

The add-in function is a function installing the package containing update requirement only. A service pack is created based on the version exist. (This existed version is called the base version, in this section.) A service pack may be made available when devices are added or some kind of update becomes necessary after the release of the base version. For the latest service pack, please consult the manufacturer.

When you install the service pack, the registry information before the service pack has been installed is saved as a file in the destination folder for installation (file name: "OposReg.reg"). Use this registry file for Silent Installation of the base version to the target PC.

This function is also used when you overwrite an old version (Version 2.xx) of EPSON OPOS ADK with a new version. In this case, the installed devices or the

files only are all updated.

<Procedure>

- (1) Run the SETUP.EXE file on the service pack disk.
If Setup is executed with other programs' running, its operation is not guaranteed. It is suggested to close all programs before executing Setup.
Startup of the Setup program may take some time.
- (2) Displayed message before the installation.
Before the installation, a message about the installed devices or files appears.
For service pack:
If a device included in the service pack is not installed, a warning message appears. This is because devices cannot be added after installing the service pack. (Refer to <Restrictions> below for details.)
To overwrite Version 2.xx with a new version:
If the devices and files included in the new version are not installed, a prompt message appears. All devices or files not listed in the message will be overwritten. To install other files, run the installation again after the update.
Select [Next] to continue. Select [Cancel] to cancel the installation.
- (3) The "Welcome" dialog box is displayed.
Read the contents and then select the [Next] button if you agree with the contents.
- (4) The "Software License Agreement" dialog box is displayed.
To install the EPSON OPOS ADK, you must agree to the contents of the displayed agreement. Read the contents and select "I accept the terms in the License" if agreed with the Software License Agreement. After the selection, the [Next] button becomes effective. Then, select the [Next] button. If the Software License Agreement is not acceptable, select "I do not accept the terms in the License Agreement". Then, select the [Cancel] button. Select the [Back] button to return to the previous dialog box.
- (5) The "Information List" dialog box is displayed.
Information of the installed EPSON OPOS ADK is displayed. Confirm the contents, and then select the [Next] button if the contents are acceptable.

- (6) The "Select Registry File" dialog box is displayed.
Select "Not Use Registry File" when the REG file is not used. Then select the [Next] button. Select "Use Registry File" to use the REG file. Enter the full path REG file name after the text box is enabled. The default value is "A:\OPOSDATA.reg". Then, select the [Next] button. Press the [Browse] button to specify the folder name that includes the REG file.
The REG file is a file for restoring information related to EPSON OPOS ADK. Use the SetupPOS utility to create this file.
If an improper Registry File is selected, an error message will be displayed and it will not be possible to go to the next dialog box. Follow the directions of the error message and confirm that the Registry File is correct. When the Registry File is set correctly, subsequent information can be referred from the Registry File. When installing by overwriting, the Registry File information will have priority over the installation information of the previous installation.
Select the [Back] button to return to the previous dialog box.
- (7) The "Select Installation Module" dialog box is displayed.
Select a module to be installed. Selectable modules are "Program Files", "Samples", and "Manuals".
Installed modules cannot be selected.
After selecting a module, press the [Next] button. Press the [Back] button to go back to the previous dialog box.
- (8) The "Start Copying Files " dialog box is displayed.
The dialog box shows the information, which has already been set.
Confirm the contents and select the [Next] button.
Select the [Back] button to return to the previous dialog box.
- (9) Copying of files, registration of DLL and OCX, and setting the registry begins.
The [Cancel] button works at this point, but do not press the [Cancel] button unless there is a particular reason. Operation after pressing the [Cancel] button is not guaranteed. If pressed, be sure to perform a reinstallation.
At this point, all the information necessary for the version upgrade shall be updated.
It may take a few minutes for all the operations to be completed.

- (10) When all the operations are completed, the “Setup Complete” dialog box is displayed. Select in the check box whether or not to display the release note on the installed EPSON OPOS ADK. It is strongly recommended to read the notes.

When the installation of the parallel driver is successfully done, system files are renewed and a message to query rebooting method is indicated. Please specify whether rebooting right away or later, and execute the rebooting. If later rebooting is specified, make sure to reboot after the completion of the installation. The operation under the un-rebooted environment is not guaranteed at all.

- (11) Installation is completed. The SetupPOS utility starts up. Confirm the settings in accordance with the setup described in “Section 5. SetupPOS Utility” of “EPSON OPOS ADK MANUAL User’s Manual (Installer/ SetupPOS/ TMUSB)”.

When system rebooting is executed, SetupPOS utility does not start automatically. Please start SetupPOS utility from start menu.

<Restrictions>

- Be sure to install the base version before installing the service pack.
- As long as the service pack version number is higher than already installed service packs it can be installed without installing intermediate service packs. For instance, it is possible to add-in Service Pack Version 3 directly to the base version. It is not necessary to first add-in Service Pack Version 1 or 2.
- It is not possible to install a service pack older version than the one currently installed.
For instances; after Service Pack Version 3 has been installed, it is not possible to install Service Pack Version 1 or 2.
- The base version cannot be overwritten after installing the service pack. Also, the service pack alone cannot be uninstalled. In other words, after the service pack is installed, later installations of additional devices are not possible. Be sure to reinstall or overwrite the base version and the desired devices before installing the service pack.

2.11 Silent Installation

Installation can be performed without using the user interface. This is called "Silent Installation". This function uses the Registry File explained in the previous section. For details, please refer to the "[2.9 Installation Using the Registry File](#)" of this manual. This function is mainly used for installation on the target PC. Please use another installation function using normal user interface on the main PC. For description of target PC and main PC, please refer to the "[2.9 Installation Using the Registry File](#)" of this manual. When executing a Silent Installation, the registry information from the main PC is succeeded. OPOS ADK Manuals and the Sample Programs cannot be installed when using the Silent Installation function. To use this function, take the following procedures.

<Procedure>

Install the EPSON OPOS ADK on the main PC, and set the necessary information and the various devices using the SetupPOS utility. Then, save the registry using the SetupPOS utility.

- (1) Make a recording file.

Make a file for recording the operation of install. To install EPSON OPOS ADK, perform the following commands.

(Example) "Full Path\Setup.exe" /r

When the installation finished, the install operation is recorded to the "Setup.iss" file that is made in the Windows folder.

- (2) Use the "Export Registry" in SetupPOS utility to save the registry information. Select the [All] button

- (3) Using the (1) recording file and the (2) recording file for Silent Install.

Copy the (1) recording file to the same folder as the "Setup.exe".

(Example)

"Full Path\Setup.exe" /s /a"a:\OposData.reg"

To specify the path of the recording file, use the "/f1" option.

(Example)

"Full Path\Setup.exe" /s

/f1"c:\Temp\setup.iss"/a"a:\OposData.reg"

The functions are added to Silent Installation by adding the following parameters to command lines.

The following parameters can be used at the same time. If you wish to use them at once, input the parameter you want to use after the parameter added to the command line.

Parameters do not distinguish capital and small letters. It is not necessary specifying only with small letters as the following examples show.

<Making a recording file>

Adding Parameter: " /r"

Example: "Full Path\Setup.exe" /r

<Indicating the Silent Installation>

Adding Parameter: " /s"

Example: "Full Path\Setup.exe" /s /a"Full Path\OposData.reg"

<Specify the substitute recording file name and the path name>

Adding Parameter: " /f1"

Example: "Full Path\Setup.exe" /s /f1"C:\Temp\Setup.iss" /a"Full Path\OposData.reg"

<Specify the substitute log file name and the path name>

Adding Parameter: " /f2"

Example: "Full Path\Setup.exe" /s /f2"C:\Temp\Setup.iss" /a"Full Path\OposData.reg"

<Indicating that adds the registry >

Adding Parameter: " /a"

Example: "Full Path\Setup.exe" /s /a"Full Path\OposData.reg"

<Rebooting after the Silent Installation>

Adding Parameter: " /n"

Example: "Full Path\Setup.exe" /s /a"Full Path\OposData.reg" /n

- The result is stored in the log file.

The log file is created with the name "Silence.log" in the target directory. All errors can be referred here. However, before the completion of the installation, the file is created in the root where Windows is (e.g. "C:\") since the target directory is not decided until the completion of the installation. Please ensure no errors exist in the log file after the Silent Installation.

<How to view Silence.log>

[SilenceMode Log]

Silence Mode Start : Silence mode starts

[SilenceMode Log End] : Silence mode ends

ERROR : Error message

WARNING : Warning message

INFORMATION : Information

MESSAGE : Message

Messages are logged in the same way as the messages listed in Section 3. "2.12. Messages for Installation" of this manual.

Once the Silence.log file is created, results are added to this file. For the latest result, please see the line, which indicates the start of the latest Silent Installation.

<Restrictions>

- The registry file is necessary for the Silent Installation.
- The registry file saved by the base version can be used only for the Silent Installation of the base version. It cannot be used to install the service pack.
- When installing a service pack with Silent Installation function, registry files have to be made under the condition that the service pack is being installed in advance. When the environment in which the service pack has been installed is imported to the target PC with the Silent Installation, first, execute the Silent Installation with the base version and the registry file for the base version (created automatically in the destination folder for installation during the service pack installation), then execute the Silent Installation with the service pack and the registry file for the service pack.

EX: Procedures for service pack Silent Installation

1. First Silent Installation of the OPOS Version 2.xx by using the following

Example:

```
"Full Path\Setup.exe" /s /a"Full Path\OposReg.reg"
```

2. Next, Silent Installation of the service pack by using the following

Example:

```
"Full Path\Setup.exe" /s /a"Full Path\OposData.reg"
```

Notes: The registry files such as "OposReg.reg" or "OposData.reg" are the example, which are already saved.

- When the environment (Main PC) for creating the registry files to be used is installing EPSON TM USB Driver or parallel driver with this installer, the driver being installed is installed with Silent Installation regardless of parameter's presence. If you wish not to install those drivers to the target PC, please make a registry file with a PC that is not installing respective driver.
- When a parallel driver is installed with Silent Installation, the system rebooting is not executed upon success of installation. For installing the parallel driver with Silent Installation, adding reboot parameter or rebooting after installation is required.

2.12 Messages for Installation

The program shows a user message when necessary after the execution or setting of an item selected in a dialog box. Follow the instructions in them. Conditions in which messages appear and the messages themselves are listed below.

2.12.1 Messages at the Time of Startup

Condition	Error Message
A user without administrator authority is attempting to perform installation. (Windows 2000/ Windows XP/ Windows Vista)	The user does not have Administrator authority.
The "Install.ini" file is not found.	There is no "Install.ini" file in the current directory. This installation is closing.
The "Relnote.txt" file is not found.	There is no "Relnote.txt" file in the current directory. This installation is closing.
The contents of the "Install.ini" file are illegal and the contents are changed.	The setting files for installation are not found or the contents have been changed.
The registry information is corrupted.	Registry information couldn't be read.
Attempting to install a previous version over a new version.	Newer OPOS has been already installed.
Attempting to install a special version by overwriting but the special version does not allow overwriting installation.	This version can't be installed in.
Attempting to install a special version by coexistence but the special version does not allow coexisting installation.	This version can't be installed in.
Attempting to install a version that allows overwriting in the condition where a special version that does not allow overwriting installation is already installed.	It can't be installed. It won't replace the OPOS of this version.
Attempting to install a version that allows coexistence in the condition where a special version that does not allow coexisting installation is already installed.	It can't be installed. It won't replace the OPOS of this version.
Attempting to install by overwriting/coexistence when the version allows neither overwriting nor coexisting installation.	The OPOS in the registry files can't replace the current version, and they can't coexist either.
A version in different language is already installed.	The language of OPOS of this installation is different from the language of OPOS being installed. It can't be installed.

The Comctl32.DLL system file is outdated, corrupted, or does not exist.	For EPSON OPOS ADK to run properly, the update of Comctl32.DLL is required. The latest DLL update can be found and downloaded from the Microsoft web site. (Or can be found with the provided disk with OPOS.) Installer can be resumed following running the DLL update, 50Comupd.exe.
---	--

2.12.2 Messages during Installation

Condition	Error Message
There is not enough free space in the directory in which EPSON OPOS ADK to be installed.	The necessary free capacity can't be secured to install OPOS.
Another application is using a file to be installed with EPSON OPOS ADK.	A required file may be in use. Close all applications, and install again from the beginning.
Not a single component has been checked for custom installation.	A component isn't being checked.
The registry information contains illegal data.	An illegal result has been returned on the registry information.
When there was a failure to load an installer internal DLL.	The specified file cannot be found. Please prepare a valid disk and restart installation.
When the selected CO type is different from the installed CO type.	The selected control objects type is not compatible with the one already installed. If you continue and install with this control objects type, the existing objects will be automatically removed and invalidated.
The registry recordation of uninstall information is failed.	Failed to record uninstall information. The uninstaller may not work correctly.
When the information for registered devices that is not supported by the current version is contained in the specified registry file.	Information for registered devices that is not supported by the current version is contained in the specified registry file. Since the use of this file as it is could lead to unexpected results, it is necessary to delete this device information. Do you wish to delete this device information? Click "Yes" to continue the install and delete this device information.

2.12.3 Message during Driver Installation after EPSON OPOS ADK Installation

Condition	Error Message
There is no driver supporting the OS currently used.	The OS currently used is not supported.
The Installation transaction of the parallel driver is failed.	Failed to the installation transaction of the Parallel driver.
An error is returned during the installation of the parallel driver.	The Installer of the Parallel driver returned an error.
An unexpected error is returned during the installation of the parallel driver.	An unexpected error is detected.
The update transaction of the parallel driver is success.	To use the Parallel interface, the PC must be restarted. To restart now, remove the disk and click "Yes". To restart later, click "No".

2.12.4 Messages When the Silent Mode is specified

Condition	Error Message
An illegal value is specified for the Silent Installation command line.	The form of the command line parameter is illegal. Define it as follows. setup /a"RegData.reg"
An inexistent registry file is specified in the command line.	Registry File specified in the command line parameter cannot be found.
The Silent mode's log file cannot be created.	Failed to make the silence log files.
The Silent Installer log file cannot be opened.	Failed to open the Silent Installer log file.
A unsupported registry file is specified in the parameter.	Registry file specified in the command line is illegal.

2.12.5 Messages Related to Registry File

Condition	Error Message
The registry file, which is not being installed, is specified for registry import or the parameter specification at starting up.	The version recorded by registry file doesn't correspond to the version of this installation.
The coexistence registry file of a version that is not installed is specified at the time of coexistence installation	The version of the coexistence in the registry file and the version that is now being installed are different.
A registry file that contains coexistence information is specified at the time of sole installation	The coexistence version in the registry file hasn't been installed in the target computer.
A registry file created with a different language version is specified at the time the parameter is specified during registry file selection or startup	The language of OPOS recorded by registry file doesn't correspond to the language of this installation.
A registry file created with a version that is not supported is specified.	The specified registry file contains information on the unsupported version by this installation. This file cannot be used.
An internal processing of the registry file isn't performed smoothly due to some reasons.	Failed to make copies of the specified registry file. The selection of registry file is invalid.
A registry file that was made by different version OS is specified when registry file import or the parameter is specified at startup.	The language of OPOS recorded by registry file doesn't correspond to the language of this installation.

2.12.6 Messages during Coexisting Installation

Condition	Error Message
Coexisting with a current version, a registry file containing only information on Version 2.xx is specified when registry file is selected or the parameter is specified at startup.	This registry file has information only on this version. When coexistence is installed, it can't be used.
Coexisting installation with a version that does not support coexistence is executed.	A version of OPOS that cannot work with this version has been already installed. After uninstalling the currently installed OPOS, please install the new version.
Overwriting Ver1.9x by Ver2.xx.	Do you want to update the shared OPOS information?

2.12.7 Add-in Installation Messages

Condition	Error Message
Installation of an add-in service pack whose language is different from that of the base version is executed.	The language of OPOS of this installation is different from the language of OPOS being installed. It can't be installed.
Installation of an add-in service pack over a wrong base version is executed.	The installed version is not supported.
Installing the base version in the condition where the add-in service pack has been installed.	The service pack has been already installed in the OPOS.
Installing a service pack alone without its base version is being installed.	The OPOS base version for this service pack has not been installed.
Devices and files included in the add-in service pack have not been installed in the base version.	<p>The following devices and files cannot be installed after the installation of service pack x.</p> <p>----</p> <p>----</p> <p>It is recommended to have them installed before installing service pack x in case they are needed in the future.</p> <p>Proceed with installation?</p>
The devices and files included in the full package are not installed yet	<p>The following devices and files included in Version 2.xx are not installed.</p> <p>----</p> <p>----</p> <p>Only installed files are updated.</p> <p>To install other files, run the installation again.</p> <p>Proceed with installation?</p>

2.13 Precautions for Installation

- Overwriting installation is not possible when an EPSON OPOS ADK of different version or language (US version, Japanese version) has already been installed.
- It is not possible to read registry information files stored in an EPSON OPOS ADK of different version (including the service pack) or language (US version, Japanese version).
- Be sure to install the devices stated in the REG file information that is specified in the registry file import (that is, the devices that had already been installed or registered when the Setup POS utility stores to the REG file). If these do not match, operation cannot be guaranteed.

REG file information : POSPrinter, LineDisplay, MSR

Installed device : MSR

If such a setting is made as shown above, a conflict is generated, as it is only the settings of the POSPrinter and LineDisplay that will become valid whereas the actual files do not exist.

- If the installation fails for some reason, or it is canceled during the execution, be sure to perform a reinstallation. In the condition where installation has failed or been canceled, the settings, etc. may not be completely removed even if uninstallation is performed. EPSON OPOS ADK may malfunction due to the failure of the first installation even after the reinstallation. It is recommended to uninstall EPSON OPS ADK and install it again.
- When using USB POSPrinter, MICR, LineDisplay, CheckScanner, CashDrawer and ElectronicJournal, install the Epson TM USB Driver (Epson USB controller for TM printer series) in advance. It is not possible to install the USB OPOS information unless the Epson TM USB driver is installed. Users of the EPSON TM USB Driver should refer to "Section 6. EPSON TM USB Driver" of "EPSON OPOS ADK MANUAL User's Manual (Installer/ SetupPOS/ TMUSB)".
- When Version 1.xx and Version 2.xx are installed coexisting, the operation of Version 2.xx will not be normal if the uninstaller of Version 1.xx is used. Be sure to uninstall Version 2.xx first, or use the uninstaller of Version 2.xx to uninstall Version 1.xx.
- If Version 2.xx is uninstalled under the coexisting environment of Version 1.xx and Version 2.xx, the subsequent behavior of Version 1 is not guaranteed. In such a case reinstall Version 1.xx and make the prescribed settings.
- You can install and uninstall CCO using the SetupPOS utility; subsequently,

however, the CCO registration information and the Installer cannot be synchronized.

When CCO is registered by the SetupPOS utility while CCO is not installed by the Installer, or when CCO is released by the SetupPOS utility while CCO is installed by the Installer, the Installer message may not be appropriate.

- When overwriting Version 1.xx by Version 2.xx, the settings of the trace function on Version 1.xx may not be succeeded. They are as follows.

CashDrawer: "Open Status Phase" (Device Specific Settings)

POSPrinter: "Reverse feed removal" (Device Specific Settings)

All devices: When the Trace file name is setting to default value by the OPOS API Trace Setting.

Set the trace function again before using it after the information was succeeded. When overwriting Version 1.xx by Version 2.xx in the above cases, please redefine the setting by the SetupPOS Utility after installing.

If both Version 1.xx and Version 2.xx exist at the same time and "Trace All" is selected for each version, only trace of either one of the versions can be taken.

- When the reboot setting after the Silent Installation is being specified, the system reboots automatically after the installation. The data being edited should be saved or terminated before the installation.
- When installation of parallel driver with this installer is succeeded, please make sure to reboot the system. The rebooting enables the use of recommended parallel driver.

Please note that if the system is not rebooted, the operation is not guaranteed at all.

- Upon completion of the installation, a Tmusb folder that stores the installer of EPSON TM USB Driver and a Lilac folder that stores the installer of recommended parallel driver are created at the target folder.

Even if these drivers are not installed with this installer, they can be installed by execution of their installers later on.

Section 3. Uninstallation

The provided Uninstaller must be used to uninstall an installed EPSON OPOS ADK program. The following methods are available for uninstallation.

- Choose the "Add/Remove Programs" (in Windows 2000/XP) or the "Uninstall a program" (in Windows Vista) in the Control Panel, and then select the "EPSON OPOS ADK Version 2.xx".

In both cases, the EPSON OPOS ADK uninstaller is executed.

When uninstalling, first make sure that all running applications are closed; both those used by OPOS as well as any other applications.

However, when using Windows 2000, Windows XP and Windows Vista, only privileged users can use install programs. Please consult a user who has privilege for the machine.

3.1 Uninstallation Procedures

Perform uninstallation using either of the methods prescribed.

- (1) The "Information..." dialog box is displayed.
This dialog box displays the version(s) compatible with the Uninstaller. Confirm that the version to uninstall using the Uninstaller is listed. To continue, select Yes. To cancel the operation here, select No.
- (2) The "ADK Selection" dialog box is displayed.
All the currently installed EPSON OPOS ADK versions are displayed. Select the version to uninstall. Multiple versions cannot be selected. If you check the Complete uninstall of selected OPOS ADK check box, full uninstallation is performed. If the check mark is removed, it is possible to select the device(s) to be removed. When the selection has been made, select the [Next] button. If checked, go to step (4).
To return to the previous dialog box, select the [Back] button.

- (3) The “Selection of Devices to Delete” dialog box appears.

The “Selectable devices” window shows the currently installed devices. Select a device to be deleted, and then press the [Remove] button. The device is moved to the “Devices to delete” window. To return to the “Selectable devices” window, press the [Add] button. Move devices from the “Selectable devices” window to “Devices to delete” the window. To move all the devices shown in the “Selectable devices” window to the “Devices to delete” window, press the [All] button. All the devices are moved. When the selection is done, select the [Next] button. To return to the previous dialog box, select the [Back] button.

- (4) The “Confirm Deletion” dialog box appears.

Information related to the Uninstallation is displayed. Confirm the contents. Uninstallation starts when the [Start] button is selected. To return to the previous dialog box without starting deleting, select the [Back] button if you do not want to start deleting.

- The Uninstallation process starts. A progress bar indicates the status of the Uninstallation.
- A message indicating completion is displayed on the progress bar when the Uninstallation is completed.

3.2 Types of Uninstallation

There are two types of Uninstallation: full and custom. The types of the Uninstallation can be selected by “Completely remove the selected ADK configuration” check box in the “Select ADK Version” dialog box.

- Full uninstall

Deletes all the devices registered in the selected version.

- Custom uninstall

Select the devices to be uninstalled from all the devices registered in the selected the devices using the “Selection of Devices to Delete” dialog box. The device can be specified by device classes.

3.3 Silent Uninstallation

It is possible to perform uninstallation without using the user interface. This is called Silent Uninstallation. When Silent Uninstallation is used, only full uninstallation is performed. Specify in the command line as follows:

The way to specify depends on the installing version.

- Silent Uninstallation of Version 1.xx
Example: "FullPath\Uninstaller.exe" /s"Version"
- Silent Uninstallation of from Version 2.00 to 2.50 (including service pack version)
Example: "FullPath\Uninstaller.exe" /s

When only /s is specified as the parameter, the currently installed program is uninstalled. This parameter can only be used when only one version is currently installed. If multiple versions are installed, an error message is displayed. When multiple versions are installed, specify as follows.

- Silent Uninstallation of Version 2.60
 <Procedure>
 (1) Make a recording file.
 Make a file for recording the operation of uninstall. To uninstall the EPSON OPOS ADK, perform the following commands.
 (Example) "Full Path\Setup.exe" /r
 When the uninstallation finished, the uninstall operation is recorded to the "Setup.iss" file that is made in the Windows folder.
 (2) Using the (1) recording file file for Silent Uninstall. Copy the (1) recording file to the same folder as the "Setup.exe".
 (Example) "Full Path\Setup.exe" /s
 To specify the path of the recording file, use the "/f1" option.
 (Example) "Full Path\Setup.exe" /s /f1"c:\Temp\Setup.iss"

The functions are added to Silent Installation by adding the following parameters to command lines.

The following parameters can be used at the same time. If you wish to use them at once, input the parameter you want to use after the parameter added to the command line.

Parameters do not distinguish capital and small letters. It is not necessary specifying only with small letters as the following examples show.

<Indicating the Silent Uninstallation>

Adding Parameter: /s

Example: "FullPath\Uninstaller.exe" /s

<When the Silent Uninstallation finished, not to display the dialog box>

Adding Parameter: /m

Example: "FullPath\Uninstaller.exe" /s /z"/m"

To specify the "/m" option, use the "/z" option.

<Not to delete the file that is made and used by ElectronicJournal>

Adding Parameter: /e

Example: "FullPath\Uninstaller.exe" /s /z"/e"

To specify the "/e" option, use the "/z" option.

<When the Silent Uninstallation finished, not to display the dialog box, and not to delete the file that is made and used by ElectronicJournal>

Adding Parameter: /m, /e

Example: "FullPath\Uninstaller.exe" /s /z"/m /e"

To specify the "/m" option and the "/e" option, use the "/z" option.

3.4 Messages for Uninstallation

The Uninstaller program shows user messages when necessary after the execution of dialog boxes or making of settings. Follow the instructions in them. Conditions in which messages appear and the messages themselves are listed below.

Condition	Error Message
A user who does not have Administrator authority is attempting to perform Uninstallation.	Administrator Access Required. Execute this program from an account with administrative access.
The Uninstaller is started while OPOS is not installed.	OPOS is not installed.
The Uninstaller of a version in a different language was executed.	The target language of OPOS is not installed.
The Uninstaller does not have the required information.	Internal Error Occurred. Premature program termination required. Some component may not have been deleted. Please manually delete remaining components.
The registry contains illegal information.	Unable to open registry. Program terminating.
The required information was not found in the registry.	Unable to get required information from registry. Program terminating.
Other files have been copied to the install directory.	Unable to remove directory. Remove directory manually.
An illegal value has been entered on the command line.	Invalid Parameter. Required format is: Uninstaller /s"X.xx"
The version that is not installed is specified as the command line parameter.	Version not installed or invalid command parameter.
The file to be uninstalled is being used by another application.	Xxx is being used by other application. To delete this file, exit the application using the file and push the [Retry] button. To leave this file, push the [Cancel] button.
Only the /S parameter is specified on the command line when multiple versions of OPOS are installed.	There is more than one installed version of OPOS. Use the command line option Uninstaller /s"X.xx" to uninstall a specific version or execute the user interface version.

3.5 Precautions for Uninstallation

- Uninstallation is not possible when an EPSON OPOS ADK of different version or language (US version, Japanese version) is installed.
- The Uninstallation is executed on the condition that OPOS-related files are not in use. If OPOS-related files are in use, a message that files cannot be deleted is displayed. When this message is displayed, close the application that is using the OPOS-related files. Then try again to continue the Uninstallation process. If the Uninstallation is not retried, files alone will remain in the directory.
- Close Explorer for executing Uninstaller.
- This Uninstaller does not uninstall the EPSON TM USB Driver and the recommended parallel driver that are provided by the installer. However, the system operation is not affected by those drivers.
- If the parameter "/m" is specified for the Silent Installer, it operates in Silent mode. For this reason, after the Silent Uninstaller is finished, do not execute the installer.